

TRADLINX
shipgo

_____ SMART LOGISTICS VISIBILITY SOLUTION



1. Background
2. ShipGo Value Proposition
3. ShipGo Functions
4. Case Studies

TRADLINX

World's Best Real-Time Tracking Solution for All International Logistics

ShipGo utilizes Big DATA, collected and analyzed to pin-point your international shipment, to give **FULL VISIBILITY** for all your tracking needs

Current Shipment

Current Status & Schedule

Automatic Report

Delay Monitoring



TradLinx ShipGo leads smart / digital logistics environment

Satellite AIS data based solution lets you gain control over shipments and your tracking can be systemized as never before with Process Automation + Real-Time Data

1 Shipments on the Move - Visibility

Satellite AIS data & other millions of data monitor your shipments in real-time. Delayed or altered shipments can be identified without phone calls. With full visibility, preemptive actions to address relevant issues can be easier than ever

2 Logistics DATA - RPA

Control logistics performance through real-time / historic data

Manage your logistics by country / area / buyer / seller

3 Efficient Management - SYSTEM

Tracking Report is only a click away, automatically generated and ready to print.

SaaS or On-premise to provide the best logistics management tool in the market

ShipGo

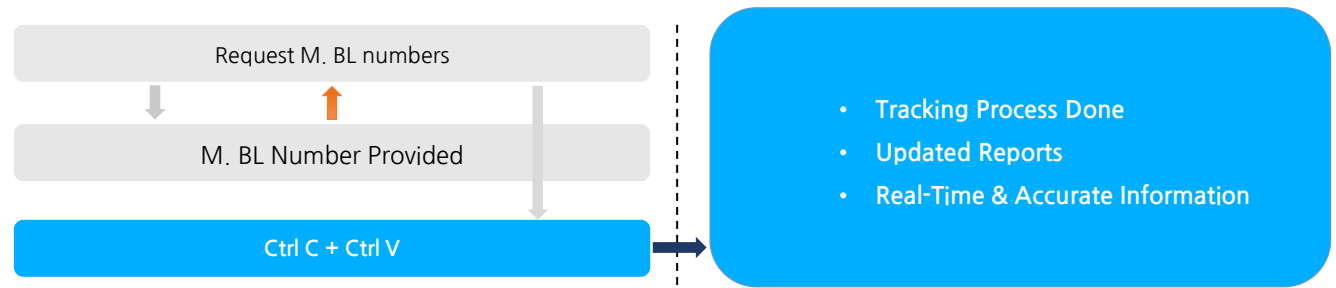
Value Proposition

Strategic evaluation/application is possible with digitally managed tracking service

Visibility allows management to act preemptively prior to occurrence of any issue from day to day operation

Systemized tracking eliminates human errors and promotes accuracy and efficiency

Tracking Process



Tracking Structure / Process

Tracking Process	Simply Ctrl C + Ctrl V / Digital tracking begins
Resources	No resources needed
Report Cycle	Real-Time
Report Coverage	Unlimited Volume / Pay as you go
Shipment Type	Ocean Port to Port / Door to Door / Imports / Exports
Region	Global
Ocean Carrier Coverage	35 Global & Local ocean carriers / over 95% global coverage

ShipGo Value Proposition

Independent	No third Party Input needed
Accurate	Satellite AIS data + Ocean Carrier Data to guarantee accurate information
Real-Time	Status & other information change reflected in real-time
Full Visibility	Full visibility with Google Map
Preemptive Actions	Preemptive actions can be taken for delayed shipments
Functionality	Access your account anywhere / anytime through SaaS based model

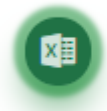
ShipGo

Easy Use - Input

Input your data without errors and in one step process.

One step process: **Ctrl C + Ctrl V**

Tracking Done



Input Shipment Information

선적 엑셀 등록				B/L (선사 4코드 포함)
P/O	고객사	담당자	선사	
TX20201Q11	**산업	이준원	[HMM] Hyundai / 현대상선	TXMUHBASD12345
TX20201Q12	**해운합동	정동일	[YML] Yang ming	TXYMAD68039992
TX20201Q13	**인터내셔널	유병재	[HMM] Hyundai / 현대상선	HHUMKO098A773618
TX20201Q14	**상사	이준원	[HMM] Hyundai / 현대상선	OMOMHBWB8137047
TX20201Q15	**로지스틱스	정동일	[ONE] ONE	OJHMDK998309280
TX20201Q16	**물산	유병재	[MSC] MSC	MMEDIUK76382
TX20201Q17	**세연에어	이준원	[HMM] Hyundai / 현대상선	TXTWUBUWB8490291
TX20201Q18	**테크	정동일	[CMA] CMA CGM	SSUBKDTX009983
TX20201Q19	**산업	유병재	[MSC] MSC	TEDMU7764394
TX20201Q20	**해운합동	이준원	[CMA] CMA CGM	XUEIK99830
TX20201Q21	**인터내셔널	정동일	[ONE] ONE	XKMDITXU37994820
TX20201Q22	**상사	유병재	[KMD] KMTCC / 고려해운	KMTXCGN736728
TX20201Q23	**로지스틱스	이준원	[NSS] Namsung / 남성해운	ADDJFHCC33049281
TX20201Q24	**물산	정동일	[HAS] Heung-A / 흥아해운	HHDJFL2059993819

Click on 'Input Shipment Information' and copy & paste Master BL number

운행상태	상태	선박명	MMSI	IMO	Call Sign	출발항	ETD/ATD	도착항	ETA/ATA	상태
ON	계류중	MSC_ZOE	352757000	9703318	3FOA	[KRBNP]New Busan	2020-06-23 00:27	[KRPU]Busan	2020-06-26 20:00	
OFF	항해중	AL_NASRIYAH	538005842	9708849	V7HL7	[AEJEA]Jebel Ali (Dubai)	2020-06-25 22:39	[SOSIN]Singapore	2020-07-05 09:00	
ON	항해중	MSC_NEW_YORK	352952000	9606314	HOPF	[TRAMB]Ambarli Port	2020-06-25 10:15	[TRTEK]Tekirdag	2020-06-26 00:00	
ON	정박중	BEVERENCE	311272000	9250933	C6B9	[KRINC]Incheon	2020-06-24 05:58	[CNQIN]Qingdao	2020-06-25 14:37	
OFF	정박중	SUNNY CALLA	477193400	9698381	VRNX4	[CNSGH]Shanghai	2020-06-24 13:55	[KRINC]Incheon	2020-06-25 23:47	
ON	항해중	YM_UPWARD	636013691	9337468	A80R6	[CNYTN]Yantian	2020-06-18 15:30	[USLAX]Los Angeles, CA	2020-07-02 04:00	
OFF	항해중	CALIFORNIA TRADER	248136000	9771664	9HA4528	[HKHKG]Hong Kong	2020-06-25 03:50	[MYTPP]Tanjung Pelepas	2020-06-26 17:00	
ON	정박중	CSCL_YOKOHAMA	477189200	9383546	VRDF7	[KRTSN]Daesan/Seosan	2020-06-26 03:58	[KRTSN]Daesan/Seosan	2020-06-26 04:16	

ShipGo is now tracking your shipments in real-time

ShipGo
Automatic Updates

Vessel Name, ETD, DTA, ATD, ATA, TS,
Lead Time, Delayed Shipments
information updated automatically

ShipGo provides **all tracking relevant information**
on **One Page & updated automatically** to boost your efficiency

The screenshot displays the ShipGo '선적관리' (Shipment Management) interface. It features a main table of shipments and a detailed 'T/S Details' section. The main table includes columns for P/O, 고객사, 담당자, IN/OUT, B/L, Container No., 선사명, DIR/TS, 선명, 출발항, ETD/ATD, 도착항, ETA/ATA, 상태, T/Time, 수, and 삭제. The T/S Details section provides a breakdown of transshipments with columns for 선명, 출발항, 계획 ETD, ETD/ATD, 도착항, 계획 ETA, ETA/ATA, 상태, and T/Time. The interface includes various filters and sorting options, as well as an export button in the top right corner.

1. Filter your report by Buyer/Seller/Sales Rep
2. Transshipments Details are now available with ShipGo
3. Revised ETAs / ETDs are updated automatically
4. Filter only the delayed shipments to check the time/day delayed
5. Export whole / partial report to excel spreadsheets

ShipGo Full Visibility on the Map

Check to see all the on-going shipments with your own eyes

ShipGo offers the **most accurate and visible option** in the market

Users around the globe can monitor all on-going shipments
and check all changes in real-time

The screenshot displays the ShipGo interface with several key features highlighted by numbered callouts:

- 1:** A red location pin on the map indicates the real-time location of the vessel CMA CGM PREGOLIA.
- 2:** A pop-up window shows the current status of the vessel, including its name (CMA CGM PREGOLIA), location (Saint Petersburg), and status (Anchored).
- 3:** A detailed shipment status window for CMA CGM PREGOLIA, listing port calls with arrival and departure times, and vessel details.
- 4:** A list of all on-going shipments, including vessel names, routes, and scheduled dates.
- 5:** A customs status window for the shipment, showing the current status (e.g., '수입(사용소비) 결재통보') and related information.

1. Satellite AIS data provides real-time location
2. Check current status (anchored/sail/moor)
3. Check port calls prior to shipments
4. Preemptive actions are possible based on real-time information
5. Customs status is available for all import shipments (Korea only)

ShipGo

Full Coverage - Door to Door (IoT Device)

ShipGo connected with IoT devices can track door to door shipment, covering 100% of all international logistics

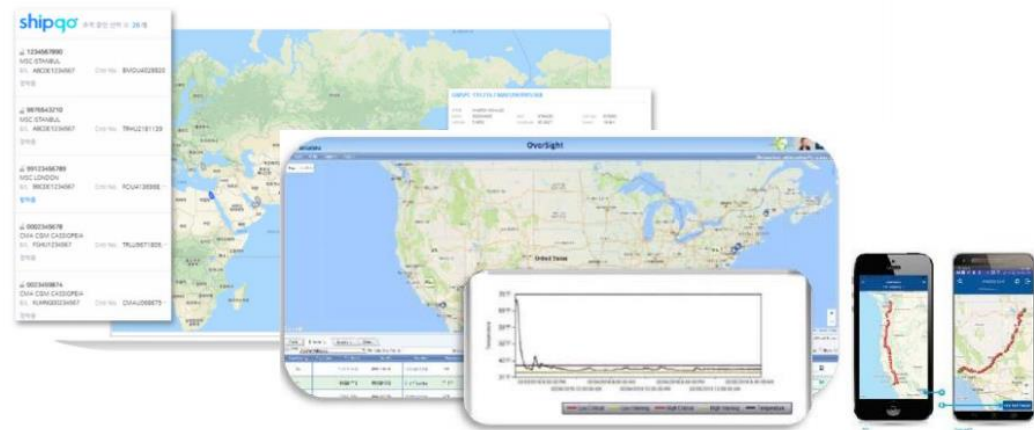
ShipGo connected with IoT devices can track **door to door shipment**

Inland, Barge, Rail tracking is no longer behind the curtain

Full Coverage tracking is now possible with ShipGo

ShipGo Plus

Coverage	Door to Door
Device Spec	Up to 50 days / 1 Time Use
Network	850/900/1800/1900 MHz Quadband / 2G & 3G Dual
Sensors	Location, Temperature, Humidity, Security(light sensor), Alarm
Process	Shipped to destined locations(warehouse) & attached to each container



CASE Study

THE E·LAND FASHION

Used ShipGo Since	July, 2019
Account Type	ShipGo - SaaS model
Most Used Regions	Imports - China, Vietnam, Myanmar, Indonesia
Ocean Carriers	HMM, KMT, ZIM, NAMSUNG, SINOKOR, etc.
Freight Forwarders	ANC, Pantos

Background

- Needs to upgrade their old logistics management system
- Add visibility for improved sales opportunities and existing customers
- Independent process/structure set up to increase efficiency and remove human errors

	Existing ERP	shipgo
Data Input	TRACKING Info Input by human	Automatic Tracking
Tracking Cycle	Daily or Weekly / @ Issues	Real-Time
Notification	No Alarm / Notified by freight forwarders	Alarms / Filter
Visibility	Text based only	Google Map
Accuracy	Human Error, Omit	Satellite AIS Data + Other Logistics Data
Actions	Delayed actions when issues arise	Preemptive Actions Possible

SCM Manager at THE ELAND FASHION quoted “ShipGo enabled us to manage and predict estimated arrival time with which we efficiently allocate & plan necessary distribution to our clients and direct stores. Our resource input has been reduced to minimal level with automatic system provided by TradLinx’s ShipGo.”

ShipGo Users

Now many multinational companies based in Korea are using ShipGo and their feedback is just phenomenal

ShipGo has become **A Must** for all shippers for its systematic management solution and visibility that it is now used by many multinational companies

Samsung, LG, Doosan, Daelim Corporation, THE E-LAND FASHION, THE E-LAND RETAIL, LS Nikko Copper, PNS Networks, Kodak Korea, SPC and many more...





서울특별시 강남구 학동로 134, 4층

www.tradlinx.com | 02-545-0522