

BUGUARD



# Company Profile

Featured In

Gartner.  
Peer Insights™

 TechCrunch

 Microsoft

Forbes

yahoo!  
finance

CNN®

# COMPANY BRIEF

Buguard is a globally positioned cybersecurity startup incorporated in Singapore with an operational office in Egypt and a regional office in Saudi Arabia. Buguard provides Offensive/Defensive Security & GRC Services and represents Dark Atlas, an AI-powered eXtended Cyber Intelligence Platform.

## OUR SERVICES:

- Offensive Security
- Defensive Security
- GRC as a Service
- Managed Security

## OUR SOLUTIONS:

- Dark Web Monitoring
- Cyber Threat Intelligence
- Attack Surface Management
- Digital Risk Protection

Backed by  
Egypt's Top VC





## VISION

Buguard aims to become recognized as a market leader in delivering the world's class cyber security services and solutions across the EMEA & MENA regions.

## MISSION

Buguard's mission is to empower our customers and partners to achieve and maintain information security through hiring the best Information Security professionals and providing high-quality professional Security services and security products.



# OUR OFFICES

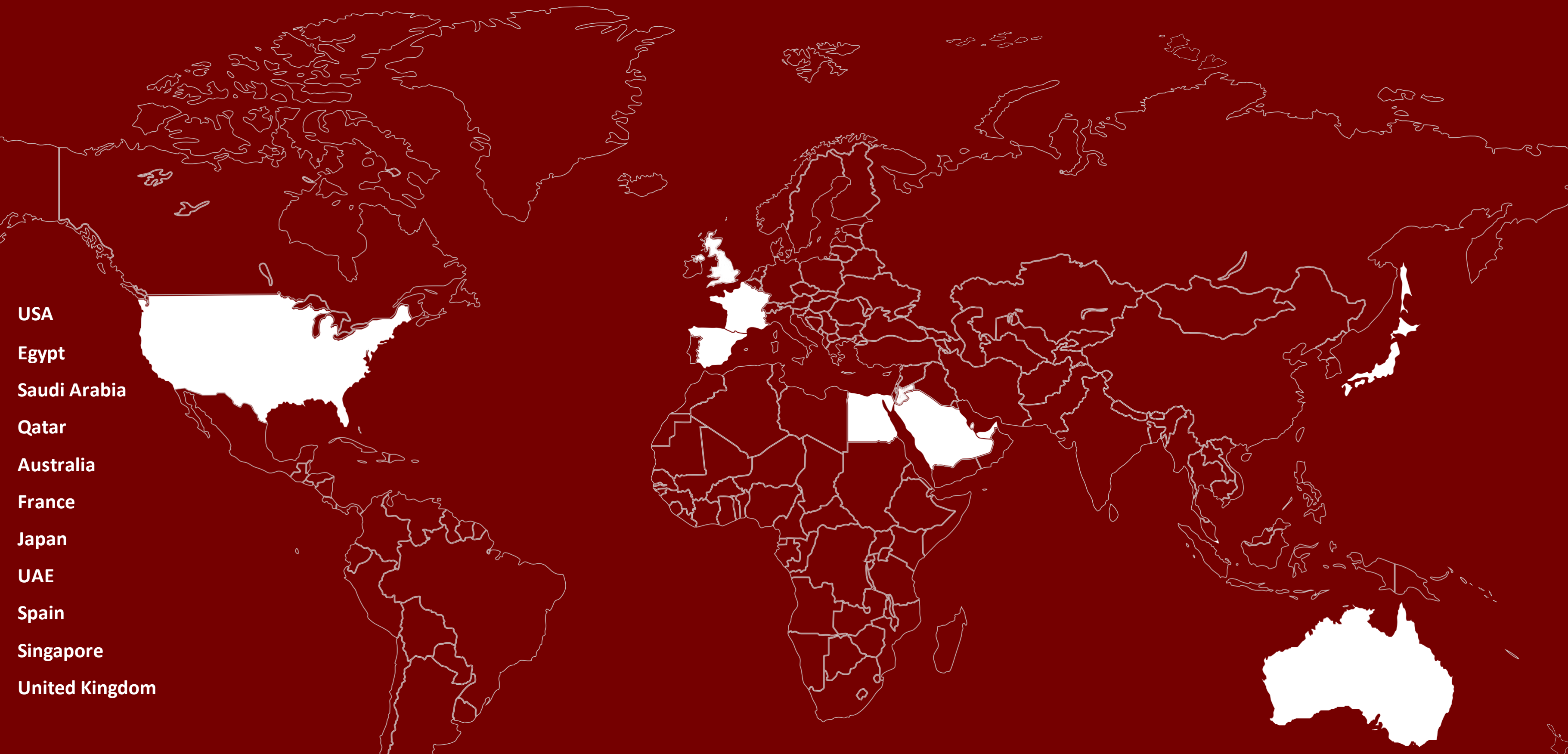


**USA**

**Saudi Arabia**

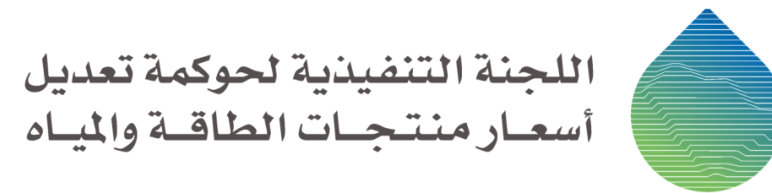
**Egypt**

# BUGUARD'S CLIENTS ON MAP



- USA
- Egypt
- Saudi Arabia
- Qatar
- Australia
- France
- Japan
- UAE
- Spain
- Singapore
- United Kingdom

# SAMPLE CUSTOMERS LIST (Saudi Arabia)



# SAMPLE CUSTOMERS LIST (EGYPT)



# SAMPLE CUSTOMERS LIST (EGYPT)





# SAMPLE CUSTOMERS LIST (GLOBAL)



# SAMPLE PARTNER LIST



# BUGUARD BUSINESS LINES

Offensive Security

---

Defensive Security

---

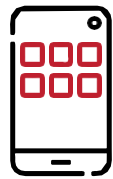
GRC as a Service

---

# Offensive Security



## BUGUARD OFFENSIVE SECURITY INCLUDE



### APPLICATION SECURITY SERVICES

- Web Application Penetration Testing.
- Mobile Application Penetration Testing.
- Desktop Application Penetration Testing.
- Application Architecture Review.
- Application Source Code Review.
- Application Threat Modelling.



### OFFENSIVE SECURITY SERVICES

- Red Team Operations.
- Phishing Simulations.
- SOC Maturity Assessments.
- Infrastructure Penetration Testing.
- VoIP Penetration Testing.
- Wireless Penetration Testing.



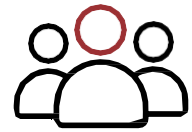
### SECURITY ASSESSMENT SERVICES

- Vulnerability Assessment.
- Cloud Security Assessment.
- IT Infrastructure Security Assessment.
- Network Architecture Review.
- Security Controls Configuration Review.
- Dark Web Leakage Assessment.

# Defensive Security

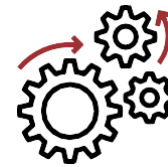


## BUGUARD DEFENSIVE SECURITY INCLUDE



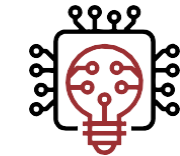
### PEOPLE

- Outsource SOC Engineers
- Defensive Security Training



### PROCESS

- DFIR & Ransomware/Breach Investigations
- Compromise Assessment & Threat Hunting



### TECHNOLOGY

- Fine Tuning for SIEM/SOAR
- Customized Use Cases for SIEM

# GRC as a Service



## BUGUARD GRC AS A SERVICE INCLUDE



### GOVERNANCE

- Gap Assessment (SAMA, NCA, CRF, PDPL, CBE, NESAs)
- Policies and Procedures Implementation
- Cyber Security Program Development



### RISK

- Risk Assessment
- Third Party Risk Assessment
- Asset Management Assessment



### COMPLIANCE

- SOC 2 Compliance
- ISO27K1 Compliance
- PCI-DSS Compliance

DARK  ATLAS



# DARK ATLAS

**An AI-Powered eXtended Cyber Intelligence Platform  
that combines four intelligence-driven solutions**



**Dark Web  
Monitoring**



**Digital Risk  
Protection**



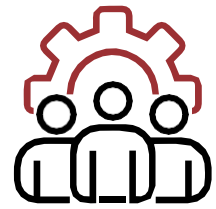
**Cyber Threat  
Intelligence**



**Attack Surface  
Management**



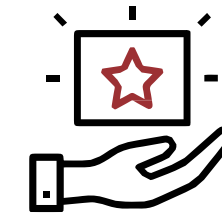
# ADDRESSING KEY CHALLENGES



## Staff

---

- Compromised Employees Credentials
- Enterprise Account Takeover
- C-Level Leaked PII Information



## Brand

---

- Look-A-Like Domain Names
  - Fake Brand Impersonations
  - Unauthorized Use of Trademarks
-

# ADDRESSING KEY CHALLENGES



## Infrastructure

---

- Supply Chain Security
- Exposed Vulnerable Servers
- Vulnerability Intelligence



## Customers

---

- Online Consumer Fraud
  - Phishing Websites Detection
  - Stolen Credit Cards Monitoring
-

A nighttime photograph of a city street with light trails from cars. In the background, a tall building with a distinctive curved top is visible. The scene is overlaid with a semi-transparent red filter and a decorative white floral pattern on the left side.

**< THANK YOU >**

**[Youssef@buguard.io](mailto:Youssef@buguard.io)**