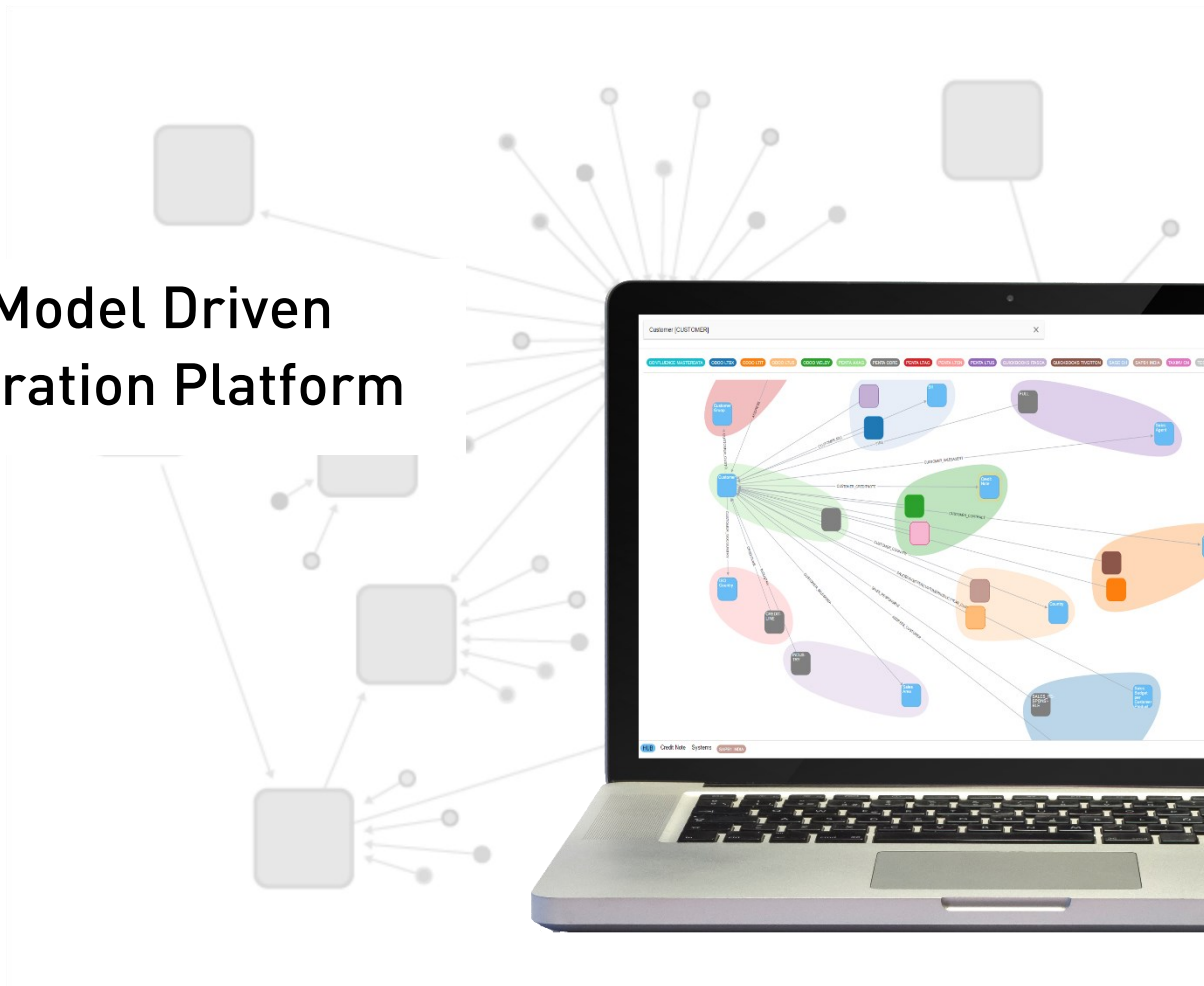


Datavault

BUILDER

Business Model Driven
Data Integration Platform



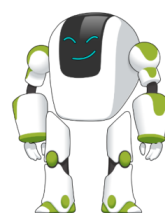


YOUR DATA INTEGRATION BOOSTER

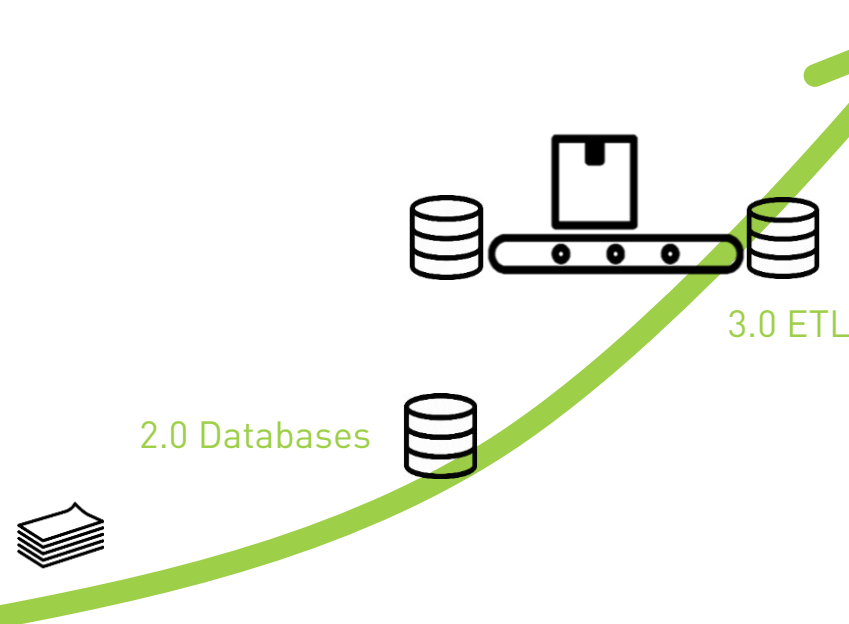
The Datavault Builder is a fourth-generation DWH automation software that delivers everything needed to set up, design, and run your data integration process in an agile way.

A visual map makes data accessible to a broad audience across the enterprise and shortens development time from months to days. Datavault Builder is superior to traditional ETL methods by:

1. Delivering a standardized, field-proven approach to streamline your development processes that saves time and ensures an increase in quality and maintainability.
2. Managing target objects and loading processes in real-time to reduce technological interfaces and synchronization needs. Feedback loops are accelerated, and your time-to-market shortens significantly.



Datavault BUILDER



Be part of the
evolution

01

Save time.

Thanks to automation, repetitive tasks are accelerated up to 90%. Combined with an agile development approach, results are available within hours.

02

Map data.

Integrating multiple files and systems quickly leads to complexity. To maintain an overview, we create a browsable data map with a complete data lineage.

03

Enable data-driven analytics.

With classical reporting, machine learning, AI or self-service BI, the first step is to prepare and provision an integrated data set. By leveraging Datavault Builder, you create the foundation to combine and deliver your data.

04

Make it maintainable.

Expand and scale your integration layer step-by-step for emerging use cases.

Our Mission



Standardize and automate to enable organizations to build **sustainable** data warehouse solutions for the long-term.



Add a **business perspective** to technical implementations for **facilitating collaboration** to always deliver what is needed.



Integrate all aspects required to run a **scalable** data warehouse in one tool that seamlessly connects into your existing IT landscape.

Remove the middleman

The Datavault Builder includes no separate metadata repository. Each change is deployed directly to the database and can be tested immediately to ensure the implementation remains synchronized with the logical model.



- Integrated scheduler
- Self-configuring jobs
- Load monitoring
- Open API architecture for integration into the existing IT landscape

- Updates for the data model
- Model deployment
- Sandboxing for developers
- Integration with enterprise version control (GIT, SVN)
- Knowledge in the system

- Works out-of-the-box
- Model- or source-driven
- Automated documentation
- Ensures an audit trail
- Data Vault core, dimensional output
- Data/Error-marts



Features

The Datavault Builder provides everything you need to develop and run a successful Data Integration Platform.

Our software replaces your data modeling tool, ETL/ELT engine, scheduler, and deployment software.

Use our open and well-documented APIs to integrate into your existing landscape.

Datavault Editor

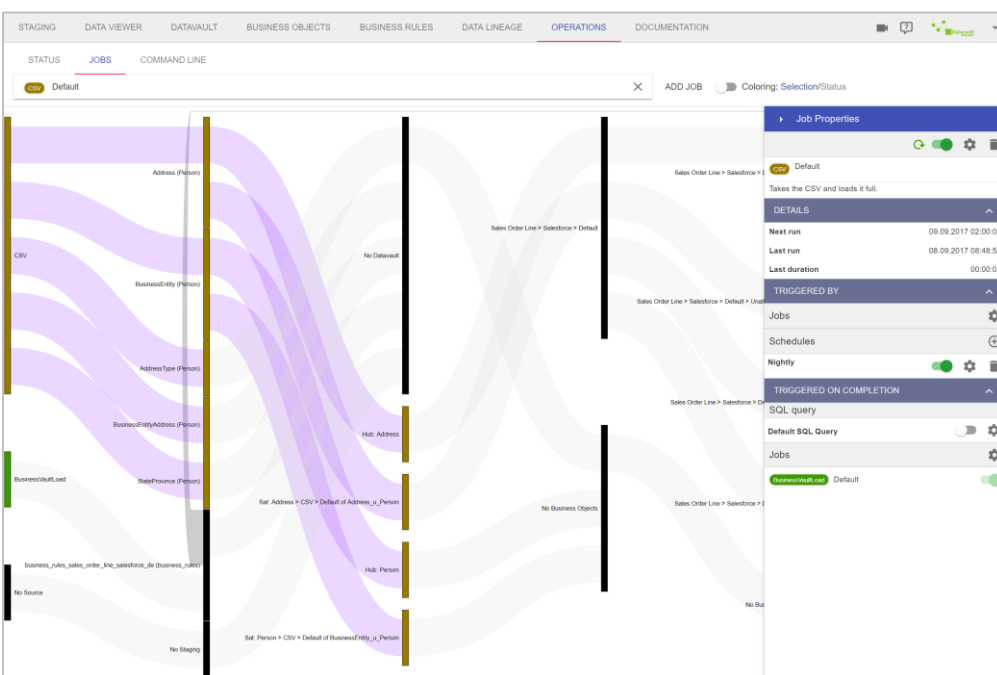
The heart of the Datavault Builder that displays the integrated objects, their relations, and attributes in the core warehouse. Selecting a 'hub' will present its metadata of multiple load definitions from different sources. These can be initiated and monitored directly from the editor.

Base	Hub Name	Hub ID	Alias For	Subject Area	Comment
	Sales Order	h_sales_order		Sales	Identifies the order. Business Key based on order number, which is printed onto confirmation sheet

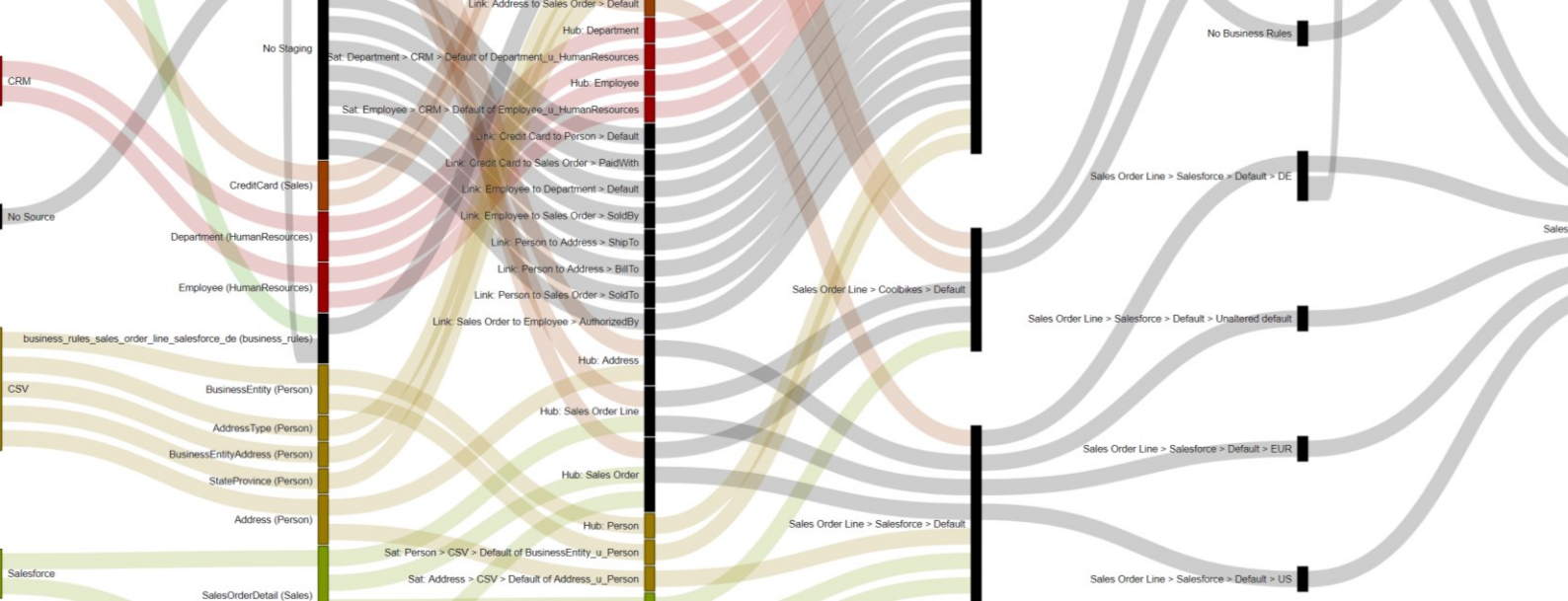
Load	Source System	Source Table	Business Key	Datavault Category	Keys are Unique	Actions
		staging.salesforce_r_SalesOrderHeader_u_Sales	SalesOrderID	Raw Vault	<input checked="" type="checkbox"/>	
		staging.salesforce_r_SalesOrderDetail_u_Sales	SalesOrderID	Raw Vault	<input type="checkbox"/>	
		staging.coolbikes_r_SalesOrderHeader_u_Sales	SalesOrderID	Raw Vault	<input checked="" type="checkbox"/>	

Overview

Data Warehouse Automation	Automatically start a new environment within minutes.	✓
	Automatically convert data models into working ETL code.	✓
	Automatically convert data models into operational jobs.	✓
	Built for Agile and DevOps: develop, retest, and deploy new features within an hour.	✓
	Extend jobs automatically as new elements are added to the data model.	✓
	Enable automated testing.	✓
	Self-generate documentation of actual solution.	✓
Extract, Transform, Load (ETL/ELT)	Built-in ETL/ELT engine.	✓
	Leverage the full power of the underlying database.	✓
	Automatic parallelization of workloads.	✓
	Allows for any data transformation, text parsing, and calculation based on common SQL (no new skills required).	✓
Version Control	Automatically generate slowly changing dimensions.	✓
	All changes are tracked and restorable.	✓
Metadata-Storage	Provides a complete protocol with timestamp and user information.	✓
	Direct storage of metadata in database objects.	✓
Install/Deployment	No need for a separate metadata repository.	✓
	On-premise.	✓
	Private cloud.	✓



Operations → Jobs
Visualizes the loads within one job as a data lineage flow, which are reconfigurable. Job dependencies and triggers (such as schedules) can be defined to automate the loading process.



MODULE-SPECIFIC FEATURES

Staging	Load from any JDBC source databases, including Amazon Aurora, Amazon RDS, Amazon Redshift, Apache Derby, Apache Spark, IBM DB2, EXASOL, eXist-db, Firebird, Google Cloud, Greenplum, H2, HSQL DB, Informix, Ingres, InterBase, JavaDB, MariaDB, MaxDB, Microsoft SQL Server, MySQL, Netezza, Oracle, ParAccel, PostgreSQL, PostgresPlus, SAP Hana, SAS, Snowflake, SQLite, Sybase, Sybase IQ, Teradata, VectorWise, Vertica, and Windows Azure.	✓	
	<i>Optional source connectors:</i>	✓	
	Apache Spark, Salesforce, Google Ads, Google Analytics, FreshBooks, Highrise, MailChimp, Microsoft Dynamics, Microsoft Sharepoint, QuickBooks, SugarCRM, SuiteCRM, SurveyMonkey, Twitter, Youtube, Zendesk, Zoho CRM, and many more.		
	Load from CSV, TSV, and other delimiter-separated files.	✓	
	Load fixed-width files.	✓	
	Load from MS Access and MS Excel files.	✓	
	Load from REST services (JSON, XML).	✓	
	Load from webpages.	✓	
	Load from Big Data formats such as Parquet or Feather.	✓	
	Load SAS files.	✓	
	Preview source data directly.	✓	
	Datavault Core Warehouse	Conceptual modeling	✓
		Automatic technical implementation from a logical model.	✓
		Automatic historization of data.	✓
Visually develop a logical model (for business analysts without IT skills).		✓	
Visually implement hubs, links, and satellites loads (matching ELT loads created in real-time).		✓	
Automatic creation of default Data Vault attributes.		✓	
Browse through the data model directly.		✓	
Search the model by hubs, subject areas or systems.		✓	
Multi-user collaborative modeling.		✓	
Load data with one click while modeling to provide instant feedback.	✓		

Business Objects Layer	Automatically de-normalize business objects (facts and dimensions, flat wide outputs or 3nf).	✓
	Automatic grain checks.	✓
	Visual consolidation of data.	✓
	Visual harmonization of column names.	✓
	Automated creation of necessary PIT tables for SCD Type 2 output.	✓
	Perform all necessary join operations without writing code.	✓
Business Rules Layer	Add custom business rules.	✓
	Leverage the full power of SQL.	✓
	Editor interface with auto-complete support.	✓
	Build multi-layered rules.	✓
	Access all core layer objects.	✓
	Preview output for immediate availability to recipients, such as in reporting tools.	✓
	Prepare complex rules for feedback into the Business Vault.	✓
	Add comments to be automatically transferred into the documentation.	✓
	Define error rule sets to assure data quality.	✓
	Automatically merge data from different sources.	✓
Access Layer	Define priorities at the row and column levels.	✓
	Reload-free by providing a virtual layer.	✓
Data Lineage	Show "where used" data lineage from the source to target.	✓
	Provide lineage and impact analysis.	✓
	Browse and filter the data lineage.	✓
	Access the data lineage with any reporting tool or integrate views into a corporate wiki.	✓
Data Profiling / Instant Insights	Prepared views for identifying business keys.	✓
	Create simple charts.	✓
	Analyze data with heat maps and tree charts.	✓
Operations	Access all DWH layers to verify data.	✓
	Directly monitor the current state of created loads.	✓
	Customize automatically created jobs.	✓
	Add individual jobs.	✓
	Add custom loading schedules.	✓
	Easily define job dependencies.	✓
	Automatic parallelization of loading processes.	✓
Model Deployment	Export models into human-readable JSON files.	✓
	Check in models into an enterprise versioning system (GIT, SVN)	✓
	Perform diff/compare between different model states/environments at the logical level.	✓
	Deploy new features or changes directly into another environment.	✓
	Create rollout scripts and check them in with your release management.	✓
	Setup automated CICD process to rollout changes.	✓

Discover the power at www.datavault-builder.com

Contact us today.

Give us a call at +41 32 511 27 89 or email contact@datavault-builder.com to request more information or a product demonstration.