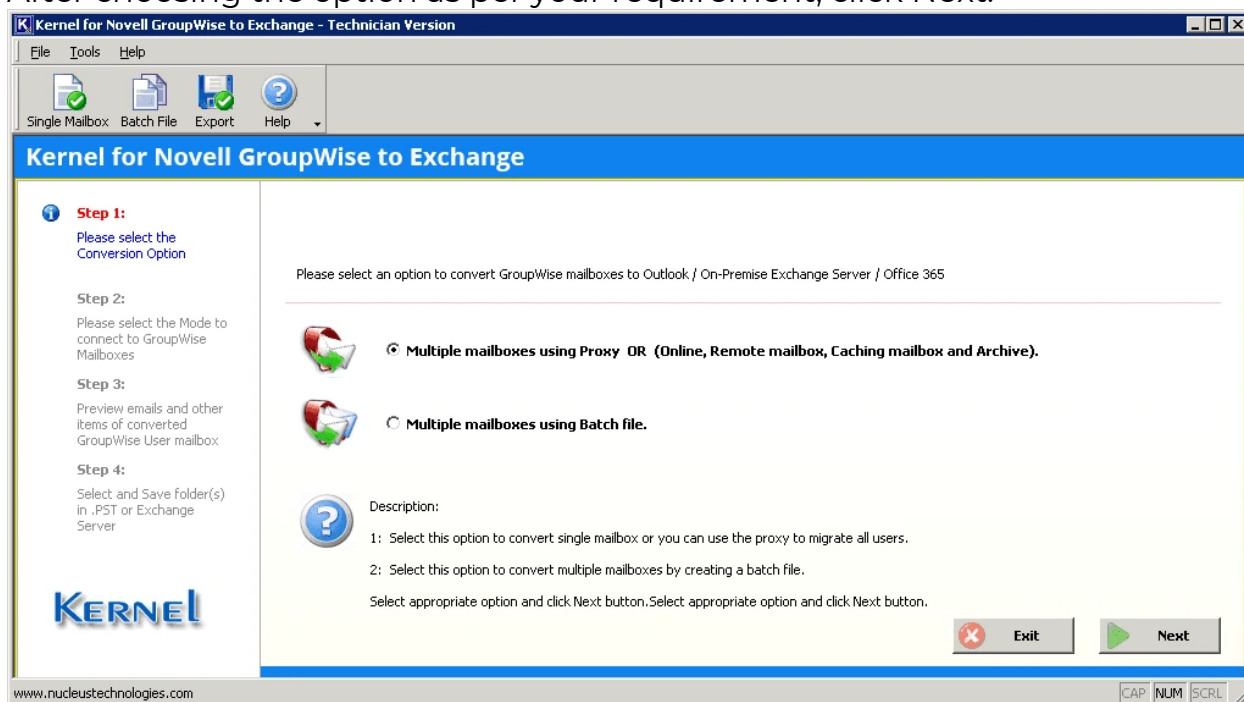


# How To - Kernel for GroupWise to Exchange

**Step 1:** Open the Kernel for GroupWise to Exchange tool and select a migration option:

- Multiple mailboxes using Proxy.
- Multiple mailboxes using Batch file.

After choosing the option as per your requirement, click Next.



**Step 2:** Enter the details of your Novell GroupWise server for connection. Click Next to proceed.

Kernel for Novell GroupWise to Exchange - Technician Version

File Tools Help

Single Mailbox Batch File Export Help

## Kernel for Novell GroupWise to Exchange

**Step 1:**  
Please select the Conversion Option

**Step 2:**  
Please select the Mode to connect to GroupWise Mailboxes

**Step 3:**  
Preview emails and other items of converted GroupWise User mailbox

**Step 4:**  
Select and Save folder(s) in .PST or Exchange Server

**Default Mode**

☐ Use Default

**Login Mode**

User ID:

Password:

☒ Online Address:  Port:

☐ Caching mailbox path

☐ Remote mailbox path

**Command Line Mode**

☐ Command Line (for advance migration)

**Migrate Archive items (In case if you want to migrate Archive items)**

☐ Show Archive

☒ Use default Archive path

☐ Specify Archive path

GroupWise server connection types:-

Default Mode: This mode connects to default mailbox, which is opened in GroupWise client.

Login Mode: This mode provides three types of mode to connect GroupWise mailboxes. Online, Caching mailbox path and Remote mailbox path.

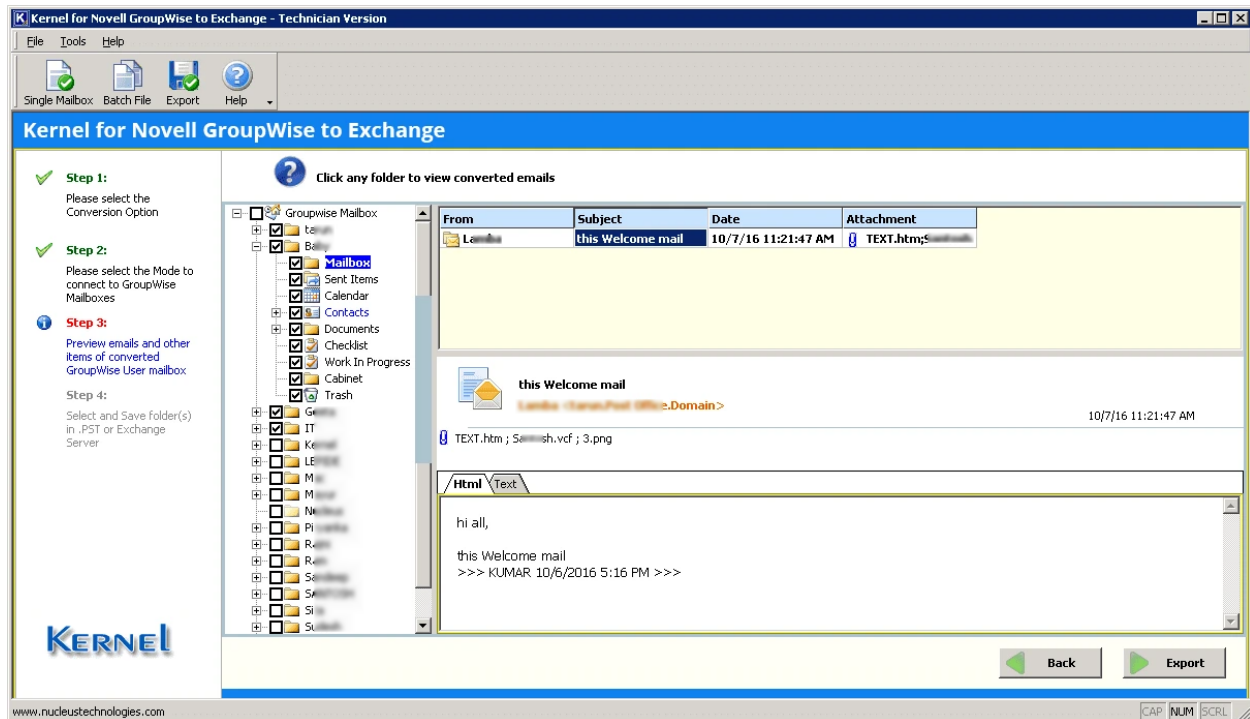
Use Proxy Access: Select this option to access all mailboxes through one proxy user.

Command Line Mode: This mode connects to GroupWise mailbox using command line parameters.

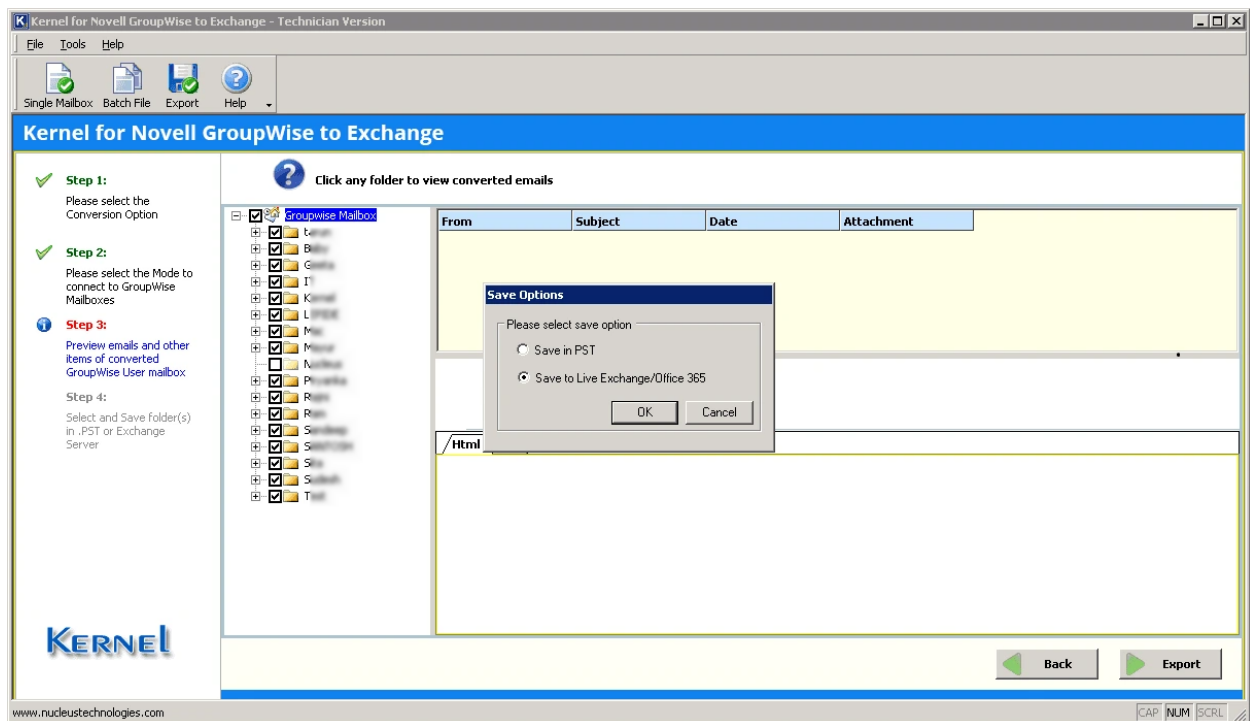
Back Next

www.nucleustechologies.com

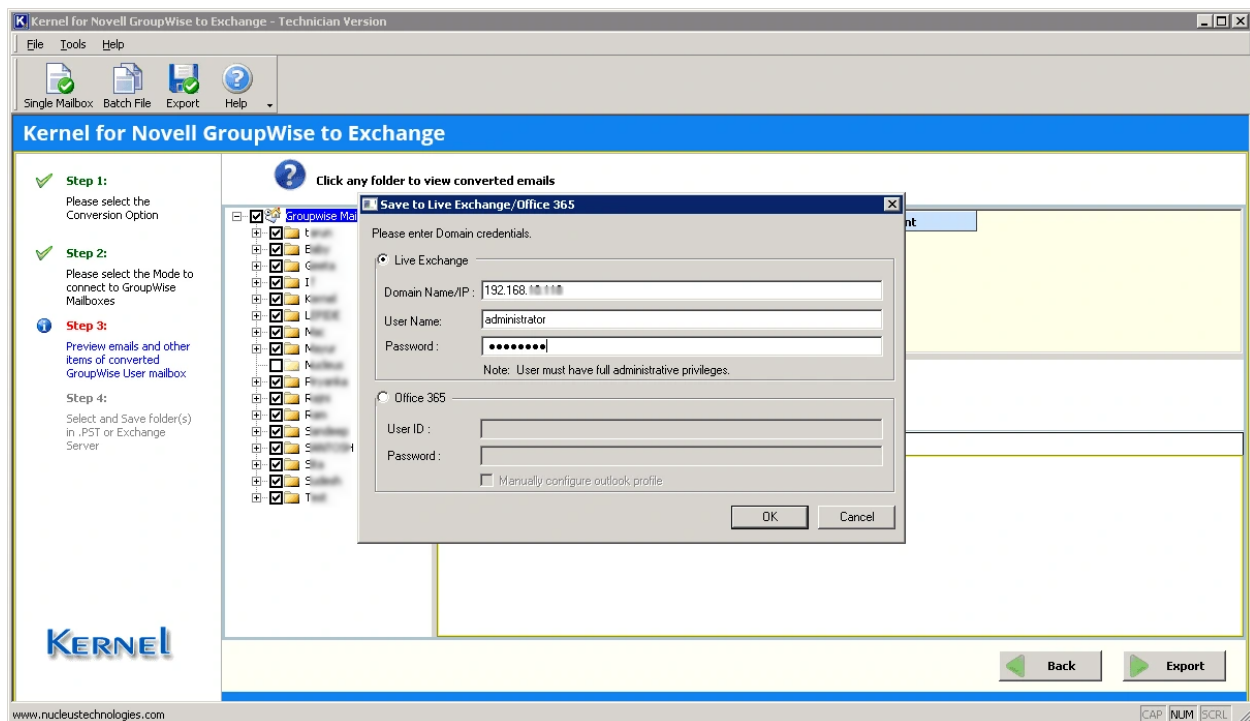
**Step 3:** The tool will preview all your GroupWise account mailbox items after scanning. You can unselect any folder from here to exclude it from the migration. Click Export to continue.



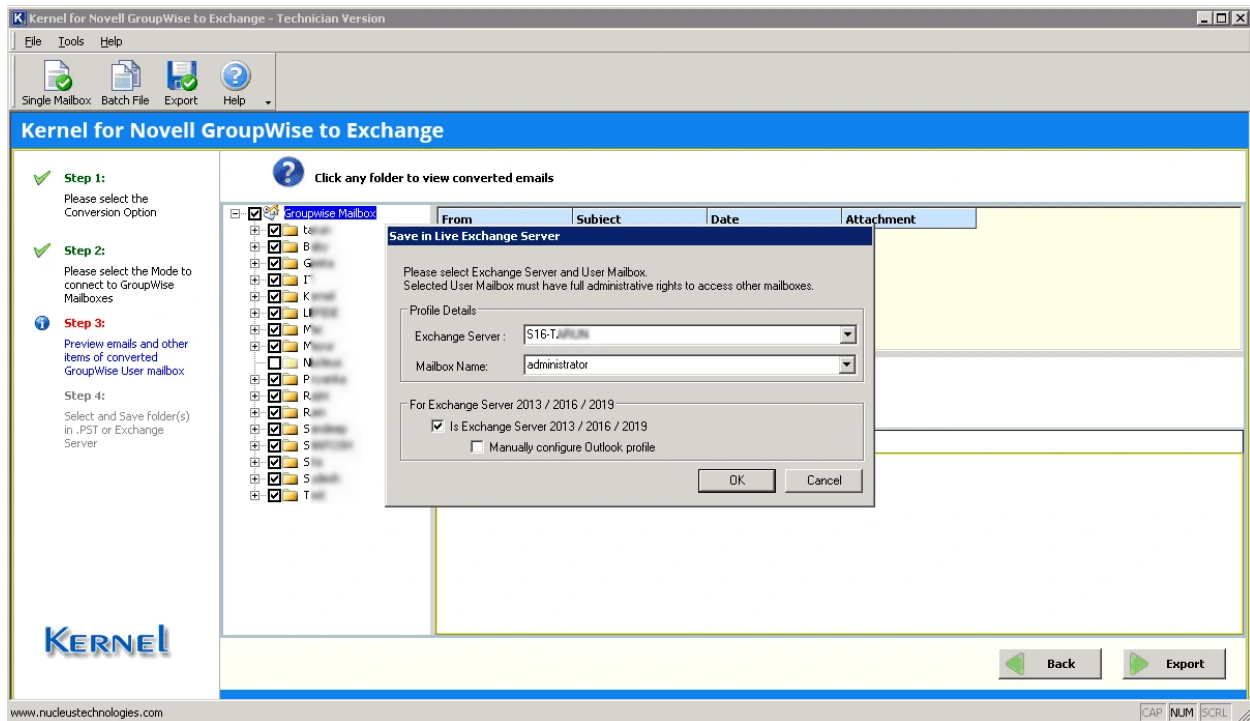
**Step 4:** The tool will ask you to choose a saving option. You can save GroupWise mailboxes to Outlook PST or live Exchange/Office 365. Choose Live Exchange/Office 365 and click OK.



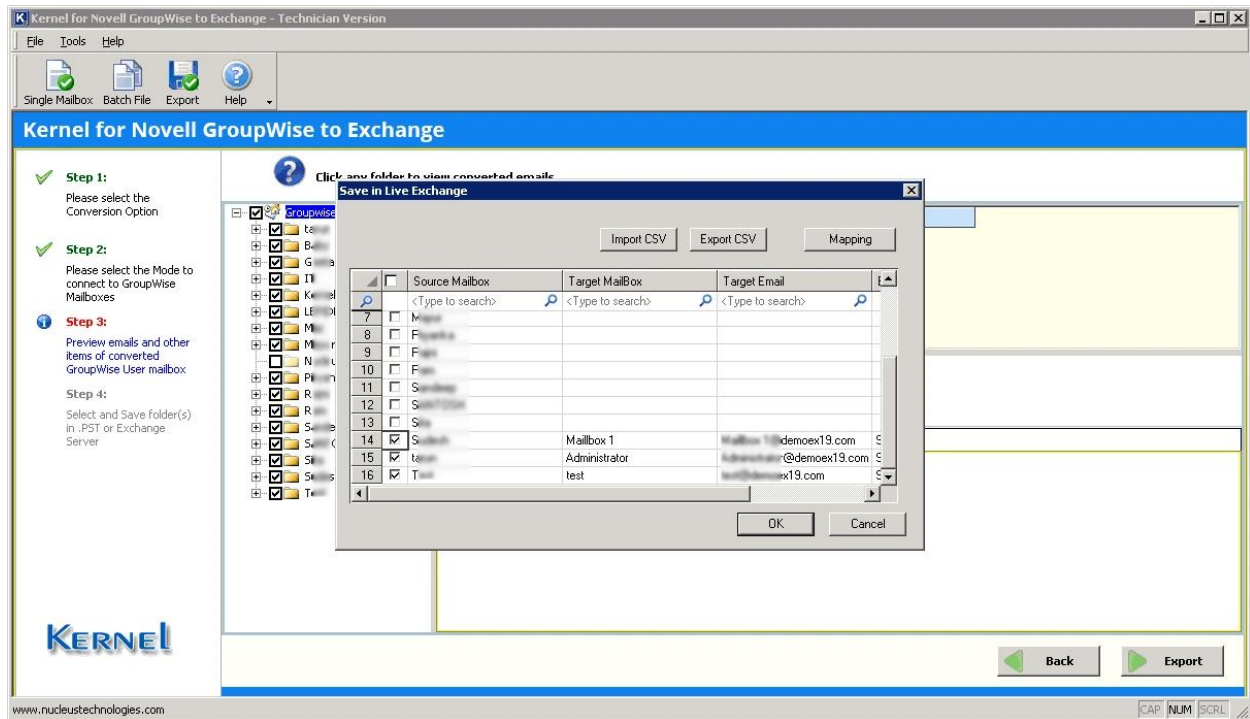
**Step 5:** Provide the login credentials for the destination Exchange Server and click OK.



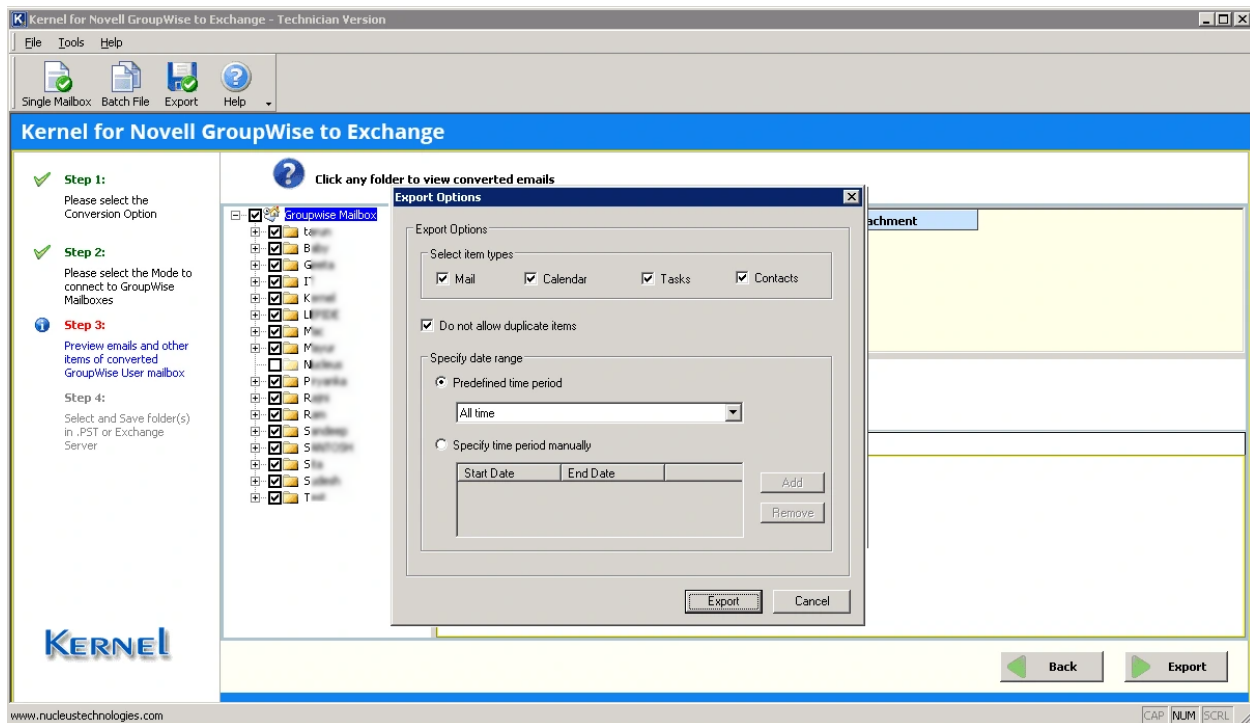
**Step 6:** Select the Exchange Server and Mailbox Name.



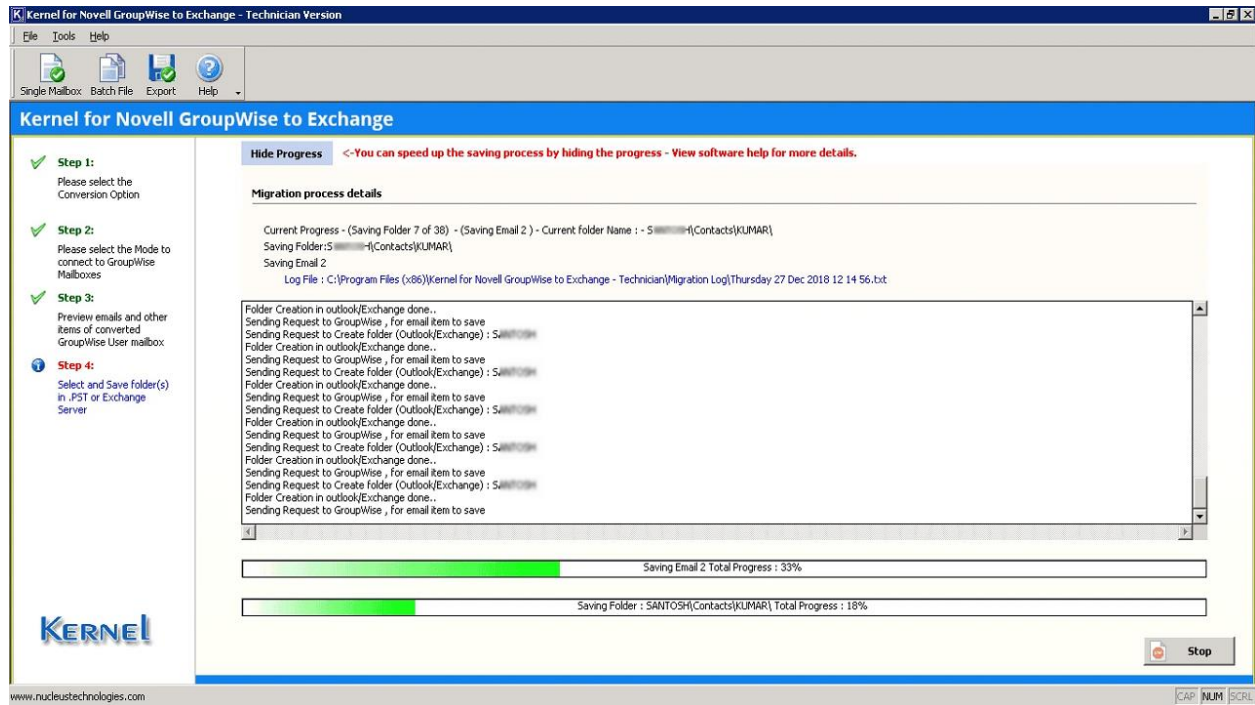
**Step 7:** Map the source mailbox to the target mailbox manually or import a CSV file with source-target mapping details.



**Step 8:** Apply filters as per your needs for the Novell GroupWise mailboxes before you start the migration.



**Step 9:** Novell GroupWise to Exchange migration begins.



**Step 10:** Once the process is completed, you will get a confirmation message.

