

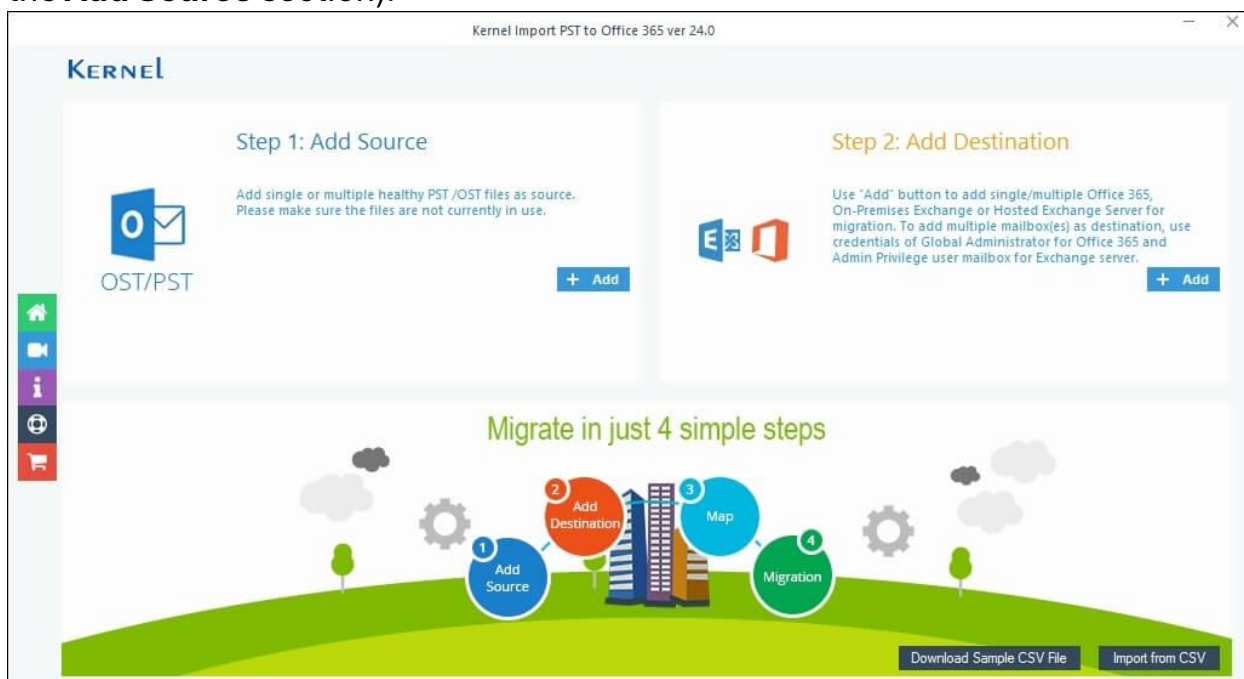
# Kernel Import PST to Office 365

Import unlimited large PST files to Office 365 mailboxes (Primary, Archived, Shared), Public folders, Groups, and Exchange Server. Selective PST to O365 migration with built-in filters. Quickly upload PST to Office 365 with original hierarchy and retaining email read/unread state.

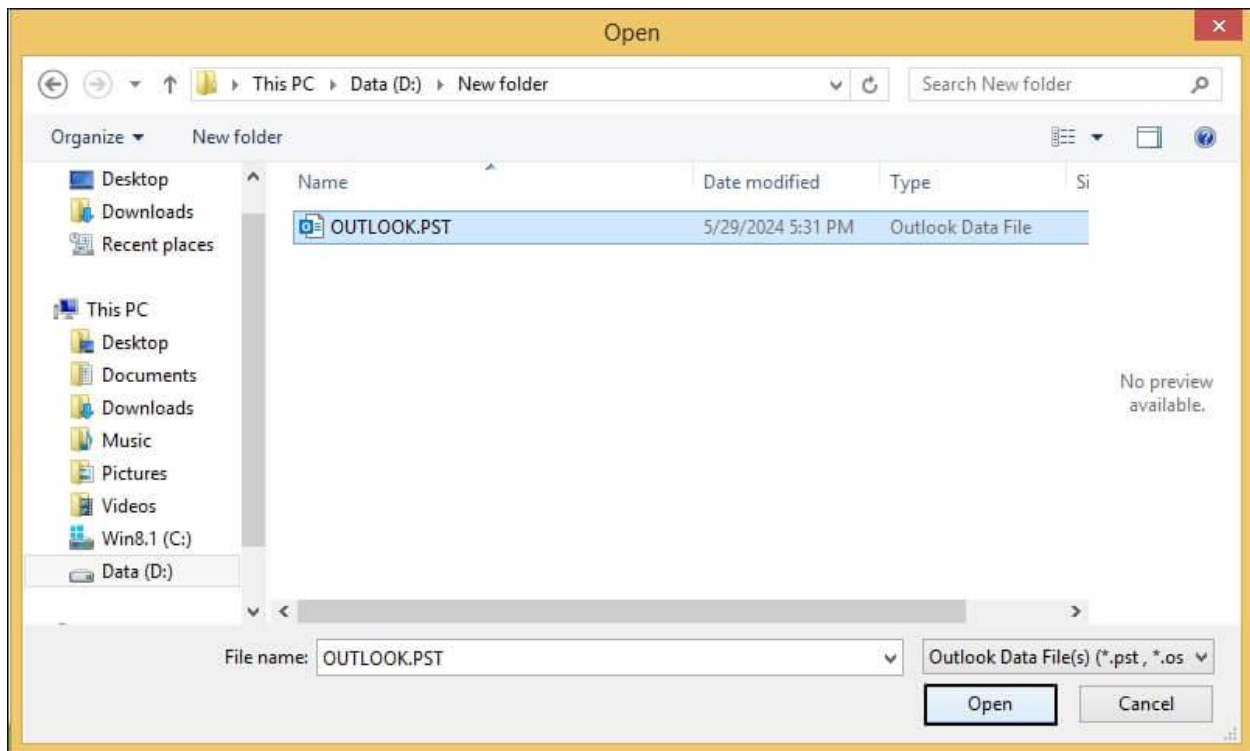
## Importing PST files to multiple Office 365/Exchange mailboxes

Using an Office 365/Exchange account with Global administrator credentials, you can import PST files into multiple Office 365 mailboxes.

**Step 1:** Launch the Kernel Import PST to Office 365 and click the **Add** button (in the **Add Source** section).



**Step 2:** Browse and select the desired PST or OST file(s).




**Step 3:** Now, click the **Add** button (in the **Add Destination** section) and select Modern Authentication mode to login to your Office 365 account.



**Step 4:** In the **Office 365/Exchange Login** window, enter the login credentials of Office 365 account or Exchange (hosted/on-premises) account, whichever is required. Select **List all Mailboxes using above credentials** and click **Get User Mailbox(es)**.

Office 365/Exchange Login


Office 365/Exchange Login

Tenant ID :  ?  
(For Hosted Exchange use Proxy Server Name)

Client ID :

Client Secret Value :

Single Mailbox/Office 365 Group

Mailbox/Office 365 Group Email ID:

List all Mailboxes using above credentials ?

Get User Mailbox(es)    Get Group(s)    Import from CSV    Select All    Unselect All

Search	Mailbox Name
<input checked="" type="checkbox"/>	...@kemela.onmicrosoft.com
<input checked="" type="checkbox"/>	...@kemela.onmicrosoft.com
<input checked="" type="checkbox"/>	...@kemela.onmicrosoft.com
<input checked="" type="checkbox"/>	...@kemela.onmicrosoft.com

### Create Azure AD app for Modern Authentication

To connect to Exchange Online organization that uses Modern authentication, you need to create an Azure AD application, as described in this section.

**Step 1: Create and Register a new app in Azure AD**

To register a new Azure AD application, do the following:

1. Sign into the **Microsoft 365 Admin Center** (with your Global Administrator, Application Administrator, or Cloud Application Administrator account) and go to the **Select Identity** from the list of accessible admin centers.
2. Under the **App registrations** section, select **New registration**:
3. In the **Name** field, enter the application name.
4. Select who can use this application in the Supported account types – use the **Accounts in this organizational directory only** option.
5. Click the **Register** button.

NOTE: Application redirect URI is optional; you can leave it blank on this step.

6. Your application ID is now available in the **Overview** section. Copy it to a safe location.

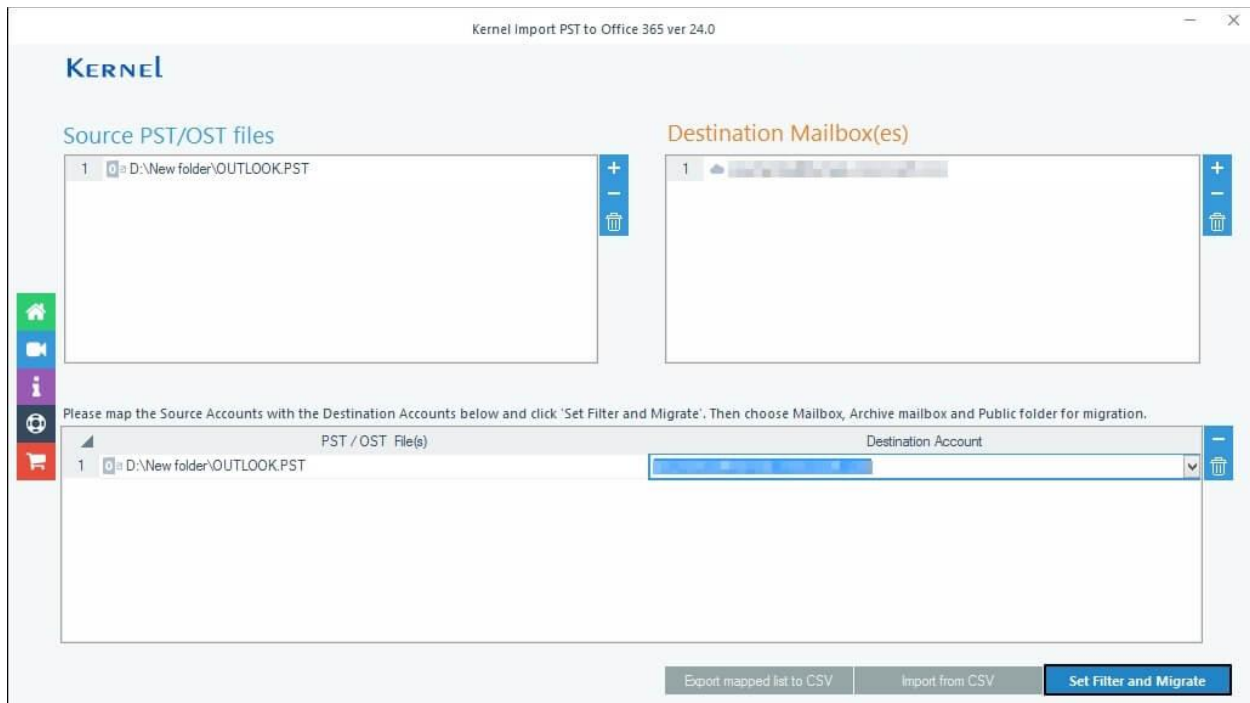
**Step 2: Grant Required Permissions**

**Note:** To migrate to multiple mailboxes, you should use an Exchange/Office 365 account with Global administrator credentials.

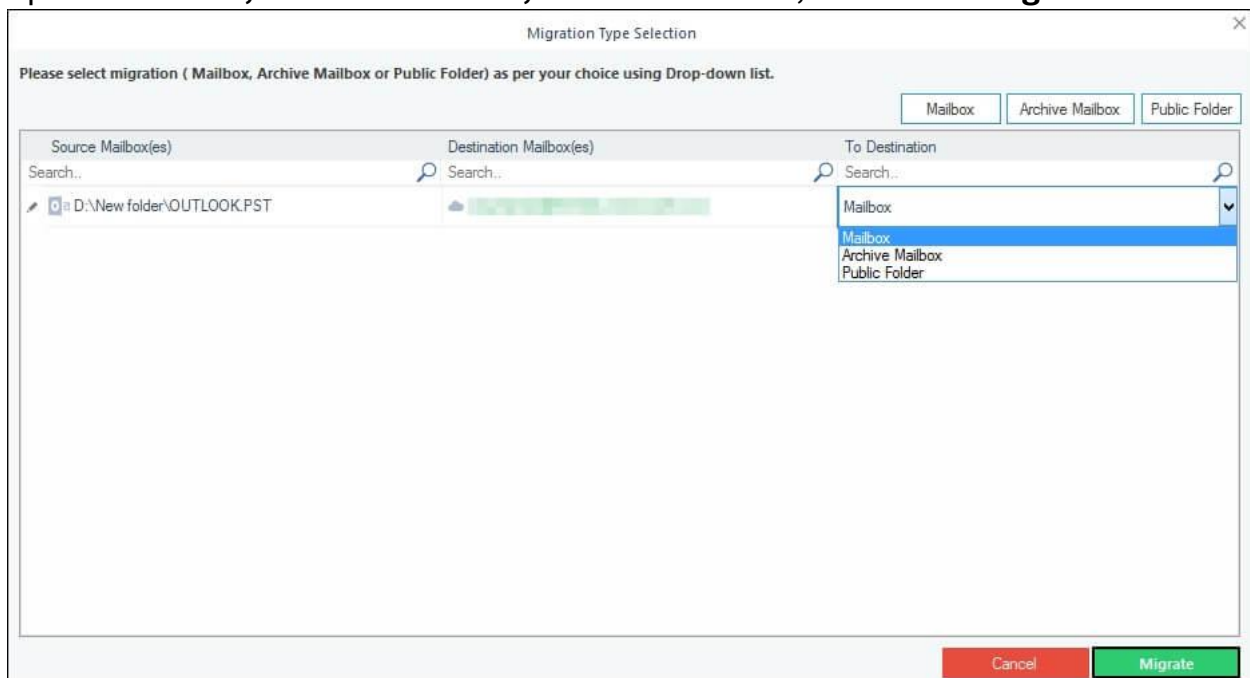
**Step 5:** When all the mailboxes are displayed, select the required mailboxes and click **Add**.

Search	Mailbox Name
<input checked="" type="checkbox"/>	...@kemela.onmicrosoft.com
<input checked="" type="checkbox"/>	...@onmicrosoft.com
<input checked="" type="checkbox"/>	...@onmicrosoft.com
<input checked="" type="checkbox"/>	...@onmicrosoft.com

**Step 6:** To map the PST/OST file to the Office 365 mailbox, select the required Office 365 mailboxes against the PST files. Then click the option **Set Filter and Migrate**.



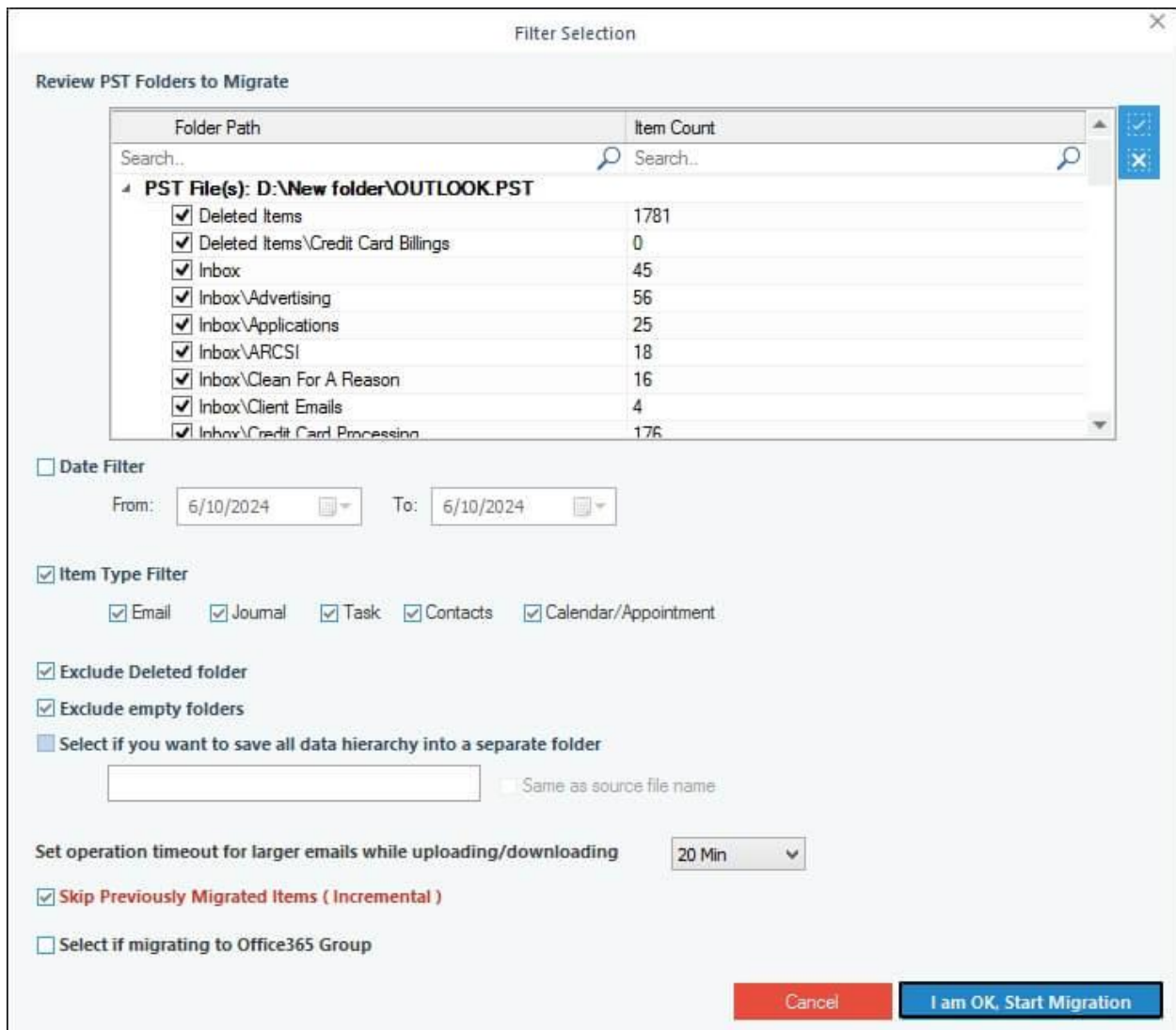
**Step 7:** In **Migration Type Selection** dialogue box, select desired destination option **Mailbox**, **Archive Mailbox**, or **Public Folder**, and select **Migrate**.



**Step 8:** In the **Filter Selection** window, provide the required filtering options:

- **Review PST Folders to Migrate** – Select the necessary folders to migrate.
- **Date Filter** – Provide a date range to filter items.
- **Item Type Filter** – Select the item types that are to be migrated.
- **Exclude Deleted folder** – Select to exclude Deleted items folder from the migration.
- **Exclude empty folders** – Exclude empty folders from the migration.
- **Select if you want to save all data hierarchy into a separate folder** – Provide a folder name (to save the data with hierarchy inside a mailbox folder)
- **Same as source file name** – Select this checkbox if you want to save added PST files in a folder with the same name as the PST file.
- **Set operation timeout for larger emails while uploading/downloading** – Select an upper time limit for migration (the migration will be rejected if it exceeds this time limit).
- **Skip Previously Migrated Items (Incremental)** – Check the box to exclude the already imported data.
- **Select if migrating to Office 365 Group** – Select the checkbox if you are moving PST to the Office 365 group.

Then, click **I am OK, Start Migration**.



**Step 9:** When the process completed window appears, click OK to finalize the process.

Summary

PST File	Folder	Status	Item Count
D:\New folder\OUTLOOK.PST	Deleted Items	Success	1781
D:\New folder\OUTLOOK.PST	Deleted Items\...	Success	0
D:\New folder\OUTLOOK.PST	Inbox	Success	45
D:\New folder\OUTLOOK.PST	Inbox\Advertising	Success	56
D:\New folder\OUTLOOK.PST	Inbox\Applicati...	Success	25
D:\New folder\OUTLOOK.PST	Inbox\ARCSI	Success	18
D:\New folder\OUTLOOK.PST	Inbox\Clean Fo...	Success	16
D:\New folder\OUTLOOK.PST			4
D:\New folder\OUTLOOK.PST			176
D:\New folder\OUTLOOK.PST			7
D:\New folder\OUTLOOK.PST			1
D:\New folder\OUTLOOK.PST			35
D:\New folder\OUTLOOK.PST			67
D:\New folder\OUTLOOK.PST			4
D:\New folder\OUTLOOK.PST			7
D:\New folder\OUTLOOK.PST			74
D:\New folder\OUTLOOK.PST	Inbox\Online Q...	Success	387
D:\New folder\OUTLOOK.PST	Inbox\Payroll	Success	11
D:\New folder\OUTLOOK.PST	Inbox\Personal	Success	63

Information

Process completed. Please save the report to CSV

OK

Stop

**Note:** To save the report, click Save report to CSV. Provide a new name and save it.

**Step 10:** Click OK to exit the tool.

Summary



PST File	Folder	Status	Item Count
D:\New folder\OUTLOOK.PST	Inbox\Graphic ...	Success	67
D:\New folder\OUTLOOK.PST	Inbox\GSDBA	Success	4
D:\New folder\OUTLOOK.PST	Inbox\Insurance	Success	7
D:\New folder\OUTLOOK.PST	Inbox\MasterMind	Success	74
D:\New folder\OUTLOOK.PST	Inbox\Online Q...	Success	387
D:\New folder\OUTLOOK.PST	Inbox\Payroll	Success	11
D:\New folder\OUTLOOK.PST	Inbox\Personal	Success	63
D:\New folder\OUTLOOK.PST	Inbox\Quixtar	Success	4
D:\New folder\OUTLOOK.PST	Inbox\Resume	Success	6
D:\New folder\OUTLOOK.PST	Inbox\School E...	Success	24
D:\New folder\OUTLOOK.PST	Inbox\Website	Success	14
D:\New folder\OUTLOOK.PST	Sent Items	Success	130
D:\New folder\OUTLOOK.PST	Calendar	Success	759
D:\New folder\OUTLOOK.PST	Sync Issues	Success	284
D:\New folder\OUTLOOK.PST	Sync Issues\Co...	Success	5
D:\New folder\OUTLOOK.PST	RSS Feeds\Micr...	Success	14
D:\New folder\OUTLOOK.PST	RSS Feeds\Micr...	Success	22
D:\New folder\OUTLOOK.PST	RSS Feeds\MSN...	Success	73

Ok

Save report to CSV

