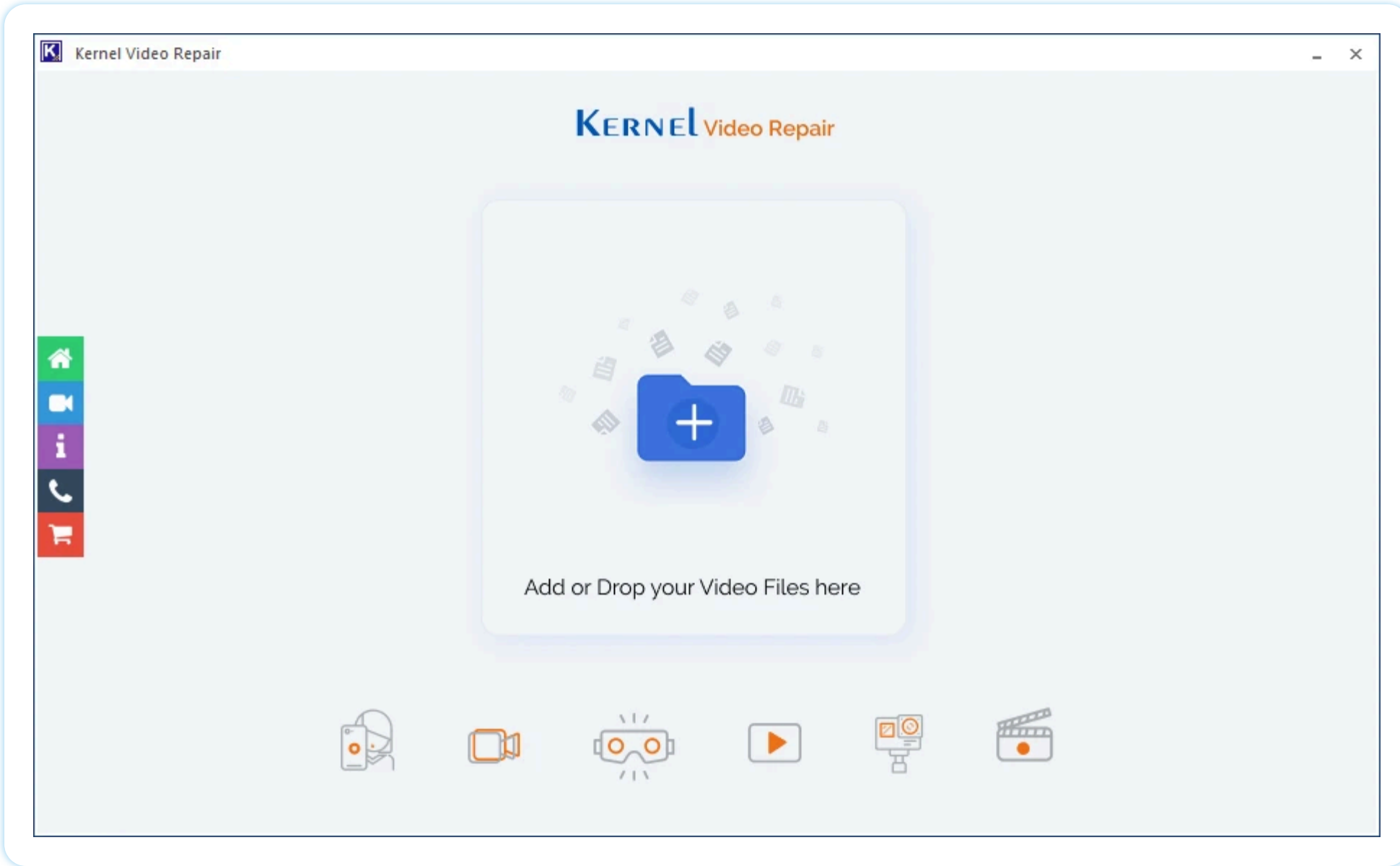
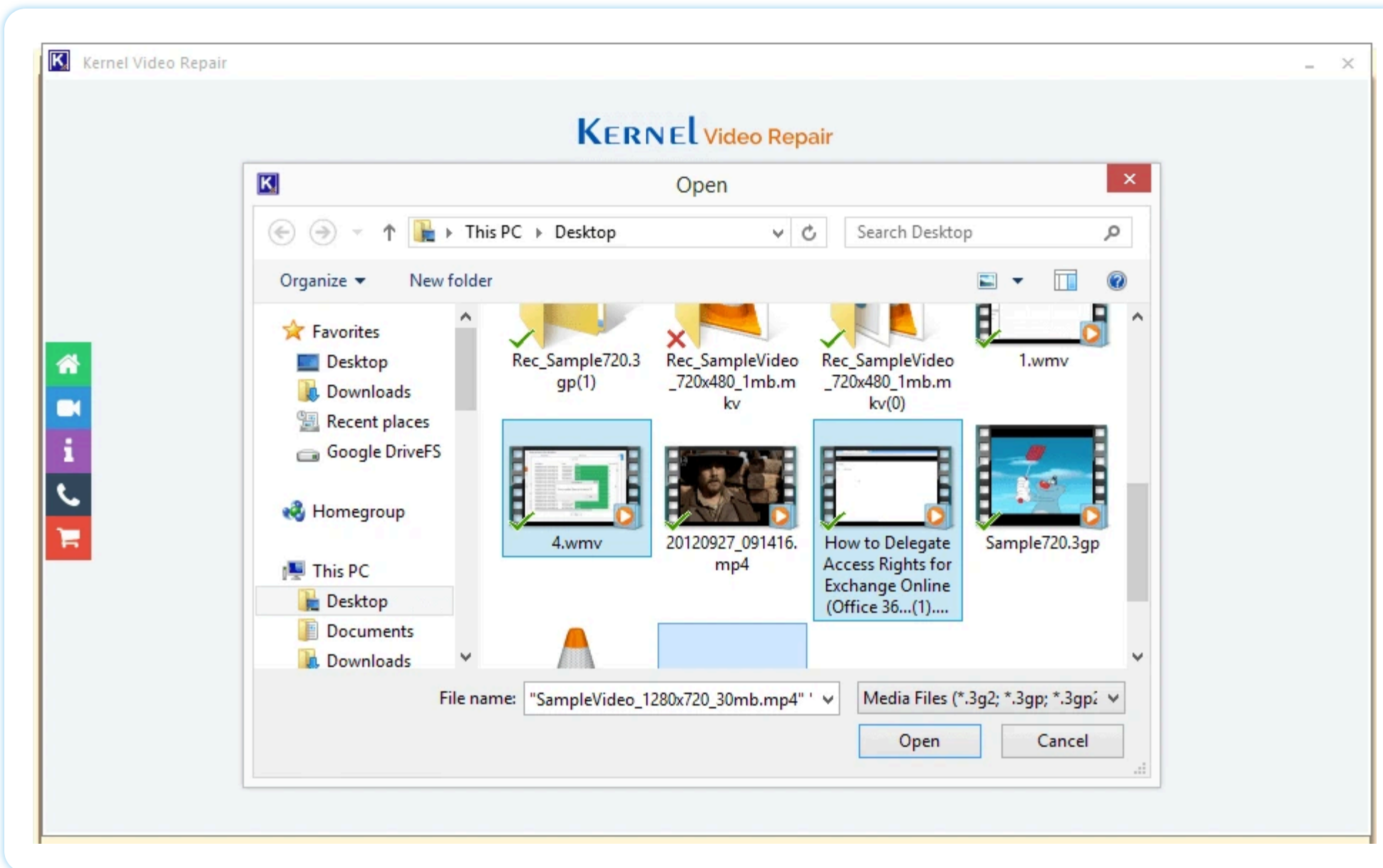


Screenshots - Kernel Video Repair software

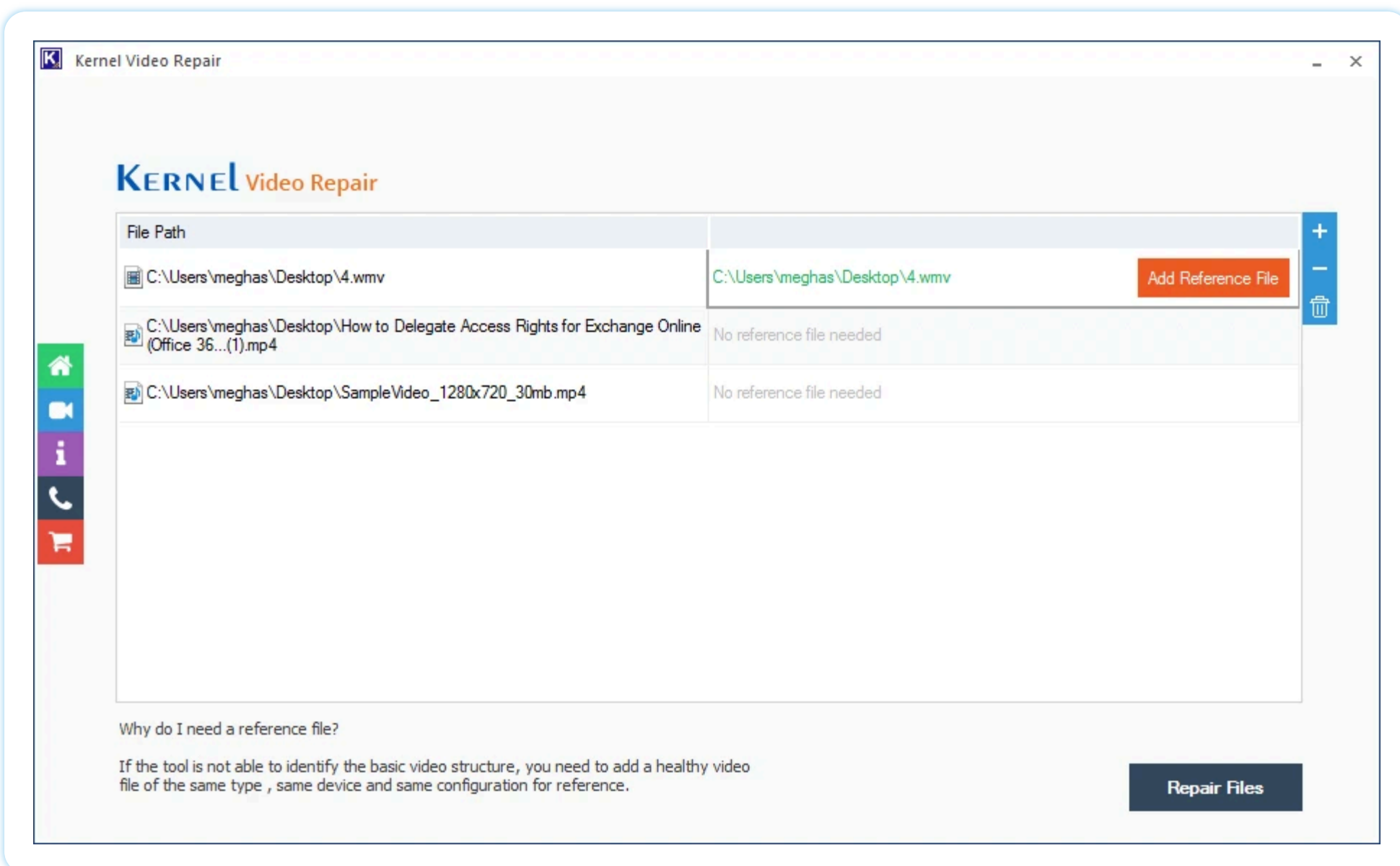
Step 1: Click on Add button to browse corrupt videos or use drag/drop option directly.



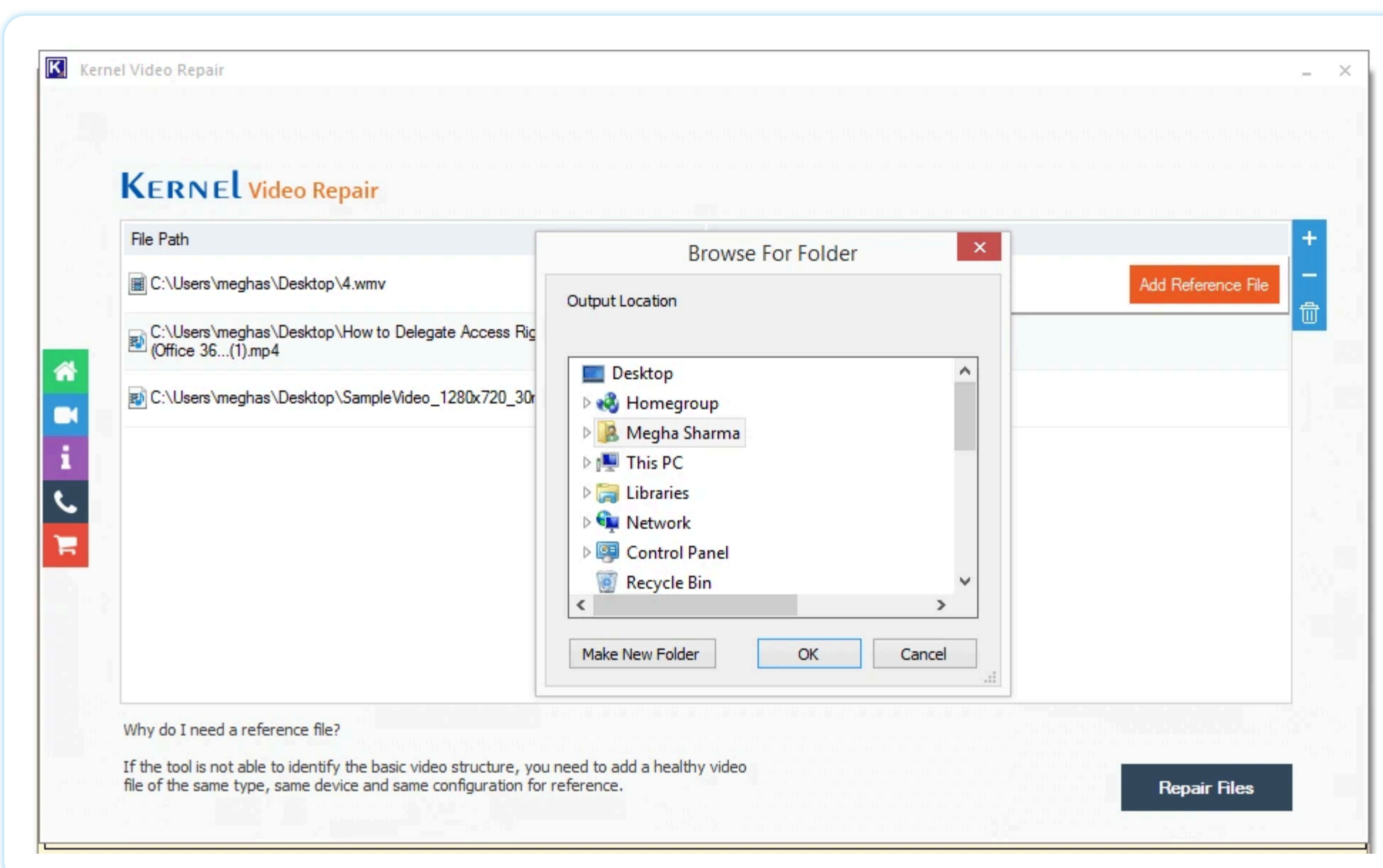
Step 2: Select corrupt video files from system location for repair.



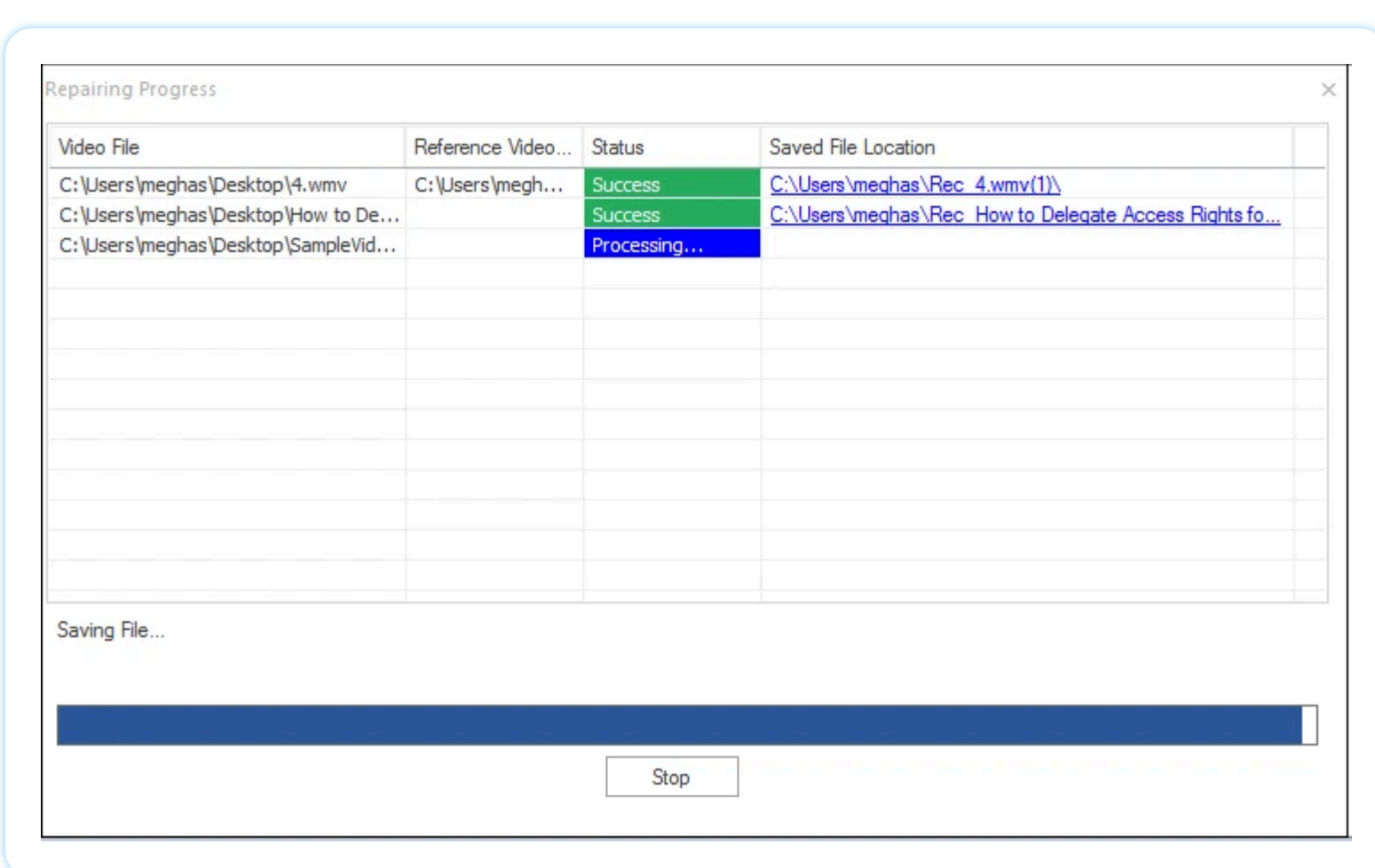
Step 3: Add Reference file (if asked) and click on Repair Files to start the process.



Step 4: Browse the destination location to save the repaired video files.



Step 5: Progress of the video files in queue for repair.



Step 6: Successful repair of the corrupted video files with status.

