

# Worker OS- Agentic AI for Care & Operations Automation

Healthcare Vertical



# Digital Innovation Partner



4400+

Global Team Members

1500+

Projects Delivered

25+

IP Accelerators

170+

Clients (Long-term Relationships)



## INDUSTRY CERTIFIED

ISO

9001:2015

ISO

27001:2013

ISO

27701:2019

CMMI

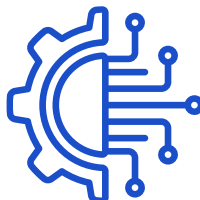
V2.0 Level 3

PCI DSS

Compliant

HIPAA

Compliant



Backed by Capital Square Partners, TA Associates, True North and CPPI



US-headquartered Tech Services firm with 100% focus on Innovation & Product Engineering

## HOW WE WORK?

### Data at Heart

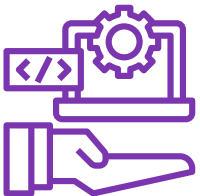
Accion Labs reimagines the possibilities for digital transformation from innovation to growth

### Digital in Thinking

Scalability, manageability, robustness, and efficiency are always our top priorities

### Innovation in Approach

Everything is planned to minute detail, ensuring high-quality deliveries to clients every time



Fastest Growing Tech Services Firm for 5 years in a row. Organic Growth & 9 Capability-centered acquisitions



Emerging Tech first approach - AI/GenAI Applications, investments in IP, Tooling and Innovation

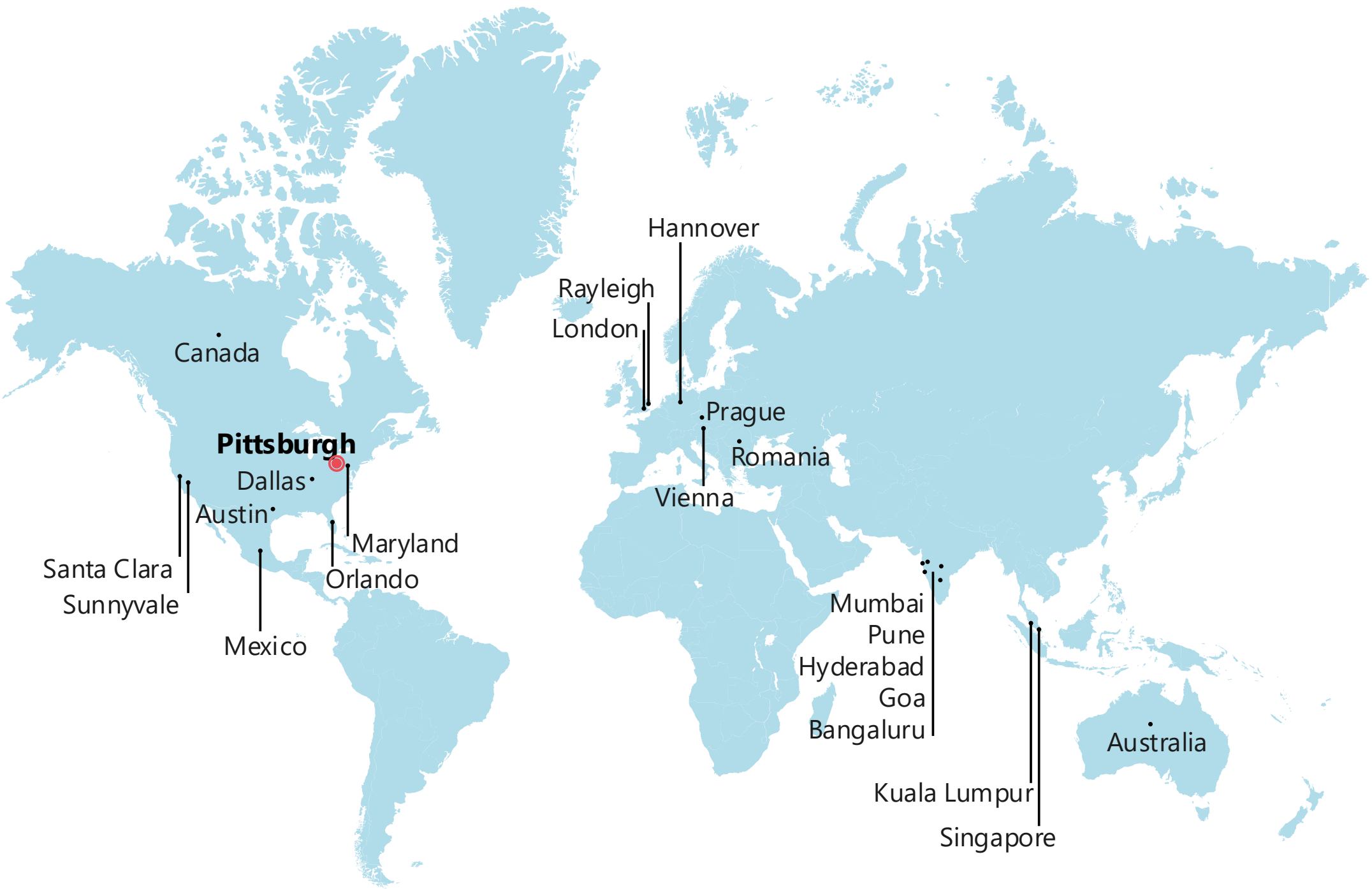


Culture of Outcome, Transparency, Work-life Balance, Innovation & Lifelong Learning



Hands-on Management with Entrepreneurial, Engaged and Value-based Leadership Style

# Global Presence and Business Overview



**4400+**  
Global Team Members

---

**23+**  
Global Delivery Locations

---

**41+**  
Centers of Excellence Driving Innovation

---

**34+**  
Proprietary IPs Developed


---

**50+**  
GenAI Implementation Delivered

---



# Microsoft credentials and awards




Microsoft

Microsoft Partner

# Winner

2023 Partner of the Year

Analytics Award



# Microsoft

Solutions Partner

Data & AI

Digital & App Innovation

Infrastructure



# Fabric Featured Partner





# Microsoft Partner

Advanced Specialization

Analytics on Azure

Data Warehouse Migration to Azure

Kubernetes on Azure

Migrate Enterprise Applications to Azure

Infra and Database Migration to Azure

Amongst Top Microsoft Partners in USA



# Microsoft Partner

Gold Cloud Platform

Gold Application Development

Gold Data Analytics

Gold Data Platform

Silver Security





Microsoft Partner

# Power BI



# AWARDS FINALIST

Microsoft Partner of the Year 2020

# APPLICATION INNOVATION

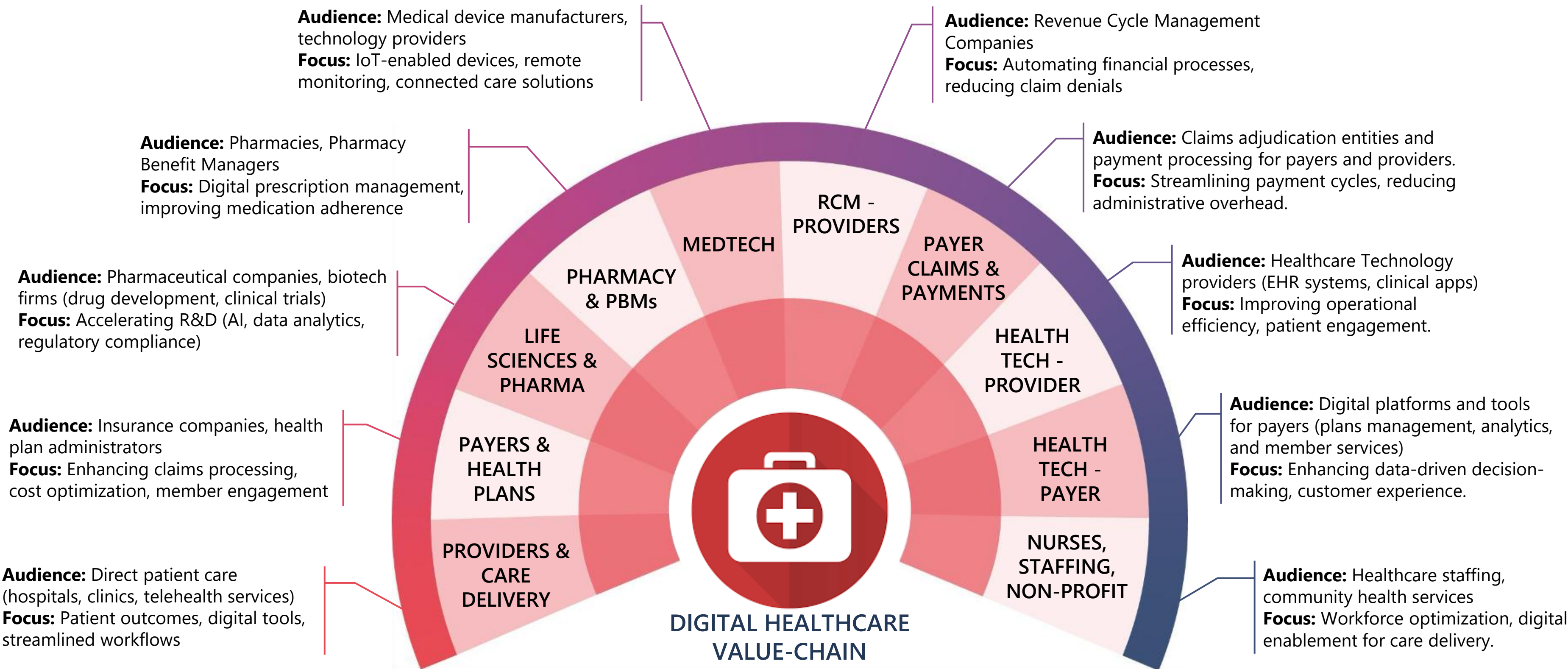


# Accion's Healthcare Expertise

A series of overlapping, wavy, purple lines that create a sense of motion and depth across the middle of the slide. A solid purple horizontal line is positioned directly beneath the title text.

# Enabling Digital Transformation Across Healthcare

Trusted by clients across all major segments of healthcare value-chain





Digital Healthcare Offerings

Provider Workflow Innovation	CAHPS And NPS
Smart Hospitals / Hospital Of The Future	Optimize Diagnostic Workflows
Enhance Care Coordination With Actionable Insights	Transform Image Sharing & Patient Care Coordination
Enhance Clinician & Employee Experiences	Analytics And Insights On Imaging
Enhance Patient Engagement & Experience	Optimize Operations & Data Insights
Population Health Management	Core Operations Modernization
Prior Authorization	Care Management
Revenue Cycle Management	Ai-powered Contact Center
Smart Doctor/Nurse/ Staff Scheduling	Optimized Supply Chain
SAP on Azure	Cloud Migration
Legacy/Application Modernization	DevSecOps & AI-Powered Operations

Accion Solution Accelerators

**Worker OS on Azure**  
*Agentic AI for Care & Operations Automation*

**VBCaaS**  
*Value-based Care As a Service*

**CTaaS**  
*Claims Testing as a Service*

**Azure IoT Accelerator**  
*Reference framework and accelerator*

**SAP on Azure**  
*AI-driven automated cloud migration and operations*

**Legacy Modernization**  
*3X faster Cobol/Legacy AI-driven code modernization*

Accion Healthcare Services

Innovation Consulting

Healthcare Digital Strategy  
Value Chain & Process Assessments  
AI, Data & Cloud Readiness Assessment  
Design Thinking

Design & Execution

Agentic AI Solutions & Intelligent Automation  
Data Platform, Fabric, and Analytics Implementation  
Legacy Modernization to Cloud-Native Azure

Accelerators & Microsoft Alignment

Faster Execution with Ready Accelerators  
Strong governance, security & compliance  
Eligible for ECIF, Azure Innovate, Assessments, Design Wins

# Introduction to Breeze Worker OS

---



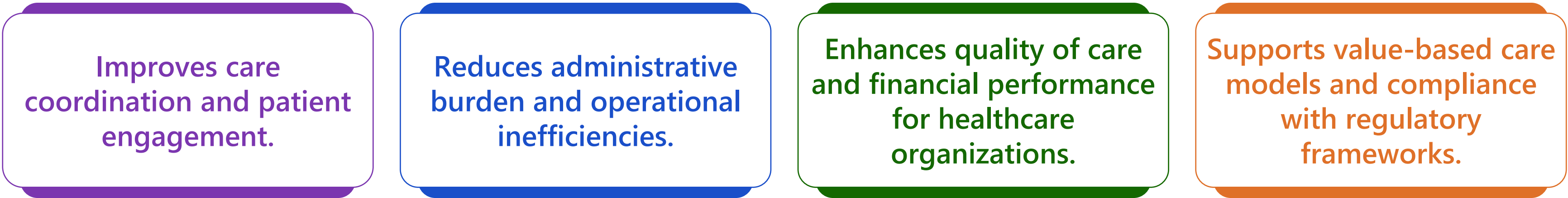
Breeze Worker OS is an AI-powered healthcare operating system designed to:

- Integrate disparate healthcare data sources (EMRs, claims, labs, social determinants).
- Apply advanced analytics and machine learning for risk prediction, quality measurement, and performance optimization.
- Automate workflows and care processes (prior authorization, claims, patient engagement).
- Enable real-time decision support for providers and payers.

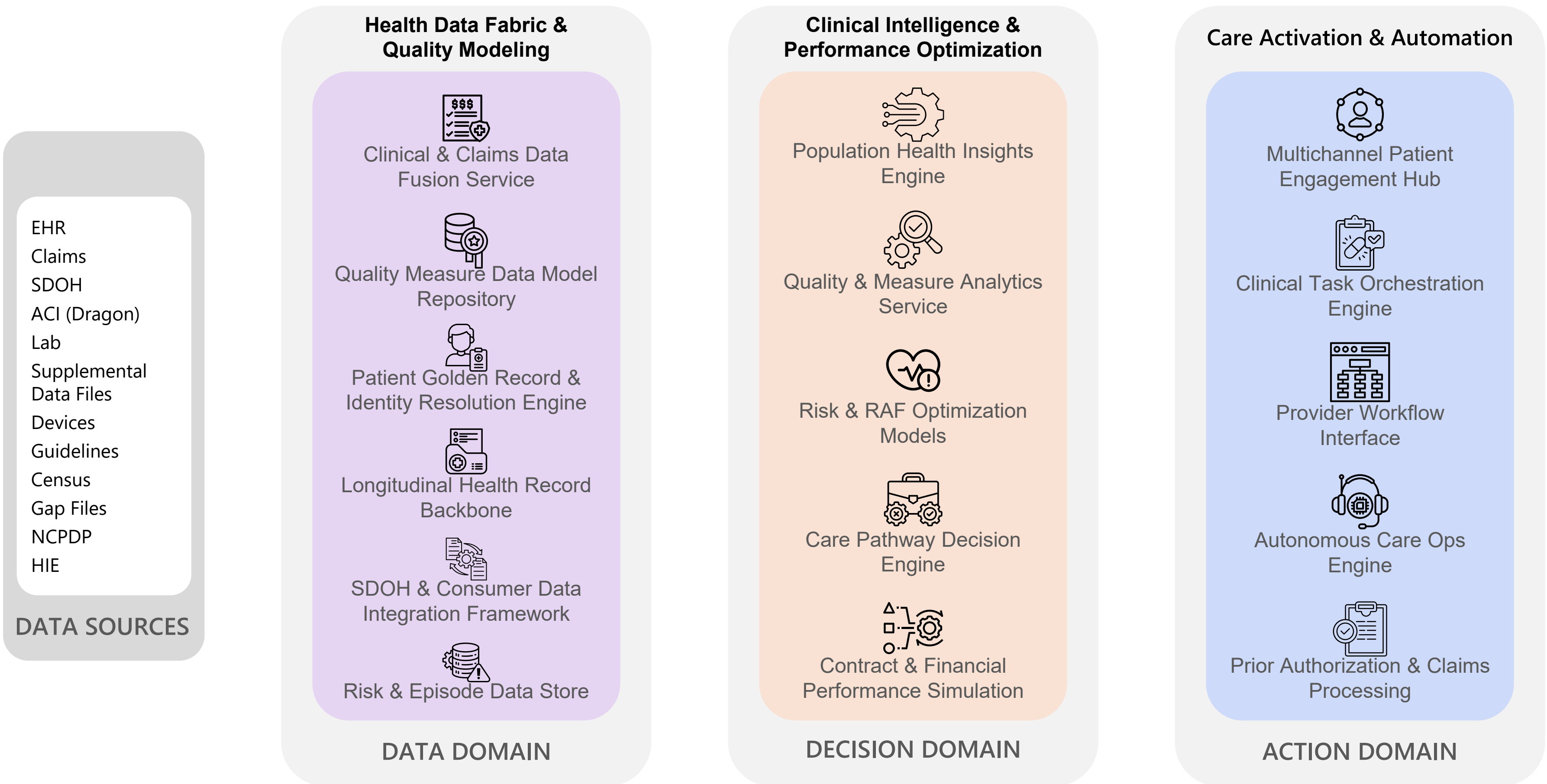
## How Does it Work:



## Benefits:

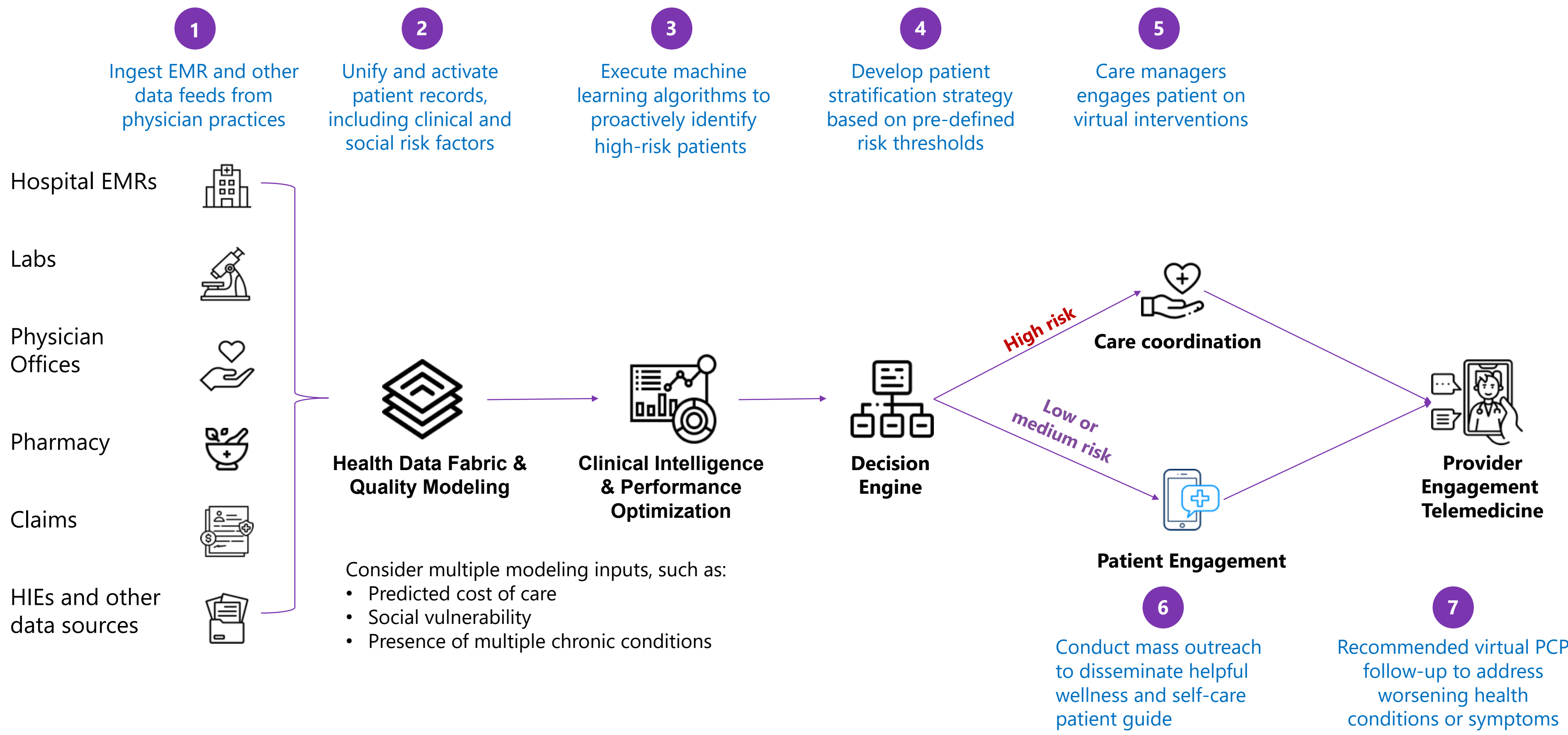


# Breeze Worker OS for Digital Healthcare – Solution Accelerator

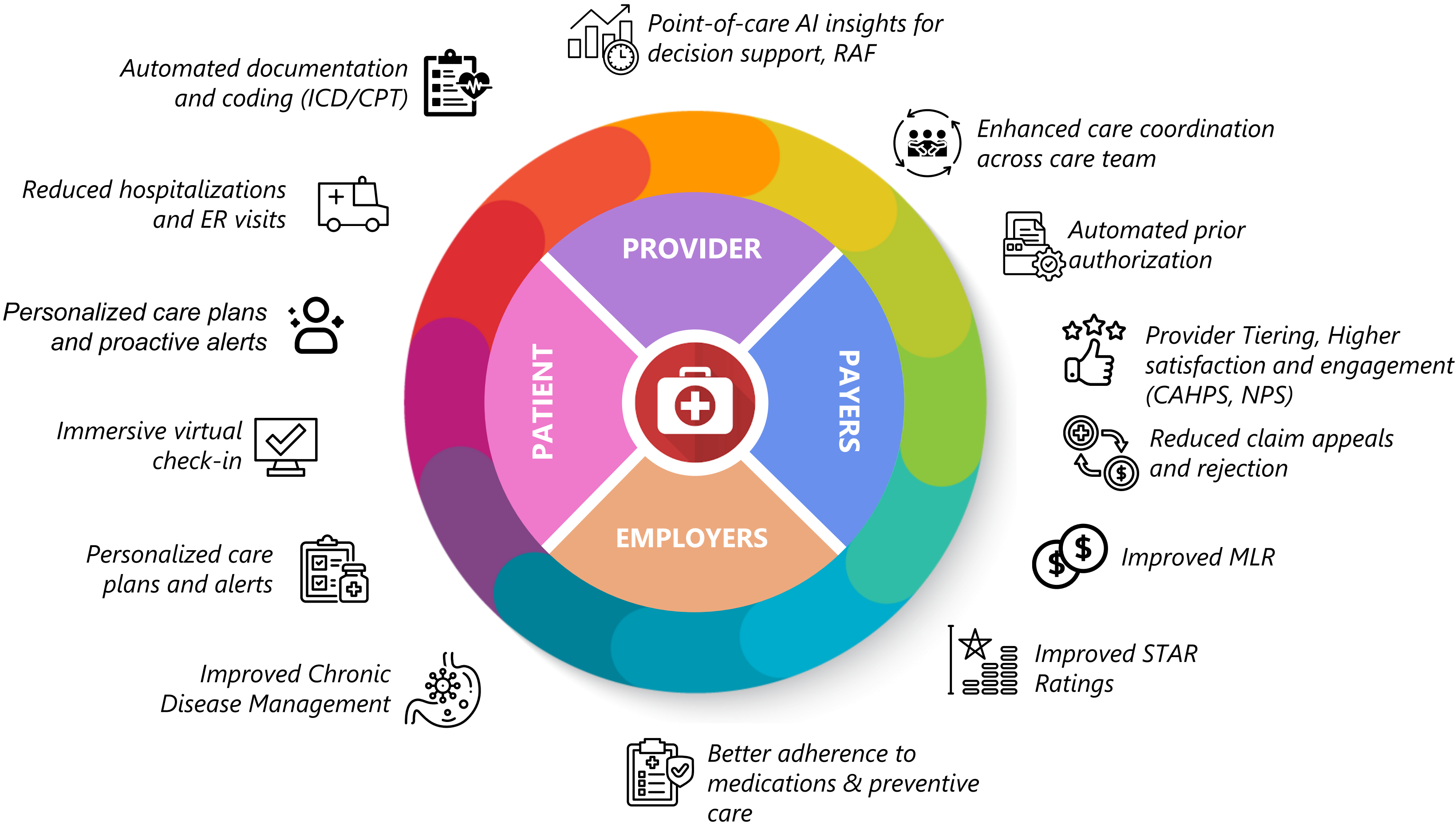




# Breeze Worker OS In Action – Sample Workflow



# Breeze Worker OS – Enabling Outcomes with Smart Healthcare





# Case Studies

A series of overlapping, wavy lines in shades of purple and blue that flow across the middle of the slide, creating a sense of movement and depth.

# Driving Customer Success in Healthcare



## Intelligent Care Management & Authorization Platform

*Provider:*  
Enhance care management with actionable insights / precision health

Real-time insights and Intelligent workflows reducing ED visits, hospitalizations, and PA delays resulting in 30–60% reduction in manual care-management tasks



## Patient Experience Digital Platform

*Provider:*  
Enhance patient engagement & experience

Seamless, unified digital check-in process integrating practice management (Encompass) and EHR platform to eliminate paper-based workflows, reduce manual scanning, and ensure compliance through digital signatures and PDF generation



## Pharmacy Benefits Management

*Payor:*  
Core Operations Modernization

AI-driven system to streamline the manual testing process of Claims management and hi-speed comparison algorithm to find mismatches



## Patient Engagement & Self-Service

*Provider:*  
Enhance patient engagement & experience

We used advanced analytics and AI to quantify Libre's impact on A1c, ED avoidance, and total cost of care, helping Abbott prove measurable VBC value to payers and ACOs.



## AI-Powered Staffing

*Provider:*  
Enhance employee experience

AI-driven platform accelerating matching of 2M+ healthcare workers to 190K+ active job orders with proactive candidate-fit intelligence



## Platform for Healthcare Payments

*Payor/Provider:*  
Revenue Cycle Management

Automated AI appeal generation from claim denial codes—saving providers 70% in manual effort while increasing successful appeals by 25%.

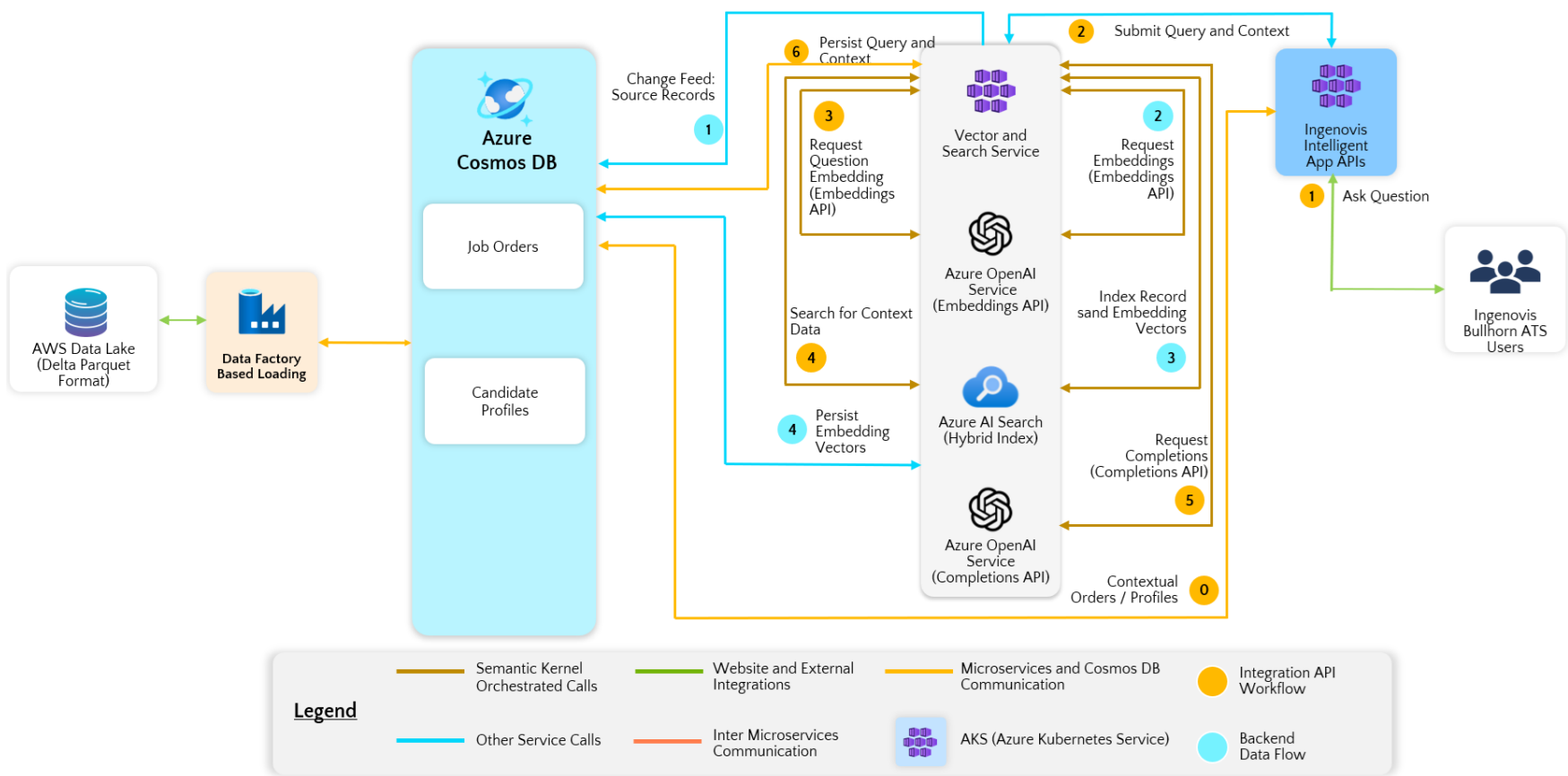


## Overview

Build Intelligent APIs on Azure using Azure OpenAI to expedite matching ~2M candidates with ~190K active jobs orders and proactively identifying candidate fit

## Purpose Solved

- Order Prioritization – 106 attributes-based scoring and ranking for likelihood of filling job by AI Model.
- Qualification Match – LLM understands requirements, evaluate candidates and provide structured, actionable results to Recruiters.
- Candidate Prioritization – Model evaluates specific attributes and provide per candidate's score of likelihood to accept.
- Auto-match / Recommendation – Model matches incoming orders to available candidates automatically. For candidates with complete profile, Recruiters just need consent to submit.



## Business Deliverables

1. Qualification Matching and Candidate Prioritization:
  - A. Contextual results personalized for the recruiters.
  - B. Results generated PI for qualification matches and candidate's prioritization.
2. Recommendation Engine
  - A. Identify Top N candidates for a given job order.
  - B. Identify candidates that are most likely to accept.
3. Auto Matching and Candidate API
  - A. On arrival of new records (Job Orders / Candidates) - automatically match profiles.
  - B. Notify Recruiters of missing data / low probability closures and proposed action items for resolution.
4. Central Monitoring Dashboard
  - A. Monitor performance of the Platform – accuracy of Qualification Match, Candidate Prioritization. time taken to close job orders, Automatic job to Candidate matching success rate and more.



A large, abstract graphic composed of many thin, overlapping wavy lines in various colors (red, blue, green, purple) that create a sense of movement and depth across the upper half of the slide.

# Thank you.

Enhancing Lives by Transforming Businesses through Innovation



[info@accionlabs.com](mailto:info@accionlabs.com)



[www.accionlabs.com](http://www.accionlabs.com)

