



# THE DATA SECURITY ENGAGEMENT

Identify data security risks in your organisational data.

## PARTNER-LED ENGAGEMENT HIGHLIGHTS



Understand the risks of Dark Organisational Data



Receive an analysis and report on findings and associated risks



Learn about tools and services that can help mitigate risks



Learn about the risks organisational insiders may impose



Assess your environment against key data protection standards



Explore recommendations and next steps

More than

# 80%

of leaders cited leakage of sensitive data as their main concern around adopting Generative AI

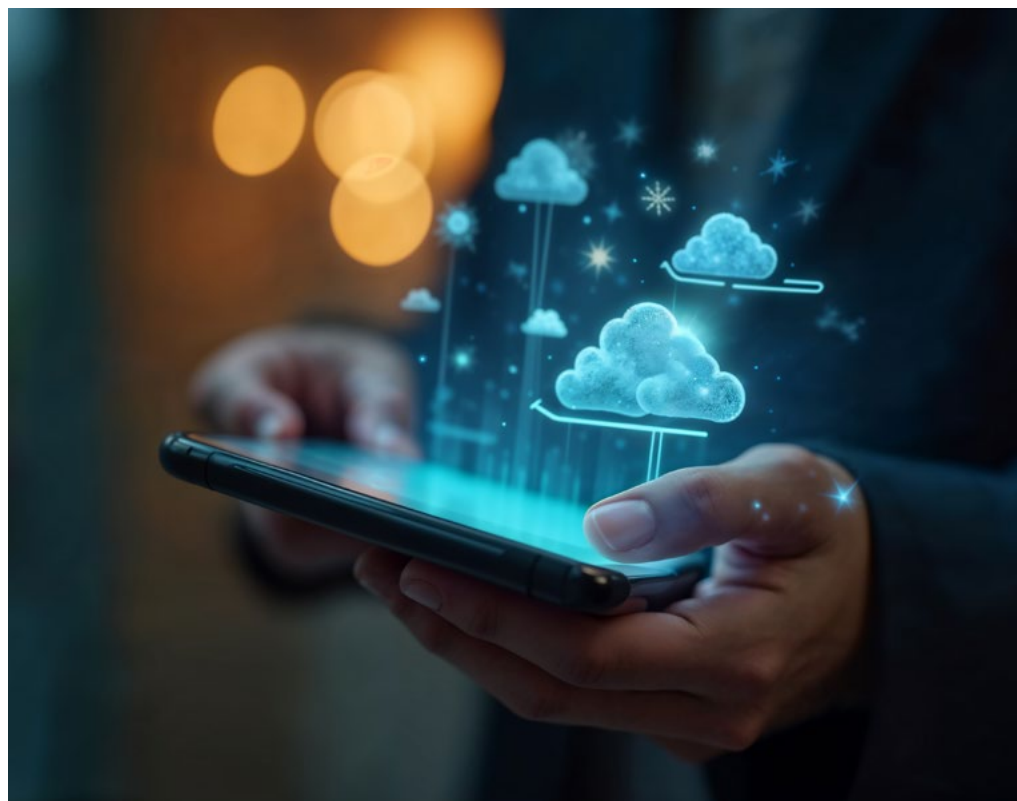
In today's digital age, data is the lifeblood of any business, and its security is paramount. As the datasphere is projected to double by 2026, the sheer volume and complexity of data will only increase, making it a prime target for security incidents. With the rapid deployment of generative AI apps, data security risks are escalating, demanding robust protection and

governance. Yet, an alarming 30% of decision-makers lack visibility into their sensitive data's location or nature, leaving their digital estate vulnerable. It's time to take control and safeguard your business's future. Don't wait for a costly data breach to realise the importance of data security. Secure your data now, and stay ahead in the game of digital defense.

## INTELLIGENTLY INVESTIGATE AND TAKE ACTION ON DATA SECURITY RISKS

Detecting, investigating, and acting on data security risks in your organisation is critical to ensuring trust, creating a safe workplace and protecting company assets and employee and customer privacy.

The Data Security Engagement gives you the insights you need to understand data security, privacy and compliance risks in your organisation.



As your business-critical data expands and generative AI is being deployed rapidly, having an integrated approach that can help quickly identify, triage, and act on data security risks is more important than ever.

By participating in this engagement, our experts will work with you to:

1. Document your objectives and strategy around data security, privacy and compliance.
2. Show how to detect, investigate and take action on Data security and privacy risks.
3. Demonstrate ways to accelerate your compliance journey with the latest Microsoft technologies.
4. Provide actionable next steps based on your needs and objectives.

## DATA SECURITY ENGAGEMENT



Pre-engagement meeting



Data Security Check



Microsoft Purview Portfolio Overview



Recommendations and Next Steps

## THE DATA SECURITY CHECK UNCOVERS RISKS THAT MIGHT BE HARMFUL TO YOUR ORGANISATION

The Data Security Check is an integral part of the Data Security Engagement. The Data Security Check leverages Microsoft Purview tools and services in an automated process to:

- Discover data that is stored in the Microsoft 365 Cloud and analyse it for the presence of artifacts that may impose data security risks to the organisation.
- Analyse user behavior for events that impose a risk to the customers organisation. These vulnerabilities range from the loss of intellectual property to workplace harassment and more.

The Data Security Check is structured around typical Microsoft 365 services and their associated data repositories that organisations use. At its core, the Data Security Check analyses user behavior and scans data repositories related to email, collaboration, and document storage.

Optional modules can be added to extend the Data Security Check to include on-premises data repositories, Windows 10/11 endpoints and more. All activities share a common framework that will allow you to understand the risks that exist in your organisation and develop a roadmap to mitigate and protect your company's information.







Pre-engagement meeting



Data Security Check



Microsoft Purview Portfolio Overview



Recommendations and Next Steps



**Mandatory Module**

- Exchange Online
- SharePoint Online
- Teams
- Insider Risk Management

**Optional Module**

- Compliance Manager
- On-Premise Data Stores
- Windows 10/11 Endpoints
- Communication Compliance

## WHAT TO EXPECT

By the end of this engagement, experts in Microsoft compliance will provide you with:

- A Security Check report that includes findings and insights from the automated discovery process.
- A list of recommendations and actionable next steps that will help mitigate the identified risks.
- Clear look into Microsoft's approach to data security and mitigating and controlling insider risks.
- Optional Compliance Manager Tenant Assessment report with suggestions and top key improvement actions.
- Set of long-term recommendations on your compliance strategy, with key initiatives and tactical next steps.



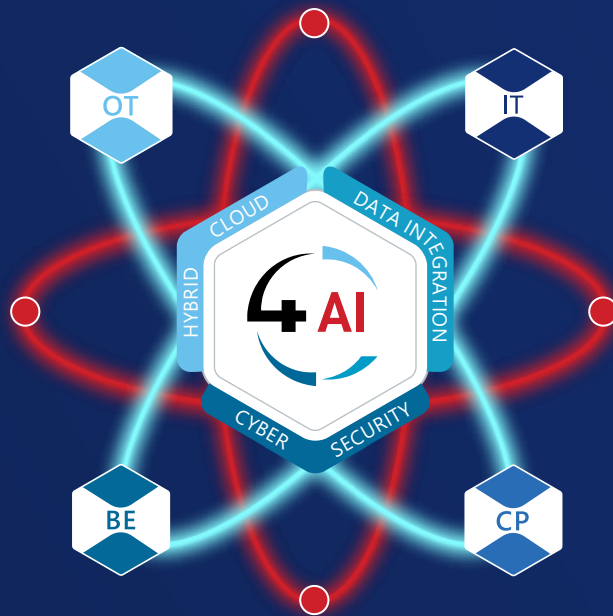


4Sight Holdings Limited (4Sight) is a public company listed on the JSE AltX (ticker: 4SI) in accordance with the laws of the Republic of South Africa. Our purpose is to leverage our extensive product and services portfolio, focused on **AI** technologies, people and data-focused solutions to design,

develop, deploy and grow solutions for our partners (customers and vendors).

The company's mission is to empower our partners to future proof their businesses through Digital **AI** Transformation to make better and more informed decisions in the modern digital economy.

4Sight's business model enables its partners to take advantage of products and solutions within its group of companies, which will allow them to enjoy turnkey Digital **AI** Transformation solutions across industry verticals.



## CONTACT US

EMAIL [sales@4sight.cloud](mailto:sales@4sight.cloud)

WEBSITE [www.4sight.cloud](http://www.4sight.cloud)

TEL +27(0) 12 640 2600

### SOUTH AFRICAN OFFICES

4Sight@Centurion  
1001 Clifton Ave,  
Lyttelton Manor,  
Centurion,  
0157

4Sight@Fourways,  
28 Roos Street,  
Fourways,  
Johannesburg  
2191

### INVESTOR RELATIONS

[investors@4sight.cloud](mailto:investors@4sight.cloud)

