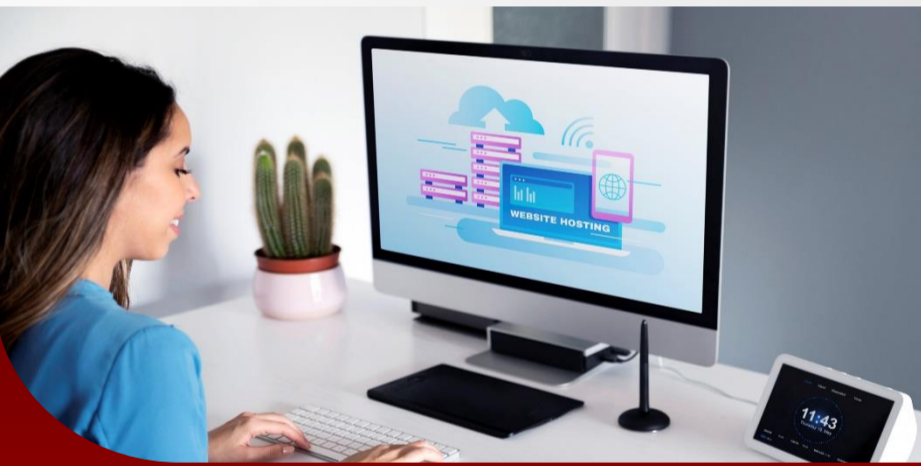


Tally to Dynamics 365 Business Central migration: 1 week assessment

Unlock the full potential of your business with Dynamics 365 Business Central by migrating seamlessly from Tally. Our Migration Assessment service ensures a smooth transition, analyzing your Tally setup, identifying potential challenges, and providing a roadmap for a successful migration to Dynamics 365 Business Central. This assessment minimizes disruption to your operations while maximizing the benefits of a modern ERP system.



Advantages:

Enhanced business operations: Transition to a more robust ERP system, improving your financial management and overall business efficiency.

Minimal disruption: Ensure a seamless transition with minimal disruption to your business operations.

Customized migration strategy: Benefit from a tailored migration plan designed to meet your specific business needs and minimize downtime.

Deliverables

- **Current state assessment report:** Detailed documentation of your current QuickBooks environment, including data structures and customizations.
- **Migration readiness report:** Analysis of your system's readiness for migration and identification of key areas needing attention.
- **Migration roadmap:** Step-by-step plan outlining the migration process, timelines, and resource requirements.
- **Cost-benefit analysis report:** Comprehensive report detailing the expected costs and benefits of the migration.
- **Risk mitigation plan:** Strategies to address potential challenges and ensure a successful migration.

Target audience

| | |
|---|--|
| Small to mid-sized enterprises | Companies currently using QuickBooks and looking to upgrade to a more robust ERP solution with Dynamics 365 Business Central. |
| Finance managers and business owners | Professionals seeking to enhance their financial management and overall business operations through a powerful ERP system. |
| IT managers | Individuals responsible for overseeing the ERP system migration and ensuring it aligns with the company's technology strategy. |