

# Agrimetrix

THE CATALYST FOR CHANGE

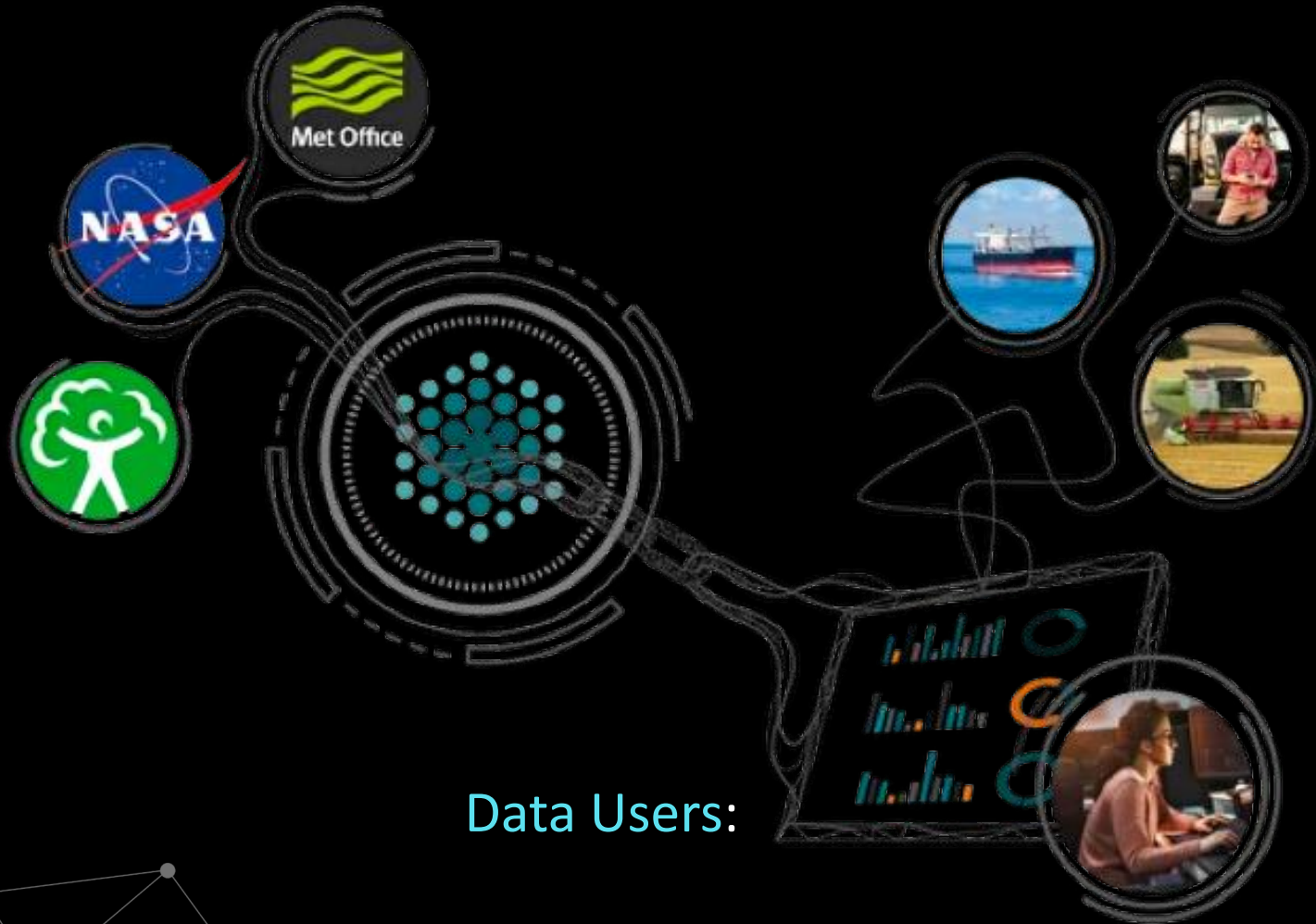
A UK public and commercially funded organization,  
founded to **accelerate new value creation from  
agri-food data**. We are strategically aiming to be  
the food and farming sector's **Data Marketplace**



**Agrimetrics**  
THE CATALYST FOR CHANGE

# Our Customers

Data Providers:



Data Users:

# Customer Pains



## Data Provider

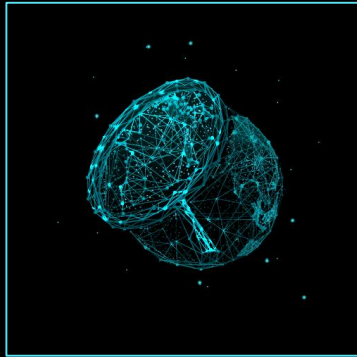
- Make my data discoverable
- Bill for my data
- Control usage
- Make my data more attractive
- Reduce my maintenance costs



## Data User

- Find data
- Find more valuable data
- Discover related, comparable data
- Easily pull data into my workflow
- Pay for just the data I need
- Learn how best to get value

# Products and Services



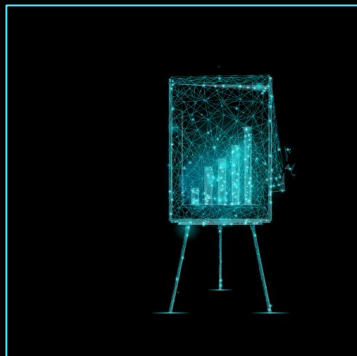
## Data

On-demand, linked data.  
Enabling you to find and get  
what you need.



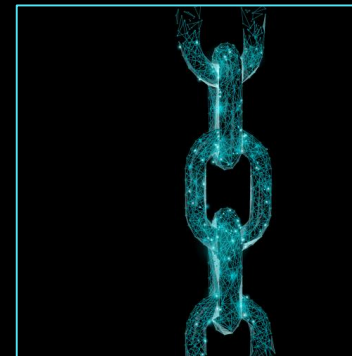
## Marketplace

For data providers to  
commercialize their data  
in the best way.



## Enablement

Where our experts enable you to  
derive value, as data consumer or  
provider.



## Platform

Enabling you and your  
ecosystem to link and  
manage data in privacy.

“

Agri-food supply chains increasingly depend on data-supply chains to function: about provenance, sustainability, welfare, carbon emissions etc..

The current data supply system needs radical improvements: siloed data, poor utilisation, unfair data exchanges, disempowered data owners.

So Agrimetrics has created a Data Marketplace, enabling organisations to share and monetise their data without losing control, while making easier and more affordable for consumers to access the information they need.

Key to this is our artificial intelligence which links concepts between data on our marketplace – enabling analysis ready sets of data, such as the set of sustainability metrics associated with a product, to be easily obtained and used.

Ultimately, our goal is to enable organisations to bring new applications and insights to market as quickly and as affordably as possible.

”



Matthew Smith,  
Chief Product Officer

# How Agrimetrics can provide you value:



As a source of data:

We have or can source datasets you need and simplify access to it.



As a mechanism for  
permissioned data  
exchanges:

Putting you and your customers in control of what data gets exchanged and on what terms.



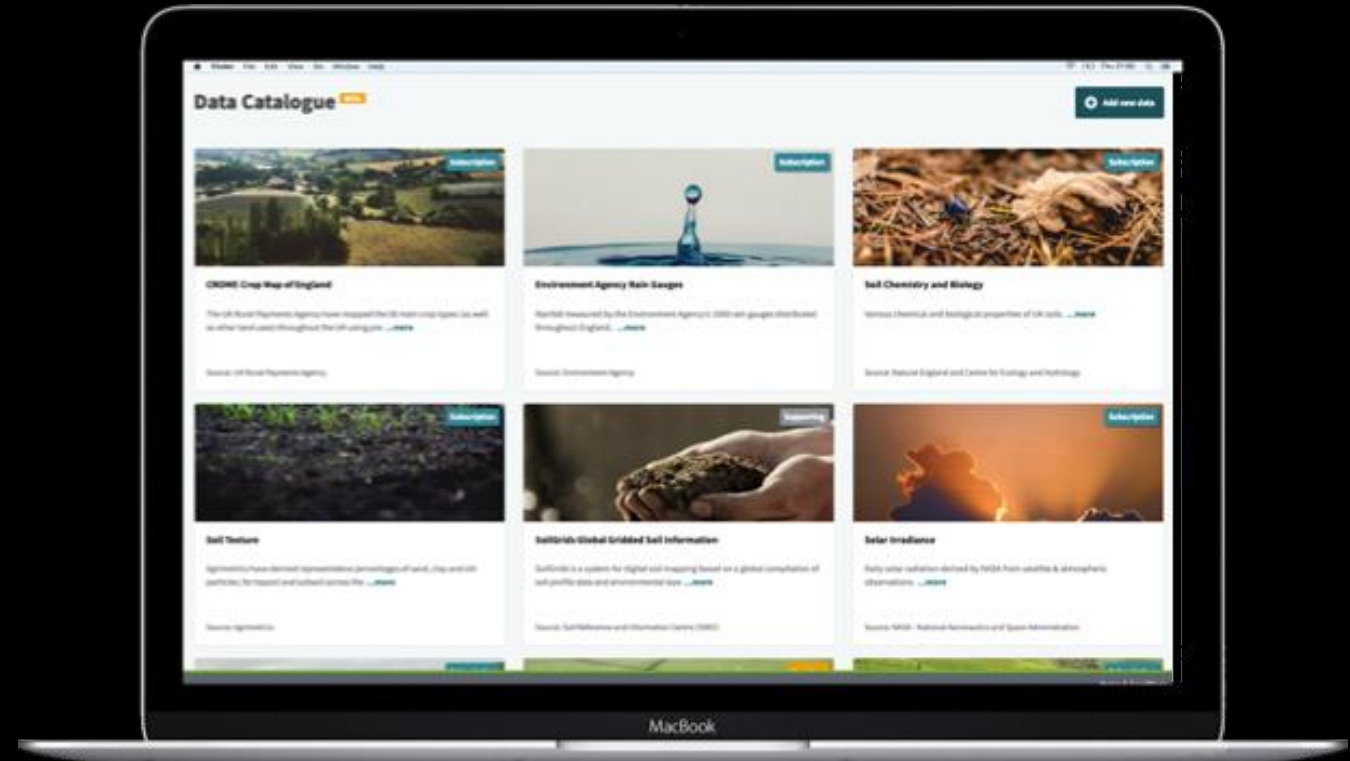
As a source of  
expertise:

Our data scientists can advise on what to collect, how to collect it, data translation and advanced analytics.



# Current Linked Datasets

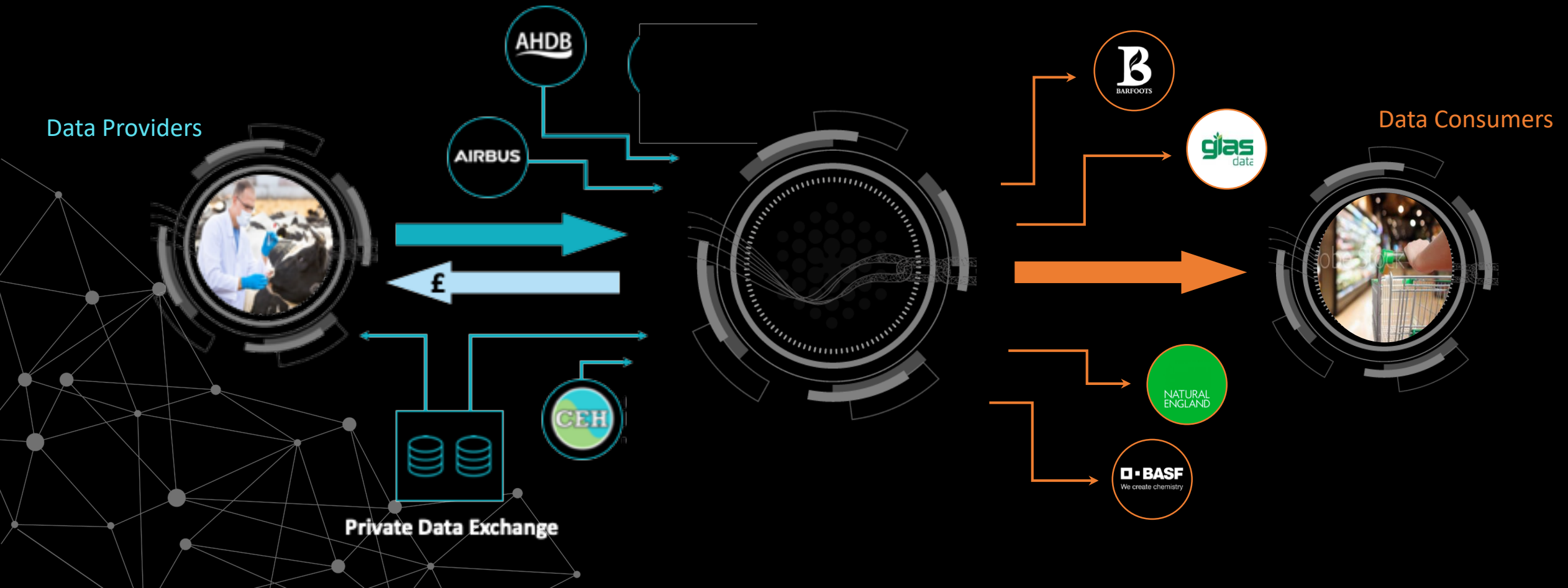
- Soil, field, crop, weather, natural capital
- Field-linked
- Premium data are satellite-derived
  - Field-attributes (e.g. chlorophyll)
  - Field boundaries
  - Reseller for Airbus EO data (cheaper!)
- Access to underlying gridded





# The Agri-Food Data Marketplace

A Platform to equitably and securely find, manage and monetise agri-food data



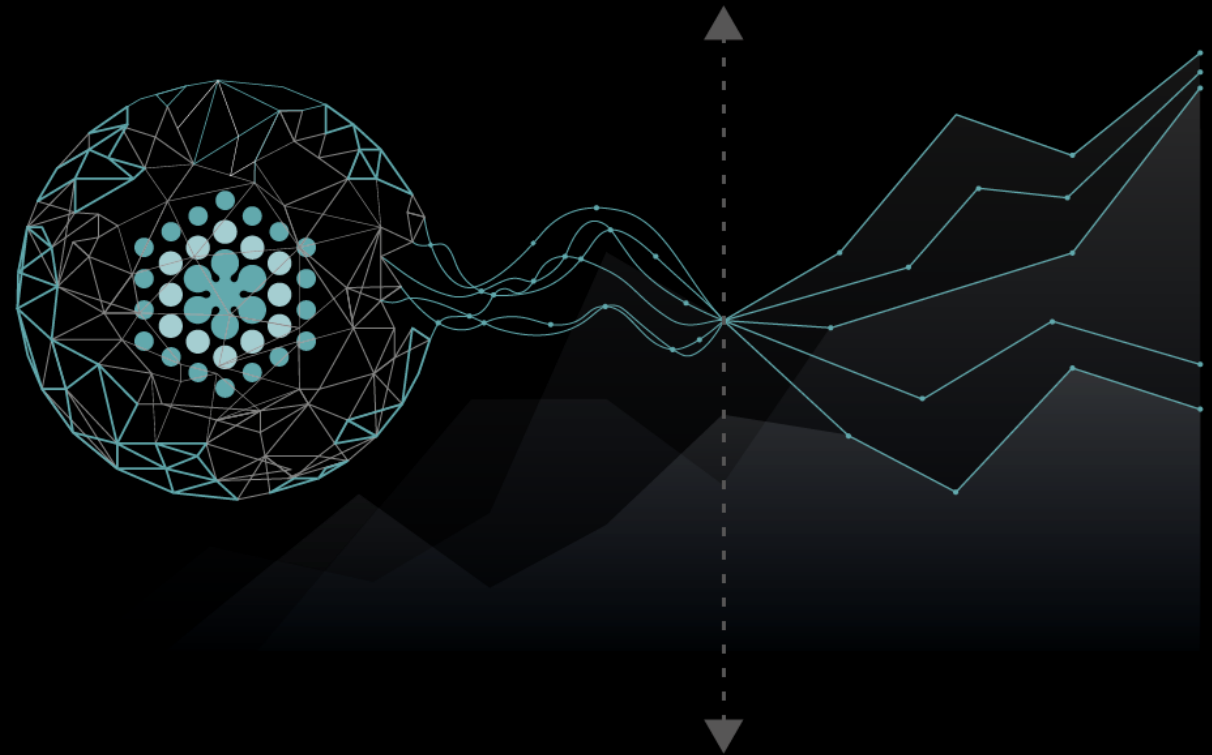
# Enablement

## How:

- Our data scientists accelerate you to actionable insights.
- They can advise on data collection protocols.
- They can help you richly describe your data to unlock more value
- They can provide advanced analytics such as AI
- Our developers can help you develop and deploy data and applications

## Example:

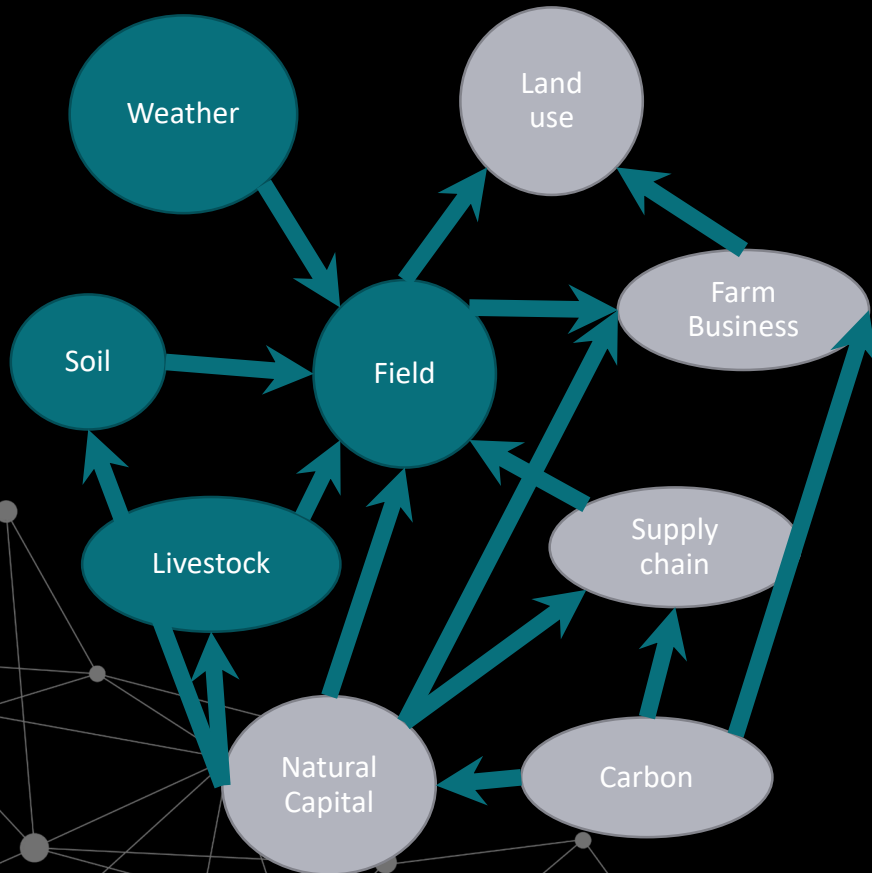
- Barfoots, an international fresh produce company
- Production forecasting for their Senegal sweetcorn production.
- Yields and crop timing could be better anticipated enabling waste reduction through anticipating production.



---

# Knowledge Graphs enable you to find the right data

---



The Agrimetrics Knowledge Graph is an interactive machine that enables data in our Data Catalogue to be discovered using natural definitions of what the data is about and how it relates to other real world concept

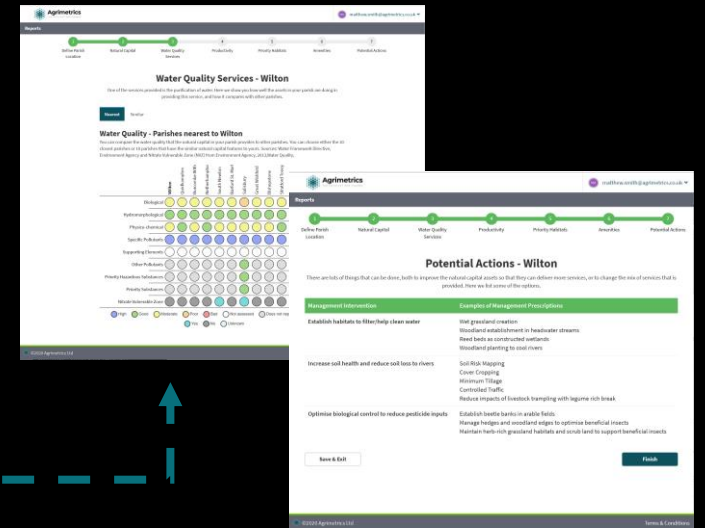
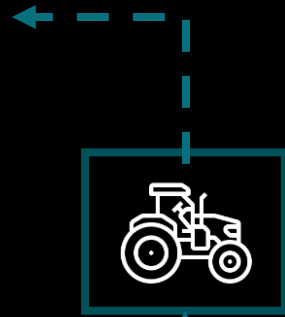
Knowledge Graph = Ontologies + computational machinery

Example: What natural capital information do you have for our primary producers?

# Recent examples applications built using our Data Marketplace

## wHen2gO

Farmer advisory for pesticides, combining data collection, field linked data, modelling and simple executable advice.



## Natural Capital Explorer

Provides improvement advice for local authorities, combining multiple UK datasets, linked to geography, such as biodiversity, water quality and population.

# The needs we address

Increasingly data-consumers need access to multiple linked data types to derive actionable insights, and data providers need help making their data accessible and relevant to users.

Finance wanting better yield estimates

Everyone, sustainability accounting

Producers supply forecasting

Insurance risk estimation

Producers wanting to market their credentials

R&D insights

Agri-tech

# Product Roadmap

Growing demand for accurate, current, linked agri-food *system* data that indicates sustainability



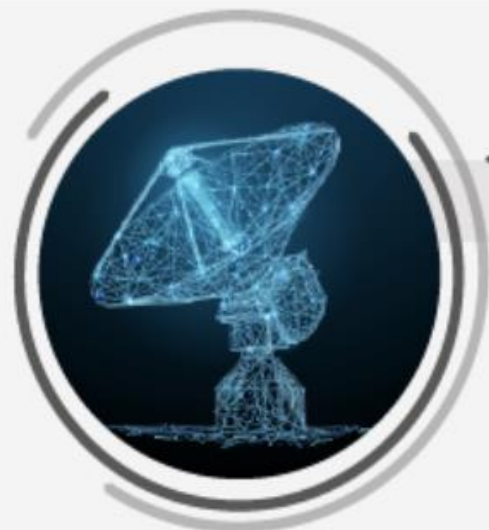
Throughout agricultural landscape

Across supply chains

Increasingly predictive

Increasing Linked Data

**Releases Spring 2020**



**Field-attributed SAR**



**Graphical Navigation**



**Linked Livestock Data**



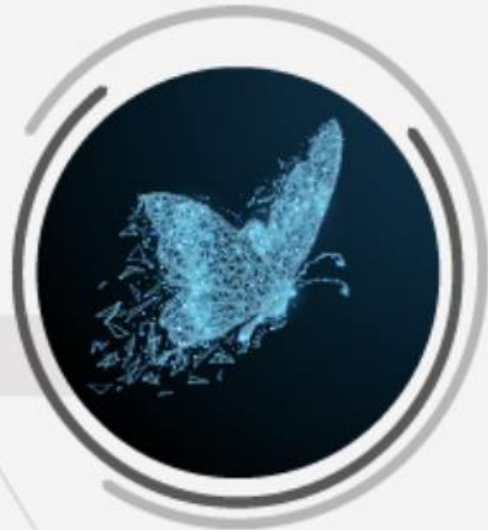
**Crop ID Prediction**





**Releases Summer 2020**

**Natural Capital Data**



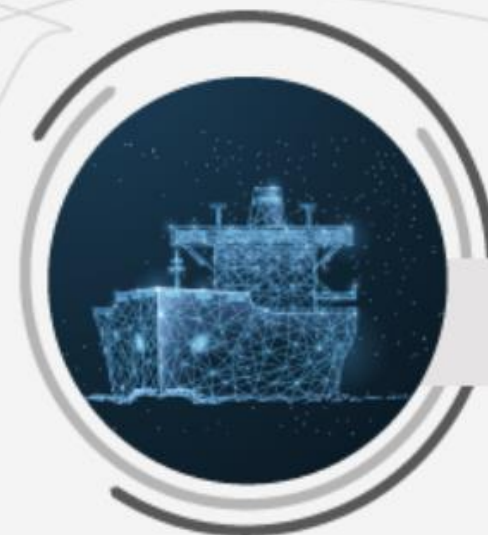
**Farmer Sentiment Data**



**Improved Data Provider Functionality**



**Linked Supply Chain, Farm and Sustainability Data**





Releases Autumn 2020

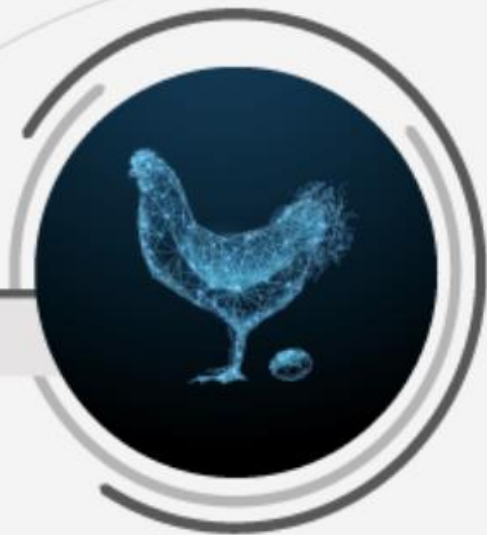
Plug & Play Sustainability Accounting (Carbon)



Land Use Data



Digital Twins



Improved functionality for data uploads and data linking

