

# The last software package you'll ever have to deploy using Intune

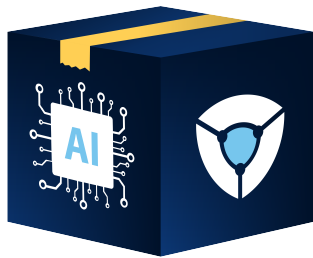


Intune + Aiden deploy intelligent software packages to all your Windows devices

Get the benefits of a hybrid environment with Intune and Aiden's automated endpoint management.

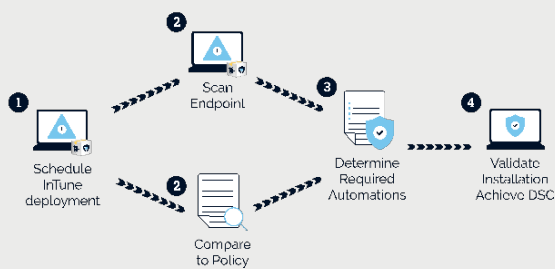
Aiden is a custom application packaging service that uses an AI bot to scale endpoint management across customers, efficiently handling Windows and software deployments and patch management.

## Why Aiden + Intune Works Better



- ✓ **Simple Transitions** – Don't worry about recreating deployments and packages. We provide a simple way to manage your environment moving forward, whether you're coming from Intune or any other deployment tool.
- ✓ **Effortless OS Deployments** – With our OS deployments, you can effortlessly migrate to a new Windows OS or rebuild with a clean OS reinstallation.
- ✓ **Consolidated Reboots** – Consolidate and schedule reboots to improve the employee experience and boost productivity.
- ✓ **Packaged BIOS/Firmware Updates** – Easily install the recommended driver, BIOS, and firmware updates using AidenBot.

## Deploying Aiden with Intune



- 1 Schedule AidenBot to deploy in Intune.
- 2 AidenBot gets deployed by Intune and uses Intune's agent to scan every endpoint and compare it with your desired state policy file.
- 3 AidenBot creates a task sequence to bring all endpoints into compliance with your policy file.
- 4 AidenBot executes the task sequence to bring each endpoint into compliance with your policy file and reports to AidenVision and Intune on the state of each machine.

## Aiden + Intune = Massive Benefits

95%

Reduction in time spent deploying computers

75%

Fewer IT support ticket

97%

Reduction in vulnerabilities

## Meet Aiden



### AidenBot

The last software package you'll ever have to deploy using Intune

AidenBot leverages Intune's agent to scan each endpoint and then delivers intelligent software packages from AidenCore to your Windows devices.

Just schedule Intune to deploy AidenBot and track in AidenVision how your Windows computers are automatically kept up to date and in compliance with your security policy.



### AidenVision™

Our policy-based reporting dashboard

AidenVision revolutionizes Windows device management by ensuring compliance with company policies through near real-time monitoring, advanced visualizations, and recommendations.



### AidenLabs

Our team of automation experts

We work with you to tackle your toughest software packaging challenges and keep your policies clear and current. We also manage custom software updates, ensuring your Windows environment remains secure.



### AidenCore

Our trusted library of intelligent software packages

AidenCore consists of over 2,200 trusted, intelligent software packages for Windows applications, meaning you'll never have to worry about another software patch again.

## Frequently Asked Questions

- ?** **Does Aiden replace Intune?** No. Aiden is not a replacement for Microsoft Intune. Microsoft Intune's agent deploys AidenBot to your computers and automates the installation and maintenance of your desired end-state configuration for the lifecycle of your machines.
- ?** **How does Aiden improve the Intune experience?** When you add Aiden to Intune, you no longer have to create application packages, create dependency chains to control the order of installation, update application packages and their detection rules every time an update is available, or create custom reports to show the detailed status of endpoint and package compliance.
- ?** **Can Aiden report on machines not connecting to Intune?** Yes, AidenBot can install itself on endpoints and create a scheduled task to scan and report compliance status to AidenVision once a day and shortly after each reboot. This provides visibility of endpoints with failing endpoint management agents.



# 2,200+

Common business applications are already packaged and ready to deploy... and growing every day

## SEE WHAT AIDEN FOR INTUNE CAN DO FOR YOU.

[Schedule Your Intro Call](#)