

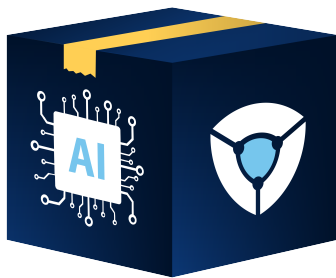
The last software package you'll ever have to deploy using SCCM



Deploy Aiden with SCCM to automate Windows endpoint management

No more complex scripting, targeting, or sequencing. Schedule Microsoft Configuration Manager (formerly known as SCCM) to deploy AidenBot, and we'll take care of the rest.

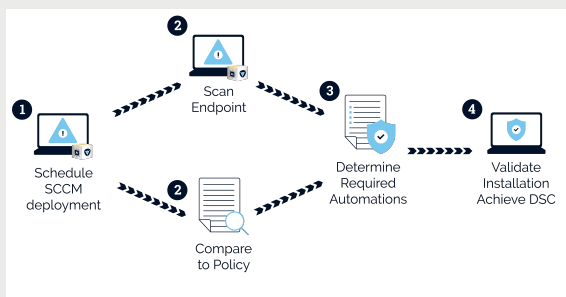
Aiden is a custom application packaging service that uses an AI bot to scale endpoint management across customers, efficiently handling Windows and software deployments and patch management.



Why Aiden + SCCM Works Better

- ✓ **Effortless OS Deployments** – No longer a need to maintain a standard image.
- ✓ **Consolidated Reboots** – Consolidate and schedule reboots to improve the employee experience and boost productivity.
- ✓ **Packaged BIOS/firmware updates** – Install recommended driver, BIOS, and firmware updates easily using AidenBot.
- ✓ **Timely & Accurate Reporting** – Understand at-a-glance how the current state of your environment compares to the desired state policy.

Deploying Aiden with SCCM



- 1 Schedule AidenBot to deploy in SCCM.
- 2 AidenBot gets deployed by SCCM's agent and simultaneously scans every endpoint and compares it with your policy file.
- 3 AidenBot creates a task sequence to bring all endpoints into compliance with your policy file.
- 4 AidenBot executes the task sequence to bring each endpoint into compliance with your policy file and reports to AidenVision and SCCM on the state of each machine.

Aiden + SCCM = Massive Benefits

95%

Reduction in time spent
deploying computers

75%

Fewer IT
support ticket

97%

Reduction in
vulnerabilities

Meet Aiden



AidenBot

The last software package you'll ever have to deploy using SCCM

AidenBot leverages SCCM's agent to scan each endpoint and then delivers intelligent software packages from AidenCore to your Windows devices.

Just schedule SCCM to deploy AidenBot and track in AidenVision how your Windows computers are automatically kept up to date and in compliance with your security policy.



AidenVision™

Our policy-based reporting dashboard

AidenVision revolutionizes Windows device management by ensuring compliance with company policies through near real-time monitoring, advanced visualizations, and recommendations.



AidenLabs

Our team of automation experts

We work with you to tackle your toughest software challenges and keep your policies clear and current. We also manage custom software updates, ensuring your Windows environment remains secure.



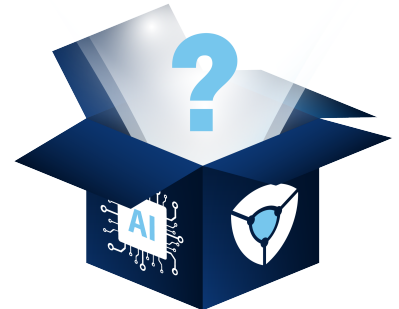
AidenCore

Our trusted library of intelligent software packages

AidenCore consists of over 2,200 trusted, intelligent software packages for Windows applications, meaning you'll never have to worry about another software patch again.

Frequently Asked Questions

- ? Does Aiden replace SCCM?** No. Aiden is not a replacement for SCCM. SCCM's agent deploys AidenBot to your computers and automates the installation and maintenance of your desired end-state configuration for the life-cycle of your machines.
- ? Is Aiden an agent?** No. Aiden is not an agent. It is deployed by SCCM and uses the elevated security token of SCCM to execute everything it needs. When Aiden is finished, it leaves the machine and uninstalls itself.
- ? Can Aiden report on machines not connecting to SCCM?** Yes, AidenBot can install itself on endpoints and create a scheduled task to scan and report compliance status to AidenVision once a day and shortly after each reboot. This provides visibility of endpoints with failing endpoint management agents.



2,200+

Common business applications are already packaged and ready to deploy... and growing every day

SEE WHAT AIDEN FOR SCCM CAN DO FOR YOU.

[Schedule Your Intro Call](#)