

AI DATA OPTIMIZATION AND AI MODEL ENHANCEMENT SOLUTIONS

# AIMMO Credential 2024

AIMMO Leads innovation in Vision AI for autonomous driving and DX industries by focusing on data, the foundation of AI technology





## Company Information

<b>Company Name</b>	AIMMO Co., Ltd.
<b>Date Of Establishment</b>	April 22, 2016
<b>CEO</b>	Oh Seung-Taek
<b>Business Registration Number</b>	307-87-00367
<b>Corporate Registration Number</b>	110111-6004529
<b>Standard Industrial Classification</b>	Primary Business : Development and Supply of Application Software Secondary Business : Database and Online Information Service
<b>Headquarters</b>	7F, 41, Beolmal-ro 50beon-gil, Bundang-gu, Seongnam-si, Gyeonggi-do, Republic of Korea
<b>Business Areas</b>	AI Data Platform Autonomous Driving and Smart City AI Solution Service
<b>Capital</b>	1.1M USD (as of 2023)
<b>Website</b>	<a href="https://www.aimmo.ai">https://www.aimmo.ai</a>
<b>Contact Information</b>	Tel. 031-707-3540 / Fex. 031-705-3530

## Oversea Subsidiaries

<b>United States</b>	<b>Est. 2023</b>	AIMMO NA, INC.	California	Local autonomous market entry
<b>Germany</b>	<b>Est. 2023</b>	AIMMO Germany GmbH	Düsseldorf	Local DX market exploration
<b>Canada</b>	<b>Est. 2022</b>	AIMMO CA INC.	Ontario	Local clients & project management
<b>U.K</b>	<b>Est. 2021</b>	AIMMO UK LTD	London	Local clients & project management
<b>Vietnam</b>	<b>Est. 2020</b>	AIMMO VN., LTD	Hanoi	Offshore Data Factory

## AIMMO has achieved the following results by providing 5 solutions

- |  |  |  |
|--|--|--|
| <p><b>2016</b> Mar. 'Blue Whale Corp' is established<br/>Jul. Affiliated research institute is registered</p> <p><b>2018</b> Jul. The processing service, 'AIMMO GTaaS', is introduced<br/>Oct. The data platform, 'AIMMO', is introduced</p> <p><b>2019</b> May. Selected as a supplier in the data voucher support project by the Korea Data Agency<br/>Selected as a resident company for autonomous driving in Pangyo Zero City<br/>Jun. <b>Recipient of award in the data voucher support project</b><br/>Sep. Company name is changed to 'AIMMO Corp.'</p> | <p><b>2020</b> Feb. Vietnam branch established in Hanoi<br/>Mar. Canadian branch established in Toronto<br/>Aug 'AIMMO Enterprise' beta version is introduced<br/>Oct. Entrance to Japanese Market with AOS Data<br/>Dec. <b>Received the grand award from the National Information Society Agency (NIA) for "Fourth Industrial Revolution Agency Chief"</b></p> <p><b>2021</b> Feb. Registered as Microsoft Azure ISV<br/>Jul. Selected as 'Hero IR Day' and Received an award by Shinhan Square bridge<br/>Aug. UK branch is established in MIRA Technology Park<br/>Dec. <b>Selected as a Global Entrepreneur Program(GEP) supported by Ministry of International Trade of UK</b></p> | <p><b>2022</b> Jan. <b>Secured 12MN USD for Series A funding</b></p> <p><b>2023</b> Jan. <b>Unveiled AIMMO AD-DaaS Service (Autonomous driving AI Model) Continuously selected as a providing corporation in the data voucher support project for 5 years</b><br/>Aug. US branch is established in California<br/>Secured 15M USD for Series B funding<br/>Sep. German branch is established in Dusseldorf</p> <p><b>2024</b> Jan. <b>Hosted 'AIMMO AI Tech Summit' During CES 2024 Unveiled new product '4Core'</b><br/>Mar. Selected in 'AI 50' list by Forbes Korea 2024<br/>May. <b>Passed Technology Assessment for Special listing of technology companies</b></p> |
|--|--|--|

AIMMO produces high-quality training data to support technical growth and business expansion through AI

**NO.1**

In possession of skilled labelers and an advanced annotation platform in Korea

**15M** USD

Expected Total Sales Revenue in 2024 (approx. 40% of total revenue from oversea projects)

**+60%**

More than 60% of the total staff of 148 employees are ML Engineers, Data Scientists, and Software Engineers

**200+**

Experience with 200+ global and domestic partners with various data types

**40,000+**

Holding approx. 40,000 data workers (internal professional labelers & crowd workers)

**2B+**

Experience in cumulative production more than 2 billion AI data instances

AIMMO is expanding our business operations and enhancing technological capabilities through domains and global branches, including the developing production infrastructure.

**North America**

미국법인 설립  
자율주행 AI 업체 연계  
자율주행 시장 진출

**Europe**

영국 및 독일 법인 설립  
유럽 자율주행 시장 진출

**Vietnam**

데이터 팩토리 운영(원가 절감 가능)

**Republic of Korea**

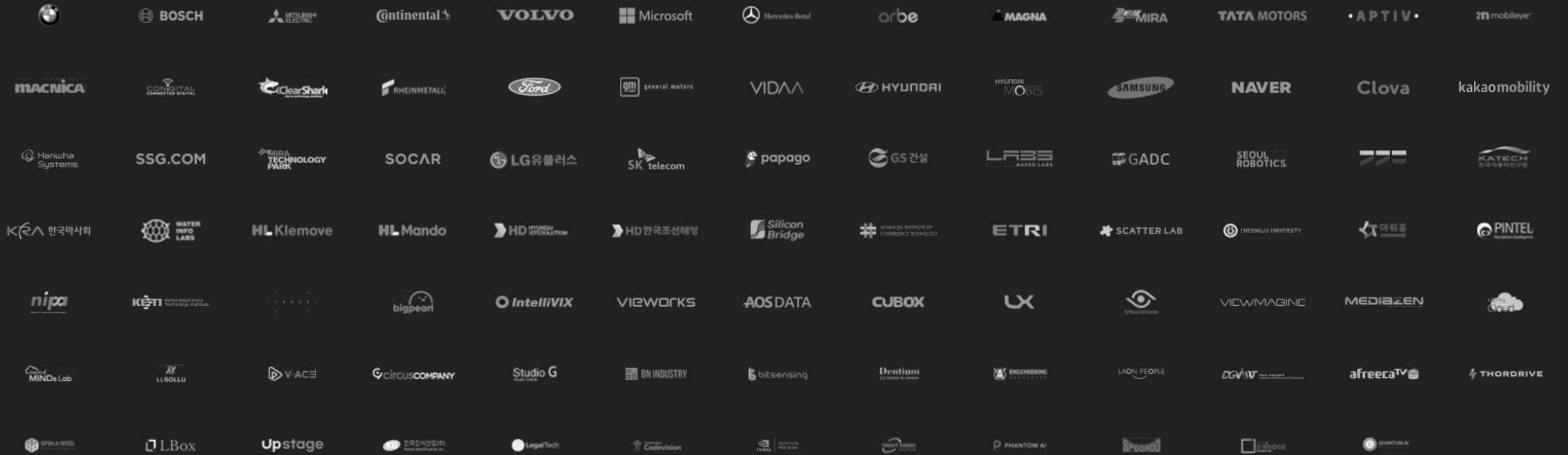
200+개 고객사

**Japan**

일본법인 설립  
현지 에이전시



We are always enhancing our platform and accumulating know-how through project performance, which involves raw data collection as well as processing for more than 200 clients and various types of data, including images, videos, voices, LiDAR, etc.



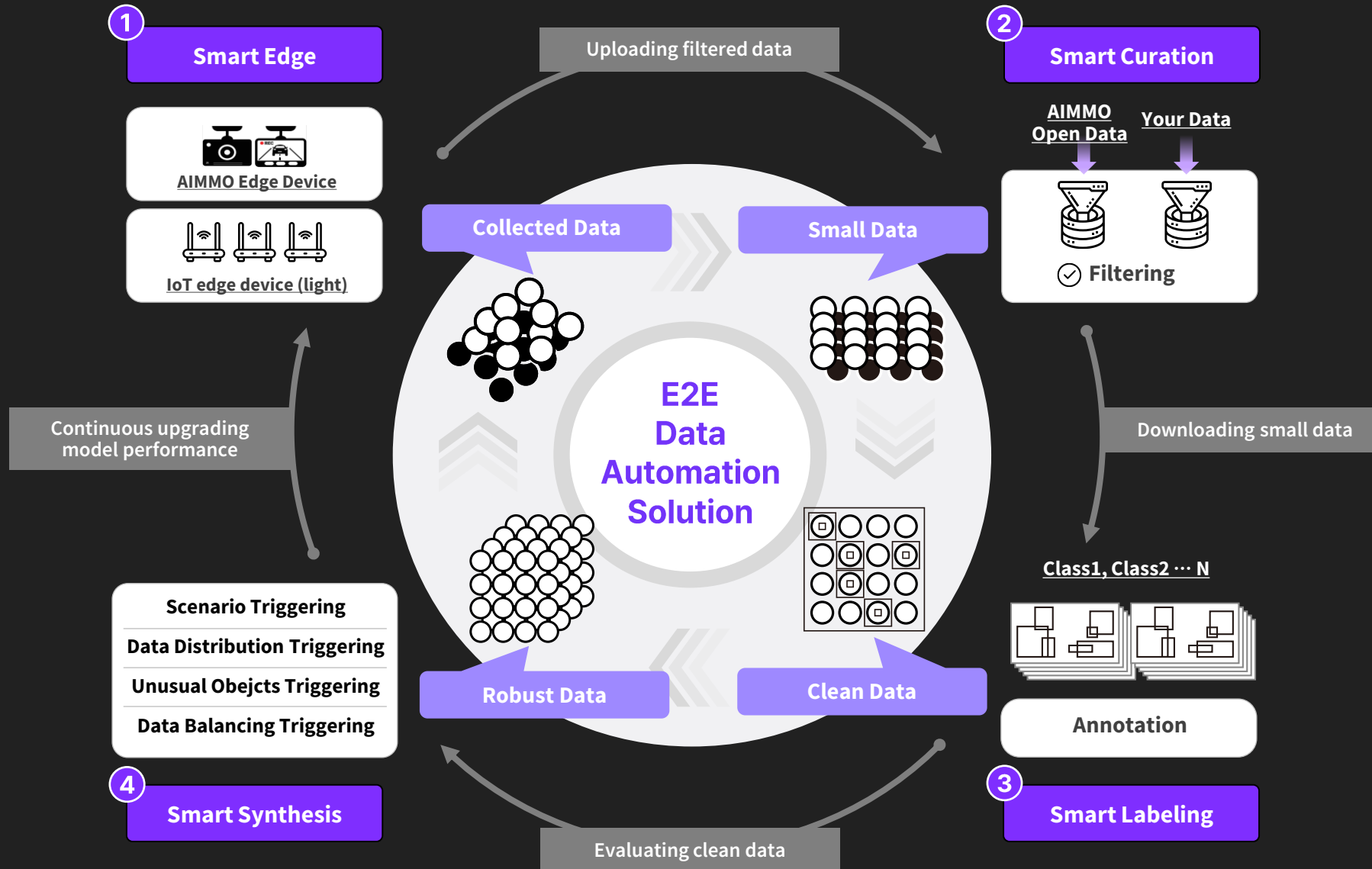
# 01 AIMMO Core

Enhance your AI's performance with optimized small-scale data by 'AIMMO Core'

Enabling a data-powered tomorrow



AIMMO provides optimized solution by packaging its business model into a cycle of 4 cores that fulfill customers' need

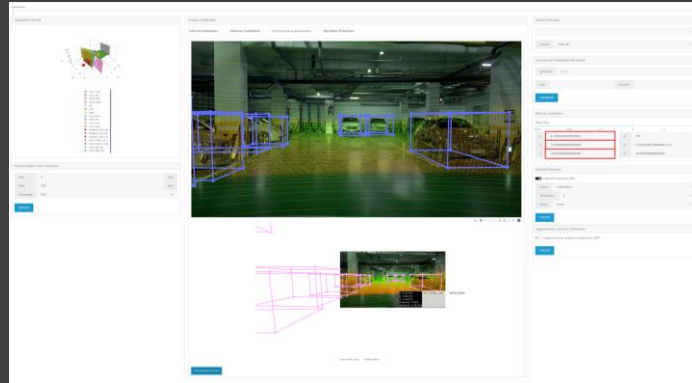




# A product equipped with an AI model interfaced with heterogeneous vision sensors on Edge Devices, capable of real-time triggering of data that satisfies ODD (Operation Domain Design)

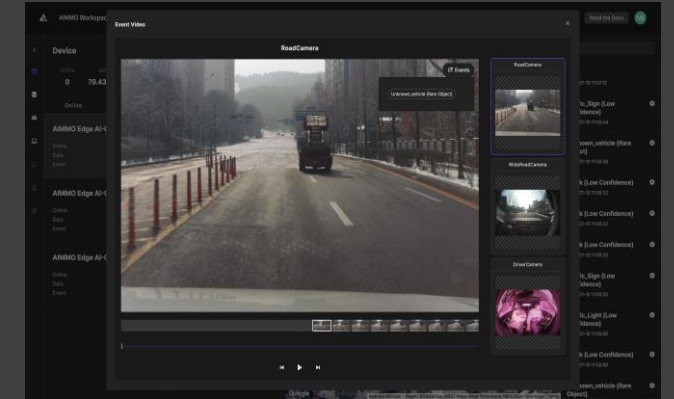
## Sensor Calibration

Curating the specifications, quantity, mounting position, and angles of sensors for data collecting as well as implementing interface between multiple sensors and synchronizing software, managing overall sensor operation and converting multisensory outputs to a standard coordinate system.



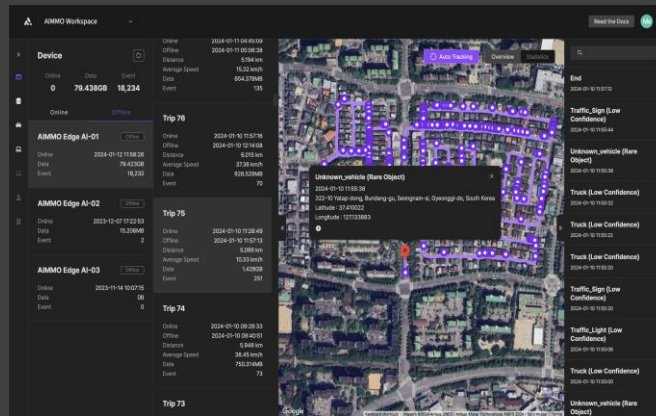
## ODD Triggering

When systems detect specific objects or when certain data conditions are fulfilled, it executes triggers to initiate desired actions and processes, thereby collecting data.



## Data Collection

Using Edge-devices to collect data at preset time and environments, processing it locally, and then effectively utilizing communication bandwidth to transfer data quickly and securely to the main system



## De-identification

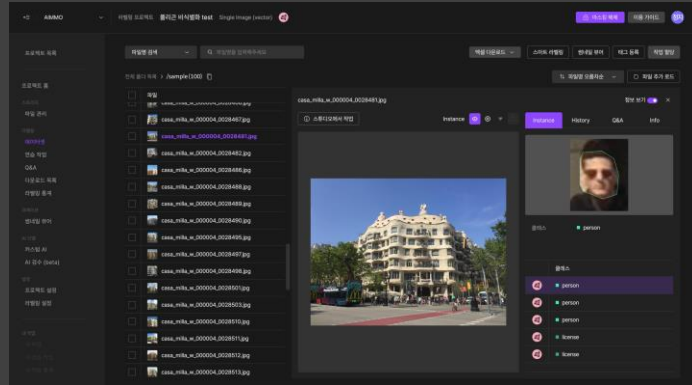
After data is collected from Edge-device, it is processed locally to remove identifiable information or convert it into a form that is difficult to identify before transmitting the de-identified data in real-time



# Extract ODD-based metadata and classify similar images to curate edge case data. Curate data with a valid composition data ratio for AI model training

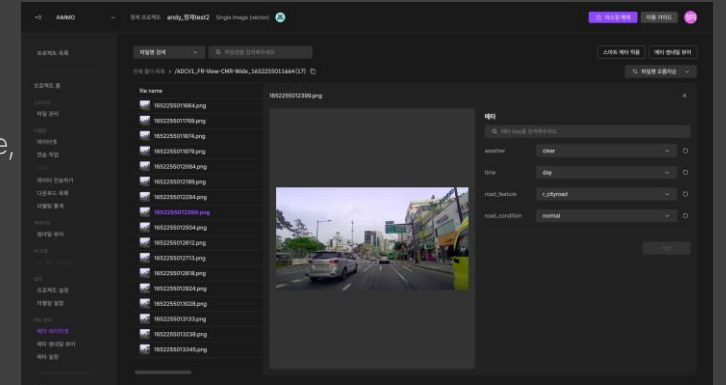
## De-identification

Among data that already includes personal information, recognizing objects that requires de-identification and converting them into a form that is difficult to identify



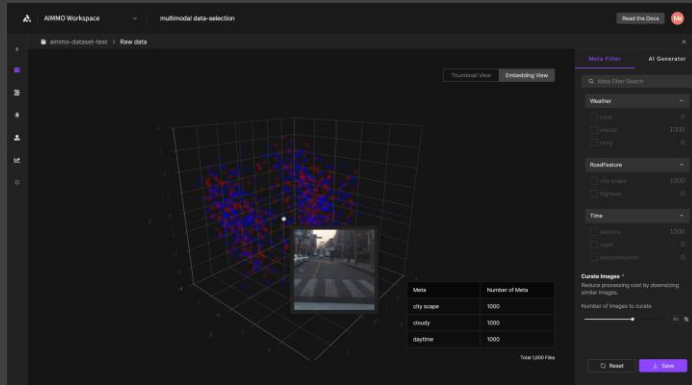
## Metadata Inference

Utilizing Vision AI models to infer various metadata, including information about objects in image, as well as environment, camera information and circumstances at the time of capture



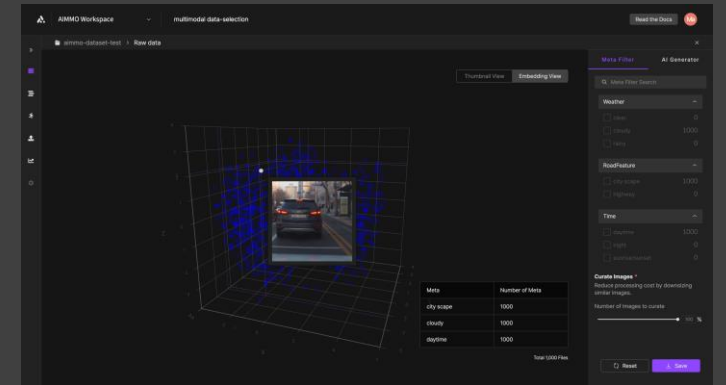
## Vector Embedding

After mapping data in virtual space, select representative data or curate edge case data to effectively train the AI model, as well as generate datasets to improve the model's robustness and assess its limitation



## Data Balancing

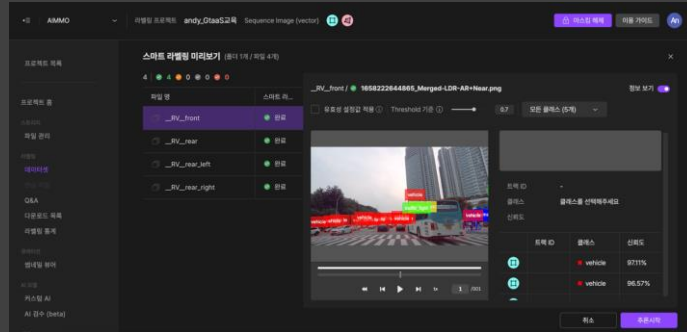
Collecting data samples that represents the entire dataset and cover edge cases, then analyzing these samples to curate the minimum effective data for AI model training, as well as constructing balanced learning, validation, and test datasets to control issues such as overfitting and improve training efficiency



# Extract ODD-based metadata and classify similar images to curate edge case data. Curate data with a valid composition data ratio for AI model training

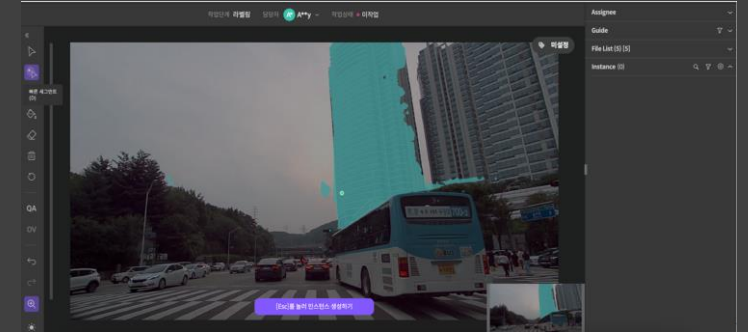
## Auto Labeling

Based on open datasets and pretrained models, objects are detected without human intervention through additional training using customer data, resulting in minimal human labeling work and improved efficiency



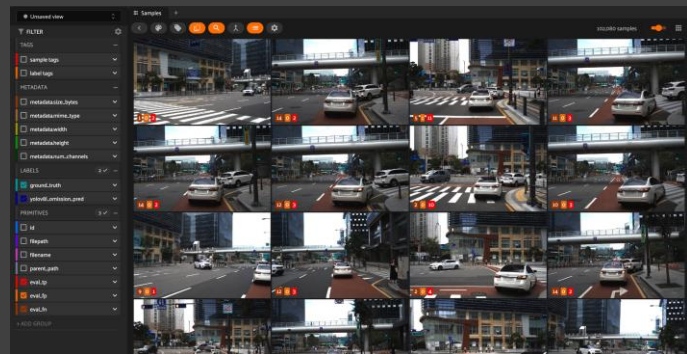
## Interactive AI

Support accurate labeling in real-time with the assistance of AI Models for tasks that typically require long working terms



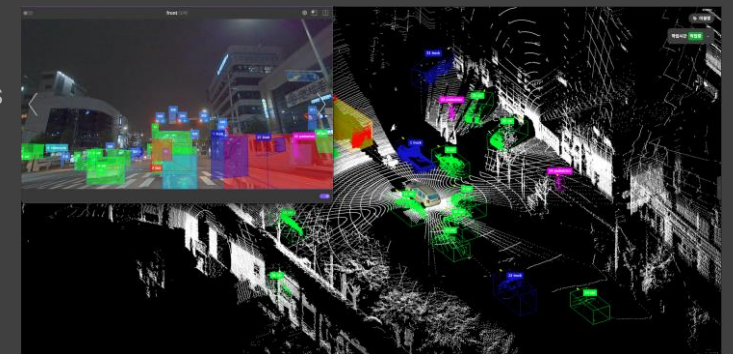
## AI-SQIP

Detect errors in labeled results and automate the labeling inspection process through AI, thereby improving the productivity of data verification

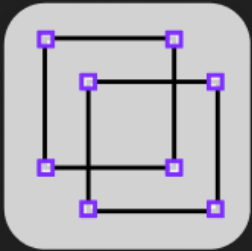


## Sensor Fusion

Combining data collected from various types of sensors provides higher accuracy and reliability, surpassing sing-sensor usage through better information



Improving task efficiency using a variety of labeling and smart labeling technology, including easy customization using our own annotation tool.



Bounding Box



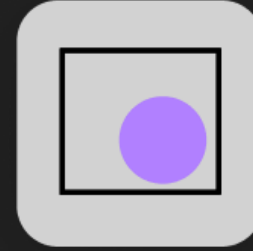
OCR  
(Text Recognition)



2D Cuboid



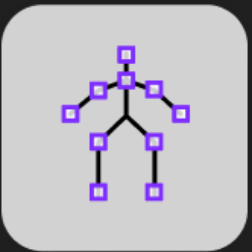
Voice Recognition



Polygon



Sensor Fusion  
Segmentation



Keypoint



Polyline



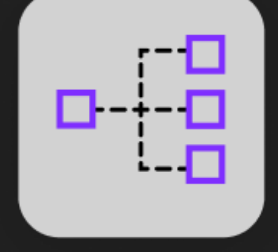
3D Cuboid



Video Classification



Sensor Fusion Cuboid

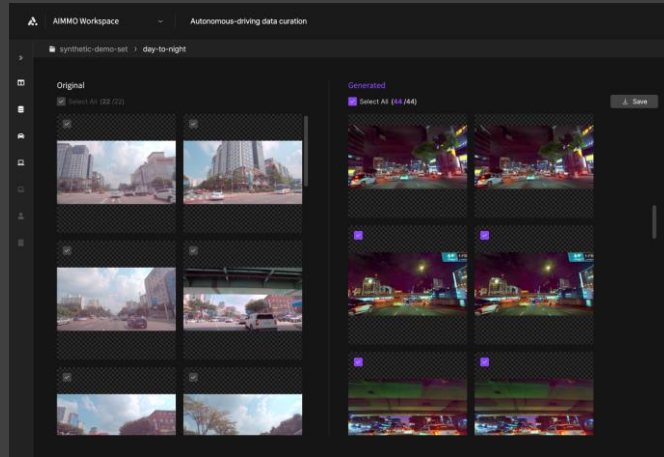


Classification

Complementing real data through augmentation of existing data or generation synthetic data further enhances AI model performance. Our in-house tool, Smart Synthesis, generates synthetic data using Generative Models and Simulation techniques, either independently or in combination, depending on the specific purpose.

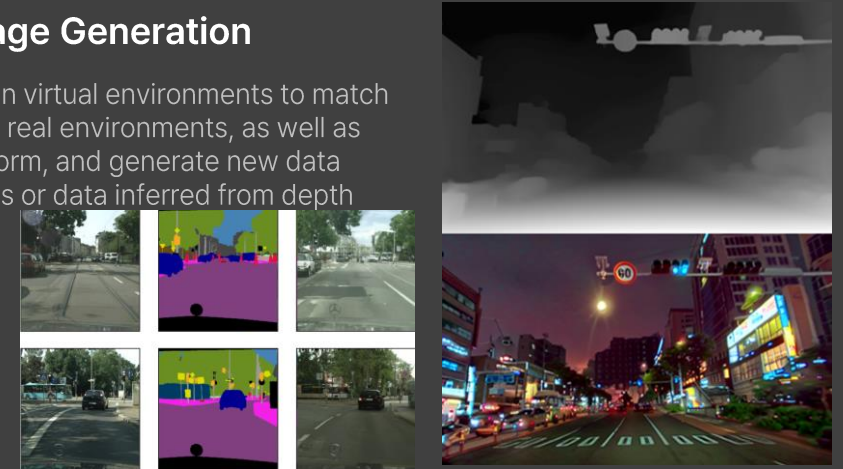
### Meta Converter

Generate data for virtual environments by modeling knowledge gained from learning diverse real-world components, including static backgrounds, vehicles, pedestrians, and buildings



### Conditioned Image Generation

Apply data generated in virtual environments to match the spatial structure of real environments, as well as predict, modify, transform, and generate new data based on actual images or data inferred from depth sensors



### Object Modifier

Generate virtual situations by modifying or manipulating objects' characteristics or behaviors within a given environment, aiming to improve object-specific learning or enhance task-specific performance

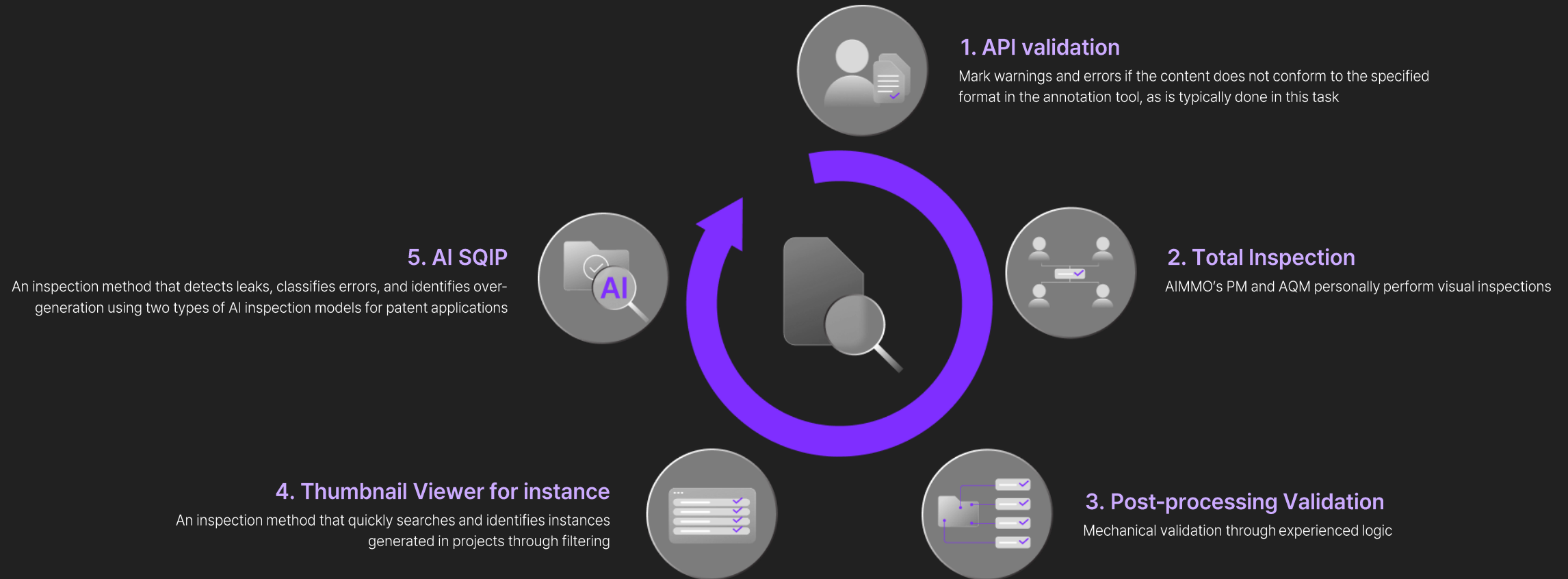


### Video Synthesis

Utilize deep learning to synthesize videos with realistic continuity based on given image or video data



# To keep 99.8% accuracy of AI data quality, we follow our patent-pending 5-step inspection process



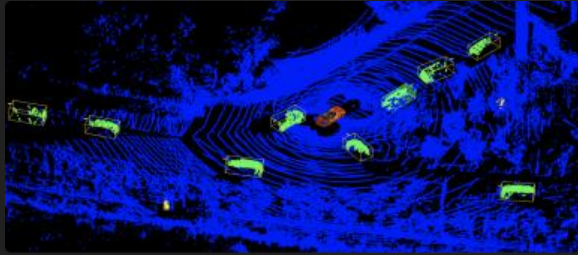
# 02 AIMMO Domain Solutions

From start to finish: A comprehensive, customized domain solution  
Delivering optimized data for high-performance AI development,  
tailored to industry-specific needs with expert precision

Enabling a data-powered tomorrow



AIMMO Core-based solutions offer specialized services tailored to each domain and industry characteristics, ensuring specialized and customized solutions. Leveraging our high level of expertise, AIMMO provides domain-specific AI solutions for various Industrial DX (Digital Transformation) applications, including AD-Core, a Vision AI solution for autonomous driving, and SC-Core, a Vision AI solution optimized for smart cities.



### Autonomous Driving

# LiDARs & Sensor fusion  
From data collection to specialized PCD labeling for autonomous driving models



### Smart Factory

Solutions and Edge AI development for increasing production and reducing defective products



### Drone/Defense

# Bounding box  
Crafting datasets for training model for drones, Data processing for autonomous flight technology system development



### Finance

By significantly reducing financial incidents through AI-powered detection technology, enhancing customer trust and improving customer experience.



### Medical

# Keypoint  
Conducting medical data labeling of X-ray, CT and MRI for AI based diagnostic solution development



### Security/Monitoring

Collecting and processing video data for real-time hazard detection and accident prevention



### Agricultural Products

# Segmentation  
Enhancing crop resilience and increasing yield by using advanced AI-based predictive analytics to accurately forecast weather patterns



### Distribution / Logistics

To ensure transportation stability and economic feasibility, introducing systems for automatic pricing and safety management.



AIMMO has data collection vehicles for autonomous driving, equipped with 10 cameras and 7 LiDARs, as well as an GNSS/INS system that can measure inertia, including absolute position value and acceleration.



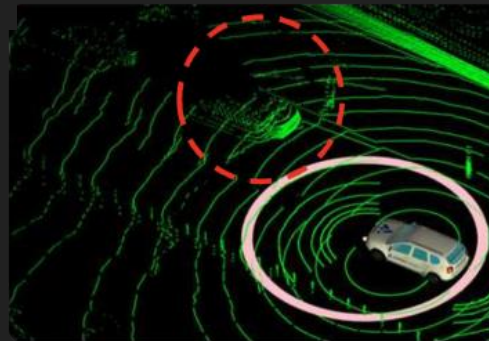
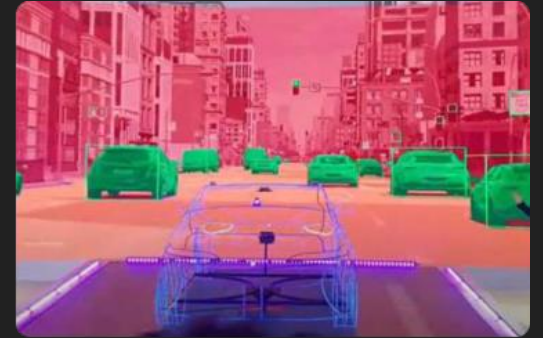
AIMMO's data collection Vehicle for autonomous driving

»  
Data Collection



Camera Image

»  
Data Processing

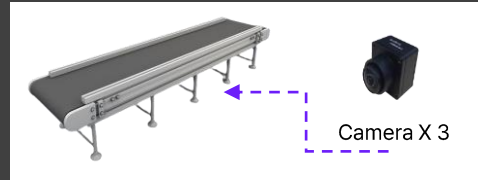


LiDAR Data

Installing AIMMO Edge device on the conveyor allows one to collect data and enhance AI models to detect defective products easily and accurately .

**1. Data Collection**

Gathering image data of welds from cameras mounted on conveyor belts for detailed analysis

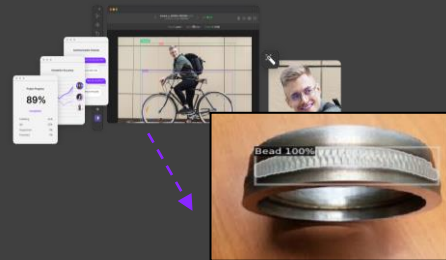


+

**2. DataOps Platform**

Three tasks are executed using AI on our self-developed DataOps platform

- ① Data Curation
- ② Data Annotation
- ③ Data Inspection



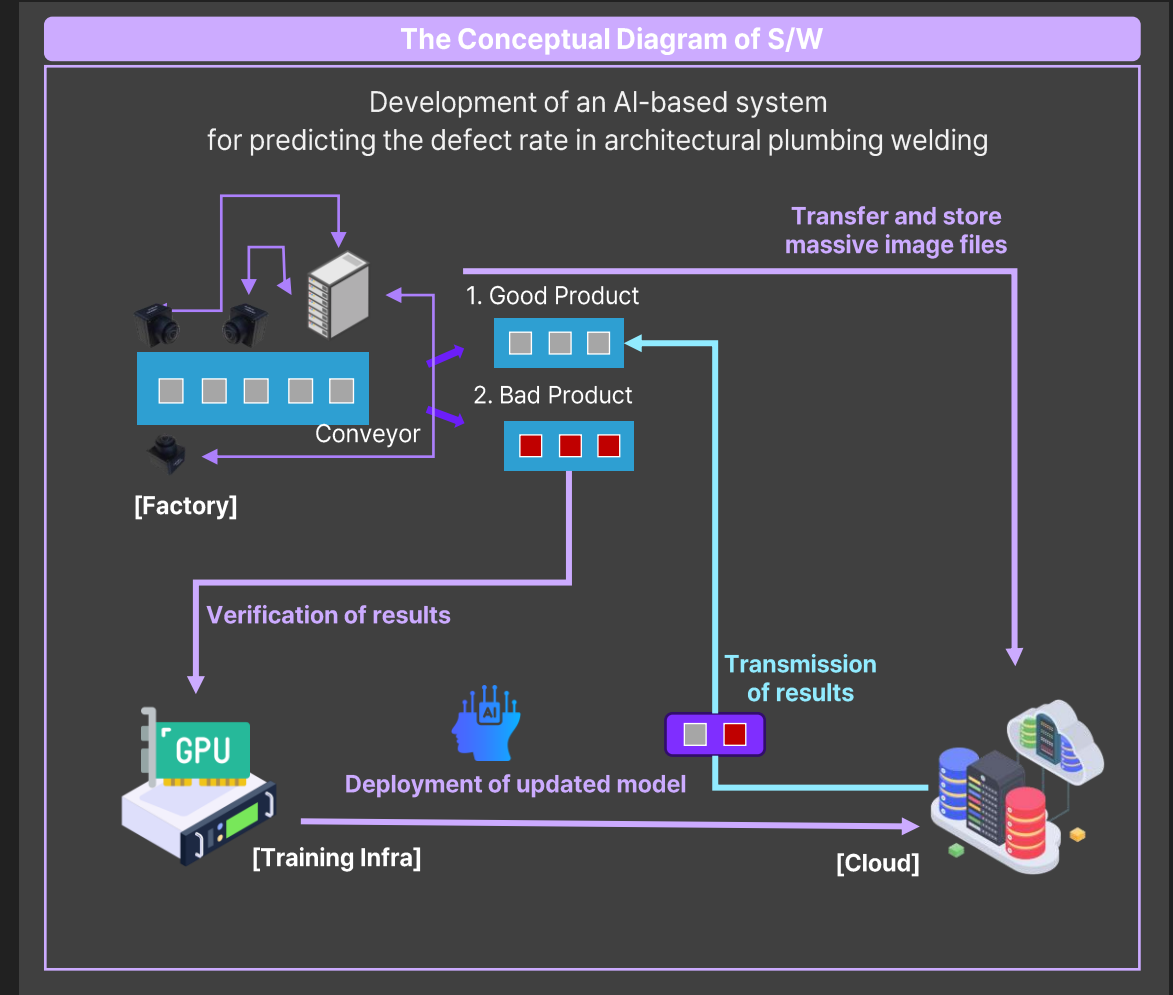
+

**3. AI Modeling**

Development of an AI-driven welding evaluation model for semiconductor plant facilities, integrated with cloud server connectivity and edge device computing capabilities



[System Integration]



# AIMMO Smart Air Mobility Solution

Naval ship

Maintenance issues

Solution



Welding	Painting
Weld Cracking	Corrosion
Porosity	Blistering
Undercutting	Chalking
Distortion	Peeling

Case#1

Install cameras under gantry crane

side view top view side view

Case#2

Install gimbal cameras on the drone

top & side view

Case#3

Install cameras at the dock side

entire view

Detected by human eye

AI Model(by AIMMO)

Application

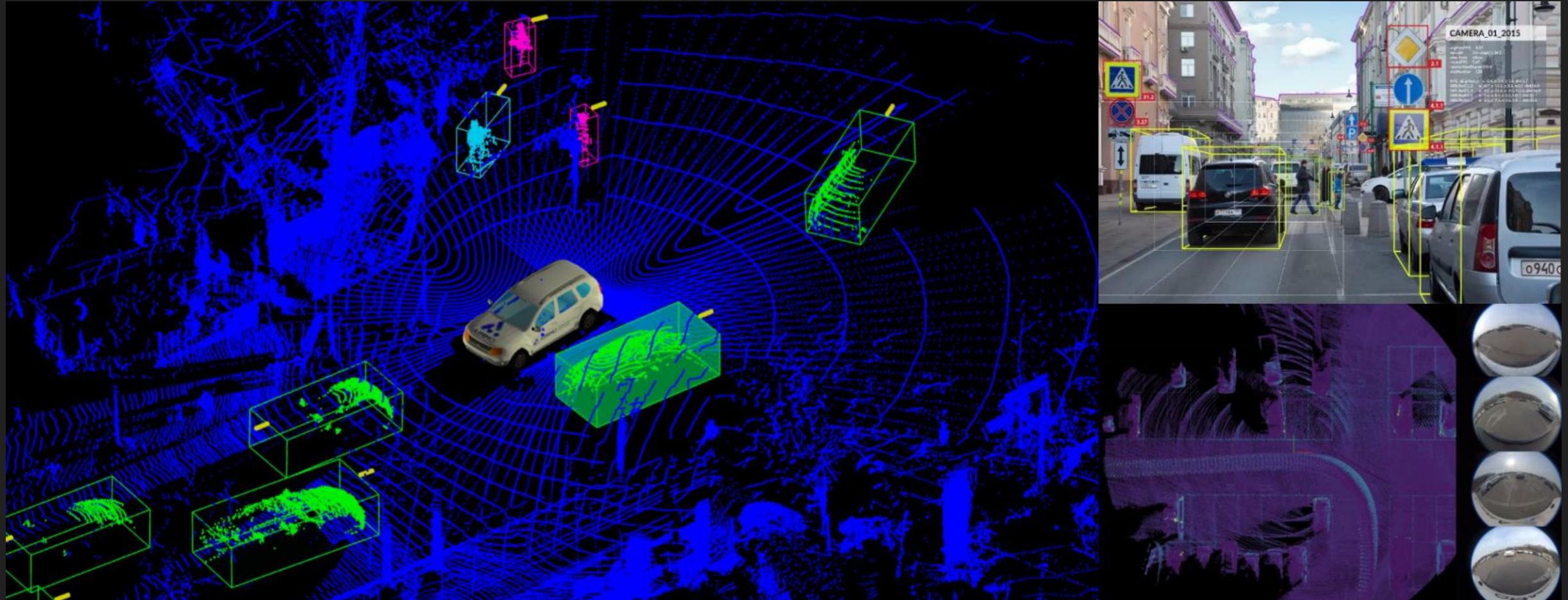
Limited speed attention span human error

① Data Collection to Evaluation

② Computer Vision Modeling

2D / 3D camera drone

#LiDAR & Sensor Fusion, #Sensor Calibration, #Image Generative, #Datasets for autonomous driving and parking



#LLM, #Pre-training, #Fine-tuning, #RLHF, #Multi-Modal, #DLA, #STT, #TTS, #Speech Recognition, #Translation



### Oppenheimer Movie Review : A tense & riveting portrait of human

Renuka Vyavahare, Updated: Jul 21, 2023, 09:33 P

Oppenheimer leaves you in tatters as a man consumed by guilt and inner turmoil, death, the destroyer of worlds." You won't forget this film for a long time.

I am sure everything is commercialized including the movie reviews by so called critics. It was shown on Bookmyshow and based on reviews I booked. Last night I went to watch the movie with my family and 3 other viewers. Entirely we spent torturous 3 hours. It can be a story about someone but certainly not worth making a movie. Do we spend so much just to watch how a scientist was treated by a government. In so many years never watched such a pathetic movie. Want my money back along with compensation

감정상태

Interesting x Good x

Positive x Impressive x

감정상태

Bad x negative x Angry x

 A man in a suit standing at a podium during a presentation. Behind him is a large screen with the text 'AUTO.AI USA' and several logos including 'BASELABS', 'HUMANETICS', 'AAEVE', 'RECOGN', 'KOCNIO', 'Adasens', 'U.S. Dept', and 'AI'. A waveform visualization is overlaid on the bottom of the screen.
 

and I look forward to graduating this year yeah with Miracle dog and I hold amasters and bachelor's degree in computer science from Christmy primary field of Interest include Auto writing estimation simulations synthetic data generation and computer vision these areas from the backbone of my work at Amo and will be the focus of our discussion today

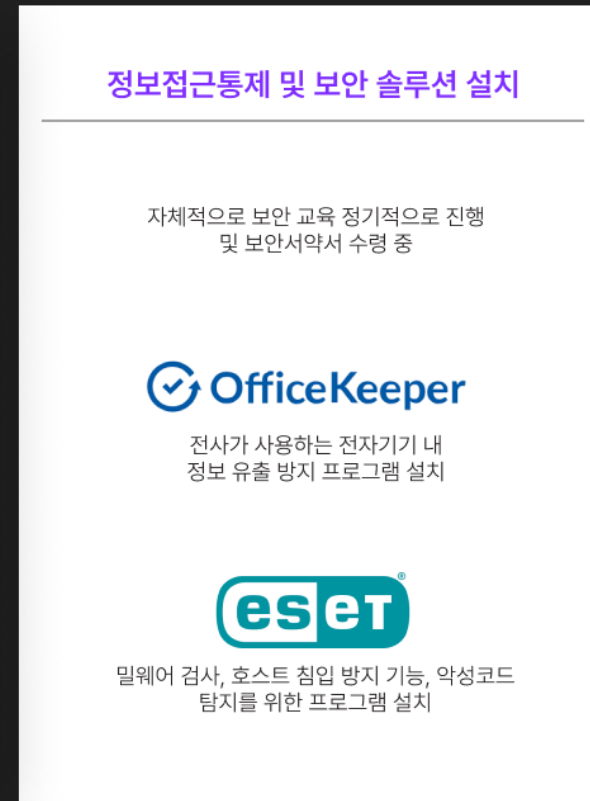
# 03 Security and Patent

Optimized data for your valuable AI research  
Collaborate with trustworthy AIMMO

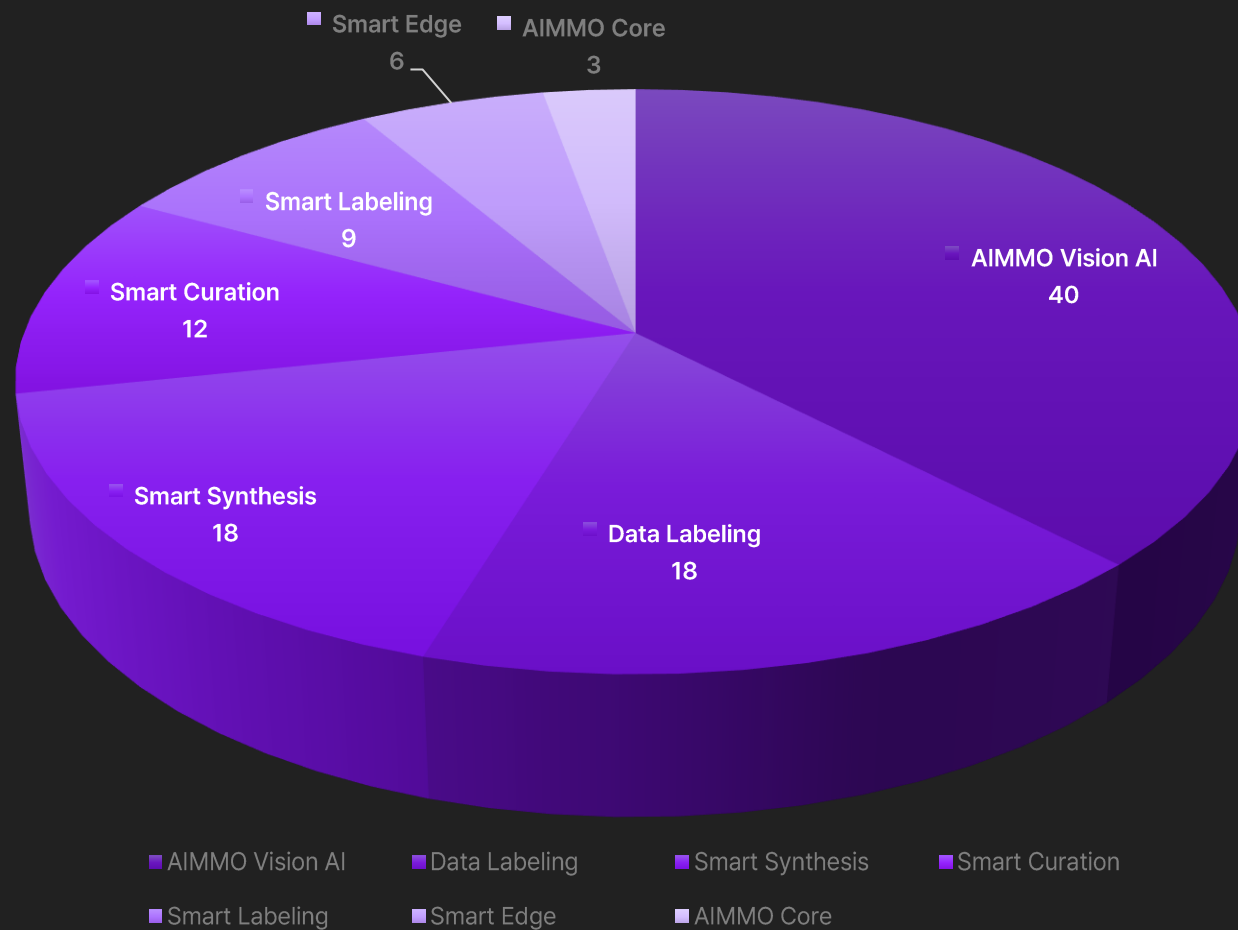
Enabling a data-powered tomorrow



AIMMO excels in managing AI training data using secure methods. We strictly adhere to information protection policies, technical securities, physical security, managed security, and information access control. AIMMO has obtained ISO/IEC 27001 certification from ISO and IEC on October 14, 2020



Total: 50 cases / Registered: 17 cases / Filed: 33 cases





Date	Content
2018.1	Joining the Intelligent Information Industry Association
2019.5	Selected as a Data Voucher Supplier by the Korea Data Industry Promotion Agency
2019.5	Entered into a Memorandum of Understanding for the Establishment of the Gyeonggi Autonomous Driving Industry Ecosystem
2019.7	Building Learning Data for Incheon Airport Artificial Intelligence Identification and Tracking System
2019.11	Winner of the 2019 Autonomous Driving STARTUP Investment-Linked Audition
2019.12	Received the Minister of Science, Technology, and Information Communication Award (for contributions to leading the intelligent information society)
2020.5	Selected as a Member of the 'Microsoft Startup Program & NVIDIA Inception Program
2020.6	Signed an MOU for 'Activation of Artificial Intelligence Data Ecosystem' with Gwangju Metropolitan City
2020.9	Selected as the Implementing Company for the 2020 Artificial Intelligence Learning Data Construction Project, Organized by the Ministry of Science and ICT and the National IT Industry Promotion Agency (NIA)
2020.11	Signed a Business Agreement with Sejong Special Autonomous City for the Activation of the Artificial Intelligence Data Ecosystem
2020.12	Winner of the 4th Industrial Revolution Award at the 4th Industrial Revolution Awards, and CEO received the award from the Director of the National IT Industry Promotion Agency
2021.3	Selected as the Supplier of the Data Voucher Support Project by the Korea Data Industry Promotion Agency for three consecutive years
2021.6	Signed an MOU for the Gyeonggi Future Technology School, a Corporate-Participation Future Technology Education and Training Initiative
2021.11	Selected for the UK Department for International Trade's 'Global Entrepreneur Program (GEP)'
2022.9	Winner of the 6th Industrial Revolution Award at the 6th Industrial Revolution Awards, and CEO received the award from the Director of the Korea Internet & Security Agency for the AIMO Labelers GT Processing Service
2022.9	Selected as a KOREA AI STARTUP 100
2023.01	Selected as a Data Voucher Support Project Supplier for five consecutive years
2023.10	Selected as a KOREA AI STARTUP 100 (Award ceremony on October 26th)

# AIMMO, AI DATA COMPANY, WE PROVIDE YOUR FUTURE

**Website** [www.aimmo.ai](http://www.aimmo.ai)  
**T** +82-31-706-3533  
**E** [gt@aimmo.co.kr](mailto:gt@aimmo.co.kr)  
**Address** 7F, 41, Beolmal-ro 50beon-gil, Bundang-gu, Seongnam-si, Gyeonggi-do, Republic of Korea

