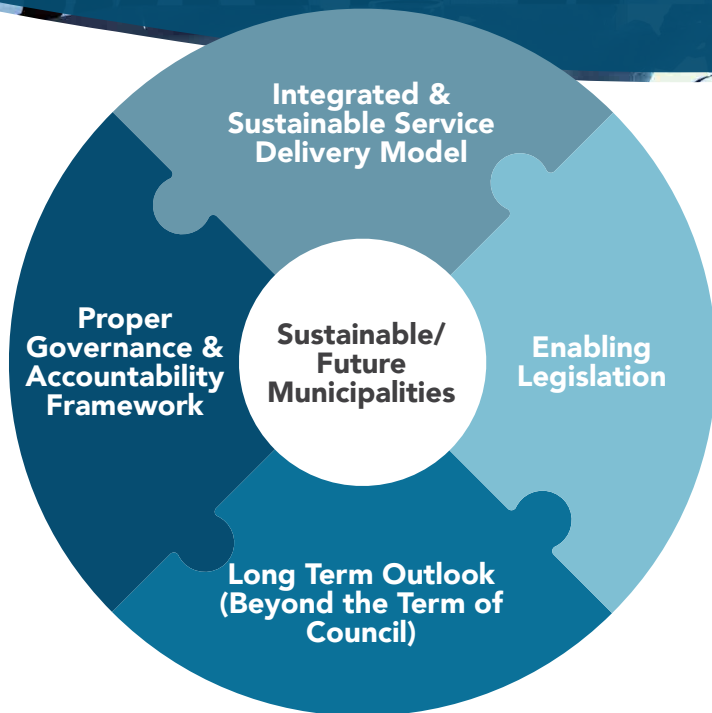




MUNICIPAL SUSTAINABILITY TOOL

An innovative & disruptive approach to spatially depicted data driven decision making



MST™ Focus Areas:

Citizen Single View | Revenue & Debtors Management
 Infrastructure | Human resources | Financial Statements
 Forecasting & Budgeting | Municipal Sustainability
 Index (MSI™) | Spatial Intelligence

Why choose MST™:

First of its kind in Africa | Locally developed in
 South Africa | Can be applied to various sectors &
 industries | A Game Changer

**Login from anywhere & make immediate
 actionable data supported decisions.**



Know Your Community – One View

Data remediation & cleansing

Clean all Municipal data through rules-based remediation tools

Consolidate & enrich the Citizen Profile

Consolidate Citizens private & public sector data to obtain a Single View per Citizen

KYC Single View

Municipalities can make informed decisions around a Citizen & customise service offerings to meet their needs

Consolidate the Community

Consolidate all Citizen Data to obtain One View of the various Communities

Service & Build Your Community

Revenue

Revenue analytics to prompt revenue protection & enhancement

Human Resources

Identify Human Resource requirements & allocation across the Municipality linking resources, revenue & service delivery

Infrastructure

Ensure efficient & effective Asset Management, utilisation & maintenance

Municipal Sustainability Index (MSI™)

Understand Municipality's Sustainability through real-time key indicators drawing attention to where critical intervention is required

Focused Modules

Legislated Reporting (Section 71 Ratios), Financial Planning & Budgeting, Valuation Roll, Tariff Modelling, Debt Impairment, Audit, Procurement, Tourism

For more information visit www.akhile.co.za
 or email godigital@akhile.co.za.