The background of the slide is a panoramic view of the Shanghai skyline at night. The Bund is visible on the left, with the Oriental Pearl Tower and other skyscrapers illuminated. The Huangpu River flows through the center, reflecting the city lights. The sky is a mix of orange and blue, suggesting dusk or dawn. The overall scene is a vibrant and modern urban landscape.

RPA Migration End-to-End Service

| Stable business foundation



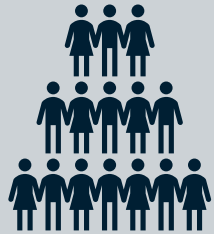
THE ADECCO GROUP

Name	Adecco Group A.G. (Holdings)
Head office	Switzerland (Zurich)
Established	1957
Locations	Over 60 countries and regions
Revenue	23,957 in Euro millions
Employees	38,000 people
Clients	Over 100,000



Name	AKKODiS Consulting Ltd.
Head office	Grand Park Tower 3F, 3-4-1 Shibaura, Minato-ku, Tokyo 108-0023
Head	Kenichiro Kawasaki
Established	February 10, 2004
Capital	1,063 million JPY
Business activities	Consulting business, Software development contracting business, Education business, Staffing business, Freelance business, Paid job placement business
Main offices	Sendai, Utsunomiya, Yokohama, Nagoya, Osaka, Fukuoka
Training center	Tennozu Training Center
Delivery centers	Tokyo, Chubu, Osaka

We provide problem-solving consulting, talent, solutions and technical training to customers nationwide. We offer comprehensive services across multiple fields and deliver flexible services tailored to client needs.



Employee

10,063

Jan. 2024



FY2023 revenue

71.1 billion JPY



Clients

Over **10,000**

Services

Consulting

Solution

Talent

Academy

50,000 engineers and digital experts in 30 countries across North America, EMEA and Asia Pacific, providing dynamic expertise transcending borders and regions



Acquiring globally accumulated knowledge

Applying domestic problem-solving to global

Utilization of AKKODiS global network and customer support



Integration with Existing Microsoft Ecosystem

Customers prioritize RPA solutions that seamlessly integrate with Microsoft's suite of products such as Office 365, Azure, and Dynamics 365. This integration ensures compatibility, data flow continuity, and enhances productivity across their existing IT infrastructure.



Advanced AI Capabilities

Microsoft's RPA offerings leverage AI and machine learning capabilities through Azure AI services. Customers seek these advanced functionalities to automate complex business processes, improve decision-making through data analytics, and achieve higher operational efficiency.



Ease of Use and Affordable Pricing

Microsoft products are popular among enterprise companies for migration due to their ease of use in low-code contexts and affordable pricing that counters rising licensing costs.

AKKODiS Japan is a leader in RPA migration to Microsoft Power Automate, offering comprehensive end-to-end consulting and delivery services. Utilizing the most efficient migration methods that allow you to transition to Power Automate for 50%-70% less effort than manual efforts and a team of experienced engineers from both Japan and India, we provide unparalleled service to clients worldwide.

Onboarding



Providing bot files:

AKKODiS receives the bot files (UiPath, Automation Anywhere, Blue Prism etc.) that need to be migrated to Power Platform.

Assessment



Analysis:

Analyze the bot files to calculate the number of bots that can/cannot be migrated by using semi-automated migration methods.

Resource planning:

Create a quotation based on the necessary skill level and FTE.

Migration



Migration:

RPA bot migration from UiPath/Blue Prism etc. to Power Automate using semi-automated migration methods.

Manual development

Any bot that cannot be migrated automatically by the tools will be developed manually, including modifications.

Bot modernization



Process Modernization

Enhance automated processes by integrating with other Microsoft services (Power Apps, Teams etc.).

Submission

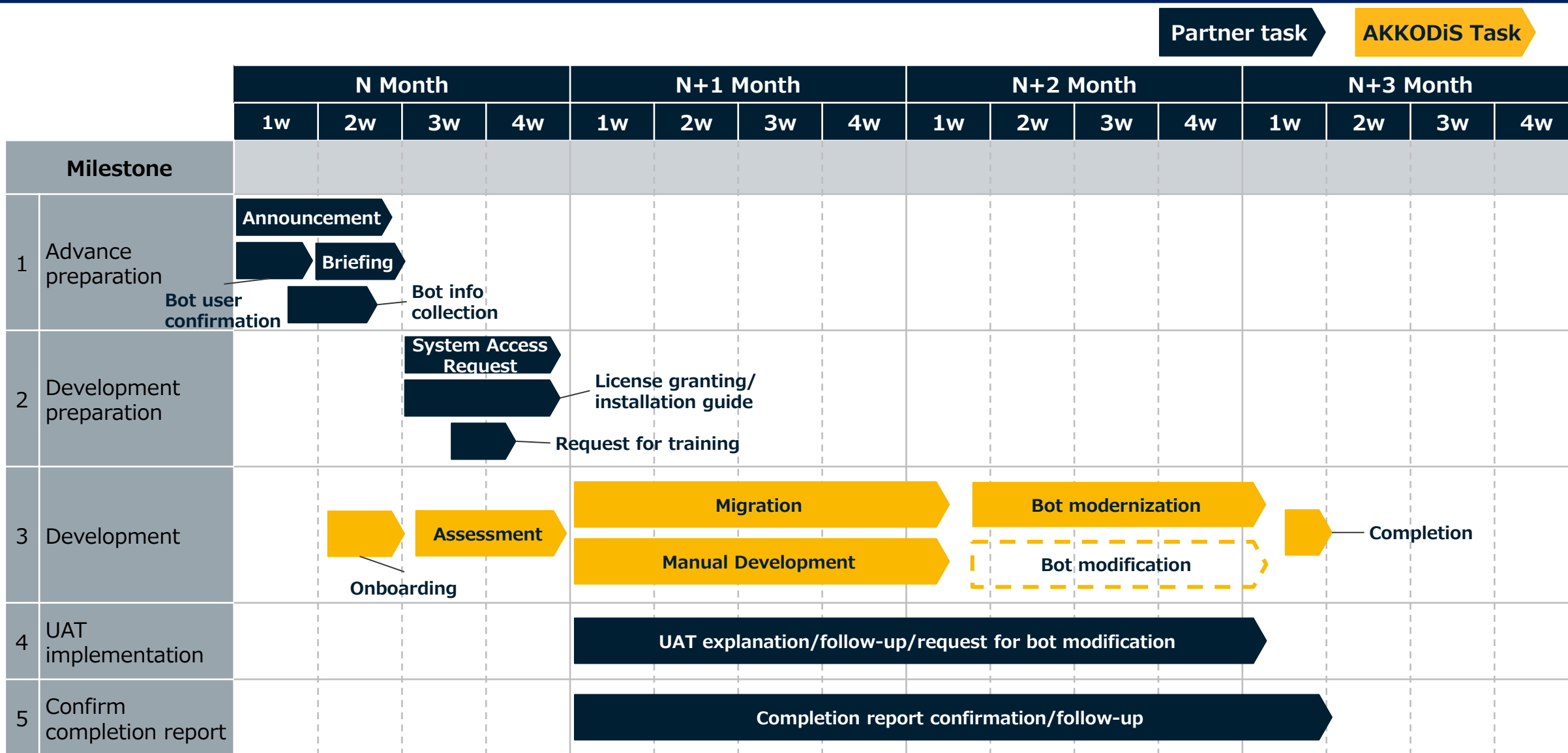


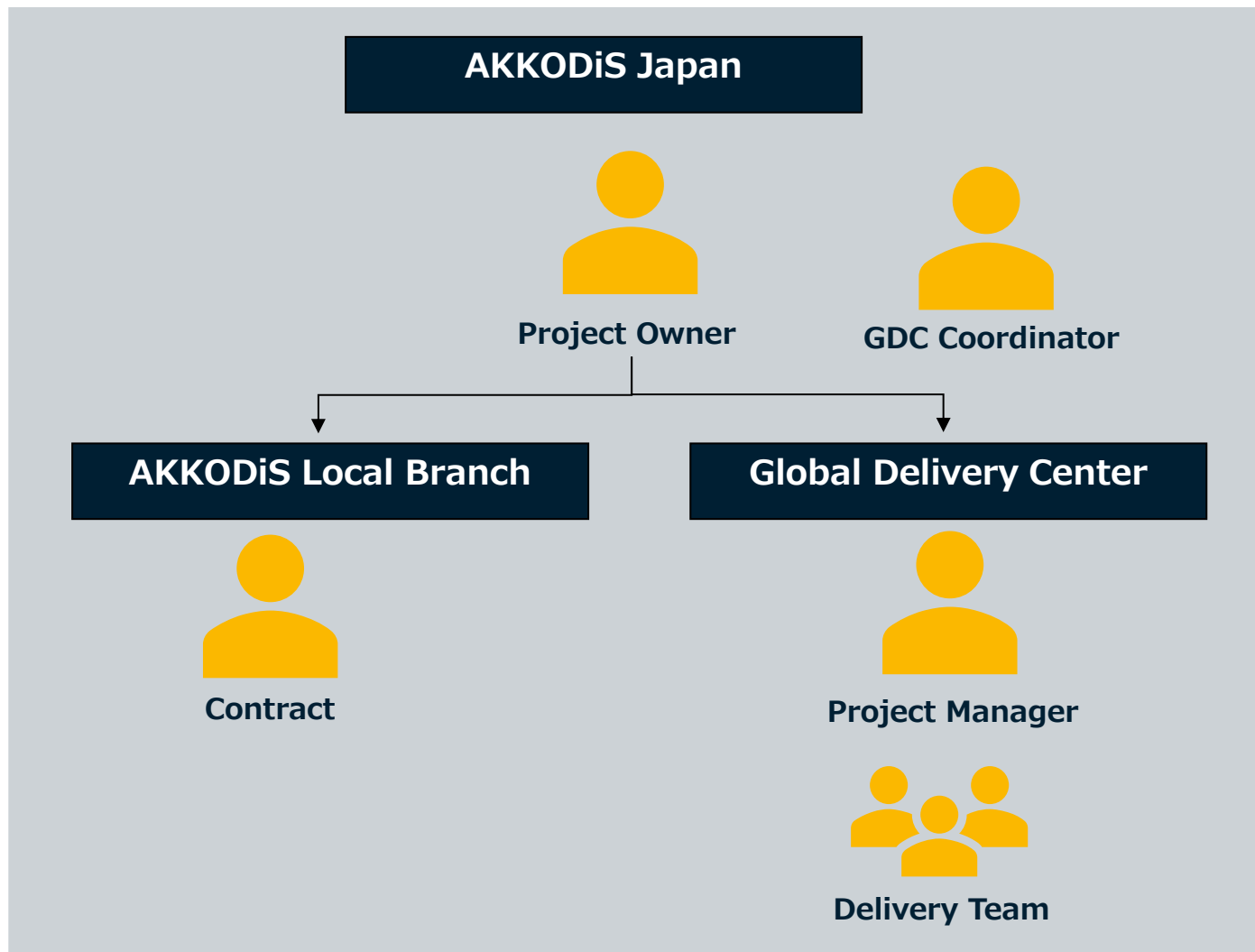
File submission:

Submission of migrated RPA bot files back to either Microsoft or local partners.

*can be submitted in a single batch or in multiple small packs.

Scope of Offshore Development

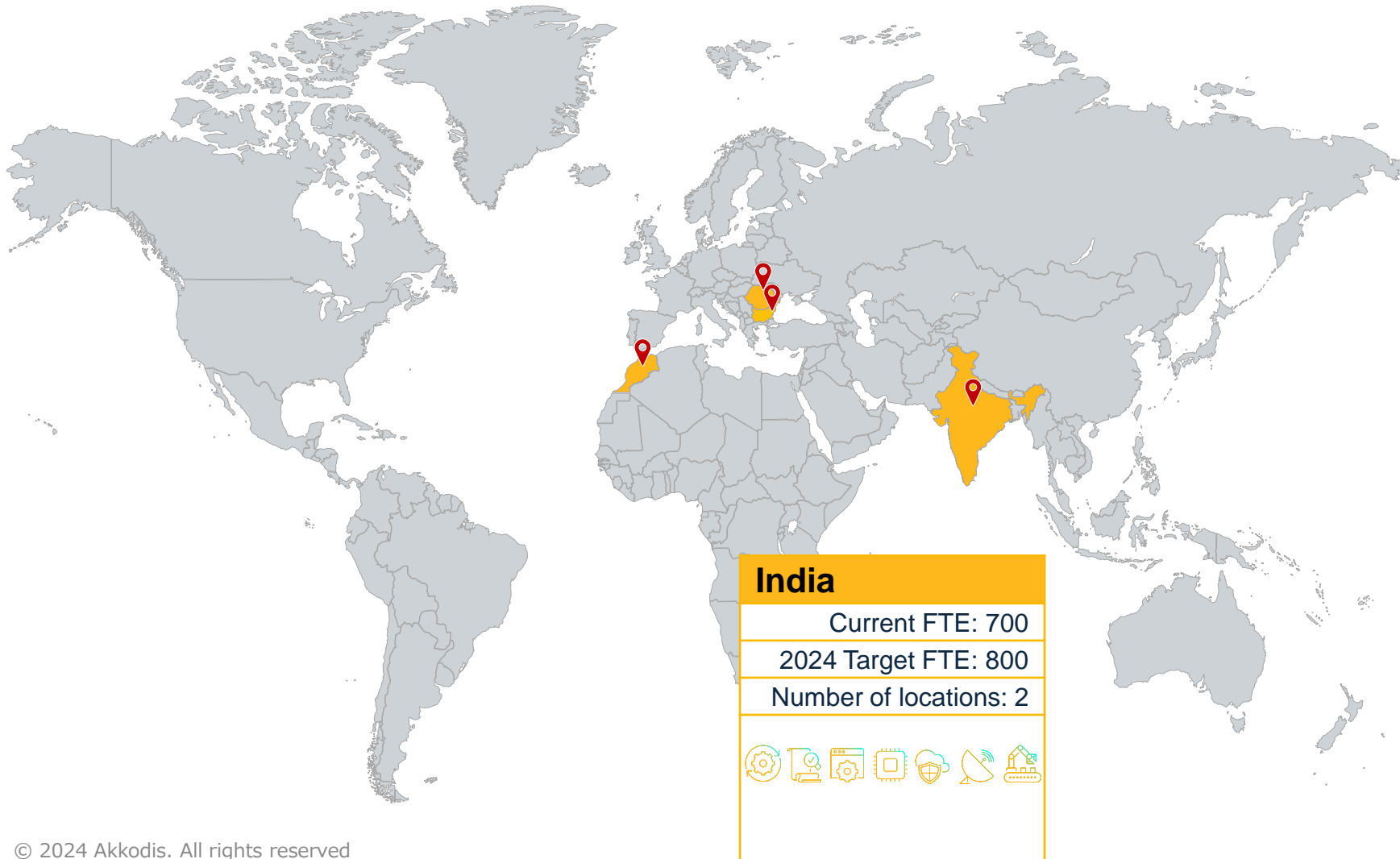




Roles	
Project Owner	In charge of communicating with customers and mastering project management.
GDC Coordinator	In charge of coordinating the service delivery with GDC.
Contract	In charged of providing support for contractual matters.
Project Manager	In charge of mastering project plan execution and overlooking the delivery team and ensuring the service quality.
Delivery Team	Provides expertise in RPA migration and development.

Global Delivery Center Overview

Global Delivery Centers (GDCs) are overseas offshore development bases that offer a wide range of technical human resources: over 2,500 engineers in 4 countries.



- Product & System Development
- Validation & Verification
- Manufacturing & Operations
- Digital & Software
- Data Analytics & AI
- Wireless & Connectivity
- Cloud, Infrastructure & Security

7 Global Tech Practices

- Automotive & Transportation
- Aerospace & Defense
- Information & Communication Technology
- Manufacturing & Logistics
- Banking & Financial services
- Life Sciences & Healthcare
- Energy & Clean Technology

7 Global Industries

3+
years

Global Industries



Automotive & Transportation



Aerospace & Defense



Information & Communication Technology



Life Sciences & Healthcare



Manufacturing & Logistics



Energy & Clean Technology



Banking & Financial Services

750+
engineers & developers

Global Practices



Product & System Development



Validation & Verification



Digital & Software / Low Code, No Code (RPA)



Data Analytics & AI*



Cloud, Infrastructure & Security*



Wireless & Connectivity*



Manufacturing & Operations

Engagement Models

ODC Model

Project ownership

Work Package(s)

Co-development

Consulting

**In collaboration with Partners*

Multi – Location (*exploration)



Certifications

