



# AI & ML Readiness Navigator



ANS

Think Bigger.



# What is the ML & AI Readiness Navigator?

ANS' Artificial Intelligence and Machine Learning Navigator will help you overcome the complexities of adopting AI and ML by demystifying the terminology and technologies involved. By looking at your current state vs desired future state, we can help you define and build your AI and ML strategies to create new and exceptional value from your data, thus creating new opportunities within your organisation and your customers.

## Who's it suitable for?

**This Navigator is ideal for organisations who are:**

- ✓ Looking to adopt Artificial intelligence and Machine Learning
- ✓ Wanting to ensure the ethical use of AI and ML
- ✓ Wanting to develop a roadmap for implementing AI & ML including timelines, budgets and milestone
- ✓ Lacking process automation resulting in poor quality of goods/ services or delays and inaccuracies
- ✓ Clear on the value AI & ML offerings can bring but aren't sure how to technically achieve it

## What's an ANS Navigator?

Navigators are complimentary engagements that provide you with the resources and information to be able to realise your long-term strategic vision and steer your digital transformation journey.

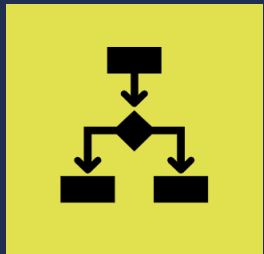


# What Outcomes Should you Expect?

- 01 Process Analysis**  
Defined AI & ML goals as well as showing you where you can add value, ensuring alignment to your business objectives.
- 02 Data analysis**  
Assessment of the quality, amount, ownership, access and availability of your data.
- 03 State of the Market**  
Competitor analysis and cutting-edge technologies available.
- 04 Skillset**  
Identify the skills needed to ensure you have the right people.
- 05 Roadmap**  
Develop a roadmap for implementing AI & ML across your business including timelines, budgets and milestones.
- 06 Solution proposition**  
Evaluated costs and benefits of investments in the most appropriate infrastructure and skillsets.
- 07 Ensure ethical use**  
Establishing guidelines aligning with your company's values and reducing risk.

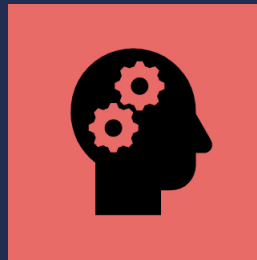


# The Benefits



## Operational

- Increase process efficiency
- Create new methods
- Find and fix bottlenecks
- Automate repetitive tasks
- Predictive maintenance
- Quality control



## Technical

- Current state definition
- Competitor analysis
- Data quality increase
- ML Ops creation
- Skillset augmentation



## Commercial

- Increase customer knowledge
- Create new sources
- Identify marketing opportunities
- Churn avoidance
- Risks, fraud management
- Faster, more informed decisions

# Why use an ANS Navigator?

## **Rapid time to value**

It typically takes 4-6 weeks to complete this Navigator and usually only requires around 10 hours of your time spread over those weeks.

## **Board-ready outputs**

We will provide you with board-ready outputs, a strategy document, business case and presentation.

## **Unlock funding from Microsoft**

If you undertake this journey with ANS, you are more likely to be able to unlock funding from Microsoft to help deliver on your AI & ML aspirations.

## **Advice and Recommendations**

The Navigator will help find bottlenecks and advise how to overcome those through process efficiencies, predictive maintenance and quality controls



# Want to know more?



ANS

Think Bigger.

To find out more, please speak to your Account Manager, or to request a meeting, visit [ans.co.uk](https://www.ans.co.uk)

#### Telephone

0800 458 4545

#### Web

[www.ans.co.uk](https://www.ans.co.uk)

#### Address

ANS Group, ANS Campus, Birley Fields, Manchester  
M15 5QJ

