

TESTMATCH: AUTOMATED TESTING

FACT SHEET

AT A GLANCE



Astadia's TestMatch provides automated testing of mainframe OLTP (terminal based Online Transaction Processing applications). It can be used to facilitate the migration of such legacy applications to open systems, or it can provide an automated regression test suite for a legacy application.

PRODUCT HIGHLIGHTS

Centralized test scenario recording

All user interactions can be recorded centrally on an IBM or Siemens mainframe using standard tools (no client-side or server-side installation of Astadia tools). Since the recording is done at the network level, it works regardless of the development technology (IDMS, BMS, DMS, Natural). Many protocols are supported: 3270 (IBM), 9750 (Siemens), Entire/X, MQ, TCP/IP.

Visualization

TestMatch visualizes test scenarios and sessions: this includes the terminal contents as well as all attributes that are typical for terminal-based applications: protected/editable, MDT bit, reverse-video, colors.

Replay

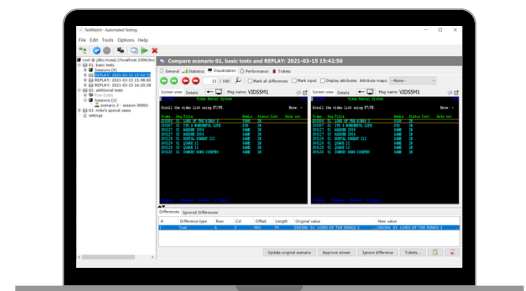
TestMatch can replay the recorded scenarios, either against the migrated application (as a migration testing tool) or against the original application (as a regression testing tool). Normal replay can either include or leave out user think time. Stress-testing replay can launch many scenarios in parallel.

Comparison

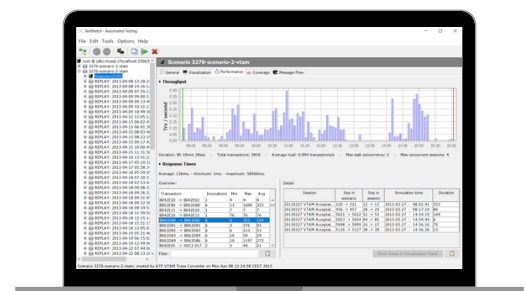
The integrated diff tool shows a side-by-side comparison of a recorded scenario and its replayed counterpart.

Test analysis

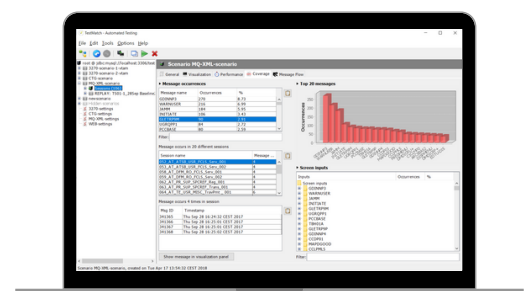
TestMatch provides detailed analysis of response times and throughput, and also contains helpful utilities to detect performance problems. It calculates elaborate test scenario coverage statistics and the pass rate of replayed tests.



Side-by-Side Comparison

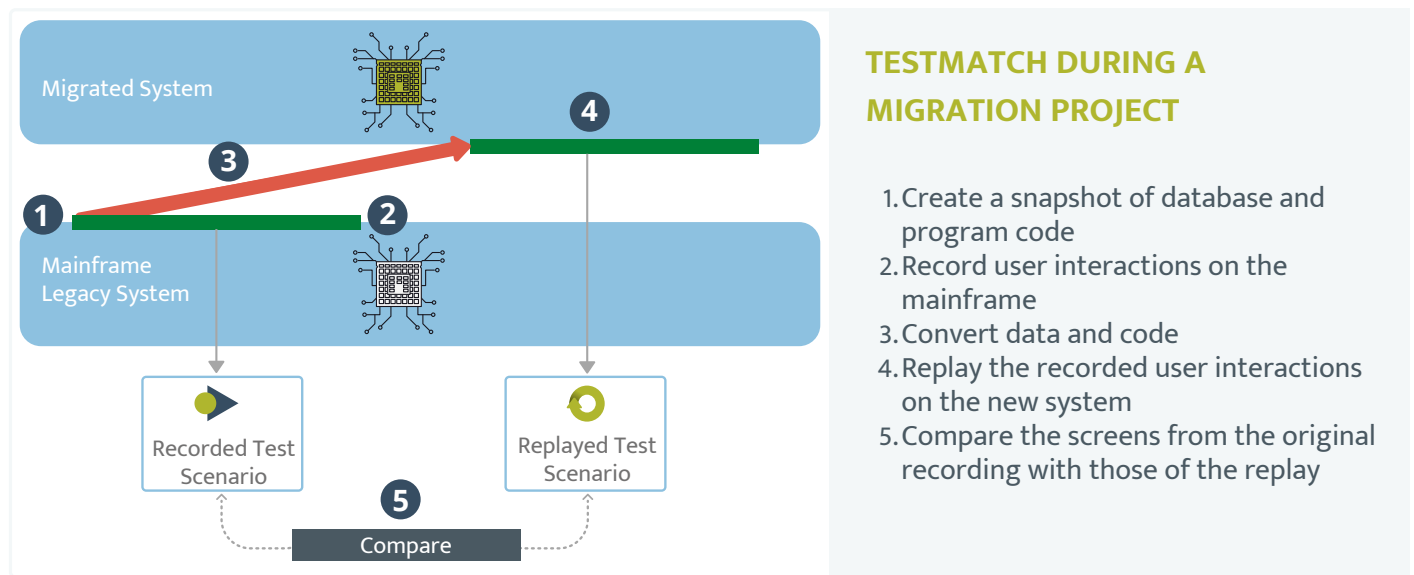


Performance Analysis

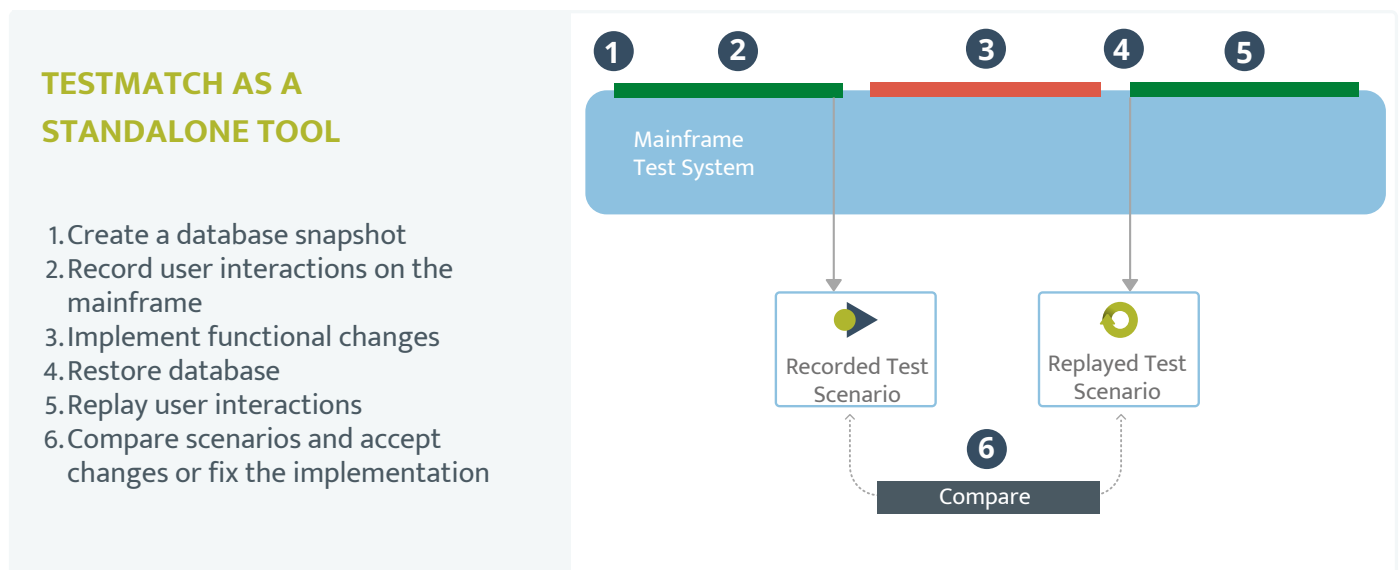


Coverage Analysis

TESTMATCH IN ACTION



During a migration project, TestMatch is used to ensure the 1-to-1 functional equivalence between the original application and its migrated counterpart. For software migrations, Astadia uses the FastTrack project management methodology, which applies a migration/testing cycle as depicted above in consecutive, always shortening cycles.



Outside of a migration context, TestMatch is used as a regression testing tool on the legacy test system. Initially, a baseline regression test suite is established (step 1 and 2).

After the implementation of a functional change, the test suite is run to verify that only the desired changes took place and any undesired side-effects of these changes are fixed in the implementation. The desired changes can then be accepted into the regression test suite too, so that this test suite evolves together with the application and at any point reflects the current functionality of the system.

Astadia is the market-leading mainframe modernization consulting and systems integration boutique. A worldwide IT consulting firm, we specialize in moving IBM and Unisys mainframe applications and databases to distributed and cloud platforms.