



Power Platform Center of Excellence (CoE) Kit

The Power Platform Center of Excellence (COE) Starter Kit provided by Microsoft is a comprehensive set of pre-built tools and resources designed to help organizations establish and manage their Power Platform COE effectively. The Starter Kit includes:

1. **Power BI Reports:** Pre-configured Power BI reports that offer insights into Power Platform usage, adoption metrics, app inventory, governance, and compliance data. These reports enable COE teams to monitor and analyze the health and performance of Power Platform applications within the organization.
2. **Power Apps Canvas Apps:** Ready-to-use canvas apps that facilitate various COE activities, such as requesting new apps, submitting feedback, accessing documentation and resources, and managing governance policies. These apps provide a user-friendly interface for COE members and app owners to interact with COE processes and workflows.
3. **Power Automate Flows:** Automated workflows built with Power Automate to streamline COE tasks, such as app provisioning, policy enforcement, notification alerts, and data governance processes. These flows help automate routine tasks and ensure consistency in COE operations.
4. **Documentation and Best Practices:** Guidelines, documentation, and best practices for setting up and operating a Power Platform COE, including governance policies, security recommendations, training materials, and implementation guidance. These resources serve as a reference for COE members and stakeholders to align with industry standards and Microsoft recommendations.

Overall, the Power Platform COE Starter Kit empowers organizations to establish a centralized governance structure, drive adoption, and maximize the value of the Power Platform within their organization by providing pre-built tools, reports, and guidance tailored specifically for COE teams.

Centre of Excellence Components

Core Component

These components provide the core to get started with setting up a Center of Excellence (CoE). They sync all your resources into tables and build admin apps on top of that to help you get more visibility of the apps, flows, and makers in your environment. The core components solution contains assets relevant only to admins.

Governance Component

After the inventory is setup and you become familiar with your environments and resources, you might start thinking about governance processes for your apps. You might want to gather additional information about your apps from your makers, or audit specific connectors or app usage. The Governance components solution contains assets relevant to admins and makers. The Governance component helps to govern the environment using the apps and flows.

Nurture Component

An essential part of establishing a Center of Excellence (CoE) is nurturing your makers and an internal community. You want to share best practices and templates, and onboard new makers. The assets in this solution can help you develop a strategy for this motion. The CoE nurture components solution contains assets relevant to everyone in the organization: admins, makers, and users of apps and flows.

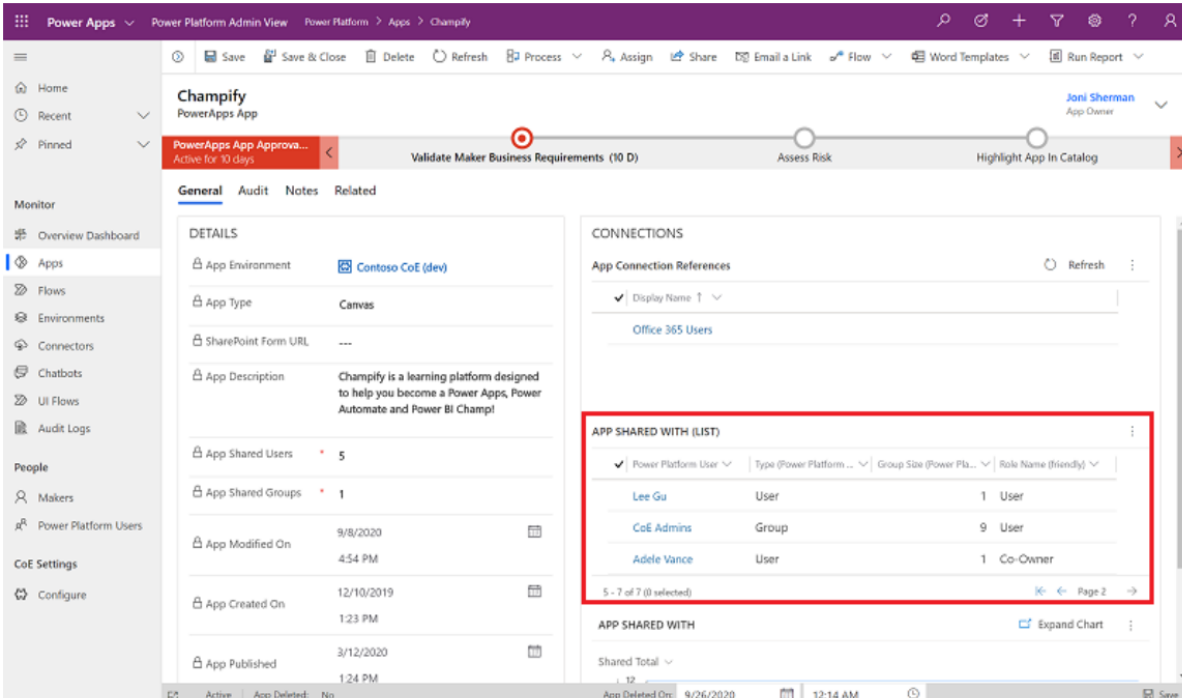
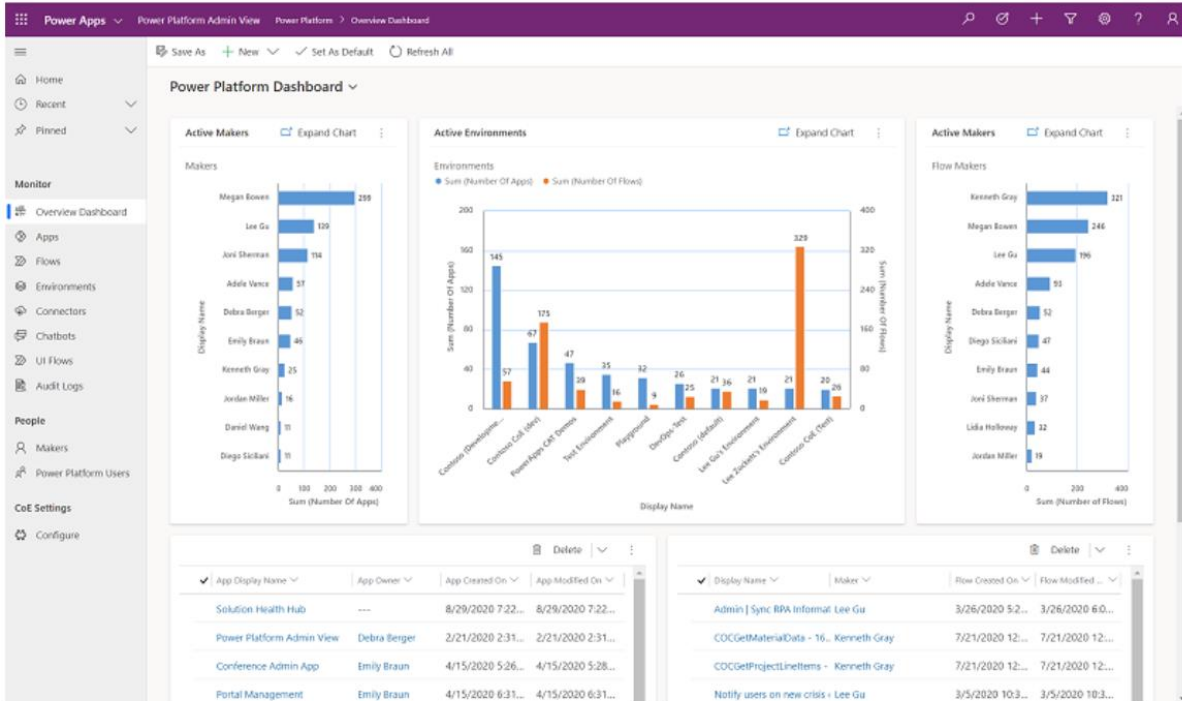
Theming Component

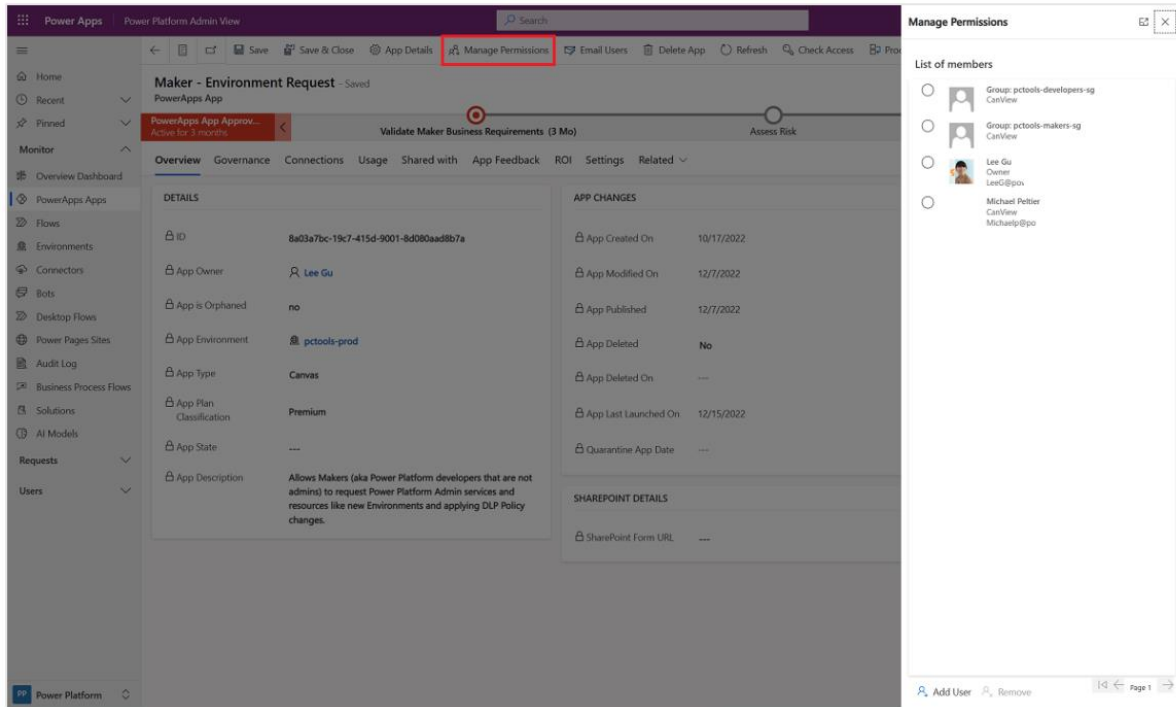
You use theming components to create and manage themes for canvas apps. A *theme* contains a collection of styles that define multiple design properties for controls and components such as colors, fonts, and borders. These styles are then applied automatically when makers use the themed template app to create a new app; controls and components are automatically themed. The theming components help ensure that makers can focus on what matters—the business logic and problem they're trying to solve—and users can have a consistent experience when using apps.

Innovation Backlog components

the Innovation Backlog app helps to ask users to submit ideas for apps and flows that need building and describe pain points with the current process. As users describe the process, they will provide information about personas involved, tools used, and measures for improvement. This information is then used to calculate an ROI and complexity score.

Power Platform Admin View





The screenshot shows the Power Apps Admin View interface. The main content area displays the details for the 'Maker - Environment Request' app. The 'Manage Permissions' tab is selected and highlighted with a red box. The 'List of members' pane on the right shows the following users:

- Group: pctools-developers-sg
CatView
- Group: pctools-makers-sg
CatView
- Lee Gu
Owner
leegu@pco
- Michael Potler
CatView
Michaelp@pco

The app details include:

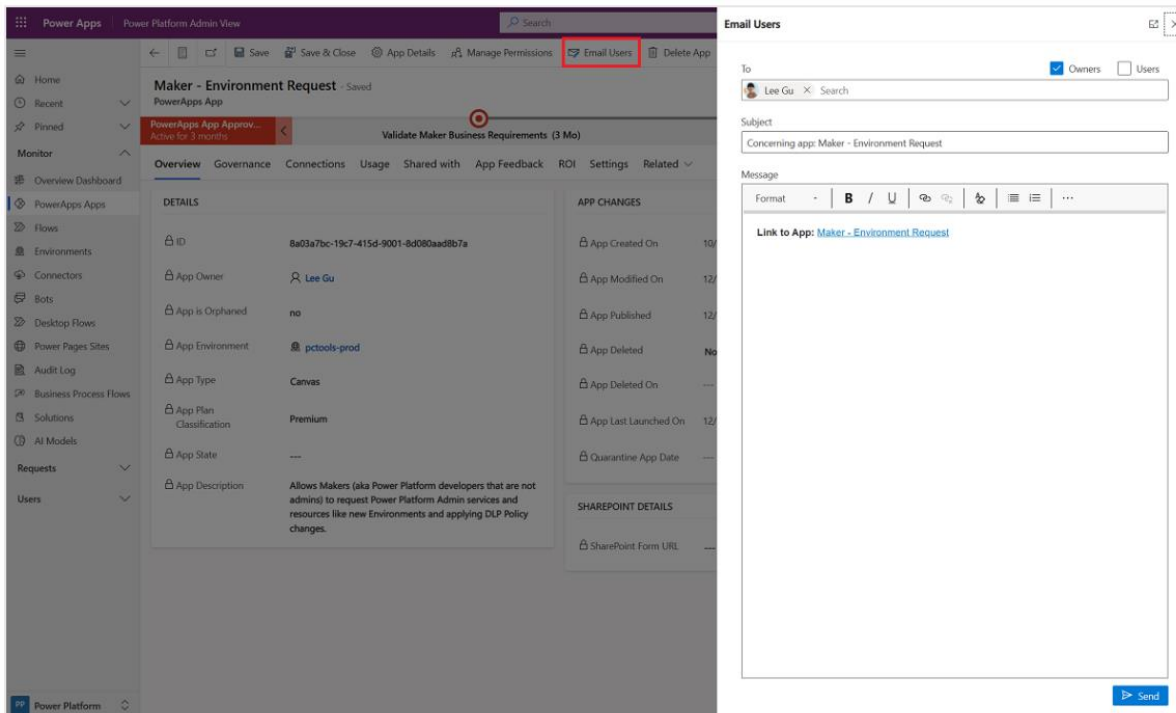
- ID: 8a03a7bc-19c7-415d-9001-8d080aad8b7a
- App Owner: Lee Gu
- App is Orphaned: no
- App Environment: pctools-prod
- App Type: Canvas
- App Plan Classification: Premium
- App State: ---
- App Description: Allows Makers (aka Power Platform developers that are not admins) to request Power Platform Admin services and resources like new Environments and applying DLP Policy changes.

The 'APP CHANGES' section shows:

- App Created On: 10/17/2022
- App Modified On: 12/7/2022
- App Published: 12/7/2022
- App Deleted: No
- App Deleted On: ---
- App Last Launched On: 12/15/2022
- Quarantine App Date: ---

The 'SHAREPOINT DETAILS' section shows:

- SharePoint Form URL: ---



The screenshot shows the Power Apps Admin View interface with the 'Email Users' tab selected and highlighted with a red box. The 'Email Users' pane on the right shows the following details:

- To: Lee Gu (Search)
- Subject: Concerning app: Maker - Environment Request
- Message: Link to App: [Maker - Environment Request](#)

The main content area displays the details for the 'Maker - Environment Request' app, which are identical to the first screenshot.

Power BI Dashboard and Reports

CoE Starter Kit Dashboard

MONITOR

- Power Apps (Overview)
- Power Automate (Overview)
- Custom Connectors
- Environments
- Teams Environments
- Business Process Flows
- Bots (Overview)
- Bots (Deep Dive)
- Power Pages
- Solutions
- AI Builder

Query Power Platform inventory (Environments, Apps, Flows, Makers, Connectors, Bots, Solutions, AI Builder models, Pages) at scale and monitor usage across your entire tenant and at environment level. These reports also support appropriate drill downs, trending, filtering (by maker department/country/city, connector usage, premium feature usage)

GOVERN

- Apps (Deep Dive)
- Cloud Flows (Deep Dive)
- Desktop Flows (Deep Dive)
- Environment Capacity
- Connectors (Deep Dive)

Perform risk assessments based on viral sharing, connector or operation usage, identify complex flows and orphaned or unused resources. Take action through an embedded app to take ownership, email the maker or delete the resource.

NURTURE

- Makers
- App Usage
- Desktop Flow Usage
- Power Apps Adoption
- YoY Adoption
- Cloud Flow Usage

Find your star app and flow makers, see what connectors they are using, where they are based (department/city/country) and how they are adopting the Power Platform.

◀ ▶ **Introduction** Overview - Power Apps Overview - Power Automate Overview - Power Virtual Agents Environments Makers Environment Capacity

Overview - Power Apps

2722
Apps

22 # App Makers
33 # Created in the last month

578
Canvas Apps

421
Model Driven Apps

(Blank)
SharePoint Form Apps

1723
Custom Pages

(Blank)
Component


Top 20 Environments by App Count

Environment Name	# Apps
pctools-test	141
pctools-prod	128
pctools-validation	122
creator-kit-dev	108
coe-byodi-test	106
coe-governance-components-dev	105
coe-febrelease-test	104
coe-core-components-dev	90
CoE (Prod Install)	89
Graham Barnes's Environment	82
temp-coe-byodi-leeq	80
alm-accelerator-validation	79
coe-auditlog-components-dev	79
CoE (BYODL Prod Install)	76
coe-core-components-dev-copy	74
pctools-proof-of-concept-dev	60
test unmanaged	60
coe-nurture-components-dev	59
coe-byodi-components-dev	55
alm-accelerator-test	49

Top 20 App Makers

App Owner	# Apps
Lee Gu	652
Adele Vance	428
ALM Accelerator	352
Nathan Rigby	319
Graham Barnes	188
Mateo Gomez	128
Nestor Wilke	105
SYSTEM	90
Lynne Robbins	63
Mario Rogers	63
Michael Pettier	52
Debra Berger	51
# ALM Accelerator	39
Alan Steiner	36
# Mateo Gomez	31
ALMAcceleratorServicePrincipal	26
# Nathan Rigby	18
# Mario Rogers	13
# ALMAcceleratorServicePrincipal	10
Joni Sherman	9

Top App Maker Cities



Filters

Search

Filters on all pages

Environment Name is (All)

Environment Type is (All)

Is Orphaned is (All)

Introduction | **Overview - Power Apps** | Overview - Power Automate | Overview - Power Virtual Agents | Environments | Makers | Environment Capacity | Teams Environments