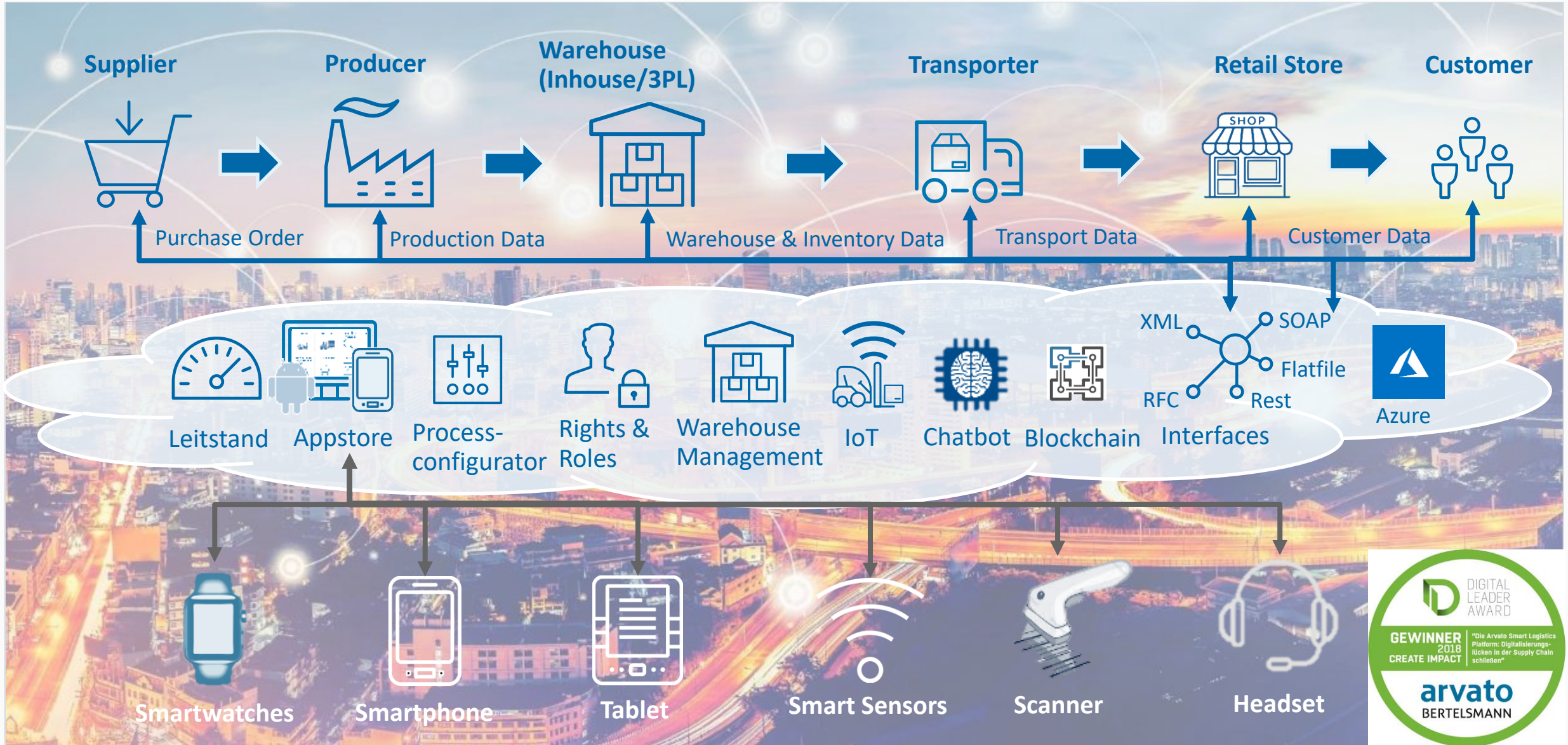


Arvato Smart Logistics Platform (ASLP)– „Digital Construction Kit“



Arvato Smart Logistics Platform | Markets & Trends & Driver



The logistics sector as a whole employed more than 3million people in 2017 and generated 267 billion € → following automotive and retail as the third largest business sector in Germany.



People working in Warehousing and transshipment account for more than 50% of all logistics employees.



Logistics is a cross-sectional function. More than 65% are employed in other sectors, i.e. not directly by logistics service providers.



Compared to other industries, the degree of digitization in logistics is lagging behind. Many processes are still paper-based.



The deployment of Cloud-IT in logistics and the willingness to invest are constantly increasing.



There is a sustainable trend towards the use of wearables in industry and logistics. Compared to 2016, sales increased by 33% in Europe and by 18% in Asia.



The development towards automation is on the edge of really taking off. Amazon already used 120,000 robots in its warehouses in 2017 → Three times the amount of 2016.



The use of intelligent transport robots will initially make further progress in mass-market-like applications, such as distribution centers in e-commerce.



Standardized interfaces are required to efficiently and continuously guarantee networking communication between the various components of The Internet of Things. These could be safeguarded by Blockchains that can securely exchange information and run smart contracts such as the billing of a transport fully automatically.

ASLP Intralogistics Solutions– Range of Functions Basic



Control Station



Order Management



Resource Management



Storage Space Management



User / Role Management



3D-Storage Visualization



Performance Management/
KPI-Dashboard



Device Management



Process configurator

Appcenter Intralogistik



Goods In
Booking



Inventory
Control



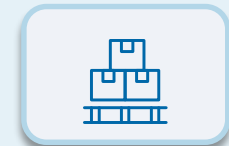
Put away



Replenishment



Order Picking
(Single-Pick)



Order Picking
(Multi-Pick)



Packaging



Loading



Production
Supply



Returns

Supported mobile Devices



Smartwatch



Smartphone



Tablet



Mob. Printer



Sensors



Scanner



Smartglasses



RFID-Reader

Advantages Chatbots



Information can be collected anywhere (in the warehouse, in the train, at the airport) with mobile Devices or also at the PC.



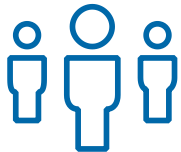
Communication with chatbots is possible around the clock. There is no waiting time due to illness, break or vacation and the answers are available within seconds.



The use is as intuitive as online shopping. The communication similar to "Whats App" is (almost) known to everyone.



The chatbots are hosted in the cloud and do not require their own servers. System availability is given 24/7.



The cloud enables high scalability. There is no limit to the number of users.



The chatbot platform from Arvato Systems can be connected to several different data sources.



Chatbots can be used to digitize manual entries and automatically control processes based on rules.



Communication with chatbots using mobile devices can be text or voice based. This makes input easier.



Extensive role and authorization structures ensure a high degree of security for the users.



The implementation time for simple chatbots is a few days. The easy handling allows shortest learning times.

Advantages in a Nutshell!

Applicable everywhere!

Whether internal or external, national or international, in logistics, production, in the branch or in the health care sector. The Arvato Smart Logistics Platform can be used in (almost) any company for (almost) any process.

Easy to comprehend!

The operation of the wearables and the platform is very intuitive and user friendly. The average user learning time for a Smartwatch is 30 minutes at most!



**We digitalize
and integrate
your processes
along the supply
chain**

Short implementation times and high scalability!

Predefined and configurable apps as well as convenient control functions in the control station enable implementation in just a few days. The cloud technology allows unlimited user access..

Transparent pricing model & Short term ROI!

The cost of using the ASLP and apps is very low. In addition to a practical test, only monthly user costs are incurred for operation. Compared to conventional devices, wearables are often far cheaper.