

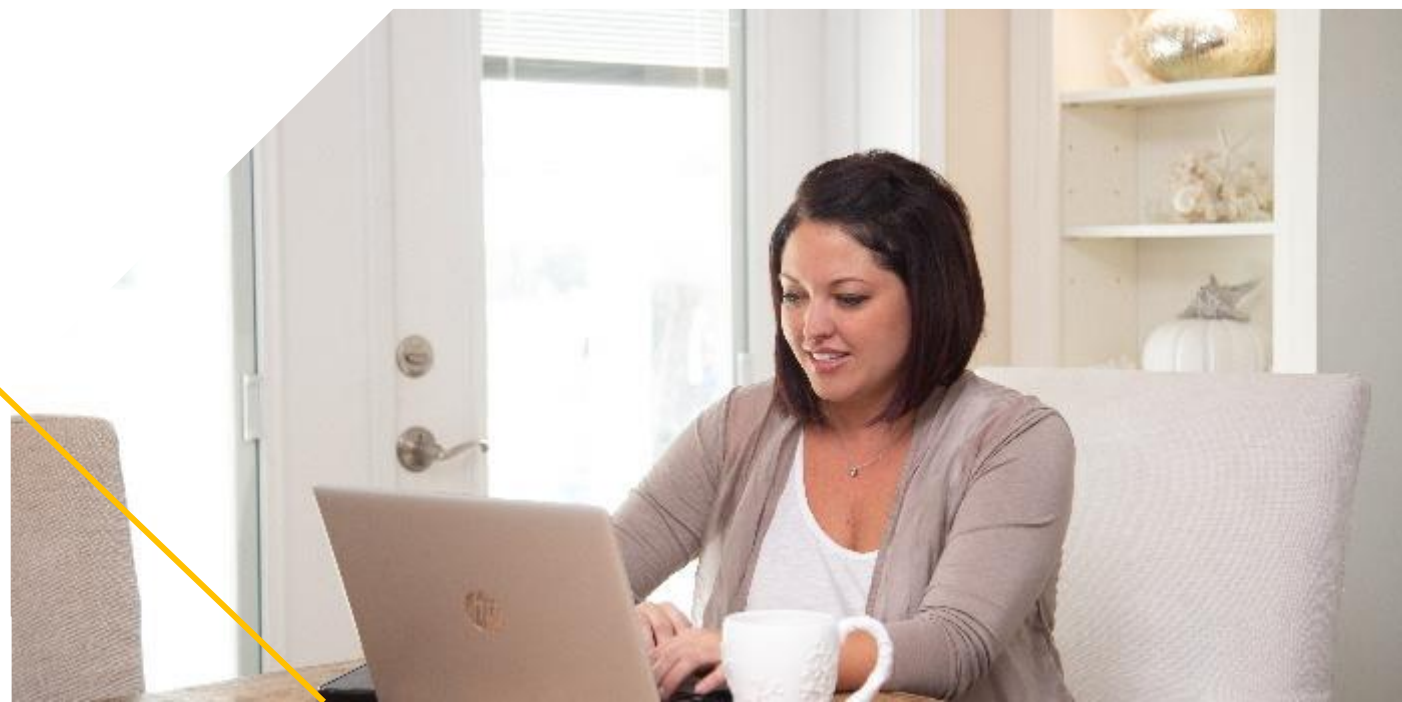
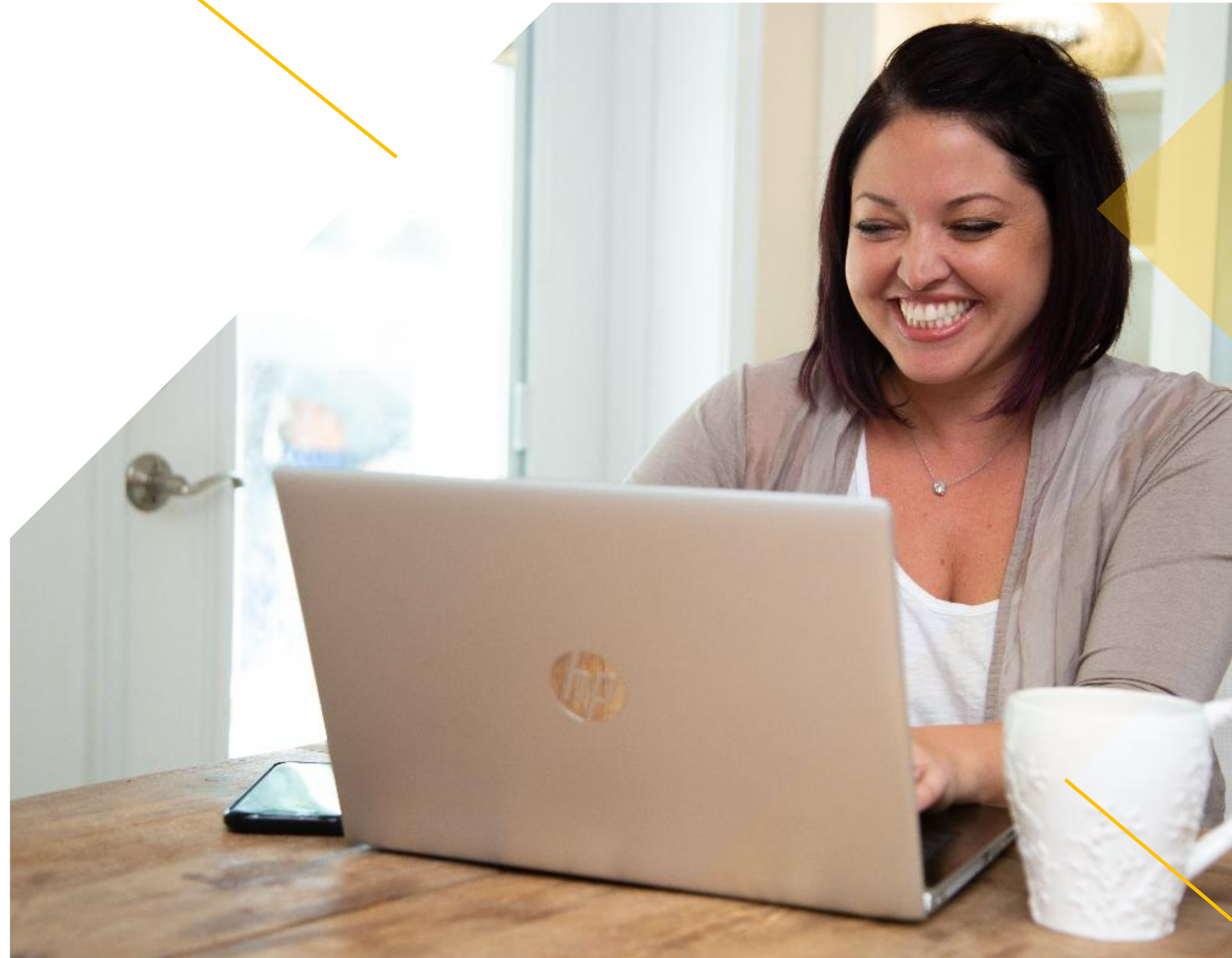


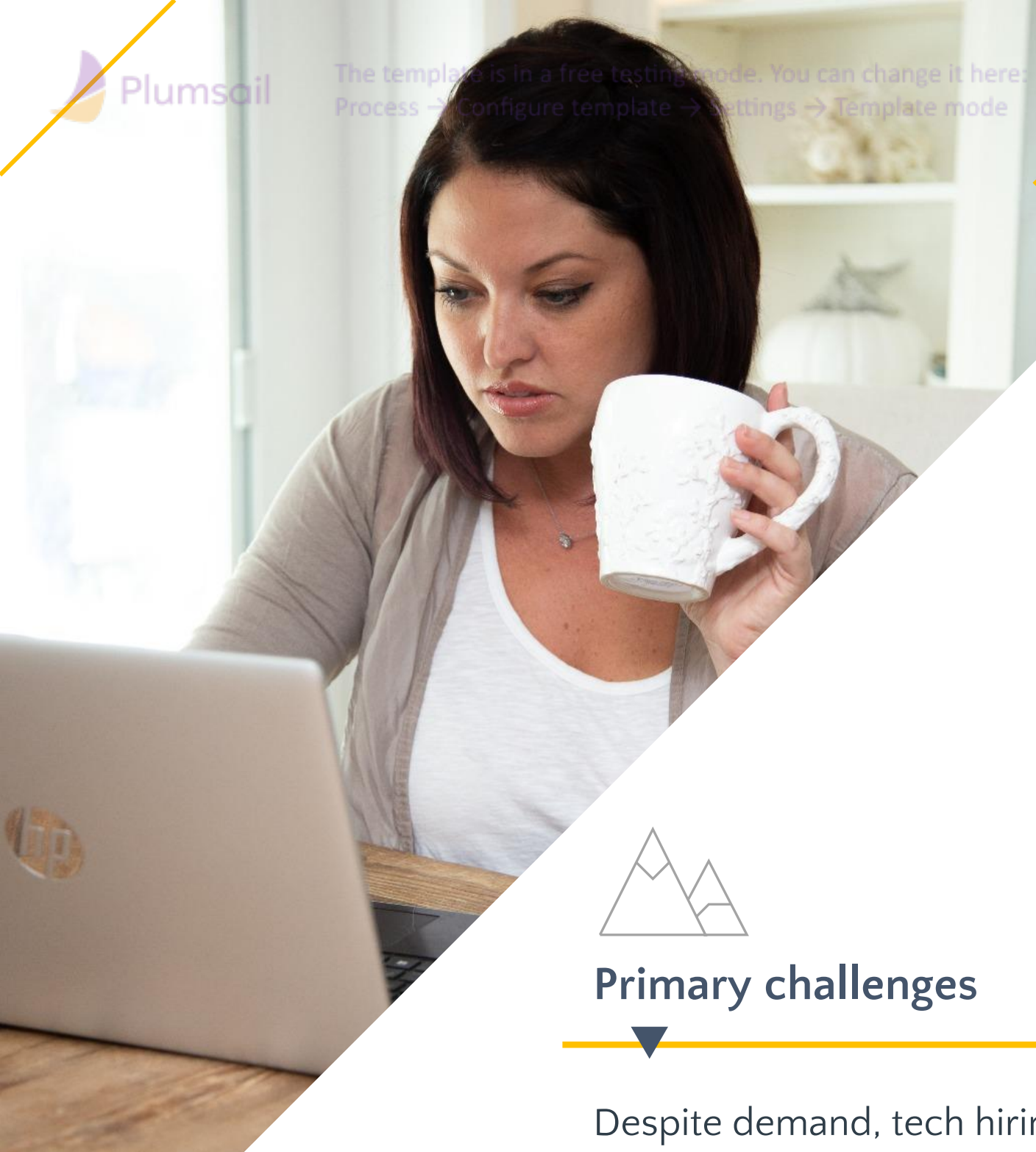
Microsoft Partner

We've re-engineered the tech talent hiring process end-to-end, replacing CV guesswork with data-driven precision in the consideration of actual skills and personality traits.

Great hires. Every time.

9/24/2025 1:00:00 AM





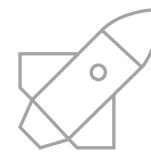
process end-to-end, replacing CV guesswork with data-driven precision in the consideration of actual skills and personality traits.

Atalef makes tech hiring so easy and fun that it feels like leisurely scrolling on your device — except at the end, you actually land the perfect tech professional for your setup, required skillset and company culture.



Primary challenges

Despite demand, tech hiring is still broken, and finding truly qualified tech candidates is a challenge.



Ideal solution

AI That Gets It: No more keyword-stuffing. Our AI understands what makes a great hire and focuses on real skills, personality, and preferences instead of CVs.



Desired outcomes

Increase profile to conversion rate to at least 10%, increase talent engagement by up to 20%, cut time-to-hire by 50%, and reduce sourcing and screening costs by up to 30%.

Great hires. Every time.

Atalef helps companies identify tech talent through expert sourcing, rigorous but fast assessments, our promise of valid data, and our proprietary AI powered DeepMatch™ algorithm — which sifts through hundreds of applicants to pinpoint the perfect hire.

Make better hires.

Our integrated hiring intelligence platform goes end to end to provide precision.

CV-less Profiles

Candidate profiles are generated from hard and soft skill data, eliminating first-impression bias and poorly written CVs.

Customer centricity

Partnering with Microsoft allows a cohesive approach to the customer.

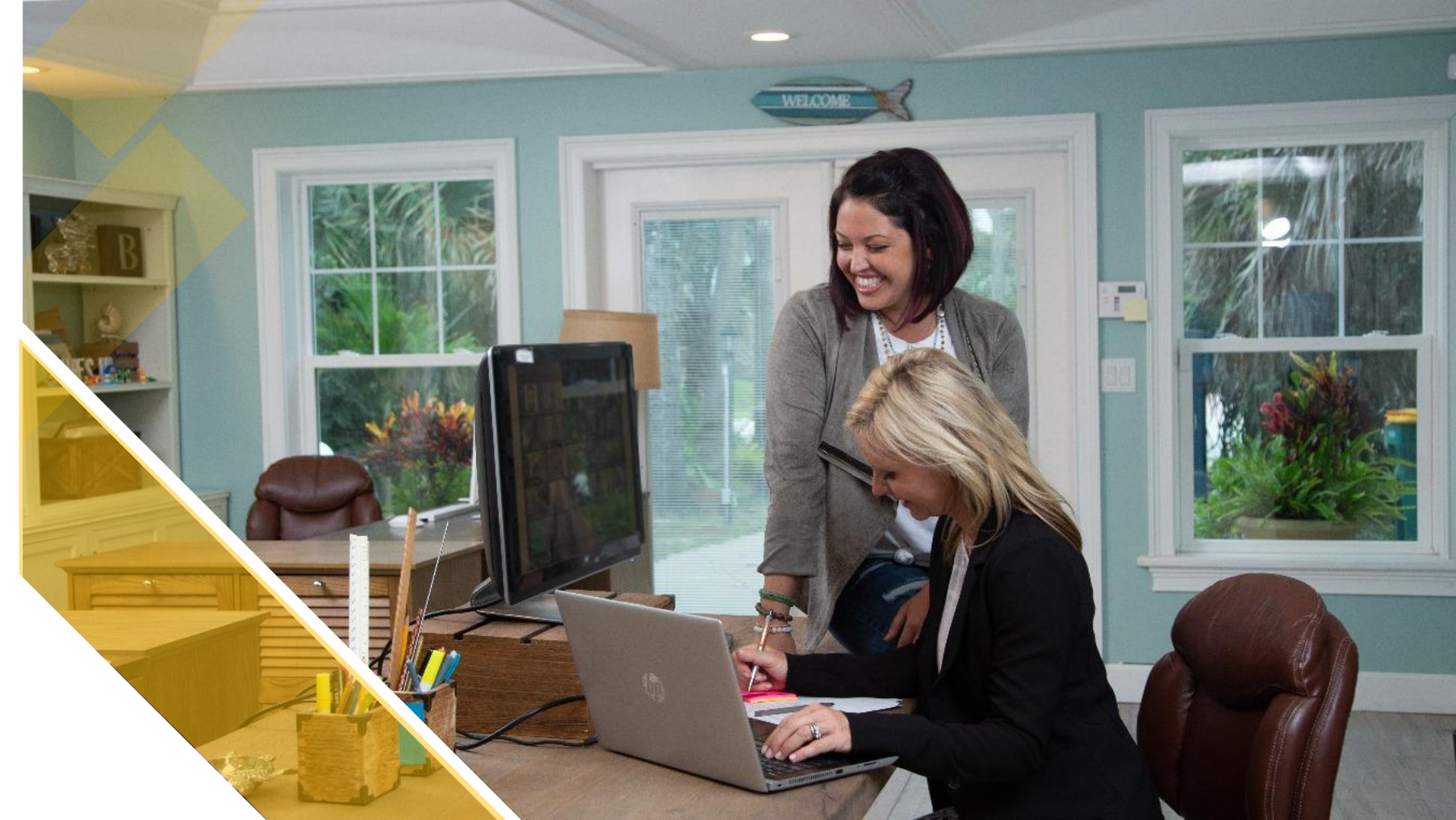




The template is in a free testing mode. You can change it here:
Process → Configure template → Settings → Template mode

Atalef, Atalef AI, and Microsoft Azure

Running on Microsoft Azure allows Atalef to meet the highest industry standards



Unmatched Security

Microsoft invest more than +1B in security. By running on Microsoft Azure - you're safe with us.

Compliance at the core

Microsoft Azure is most compliant cloud when it comes to certifications. It helps Atalef meet industry standards.

Unparalleled elasticity

Microsoft Azure services bring Atalef the ability to scale and meet customer demand anytime. Customer doesn't have to worry about downtime.



Customer success: Filuet Group success:

As an old-economy company driven into digital transformation to compete in the new tech-driven economy, Atalef has helped us transition into the merits of HR Tech and overcome the agony of taking biased decisions.

► Simple

Atalef makes it as easy as 1-2-3.

► Smooth

Atalef ensures great customer experience.

► Safe

Atalef is developing according to security best practices.



Contact Us !

[Get a free trial](#)

Call for more information: +35799554665

Ask a question via email: pavlos@atalef.ai

[Learn more](#)



Microsoft Partner