



Do what matters

# OBIE to Power BI Modernization

Powered By Skywalker  
Together, let's imagine what's possible...

# Executive Summary

In the face of a fragmented Business Intelligence (BI) landscape, Avanade, introduces a revolutionary AI-led migration approach. This approach leverages the Avanade AIM – AI Powered Migration Platform, harnessing Azure’s suite of services, reducing costs by over 60% and simplifying complex migration processes.

This isn’t just about switching tools. It’s a strategic shift towards a data-centric and AI-driven future. Avanade can help unlock unparalleled benefits with Power BI, including unifying self-service and enterprise BI, accelerating insights with AI, and democratizing access to data.

Avanade’s dynamic and scalable approach supports you at every stage of your data transformation journey. From automated assessments and optimization Pilots to building repeatable solutions and scaling, we’re with you every step of the way.

The use of Avanade’s AI-led approach brings unprecedented efficiencies and velocity to migration, delivering incremental business value. A wave-based approach enables delivery of incremental business value, optimizing efficiency and velocity. A comprehensive User Training and user communications plan builds confidence in the migration plan and facilitates on-time completion of acceptance tests and report adoption.

This paper explores the strategic move of migrating from OBIE to Power BI with Avanade, a testament to forward and innovative thinking, assisting clients to adapt, adopt and scale their analytical strategies.

**“The goal is to turn data into information, and information into insight.”**

**- Carly Fiorina**

# Avanade is the global market leader in building innovative Microsoft solutions

As a joint venture, formed in 2000 by Accenture and Microsoft, Avanade brings the best in Microsoft capabilities. With unique industry insights, unrivaled expertise and breadth of services, our 60,000 people do what matters for our clients and their customers every day.



**60,000**

Skilled and diverse professionals – 29% of whom are women



**60,000+**

Microsoft certifications, more than any other partner



**82**

Locations across **26** countries



**10,000**

Projects with **4,000+** global clients since inception



# About Avanade – Our Power BI capability



**5775+**  
Power BI skilled professionals





**1078+**  
Microsoft certified Power BI professionals including global delivery network

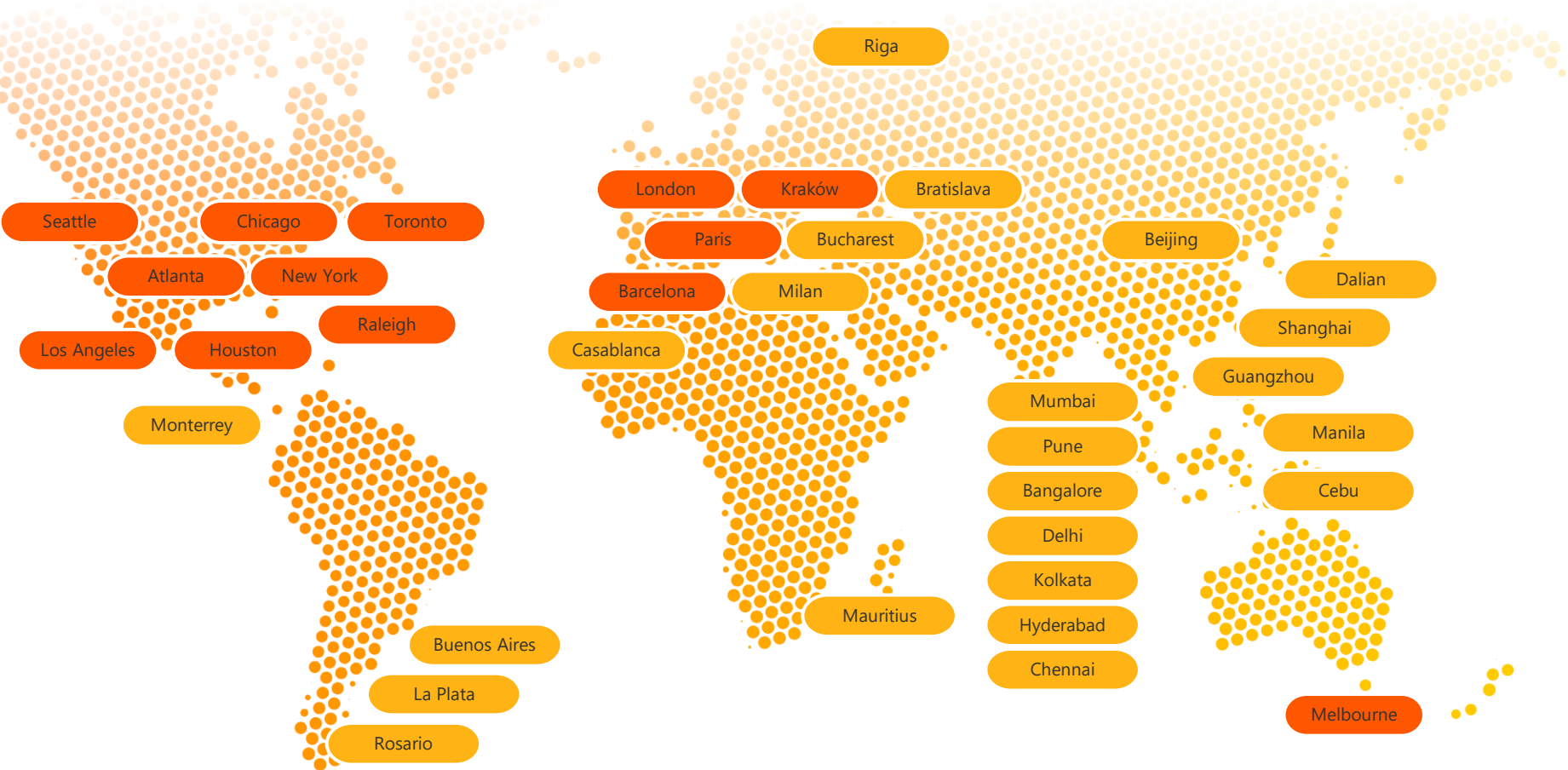


**600+**  
Projects delivered using Power BI

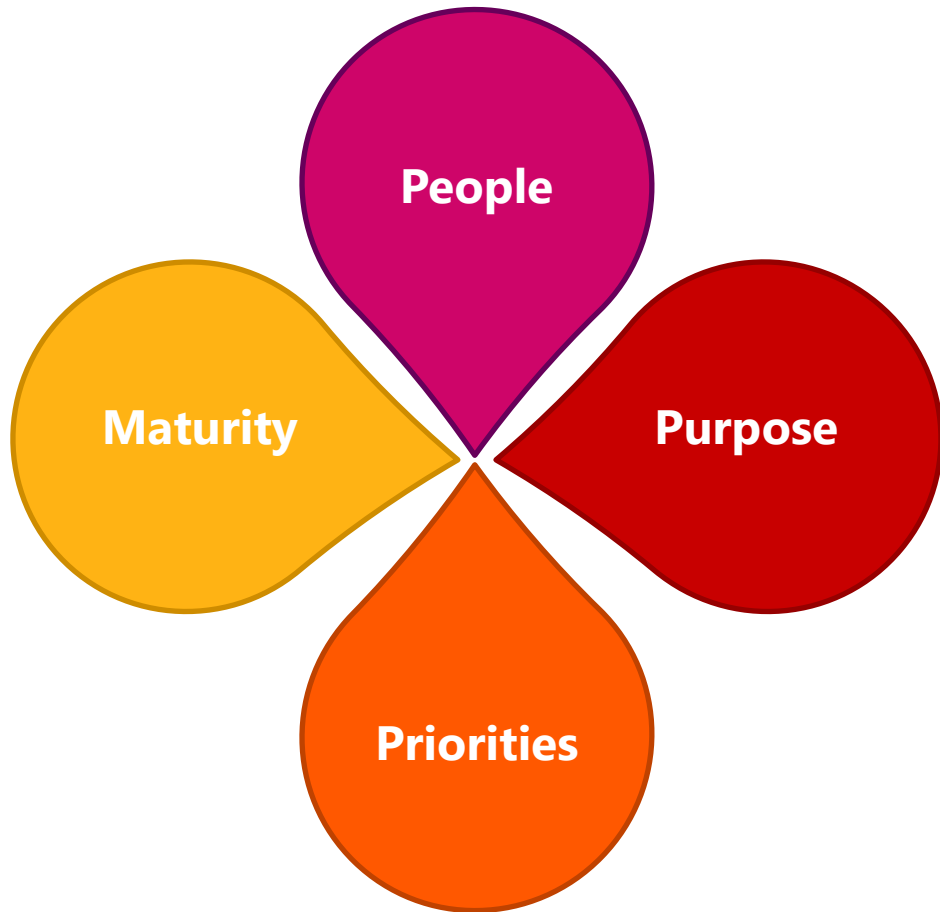


**350+**  
Clients across the globe

 Digital Innovation Studio  
 Advanced Technology Center



# Why organizations have multiple BI systems



There are many reasons why organizations might have a fragmented BI estate, consisting of multiple overlapping tools:

<b>People</b>	<ul style="list-style-type: none"> <li>• Leadership, or lack of, that allowed a fragmented BI estate</li> <li>• Individual personal preferences within departments and teams</li> <li>• A lack or lateness of implementing complete internal governance</li> <li>• Independence with a non-federated IT operating model</li> </ul>
<b>Maturity</b>	<ul style="list-style-type: none"> <li>• Quality and completeness of an organization-wide data strategy.</li> <li>• Non-alignment of IT strategy to organizational strategic needs.</li> <li>• Budget, or lack of in certain departments, leads to cheaper or lower quality tools in some entities or departments.</li> <li>• The availability of a single complete tool that meets all needs</li> </ul>
<b>Priorities</b>	<ul style="list-style-type: none"> <li>• One team, or department, needing to go it alone initially</li> <li>• Mergers and acquisitions of end customers who had different BI estates prior</li> <li>• Project specific needs</li> </ul>
<b>Purpose</b>	<ul style="list-style-type: none"> <li>• The capabilities of one carefully selected BI tool has not kept up with user needs and wants over time</li> <li>• Certain capabilities available from a BI tool are not as strong as other BI tools</li> <li>• Mergers and acquisitions between BI tool providers themselves has changed the end-customer internal estates</li> <li>• Certain non-BI core technology providers (e.g., ERP) having bolt-on BI offerings that have extended across an organization over time</li> </ul>

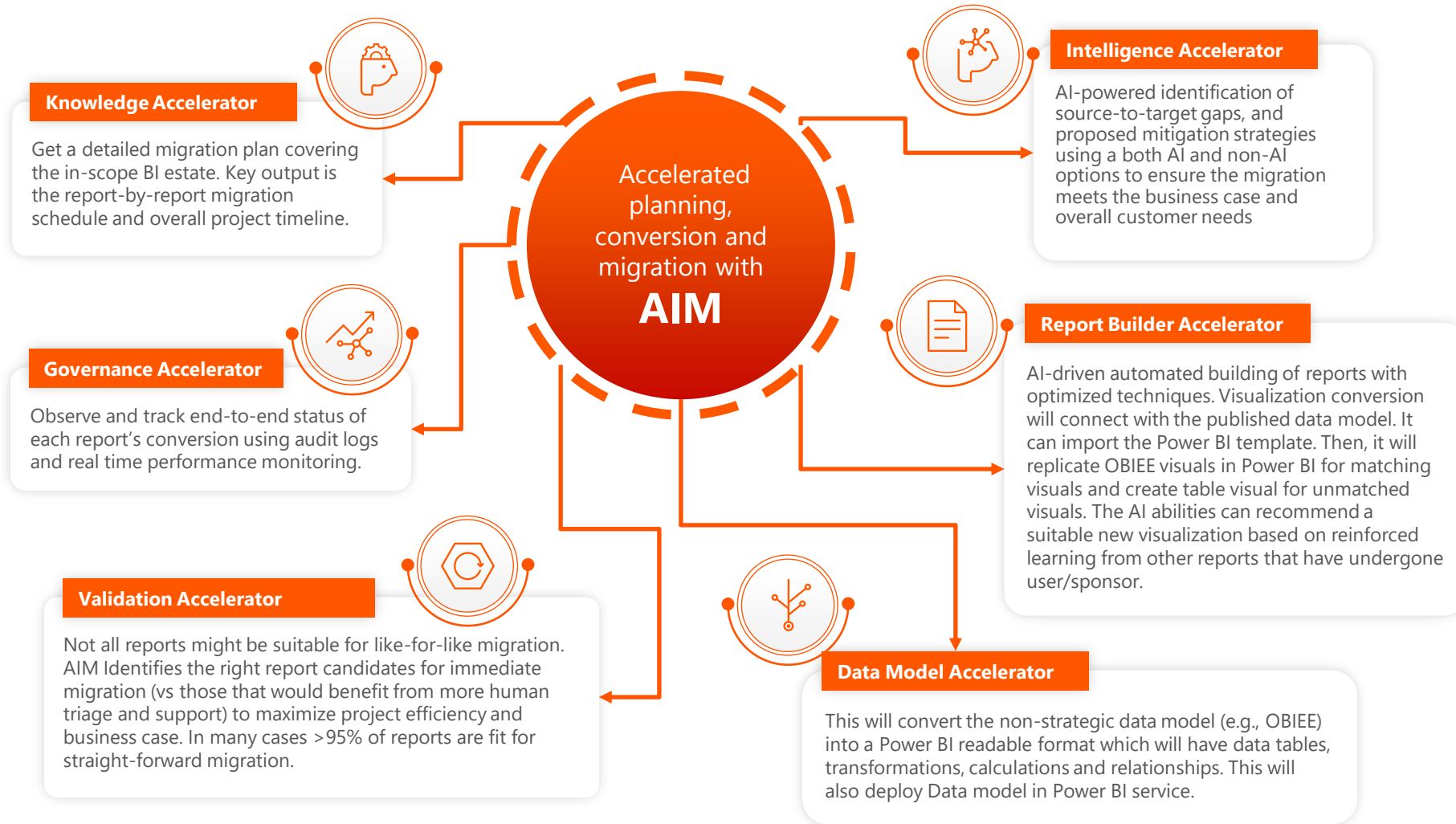


# Why consolidate to Power BI?

Microsoft Power BI continues to be ranked and rated by technology analysts and customers as the leading business intelligence tool available on the market today. While its technical capabilities alone provide a compelling reason to choose Power BI, here are some additional reasons why organizations are seeking to consolidate their BI estates to this single tool:

<b>Business Case</b>	<ul style="list-style-type: none"><li>• Power BI can be up to 7x cheaper than other BI tools.</li><li>• Investment to modernize from a fragmented BI estate to a single Power BI could be available from Microsoft and Avanade to expedite the business case's realization.</li></ul>
<b>Microsoft AI</b>	<ul style="list-style-type: none"><li>• The inclusion of Artificial Intelligence Copilots into Power BI aids users in significant ways:<ul style="list-style-type: none"><li>• New low-code/ no-code interfaces open-up the platform to be used by non-technical staff, who can be guided and quickly learn how to use Power BI.</li><li>• Users can complete analytics by interacting in over 100 human languages.</li><li>• Interoperability with Microsoft Purview (Data &amp; AI Governance) and Microsoft Security.</li></ul></li><li>• Power BI benefits from the interoperability of Microsoft's continued AI investments and suite.</li></ul>
<b>Microsoft Fabric</b>	<ul style="list-style-type: none"><li>• This next-generation intelligent data platform incorporates Power BI as a workload, meaning a seamless experience is enjoyed and available with no hidden costs or IT work.</li><li>• The OneLake foundation of Microsoft Fabric enables data silo's to be eliminated with strict data governance and controls, which allows Power BI to be used across all allowed organizational data.</li><li>• Low-code interfaces help users build applications and automations that can drive business processes based on insights found in Microsoft Fabric and reporting delivered in Power BI.</li></ul>
<b>People</b>	<ul style="list-style-type: none"><li>• This next-generation intelligent data platform incorporates Power BI as a workload, meaning a seamless experience is enjoyed and available with no hidden costs or IT work.</li><li>• The OneLake foundation of Microsoft Fabric enables data silo's to be eliminated with strict data governance and controls, which allows Power BI to be used across all allowed organizational data.</li><li>• Low-code interfaces help users build applications and automations that can drive business processes based on insights found in Microsoft Fabric and reporting delivered in Power BI.</li></ul>

# AI-driven migration ('AIM')



## Other AIM Features

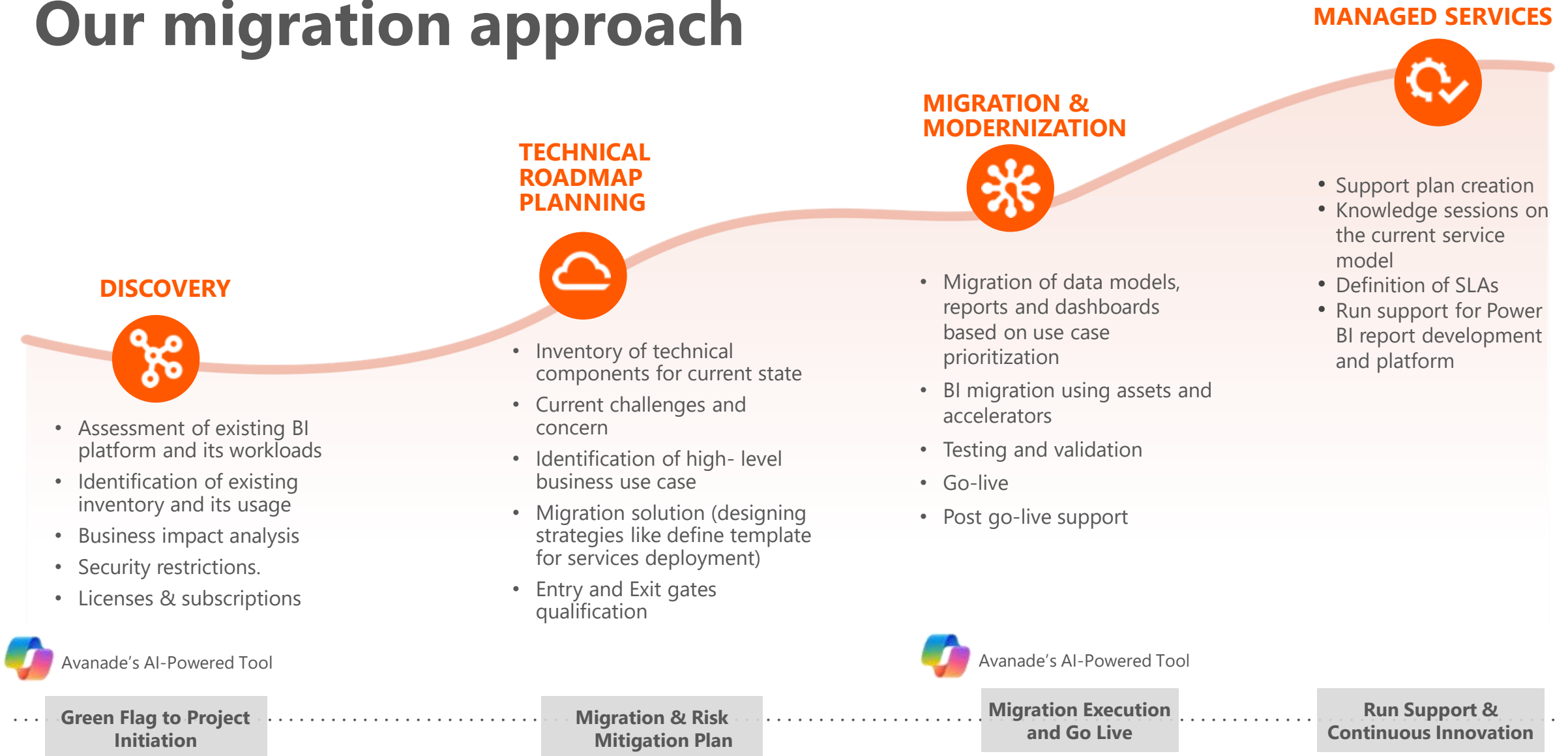


- Simple user interface where files (e.g., OBIEE .tbw) are uploaded or 'dragged and dropped', which starts the migration cycle of assessment, testing conversion and report production
- Intelligent data source mapping to design and develop the ideal and succinct new data model
- Individual report complexity generator fine tuned based on AIM's standards
- FinOps insight on the estimated Azure AI costs to complete the complete migration. This helps with any Avanade/ Microsoft investment requests.
- Unlimited report throughput, but we recommend customers to limit to 500 reports per month to prevent UAT overload

**All embedded into one unique tool**



# Our migration approach





# How To Get Started with your journey to Power BI?



## Next Steps



### BI Automated Assessment

Using a hybrid approach to analyze the current OBIE landscape and understand user needs and pain points – **Using AIM**

**4-8 weeks**



### BI Optimization Pilot and Automation MVP

Introduce AIM to the BI Ecosystem and begin the automation conversion pilot MVP journey – **Automation Code Conversion Tool**

**2-3 months**



### Build Repeatable Solutions and Scale

Scale AIM's features and optimize the BI landscape by building decision intelligent models – **Proactive BI COE**

**6 mo - 2 yrs.**

# Key benefits & outcomes: OBIE to Power BI



## Improved efficiency up to 50 – 60%\*

Potential to deliver quality results powered by the state-of-the-art framework of copilot framework



## Cost saving by 15-20 %

Embedded with latest technologies of Prompt synthesis and dynamic LLM its expected to deliver in low cost



## Automated fine tuning

It offers a platform for automated refinement and validation of prompts and their outputs, streamlining the onboarding process



## Flexible deployment

It consists of various assets that can be tailored and deployed according to the specific requirements of customers



## Continuous improvement

Continuous enhancement, leading to ongoing improvement over time with ability to learn from user feedback

# Get started today

An assessment of your analytics estate is a great way to initiate or further your data journey, helping to ensure that your investment in data modernization with Azure delivers optimal business value and benefit. To learn more or to engage with an Avanade solution architect, contact us today.

## North America

Seattle

America@avanade.com

## South America

Sao Paulo

AvanadeBrasil@avanade.com

## Asia-Pacific

Australia

AsiaPac@avanade.com

## Europe

London

Europe@avanade.com