



# **Eliminating wasted resources in building operations**



CAPABILITY STATEMENT | AVANI SOLUTIONS



The simpler it is  
to solve complex  
problems, the greater  
the impact will be.



Unlock a **greater impact**



## Contents

Eliminating wasted resources	4
The Avani Impact	6
A look at the numbers	8
The Avani Way	10
Access the right data	
Change performance	
Track your impact	
Our team	12

**QUESTIONS**  
info@avanisolutions.com  
152 St Georges Terrace  
Perth WA 6000  
1300 156 391

**ONLINE**  
www.avanisolutions.com



# The Avani Impact

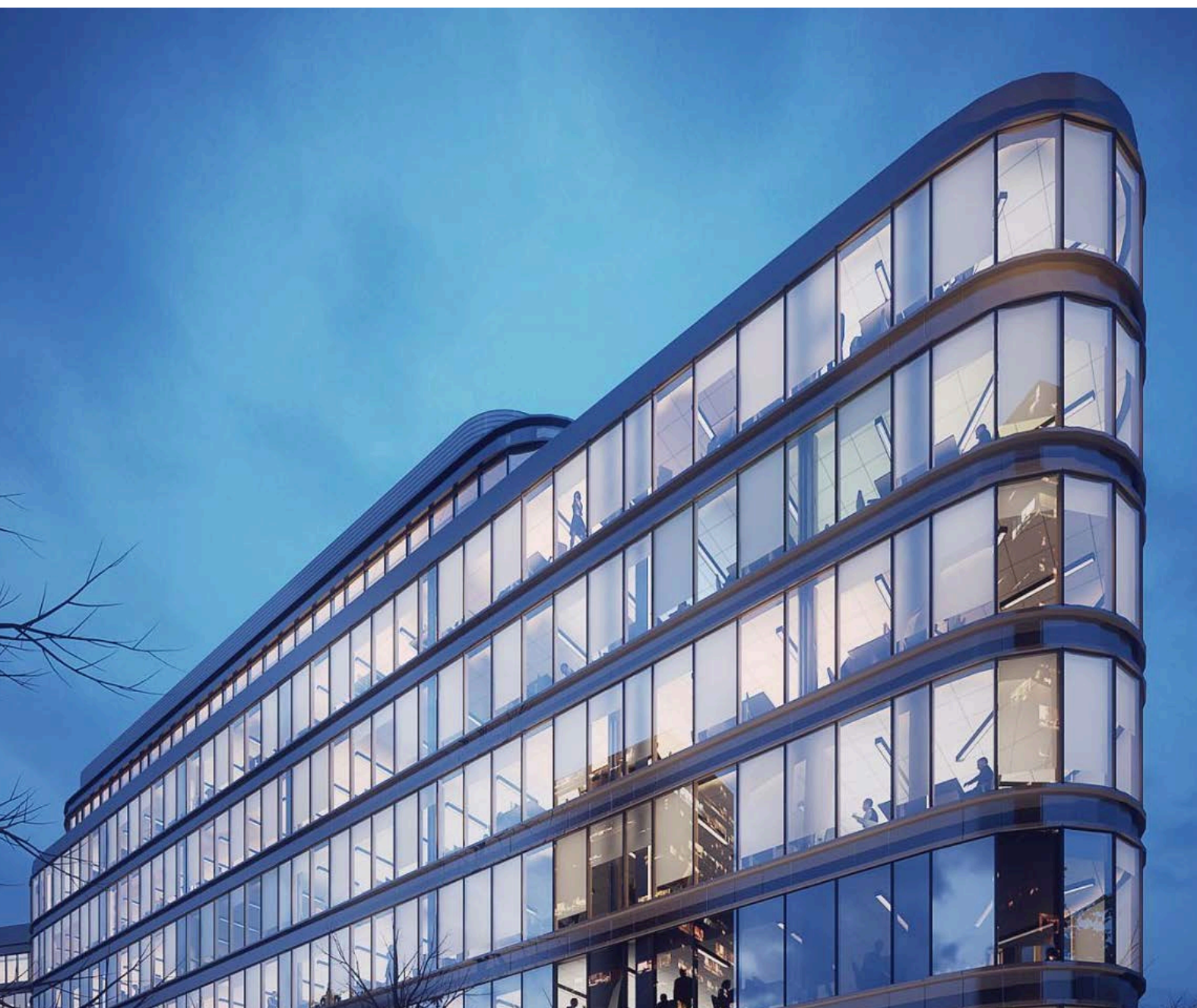
At Avani, we believe the simpler it is to solve complex problems, the greater the impact will be. For the last twenty years, we've earned a reputation for embracing complexity where others shy away and delivering the simplicity clients seek to unlock a greater impact.

We measure our impact in many ways, but ultimately, it's about empowering organisations everywhere to focus on their core business, delivering value for their customers, clients, stakeholders, and investors; without worrying about the cost of wasted resources and unnecessary expenditures.

Avani delivers the tangible and measurable savings businesses need to drive real change for their people, profits, and planet.



# Eliminating **wasted resources**



Avani eliminates wasted resources in building operations. This means that for owners, tenants, and managers of commercial real estate portfolios, Avani can identify and eliminate wastage in:



## **ENERGY CONSUMPTION**

Avani clients have achieved as much as 35% reduction in portfolio-wide energy consumption.



## **CARBON EMISSIONS**

Avani adapts energy consumption in response to the real-time carbon intensity of the grid to drive reductions in emissions.



## **TIME & LABOUR**

Avani's read-and-write technology drives automated workflows that remove time-consuming manual processes.



## **WATER, WASTE, GAS & MORE**

Avani consolidates data from all building systems to ensure total operational performance across your property portfolio.



# Our track **record**



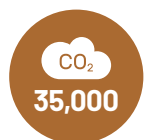
## SMARTER ENERGY SAVINGS

By eliminating wasted resources, Avani has helped building owners and tenants save more than \$10 million in energy consumption since 2019 alone.



## ULTIMATE EFFICIENCY – ALWAYS

Avani optimises building systems to improve performance and ensure 24/7 efficiency. Our automated tools cut down valuable human resources, freeing up **hundreds of hours** for the tasks that matter most.



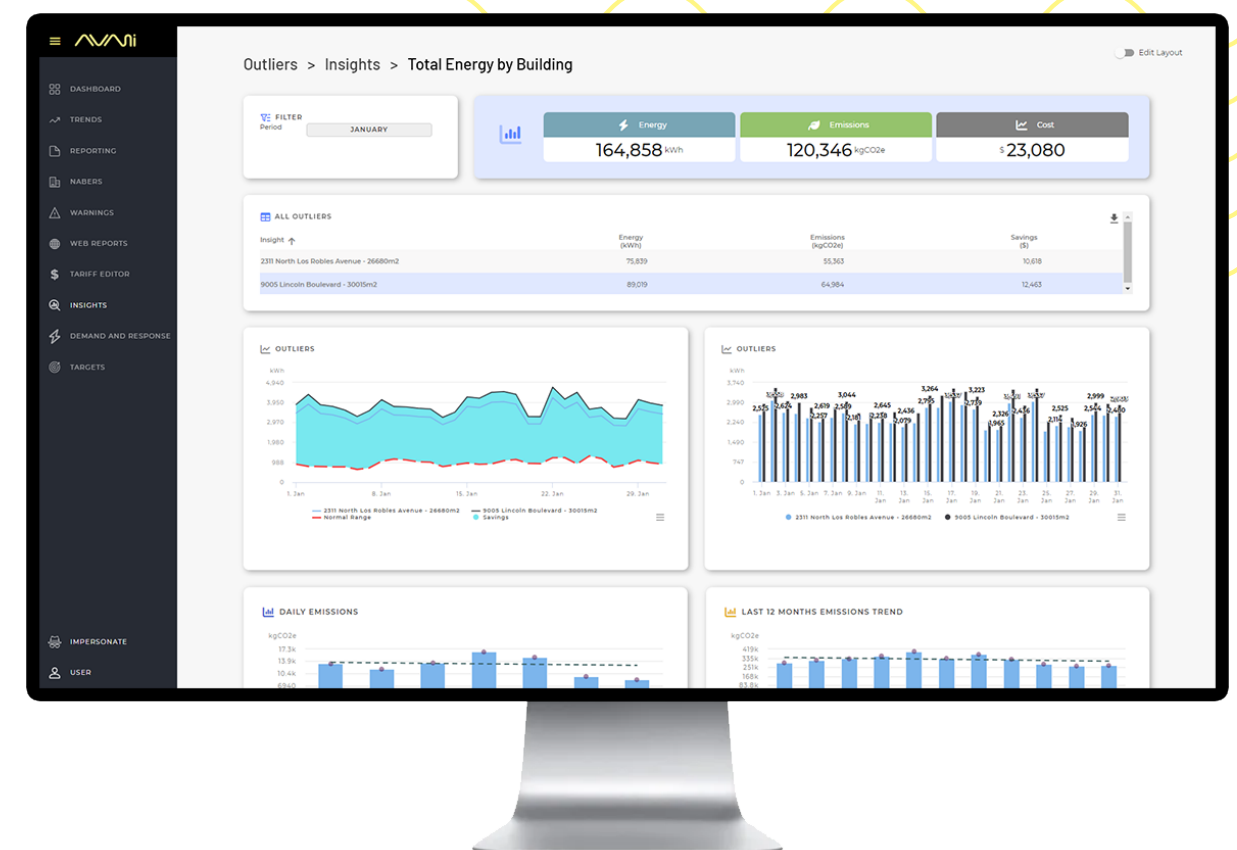
## MORE SUSTAINABLE BUILDINGS

Avani has saved **~35,000 tonnes of carbon emissions** in the last five years, the equivalent of driving more than 1,500 cars for five years straight.



## BEYOND ENERGY AND CARBON

Avani goes beyond traditional energy and carbon targets, streamlining metrics across water, waste, gas, and more. By connecting to countless internal and external systems, Avani has **helped hundreds of buildings** identify and eliminate wasted resources across their operations.



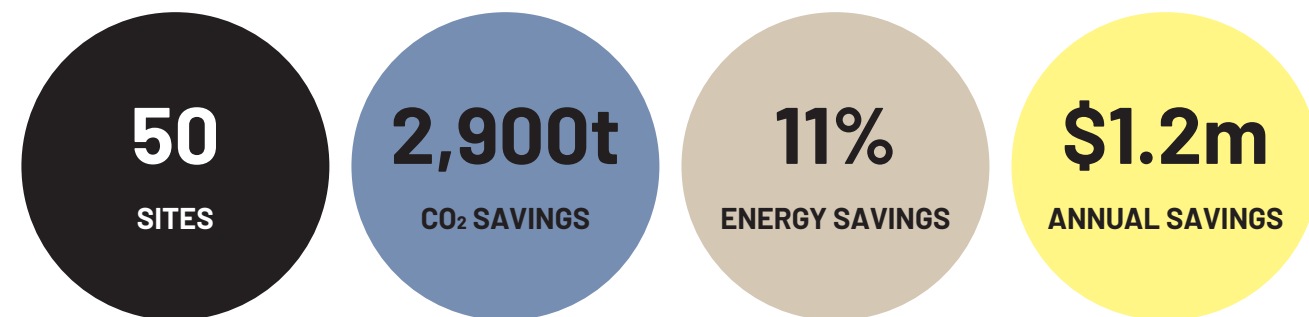




## Keeping cool at HOYTS

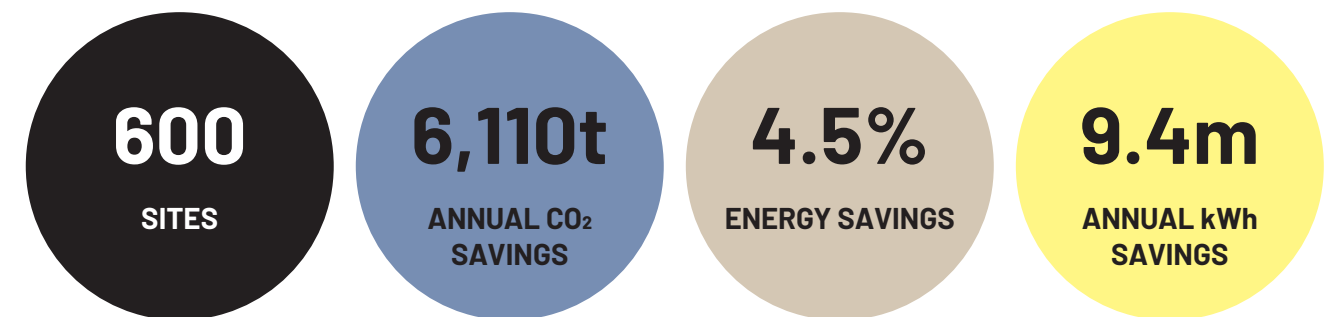


## ALDI's greater impact



Avani integrated multiple systems from all 50 HOYTS cinemas across Australia and New Zealand.

By connecting directly to the HOYTS ticketing system, Avani made it possible to automate environmental conditions based on customer demand — saving valuable energy costs, improving cinema comfort and reducing customer complaints.



Avani's advanced software solution was deployed across ALDI's Australian grocery stores, enabling real-time energy insights and automating carbon tracking, temperature monitoring, and maintenance processes.

Avani outperformed all KPIs during the initial roll out and is now in the process of optimising all 600 stores nationwide.



# The Avani Way: **ACT**

Avani's three-step "ACT" methodology—Access, Change, Track—empowers building operators to drive impactful change by capturing real-time, high-quality data from every building system, providing comprehensive portfolio visibility.

With actionable insights and automated controls, Avani enables swift adjustments to optimise performance, while accurately tracking and report your impact. This streamlined approach allows for efficient, scalable initiatives that maximise results by minimising complexity.

## **1. Access the Right Data**

Real-time data from any system in every building



## **2. Change Performance**

Control and optimise with insights and automation



## **3. Track Your Impact**

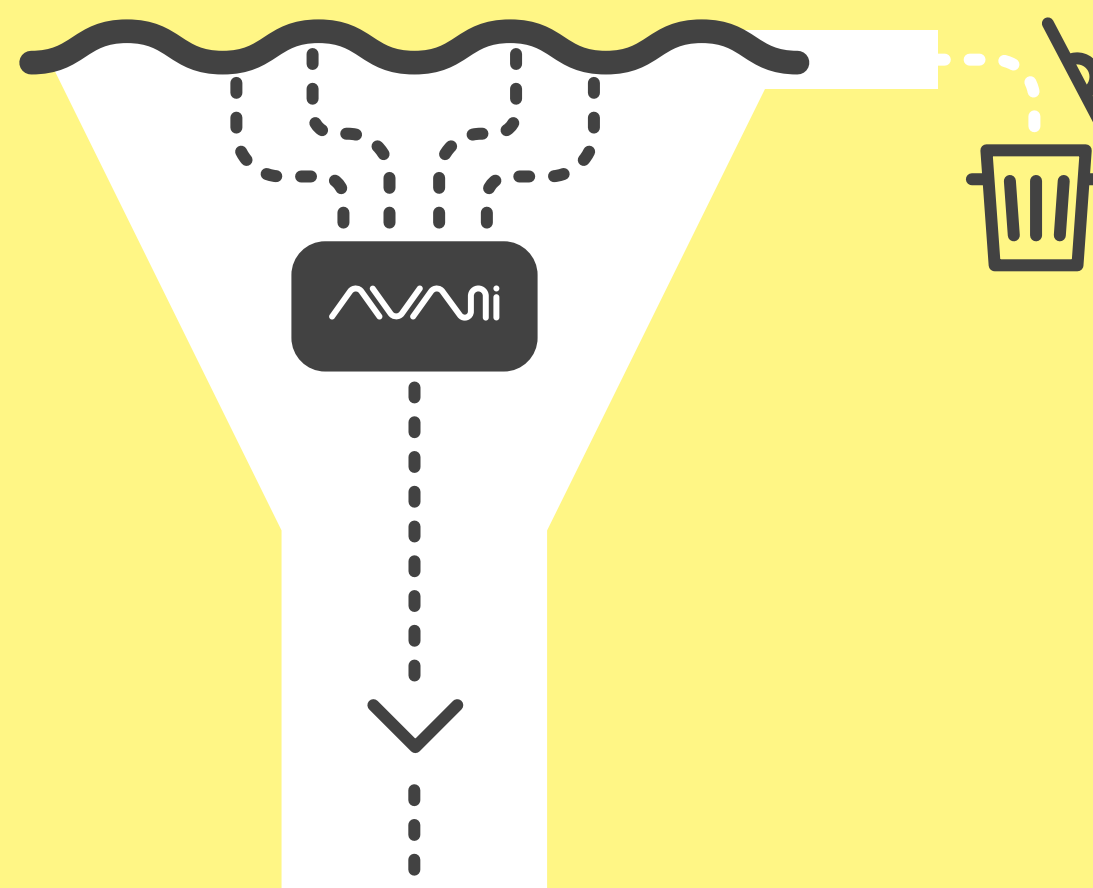
Measure impact with accurate dashboards and reports



Real-time data from any system in all buildings

# Access the right data

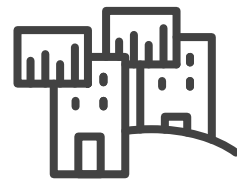
Avani verifies and qualifies the right data from any system across your building portfolio.



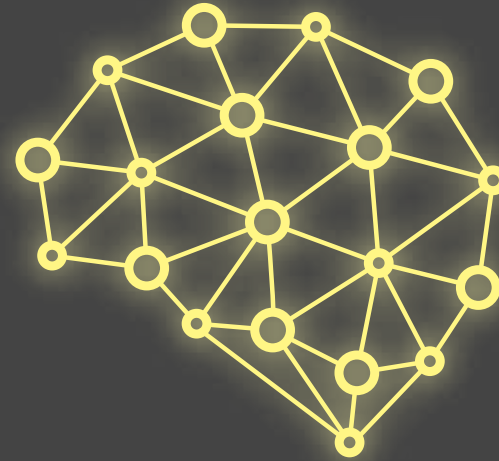




Baseline  
building data



Benchmark building  
comparison



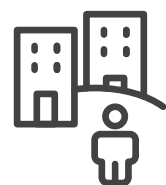
Waste detection  
& notification



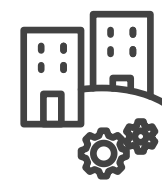
Insights/trends



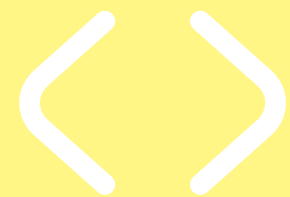
Opportunities



Manual  
corrections



Automated  
workflows



# Change performance

Avani processes the data through advanced algorithms, not just showing the data but enabling the implementation and automation of workflows.





# Track your impact

Avani offers full ownership of your data, putting the power at your fingertips to monitor, track, and measure return on investment and impact.



Implement  
at scale



# Our team of innovators

For over two decades, we've been at the cutting edge of building technology, turning complex operational data into actionable insights and powerful automations.

Our expert team brings passion, precision, and innovation to every project, ensuring our clients achieve their financial, environmental, and operational goals. Our team is here to empower businesses to unlock a greater impact, driving efficiency and sustainability through personalised support and advanced, tailored solutions.



**NICOLETTE MAURY**  
CEO

(NED ABC,  
Ex-CEO Asto (Santander Group),  
Ex-MD Intuit Australia)



**PAUL DEARLOVE**  
Co-Founder

(20+ years Avani)



**GLEN MILLER**  
Head of Technology

(15+ years Avani)





Unlock a **greater impact**

**Get in touch**

**E:** [info@avanisolutions.com](mailto:info@avanisolutions.com)

**P:** 1300 156 391

**W:** [avanisolutions.com](http://avanisolutions.com)

**SYDNEY**

Level 2,  
50 Bridge Street  
Sydney NSW 2000

**PERTH**

Level 32,  
152 St Georges Terrace  
Perth WA 6000