



Eliminating wasted resources in building operations

CAPABILITY STATEMENT | AVANI SOLUTIONS



Contents

Eliminating wasted resources	4
Our track record	5
Client success	6
The Avani Way	8
Access the <i>right</i> data	
Change performance	
Track your impact	
Our team	13



The simpler it is
to solve complex
problems, the greater
the impact will be.

Unlock a **greater impact**

QUESTIONS
info@avanisolutions.com
152 St Georges Terrace
Perth WA 6000
1300 156 391

ONLINE
www.avanisolutions.com

Eliminating wasted resources

Avani eliminates wasted resources in building operations. This means that for owners, tenants, and managers of commercial real estate portfolios, Avani can identify and eliminate wastage in:



ENERGY CONSUMPTION

Avani clients have achieved as much as 35% reduction in portfolio-wide energy consumption.



TIME & LABOUR

Avani's read-and-write technology drives automated workflows that remove time-consuming manual processes.



CARBON EMISSIONS

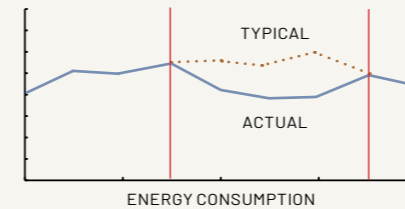
Avani adapts energy consumption in response to the real-time carbon intensity of the grid to drive reductions in emissions.



WATER, WASTE, GAS & MORE

Avani consolidates data from all building systems to ensure total operational performance across your property portfolio.

Our track record

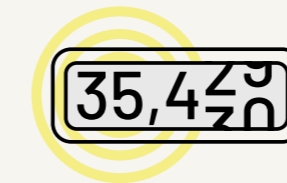


SMARTER ENERGY SAVINGS

By eliminating wasted resources, Avani has helped building owners and tenants save more than **\$10 million** in energy consumption since 2019 alone.

ULTIMATE EFFICIENCY – ALWAYS

Avani optimises building systems to improve performance and ensure 24/7 efficiency. Our automated tools cut down valuable human resources, freeing up **hundreds of hours** for the tasks that matter most.



MORE SUSTAINABLE BUILDINGS

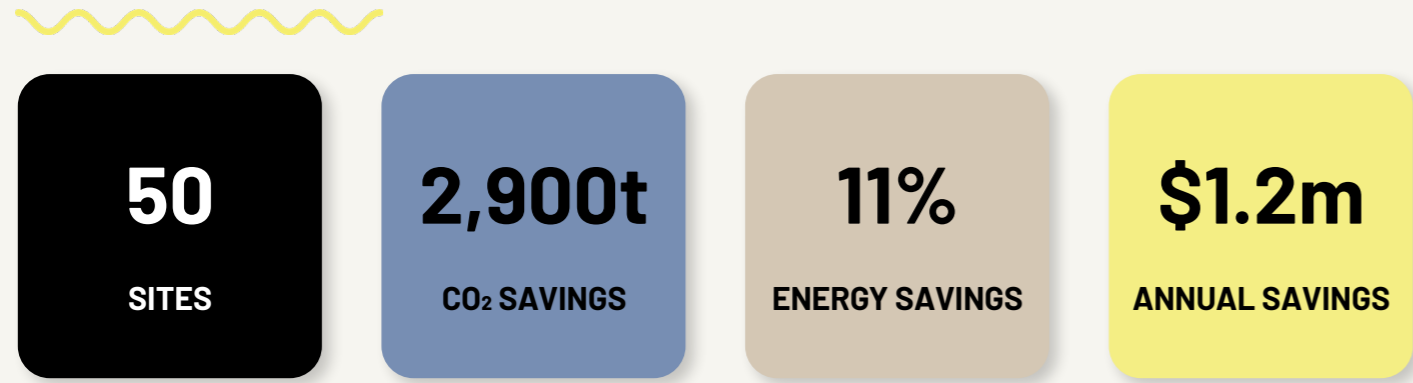
Avani has saved **~35,000 tonnes of carbon emissions** in the last five years, the equivalent of driving more than 1,500 cars for five years straight.

BEYOND ENERGY AND CARBON

Avani goes beyond traditional energy and carbon targets, streamlining metrics across water, waste, gas, and more. By connecting to countless internal and external systems, Avani has **helped hundreds of buildings** identify and eliminate wasted resources across their operations.



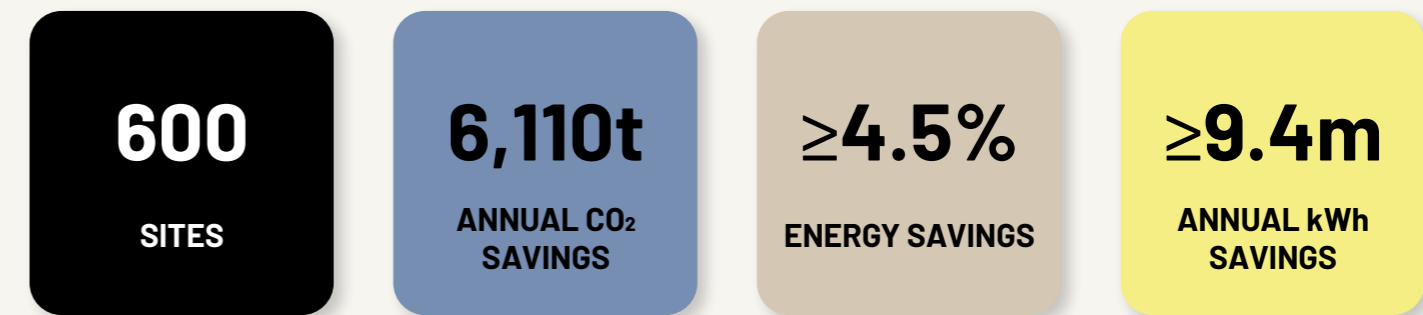
Keeping cool at HOYTS



Avani integrated multiple systems from all 50 HOYTS cinemas across Australia and New Zealand. By connecting directly to the HOYTS ticketing system, Avani made it possible to automate environmental conditions based on customer demand – saving valuable energy costs, improving cinema comfort and reducing customer complaints.



ALDI's greater impact



Avani's advanced software solution was deployed across ALDI's Australian grocery stores, enabling real-time energy insights and automating carbon tracking, temperature monitoring, and maintenance processes.

Avani outperformed all KPIs during the initial roll out and is now in the process of optimising all 600 stores nationwide.

The Avani Way – ACT

Avani's three-step "ACT" methodology—Access, Change, Track—empowers building operators to drive impactful change by capturing real-time, high-quality data from every building system, providing comprehensive portfolio visibility.

With actionable insights and automated controls, Avani enables swift adjustments to optimise performance, while accurately tracking and report your impact. This streamlined approach allows for efficient, scalable initiatives that maximise results by minimising complexity.



Access the *Right* Data

Real-time data from any system in every building



Change Performance

Control and optimise with insights and automation



Track Your Impact

Measure impact with accurate dashboards and reports

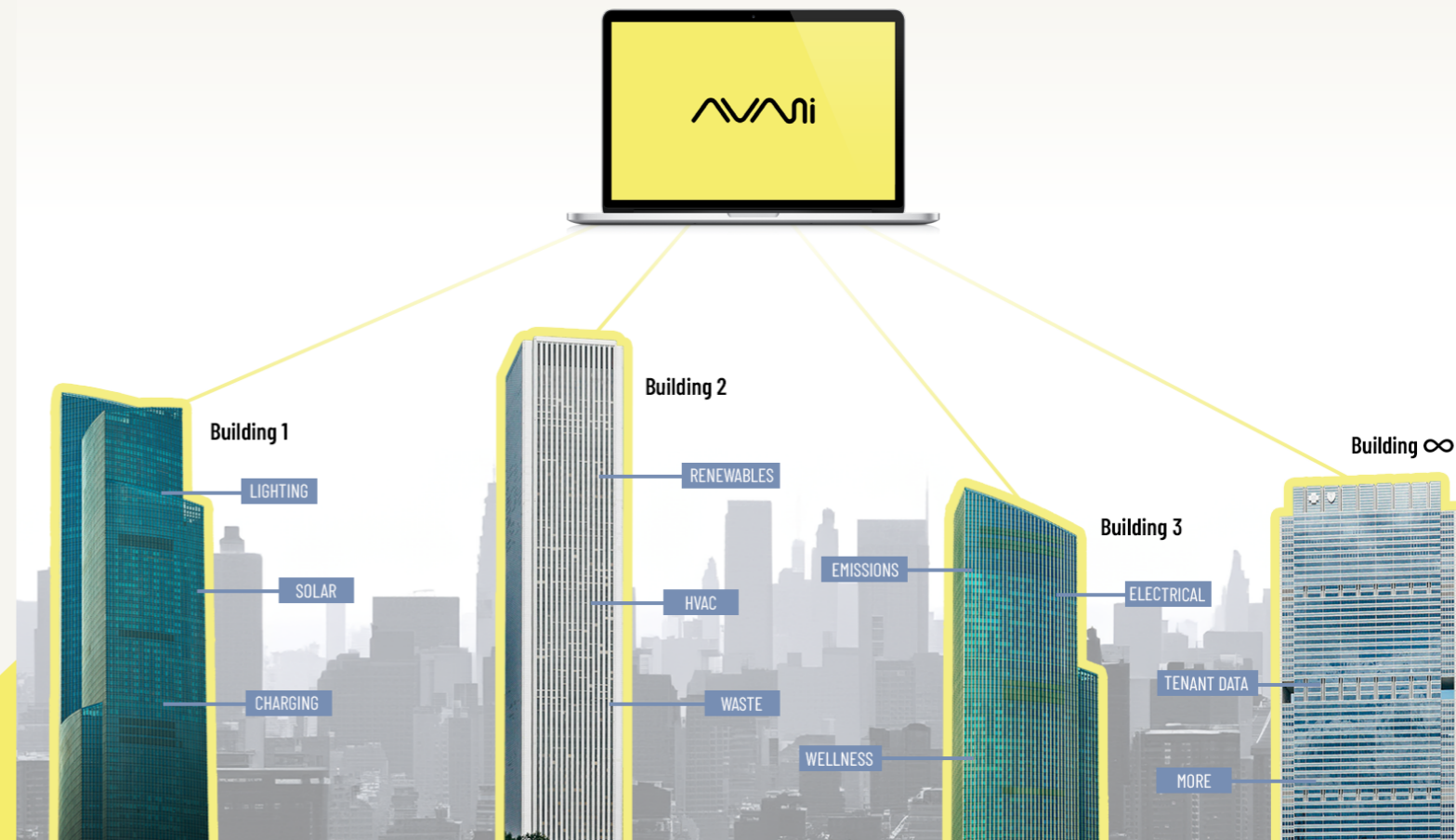


1. Access the *Right* Data

Accessing the right data from buildings involves integration with a range of internal and external systems to capture essential information and consolidate data across an entire portfolio into a single, unified source of truth.

By standardising diverse systems and datasets and connecting to live grid data, carbon intensity metrics, and external business systems, Avani ensures data accuracy, quality, and alignment with business goals.

MOST SOLUTIONS	AVANI
Some data	The <i>right</i> data
Historical data	Real-time and historical data
Unvalidated or unreliable	100% Validated and standardised
Single or limited systems	Any system, anywhere
One part of the picture	The whole picture
Single-building access and visibility	Portfolio-wide access and visibility



2. Change performance

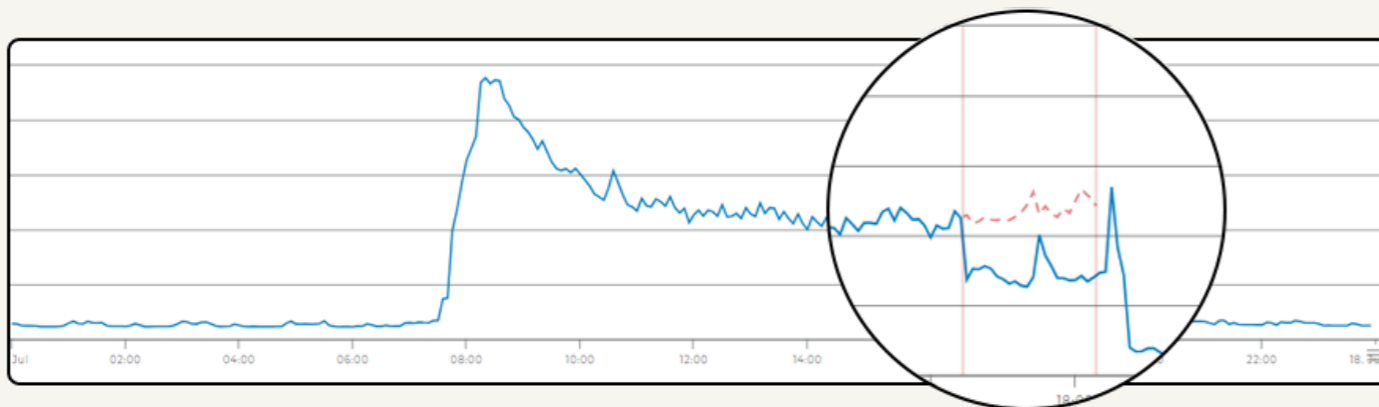
Identifying wasted resources

Avani takes the data it has consolidated and runs it through a series of advanced algorithms and modules to identify a wide range of opportunities for waste elimination across your portfolio.

By leveraging benchmarking algorithms, purpose-built waste detection, and emissions- and demand-response insights, Avani can pinpoint inefficiencies and deviations from typical consumption.

This targeted approach not only helps reduce costs and enhance sustainability but also improves overall building performance, delivering greater value and impact for building managers and tenants alike.

Identification and elimination



A real example of targeted energy reduction based on opportunities identified by Avani.

Red line: Expected energy consumption without Avani.

Blue line: Actual energy consumption with Avani's real-time adjustments implemented.

Result: 24% Energy reduction during response window.

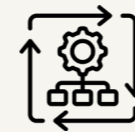
Implementing and automating change

ACTIONABLE INSIGHTS

Avani's waste identification strategies deliver live insights directly to management and operations staff with targeted recommendations for manual intervention and strategies for change. These insights are continuously improved and tailored as Avani's algorithms gather new data.

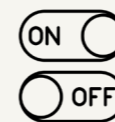
AUTOMATED WORKFLOWS

AUTOMATIC ENERGY REDUCTION



- Avani's waste reduction workflows automatically change underlying building systems to reduce waste.
- Initiatives and focused actions determine if new idea has potential.
- Proven actions are deployed centrally to all sites with ease.

DEMAND AND EMISSIONS RESPONSE



- Workflows and actions designed to respond to emissions and demand rankings to lower or shift energy when required.
- Avani automatically adjusts operational performance, portfolio wide, to actively deliver on energy consumption and carbon emissions targets.

PROTECTION LOGIC AND RULES

All of Avani's algorithms and automated actions are governed by a stringent set of fail-safe rules and protection logic. Before any workflow is run, Avani checks that all conditions and rules are met. If conditions change during an automated action, Avani will adjust, reverse, or abort, according to the protection logic.

These added layers of protection enable owners and operators to trial and run waste elimination initiatives with absolute peace of mind.



3. Track your impact

Reliable data is essential for meeting mandatory disclosure and compliance requirements, ensuring that reporting is accurate, transparent, and aligned with regulatory standards. Avani's data, consolidated across your entire portfolio, supports these needs by acting as a single, reliable source of truth.

Avani makes it easy to calculate return on investment and demonstrate your impact, providing tailored insights for stakeholders at every level—from the C-suite and portfolio managers to facilities staff, tenants, investors, and more.



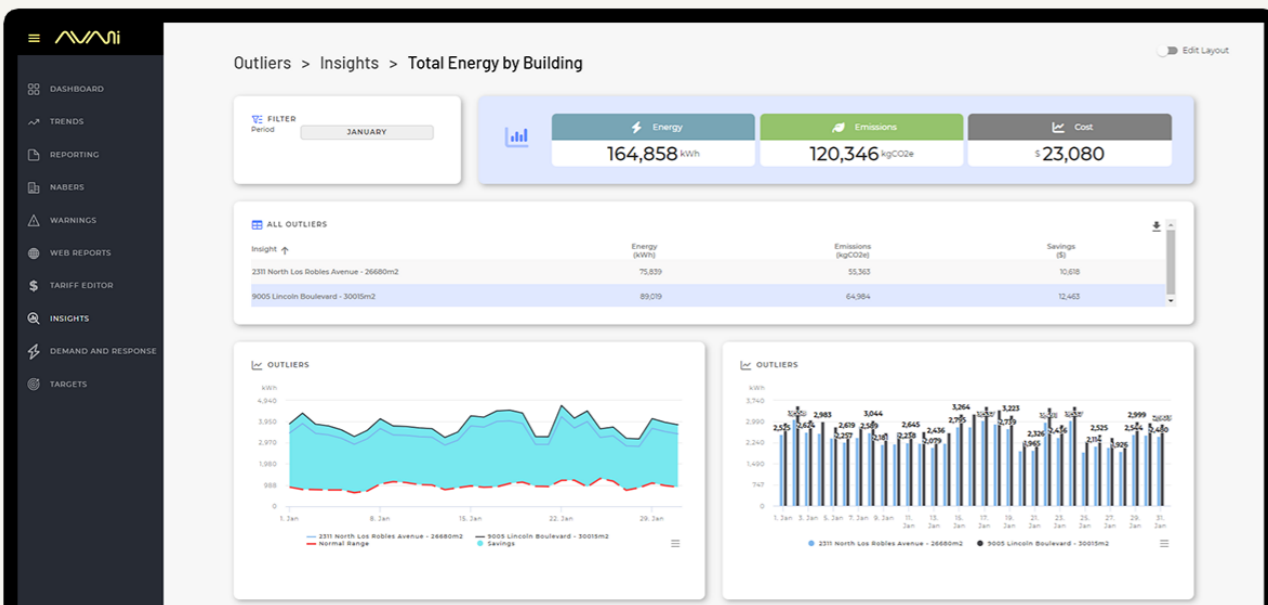
Measure real-time performance and improvement of actions and initiatives against historical trends and benchmarks for success.



Accurately track progress towards achieving your goals and targets with reliable, audit-proof reporting data.



Retain complete data ownership with the power to integrate into any third-party application or business system. After all, it's your data.



Our team of innovators

For over two decades, we've been at the cutting edge of building technology, turning complex operational data into actionable insights and powerful automations.

Our expert team brings passion, precision, and innovation to every project, ensuring our clients achieve their financial, environmental, and operational goals. Our team is here to empower businesses to unlock a greater impact, driving efficiency and sustainability through personalised support and advanced, tailored solutions.



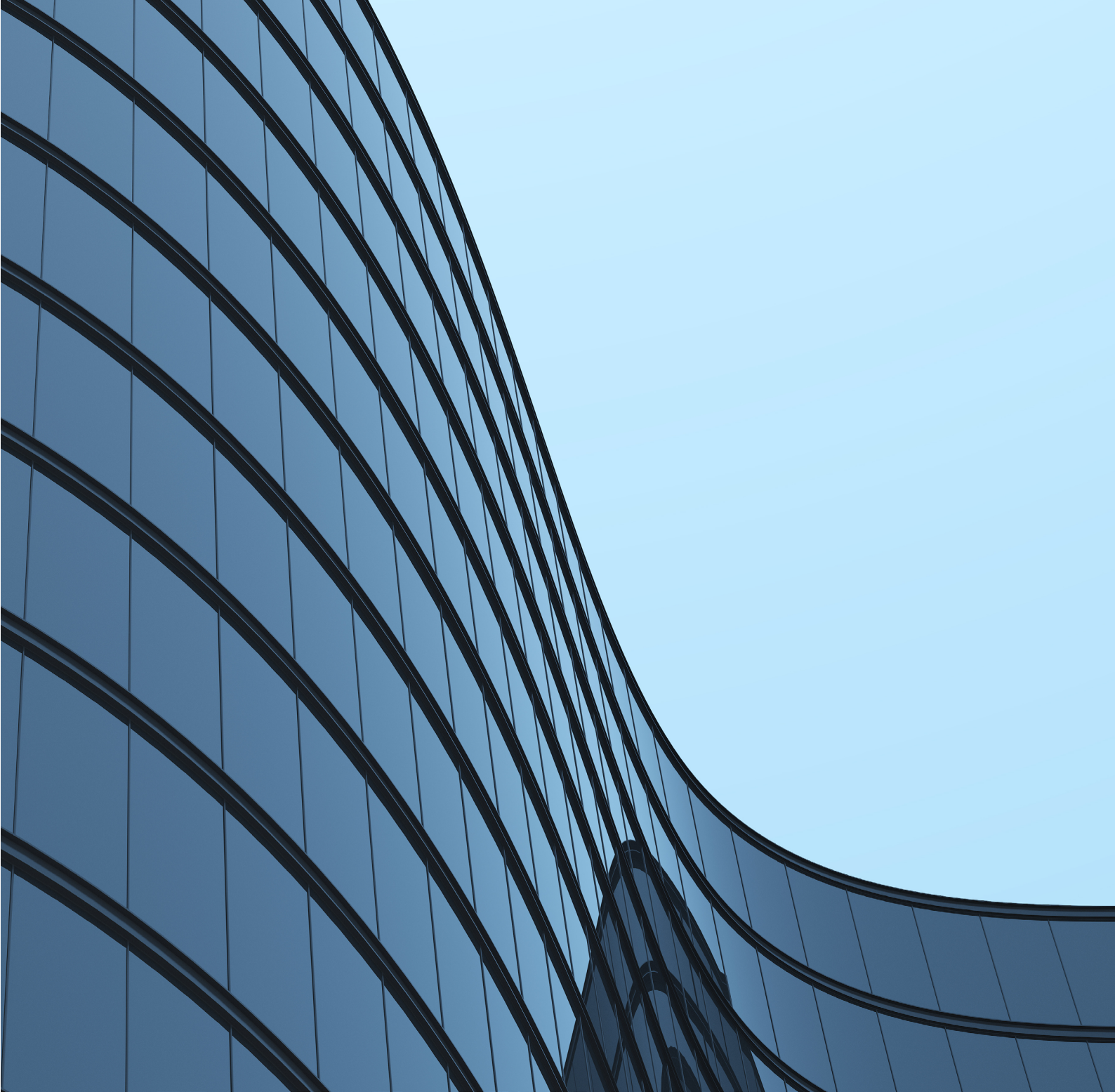
NICOLETTE MAURY
CEO
(NED ABC,
Ex-CEO Asto (Santander Group),
Ex-MD Intuit Australia)



PAUL DEARLOVE
Co-Founder
(20+ years Avani)



GLEN MILLER
Head of Technology
(15+ years Avani)



Unlock a **greater impact**

Get in touch

E: info@avanisolutions.com

P: 1300 156 391

W: avanisolutions.com

Sydney

Level 2,
50 Bridge Street
Sydney NSW 2000

Perth

Level 32,
152 St Georges Terrace
Perth WA 6000