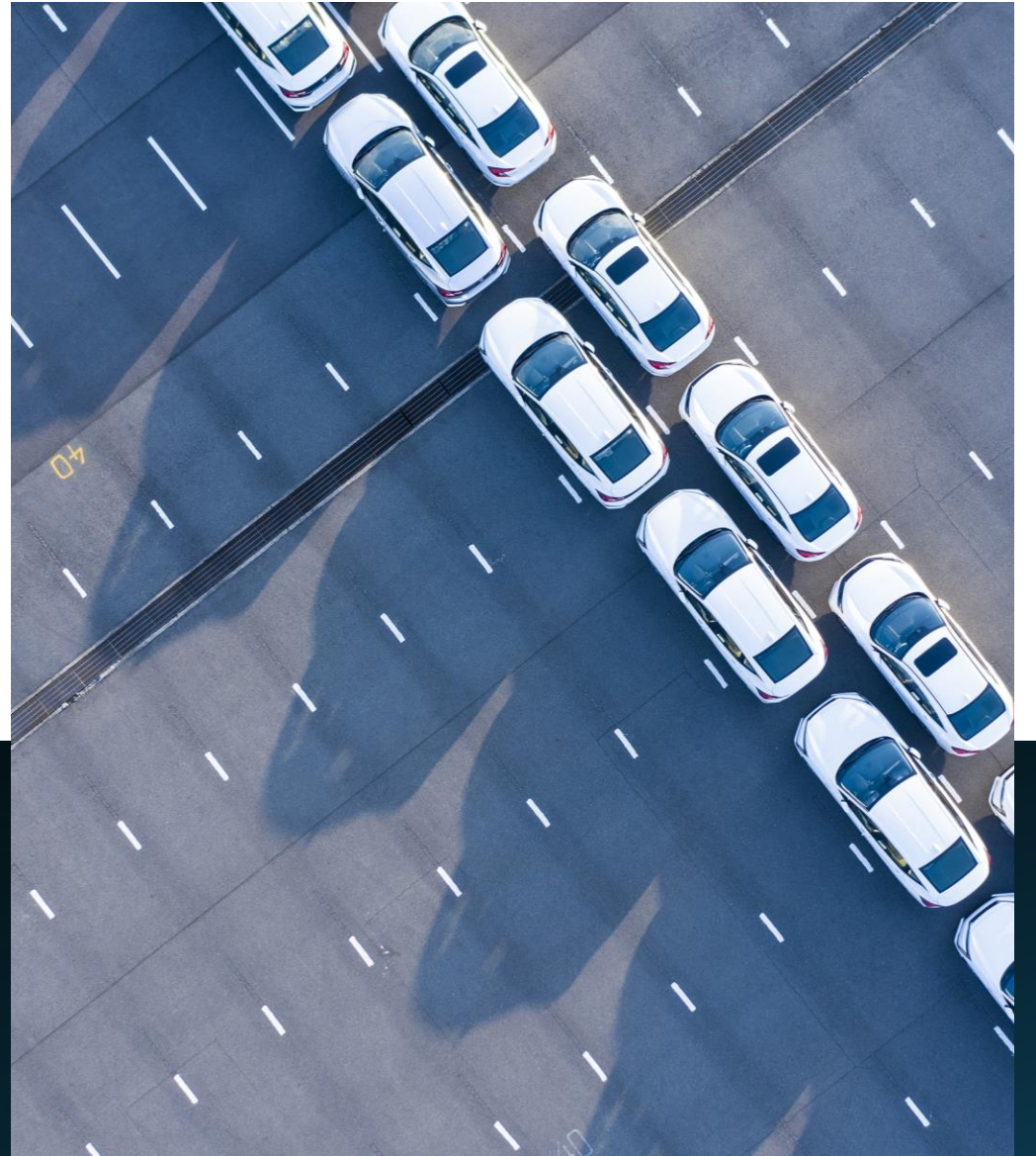


# Fleet Management Solution

Enhancing Efficiency, Security,  
and Sustainability



## Why Choose Our Solution?

---

Address critical operational challenges in fleet management.

---

Integrated, data-driven systems for vehicles, personnel, and facilities.

---

Proven technologies enhancing safety, efficiency, and cost control.

# Challenges in Fleet Management

---

Inefficient vehicle utilization

---

High fuel costs and theft risks

---

Driver safety and behavior issues

---

Rising maintenance costs and downtime

---

Unauthorized access to vehicles and premises

---

Lack of real-time oversight and security

---

Tyre management inefficiencies

# RainRock Telematics and IoT Platform

## Unlock

Unlock your fleet's potential with a solution offering advanced capabilities like fuel control, driver behavior monitoring, video telematics, and streamlined reporting.

## Go

Go paperless and automate routine processes, maximizing resource utilization and cutting costs.

## Reduce

Reduce downtime, prolong vehicle lifespans, and safeguard against theft.

## Ensure

Ensure GDPR compliance and leverage ISO-certified development standards for operational excellence.

# RainRock Telematics and IoT Platform

## Fleet Management Capabilities

- Real-time GPS fleet tracking.
- Monitor driving behavior to improve safety.
- Reduce downtime, fuel consumption, and repair costs.
- Enhance vehicle and goods safety.
- Comprehensive digitalization of fleet operations.

# RainRock Telematics and IoT Platform

## A Right Fit for Multiple Industries

- Long-Haul Transportation
- Local Deliveries
- Home and Public Utilities
- Safety and Security
- Mining and Processing
- Construction

## Seamless Integration and Security

---

Seamlessly integrates with enterprise software such as CRM, ERP, and BI systems, automating your operational flow.

---

Data storage and protection comply fully with GDPR standards.

---

# Real-Time GPS Tracking

---

## Features

---

Live vehicle tracking with geofencing.

---

Automated alerts for route deviations and unauthorized movements.

---

Comprehensive analytics for improved route optimization.

---

## Benefits

---

Boosts fleet efficiency and transparency.

---

Reduces fuel and operational costs.



# Enhancing Safety with Video Telematics



## Features

In-cab, front, and rear cameras.

Real-time video streaming linked with telematics data.

Incident recording for disputes and training purposes.



## Benefits

Improves driver accountability and safety.

Provides evidence for faster incident resolution.

# AD Plus 2.0 AI dashcam

- Uses artificial vision based on video analysis technology
- Automatically identify road risks and unsafe driving behaviors of drivers
- Any detected event will trigger audible and visual reminders to remind drivers in real time
- Event videos can also be uploaded to the cloud



# Advanced Fuel Management

---

## In-Tank Fuel Devices

---

Specialized devices are installed inside tanks to inhibit unauthorized fuel draining, reducing theft and wastage.

---

## Fuel Level Sensors

---

Sensors monitor fuel levels in real time, tracking usage patterns and detecting anomalies such as leaks or theft.

---

## Data Integration

---

Our platform seamlessly reads sensor data, processes it, and generates reports on fuel consumption, efficiency, and irregularities.

# Diesel Guard

- EASY INSTALL
- MAINTENANCE FREE
- 100% TANK PROTECTION



# Advanced Fuel Management

---

## Benefits

---

Prevents fuel theft and misuse.

---

Enables accurate tracking of fuel usage for better budget control.

---

Improves operational transparency with actionable insights from automated reports.

---

Reduces waste and improves budget control.

---

---

## Features

---

Real-time fuel level monitoring.

---

Alerts for anomalies like theft or excessive usage.

---

Monthly reports for actionable insights.

# Advanced Fuel Management

---

## **RFID Windshield Tags**

---

Vehicles will be equipped with RFID tags ensuring they can only be fuelled at designated fuel stations (e.g., Astron).

---

This prevents unauthorized refuelling and helps monitor refuelling patterns accurately.

---

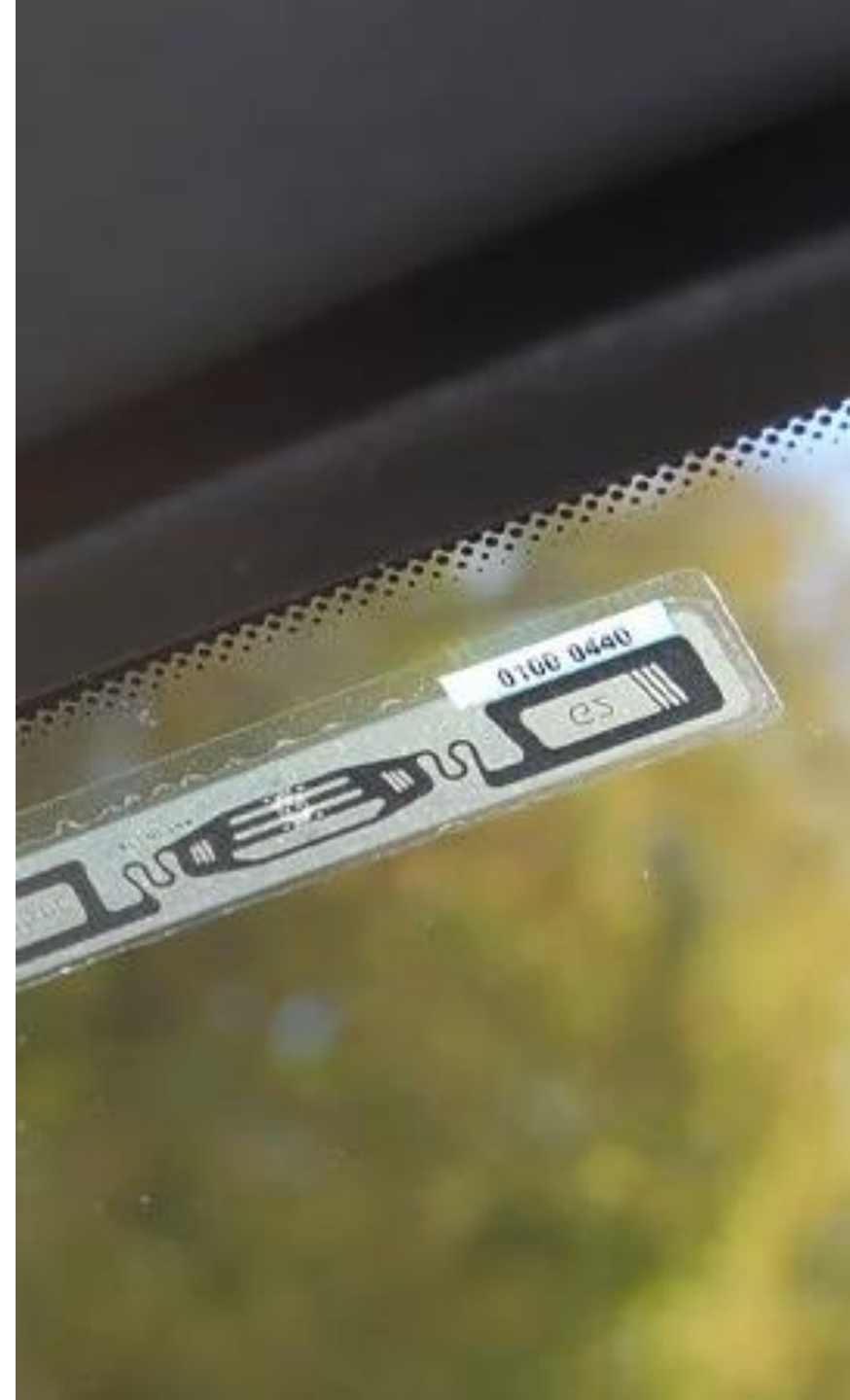
## **Data Integration**

---

The platform consolidates sensor and RFID data, generating detailed reports on fuel transactions and usage.

# Break on Remove RFID Tamper Evident Glass Windscreen Sticker

- For large trucks we can mount inside Headlamps / on mirrors.
- The Petrol Attendant simply scans the Tag as they would a Payment Card.
- Sticker is stuck to the vehicle it proves the vehicle was on the forecourt



# Optimizing Driver Performance

## Features

- Real-time analysis of driving habits.
- Automated driver scorecards and training suggestions.
- Violation alerts for speeding, harsh braking, and more.

## Benefits

- Reduces accidents and fuel consumption.
- Promotes safer driving practices.



# Comprehensive Maintenance and Licensing Management

## Service Intervals for Vehicle Licensing

We use the Service to track vehicle license renewals by setting up service intervals based on the specific renewal dates.

Automated reminders and task assignments ensure timely vehicle licensing, preventing lapses.

## Fines Management with Notifications

Notifications will be used to set up alerts for traffic fines, vehicle inspection deadlines, and license renewals.

Fleet managers receive timely alerts, ensuring that no fines are missed and that all licensing and regulatory requirements are met promptly.

## Benefits

Automates tracking of licensing renewals, reducing human error.

Minimizes the risk of vehicle fines by setting up proactive reminders.

Keeps fleet operations compliant and organized.

# Streamlined Operations

---

## **Logistics Apps**

---

Optimize delivery routes and monitor task completion in real-time.

---

Enable electronic proof of delivery for transparency.

---

## **Staff Scheduling**

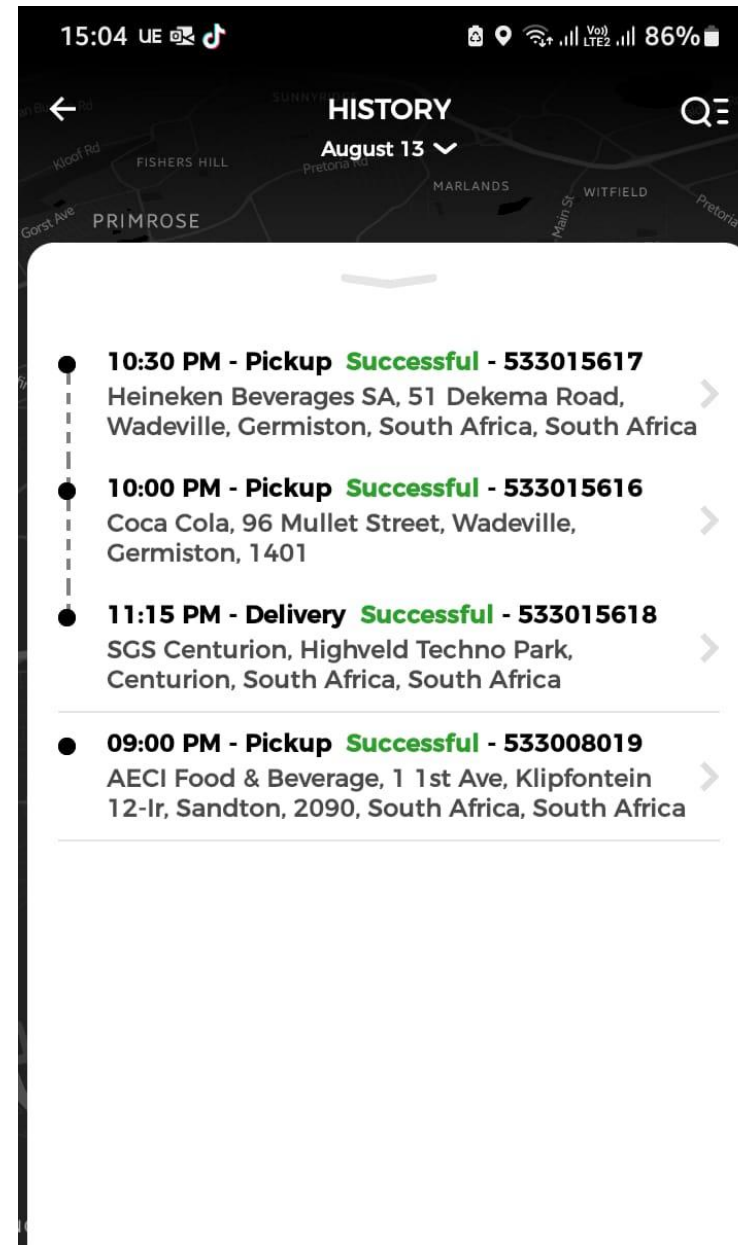
---

Automate shift management for drivers.

---

Ensure compliance with labour laws and optimal utilization.

# Driver's App



# Proactive Fleet Maintenance

---

## Features

---

Predictive maintenance scheduling based on vehicle usage.

---

Integration with suppliers for seamless parts and servicing.

---

Real-time alerts for upcoming or overdue maintenance.

---

## Benefits

---

Extends vehicle lifespan and minimizes downtime.

# Securing Premises and Assets

---

## Security & Access Control

---

RFID-based or Biometric Access Control ensures that only authorized personnel can access sensitive areas, such as workshops and vehicle parking spaces.

---

Real-time tracking of entry and exit times, integrated with fleet data to ensure compliance with operational schedules and security protocols.

---

Geofencing for perimeter control, ensuring vehicles are only accessed or exited from designated areas.

RFID Tamper  
Evident  
Glass  
Windscreen  
Sticker



# Securing Premises and Assets

---

## **CCTV Solutions for Workshops and Vehicle Parking Spaces**

---

CCTV Surveillance systems are installed across workshops and vehicle parking areas to monitor vehicle conditions, prevent theft, and ensure safety.

---

Video footage is stored securely and integrated with access control systems for real-time monitoring and incident resolution.

---

Real-time alerts for suspicious activity or unauthorized entry, ensuring a quick response to security threats.

---

Cloud storage options ensure scalability and data protection, and systems are compliant with security standards, including GDPR for data privacy.

# Securing Premises and Assets

---

## **Benefits**

Enhanced Security: Prevents unauthorized vehicle access, theft, and vandalism.

---

Operational Oversight: Ensures monitoring of vehicles and assets across the premises.

---

Compliance and Safety: Provides a secure environment, meeting industry regulations for safety and asset protection.

---

Real-Time Monitoring: Allows security personnel to respond immediately to any security breach.

---



# Securing Tyres with Advanced Management

---

## **Laser Engraving for Tyre Identification**

---

Tyres will be engraved with details like the date of fitting using laser technology.

---

Security personnel will inspect tyres during vehicle entry and exit to ensure correct placement and prevent theft.

---

## **Tyre Pressure Sensors**

---

Sensors will monitor tyre pressure in real time, ensuring it remains at optimal levels.

---

Alerts will be issued for under-inflation or over-inflation, reducing unnecessary wear and tear.

---

## **Benefits**

---

Prevents tyre theft and unauthorized swaps.

---

Extends tyre lifespan by maintaining optimal pressure levels.

---

Improves vehicle safety and reduces maintenance costs by avoiding premature wear.

# Handheld Portable Laser Printer Marking Machine

- Can mark, engrave, hollow out and cut all kinds of characters, symbols, graphics, images, bar codes, serial numbers etc



# Why RainRock?

---

**Cost Efficiency:** Achieve fast ROI by reducing fuel costs, repairs, and fines.

---

**Data-Driven Decisions:** Access reliable, real-time fleet data for effective decision-making.

---

**Enhanced Security:** Protect your fleet from theft, hijacking, and unauthorized trips.

---

**Customizable Insights:** Generate flexible reports tailored to your business needs.

---

**Seamless Integration:** Effortlessly integrate with your existing systems for smooth operations.

---

**Proactive Management:** Receive real-time notifications to respond quickly to emergencies.

Let's Drive  
Efficiency  
Together

---

RainRock Fleet Solutions

---

rainrock@rainrock.co.za

---

+27 79 459 2659

---

“Partner with us to revolutionize your  
fleet and premises management.”