

PL-200T00-AC Microsoft Power Platform Functional Consultant

Course Duration: 5 Days



About This Course

This five-day course teaches participants how to perform discovery, capture requirements, engage subject matter experts and stakeholders, translate requirements and configure Power Platform solutions and apps.

In this course, students will learn to perform discovery, capture requirements, engage subject matter experts and stakeholders, translate requirements, and configure Power Platform solutions and apps. They will supplement their learnings with hands-on labs to create application enhancements, custom user experiences, system integrations, data conversions, custom process automation, and custom visualizations. Power Platform is comprised of four key products: Power Apps, Power Automate, Power BI, and Power Virtual Agents. In this course, we will cover these four applications in depth, with additional focus on Microsoft Dataverse (formerly Common Data Service), AI Builder, connectors, and portals.

Participants will receive instructor led training, course materials and an exam voucher to take the PL-200 certification exam. Participants who pass this will earn the Microsoft certification: Power Platform Functional Consultant Associate.

Target Audience

A Power Platform Functional Consultant is responsible for performing discovery, capturing requirements, engaging subject matter experts and stakeholders, translating requirements, and configuring Power Platform solutions and apps. The Functional Consultant implements components of a solution that include application enhancements, custom user experiences, system integrations, data conversions, custom process automation, and custom visualizations.

Unique Value Proposition



Trained by Expert in the Power Platform

Learn from our skilled Power Platform consultants who are also certified trainers.



Certification Pathway

Explore the certifications that are applicable for both personal and organisational growth.



Recognition as a high-skilled professional

Earn the Functional Consultant certification to open up new career opportunities in a growing area.

At Course Completion

After completing this course, students will be able to:

- ✓ Work with an organisation to gather requirements and implementing Power Platform solutions
- ✓ Build model-driven, canvas and portal apps
- ✓ Create Power Automate flows
- ✓ Design a simple chatbot using Power Virtual Agents
- ✓ Analyse data using Power BI visualisations and dashboards



Key Topics

Module 1: Introduction to Power Platform

This module will provide the learner with background about the Power Platform and its 4 key components: Power Apps, Power Automate, Power BI, and Power Virtual Agents.

Lessons: Power Platform Overview

Lab: Validate lab environment.

After completing this module, students will be able to:

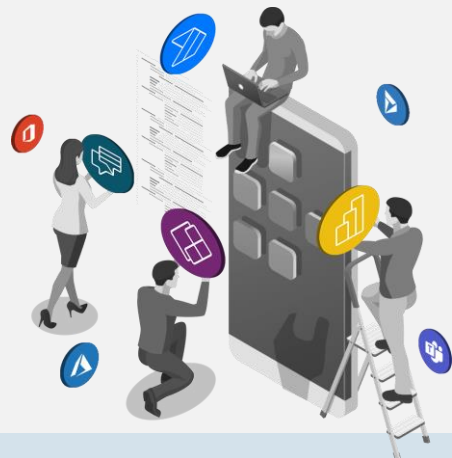
- Identify the key components of the Power Platform
- Describe the role of a functional consultant

Module 2: The Functional Consultant Role

In this module, students will learn more about the functional consultant role and the skills required to successfully implement a Power Platform solution for an organization.

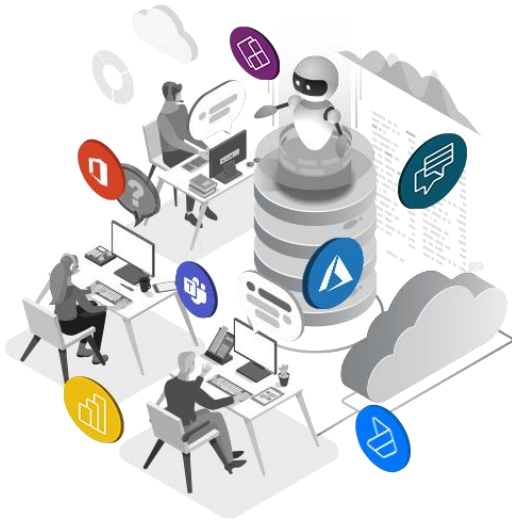
Lessons:

- Consultant skills overview
- Create and validate documentation
- Engage stakeholders
- Perform quality assurance
- Configure integrations



After completing this module, students will be able to:

- Engage stakeholders with demos
- Design integrations
- Create table (entity) relationship diagrams
- Interact with consultant and customer organization teams



Module 3: Work with Dataverse

In this module, students will learn about creating a data model in Microsoft Dataverse, including importing data, using tabular reporting options, and configuring security. They will also learn about creating easy AI with AI Builder.

Lessons:

- Work with the data model
- Create and manage processes
- Work with AI Builder
- Configure Dataverse settings
- Import and export data
- Use tabular reporting options
- Configure security settings

Lab:

- Create an app
- Create tables and columns
- Create relationships
- Additional table options

After completing this module, students will be able to:

- Understand tables, columns, rows and relationships
- Work in an environment within the Power Platform admin center
- Configure a data model in Dataverse

Module 4: Make Power Apps

In this module, students will learn the business value of the three types of Power Apps. They will then learn to how to configure and design them, including user experience considerations for each type of application.

Lessons:

- Make model-driven apps
- Make canvas apps
- Make portal apps

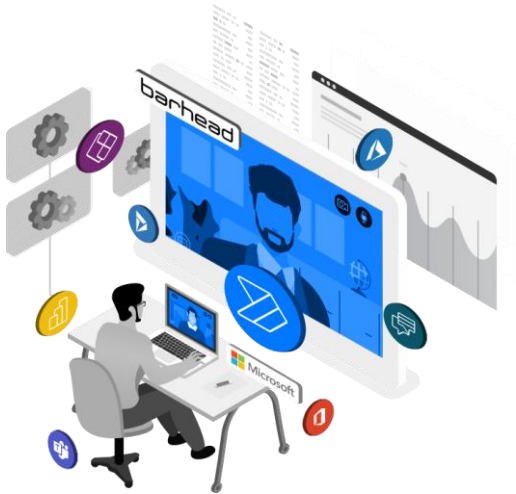
Lab:

- App designer
- Canvas app fundamentals
- Modify forms
- Work with data and services
- Modify views
- User experience
- Build dashboards



After completing this module, students will be able to:

- Connect to data in Power Apps
- Build a Power App
- Design an application user experience



Module 5: Build Power Automate flows

In this module, students will learn how to automate business processes using Power Automate flows, business process flows, and UI flows.

Lessons:

- Build flows
- Build business process flows
- Build UI flows

Lab:

- Create users
- Create security role
- Configure a new business rule
- Advanced business rules
- Create a flow
- Build approval flow
- Build a business process flow
- Add branching to business process flow

After completing this module, students will be able to:

- Create flows
- Create business process flows
- Understand UI flows

Module 6: Work with Power Virtual Agents

In this module, students will learn how to automate customer interactions with a chatbot using Power Virtual Agents.

Lessons:

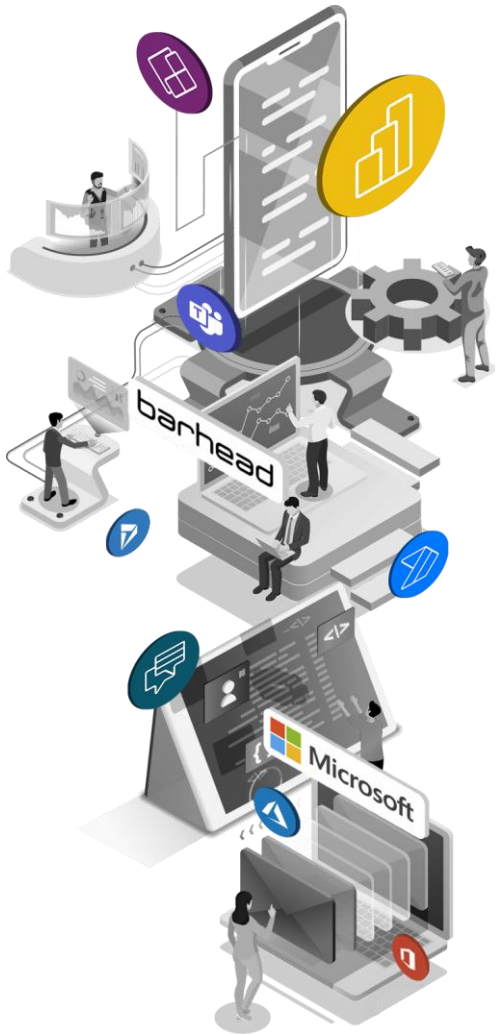
- Create a chatbot
- Configure entities
- Configure topics
- Test and publish chatbots
- Automate and integrate

Lab: Create a chatbot

After completing this module, students will be able to:

- Create a chatbot
- Include a flow in a chatbot
- Create topics and entities





Module 7: Analyze data with Power BI

In this module, students will learn how to work with Power BI Desktop and Power BI Service to analyze data and create visualizations.

Lessons:

- Get started with Power BI
- Model data in Power BI
- Create visualizations
- Create dashboards
- Publish and share in Power BI

Lab:

- Build a Word template
- Build an Excel template
- Duplicate detection
- Import data
- Export data
- Bulk delete

After completing this module, students will be able to:

- Create visualizations
- Consume data in Power BI
- Export data visualizations for stakeholders

Pricing

Power Platform Functional Consultant Certification is delivered for a fixed fee of AUD 4,250 per participant. Minimum of 5 participants per session.