

# Isolated Recovery Environment for Epic on Azure

Powered by Microsoft Azure  
and Epic on Azure

# Enhance Compliance and Security for your Epic Environment with an Isolated Recovery Environment

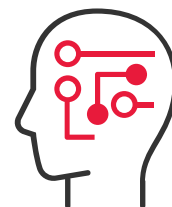
As healthcare organizations increasingly adopt Epic to streamline operations and enhance patient care, they also encounter growing challenges related to compliance, security, and resilience against potential cybersecurity threats.

BDO empowers your organization with a **future-ready, robust, Isolated Recovery Environment** for your on-prem or hybrid Epic environment.

We look forward to helping you achieve your Epic goals. **Faster.**



**50,000+** GLOBAL CUSTOMERS



**250+** SECURITY SPECIALISTS



# Isolated Recovery Environment for Epic on Azure

With incidents such as ransomware attacks and significant system outages on the rise, the need for a robust recovery solution has never been more critical. BDO Digital addresses these pressing concerns by offering a tailored, secure, and high-performing Isolated Recovery Environment (IRE) for Epic on Azure.

## TYPICAL CLIENT CONCERNS



### Complexity

Complex on-prem configurations increase operational overhead



### Recovery Time

Long recovery time and extensive recovery tasks



### Compliance Requirements

Changing compliance requirements and certifications for HIPAA and insurance



### Data Integrity

Corrupted data resulting from ransomware and cyber attacks

## HOW BDO CAN HELP



**A Comprehensive Strategy** - Review your Epic infrastructure with technical specialists and consultants



**Compliance** - Leverage Azure's built-in compliance certifications and workload protection features



**Cybersecurity Insurance** - Quickly show cybersecurity insurance providers that your environment is backed up and available to recover



**Operational Overhead** - Drive efficiency with integrated and fast data recovery

# Delivery Approach

## EHR ON AZURE

*“I want to reduce my EHR spend, improve performance, and increase security, but I don’t know where to start.”*

Have BDO assess your existing EHR IT environment to optimize your IT spend and performance.

### Results:

- ▶ Substantial cost savings
- ▶ Improved security
- ▶ Scalability
- ▶ Simplified infrastructure management



#### STEP 1 Morning Session

Start with a comprehensive overview of your current requirements, initiating a rapid yet thorough information gathering phase.



#### STEP 2 Midday Review

Transition into an intensive session dedicated to data and document collection, emphasizing key components of your EHR system.



#### STEP 3 Afternoon Analysis

Shift gears to a focused analysis, leveraging the morning's findings to start shaping preliminary recommendations.



#### STEP 4 Closing Discussion

Conclude with an interactive session to outline initial thoughts and strategize next steps, keeping stakeholder engagement at the forefront.

# The BDO Center for Healthcare Excellence and Innovation

## Who We Are

The [BDO Center for Healthcare Excellence and Innovation](#) brings together over 450 of the best minds from different disciplines. Together we leverage proven frameworks and lessons learned to help clients:

- ▶ Improve the patient and provider experience
- ▶ Enhance the ability to deliver quality care
- ▶ Drive financial improvement

Our practice brings together healthcare leaders with deep industry experience across financial, clinical, operational, data analytics, and legal disciplines. BDO is committed to a distinctive collaborative culture that breaks down barriers, builds bridges between disciplines for robust organizational change, and creates seats at the table for all parties.

We leverage insight and experience across all aspects of the healthcare industry to help organizations anticipate change. This allows them overcome the many hurdles associated with risk-based reimbursement, policy change, and clinical outcomes. We help our clients find new opportunities to improve performance in the short term as well as achieve long term transformational change.

### OUR TEAMS ARE COMPRISED OF THE FOLLOWING PROFESSIONALS:



Clinicians



Forensics



Process Improvement  
LEAN Engineers



Healthcare  
Executives



Strategists



Digital/Technology  
and Developers



Financial  
Management



Consumer Design  
Specialists



Revenue Cycle and  
Reimbursement  
Specialists



Operational  
Management



Chief Information  
Officers and  
Application SMEs



Tax and  
Audit



Revenue Cycle  
Leaders



Regulatory  
Specialists



Actuaries

# Trust BDO as your Microsoft Partner

Strategic Alliance for your Success

Microsoft Practice by the numbers:

**450+** Microsoft Certified Professionals

**250+** Certified Security Specialists

**\$585M+** Technology Solutions Delivered

**130+** Cloud Solution Provider Clients

[CLICK TO LEARN MORE ►](#)



PEOPLE

**119,000+**



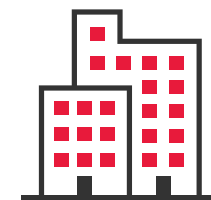
BDO DIGITAL  
PROFESSIONALS

**12,000**



COUNTRIES AND  
TERRITORIES

**166**



OFFICES

**1,800**

‘BDO’, ‘we’, ‘us’, and ‘our’ refer to one or more of BDO International Limited, its network of independent member firms (‘the BDO network’), and their related entities.

The BDO network is an international network of independent public accounting, tax and advisory firms which are members of BDO International Limited and perform professional services under the name and style of BDO (hereafter: ‘BDO Member Firms’). BDO International Limited is a UK company limited by guarantee. It is the governing entity of the BDO network.

Service provision within the BDO network is coordinated by Brussels Worldwide Services BV, a limited liability company incorporated in Belgium. Each of BDO International Limited, Brussels Worldwide Services BV and the BDO Member Firms is a separate legal entity and has no liability for another entity’s acts or omissions. Nothing in the arrangements or rules of the BDO network shall constitute or imply an agency relationship or a partnership between BDO International Limited, Brussels Worldwide Services BV and/or the BDO Member Firms. Neither BDO International Limited nor any other central entities of the BDO network provide services to clients.

BDO is the brand name for the BDO network and for each of the BDO Member Firms.

© Brussels Worldwide Services

