

# Modern Desktop Experiences with Azure Virtual Desktop & Windows 365 Cloud PC



# Deploy, Migrate, and Optimize Your Organization's Desktop Experiences With Azure Virtual Desktop and Windows 365 Cloud PC

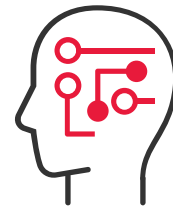
Unlock strategic advantages by transitioning your organization's desktops to Azure Virtual Desktop or Windows 365 Cloud PC.

Empower your workforce with secure, flexible remote access while optimizing costs and reducing IT management overhead.

We look forward to helping you achieve your modern desktop goals. **Faster.**



**50,000+** GLOBAL CUSTOMERS



**350+** CLOUD INFRASTRUCTURE SPECIALISTS

# Modern Desktop Experiences with Azure Virtual Desktop and Windows 365 Cloud PC

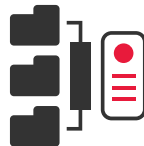
With BDO's professional support, your business can quickly realize measurable savings, enhance productivity, and accelerate your digital transformation—all with clarity and confidence. BDO's 4 to 6 week accelerator is a fast-track to reliable, modern desktop experiences.

## TYPICAL CLIENT CONCERNS



### Secure Remote Work

Maintaining control of company data



### Aging or Complex VDI Infrastructure

Legacy hardware and solutions increasing operational overhead



### Costly Solutions

Changes to licensing and hosting models



### Agility

On-prem solutions preventing adoption of next generation technologies

## HOW BDO CAN HELP



### A Comprehensive Strategy -

BDO will help you determine the best path for long-term modern desktop success



### Improved Security -

Leverage the latest security policies and technologies



### Scalable Solutions -

Optimize hosting and licensing costs and only pay for what you use



### Holistic Integration -

Bring your remote work technologies next to cloud-first technologies to drive performance and innovation



# Modern Desktop Experiences with Azure Virtual Desktop and Windows 365 Cloud PC

The BDO Modern Virtual Desktop Experience Accelerator offers a risk-free, hands-on introduction to modern virtual desktop experiences, powered by Azure Virtual Desktop and Windows 365 Cloud PC.

## Estimated project timeline:

We estimate this initial deployment to take 4 to 6 weeks.

## Key Deliverables Typically Include:

- ▶ AVD and Windows 365 Cloud PC Deployment Strategy
- ▶ User Profile and Storage Management
- ▶ Cost-Optimized Resource Configuration
- ▶ Intune Management Configuration
- ▶ Application Packaging
- ▶ Knowledge Transfer for your Teams



### PHASE 1 Assessment and Planning

Evaluate virtual desktop experiences and infrastructure for opportunities and risks, providing a deployment readiness assessment with projected TCO and timeline.



### PHASE 2 Design and Architecture

Configure secure landing zones for modern virtual desktop environments, integrating network and security controls to protect data.



### PHASE 3 Deployment and Migrate

Deploy and migrate selected desktop workloads, applications, and user personas to Azure Virtual Desktop or Windows 365 Cloud PC.



### PHASE 4 Validation and Testing

Test new Azure Virtual Desktop and Windows 365 Cloud PC based experiences for performance, costs, compliance, and alignment with organizational goals.

# Trust BDO as your Microsoft Partner

Strategic Alliance for your Success

Microsoft Practice by the numbers:

**450+** Microsoft Certified Professionals

**350+** Certified Cloud Specialists

**\$585M+** Technology Solutions Delivered

**130+** Cloud Solution Provider Clients

[CLICK TO LEARN MORE ►](#)



PEOPLE

**119,000+**



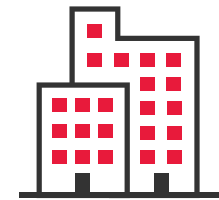
BDO DIGITAL  
PROFESSIONALS

**12,000**



COUNTRIES AND  
TERRITORIES

**166**



OFFICES

**1,800**

‘BDO’, ‘we’, ‘us’, and ‘our’ refer to one or more of BDO International Limited, its network of independent member firms (‘the BDO network’), and their related entities.

The BDO network is an international network of independent public accounting, tax and advisory firms which are members of BDO International Limited and perform professional services under the name and style of BDO (hereafter: ‘BDO Member Firms’). BDO International Limited is a UK company limited by guarantee. It is the governing entity of the BDO network.

Service provision within the BDO network is coordinated by Brussels Worldwide Services BV, a limited liability company incorporated in Belgium. Each of BDO International Limited, Brussels Worldwide Services BV and the BDO Member Firms is a separate legal entity and has no liability for another entity’s acts or omissions. Nothing in the arrangements or rules of the BDO network shall constitute or imply an agency relationship or a partnership between BDO International Limited, Brussels Worldwide Services BV and/or the BDO Member Firms. Neither BDO International Limited nor any other central entities of the BDO network provide services to clients.

BDO is the brand name for the BDO network and for each of the BDO Member Firms.

© Brussels Worldwide Services

