

FutureFlow Rx®

The Power of Predictive Analytics



Reliable, Data-Driven Predictions For Operational Excellence

FutureFlow Rx® is a patient flow analytics platform that continuously updates from the electronic health records (EHR) and predicts patient census and bed availability for the optimal level of care.

Use Cases

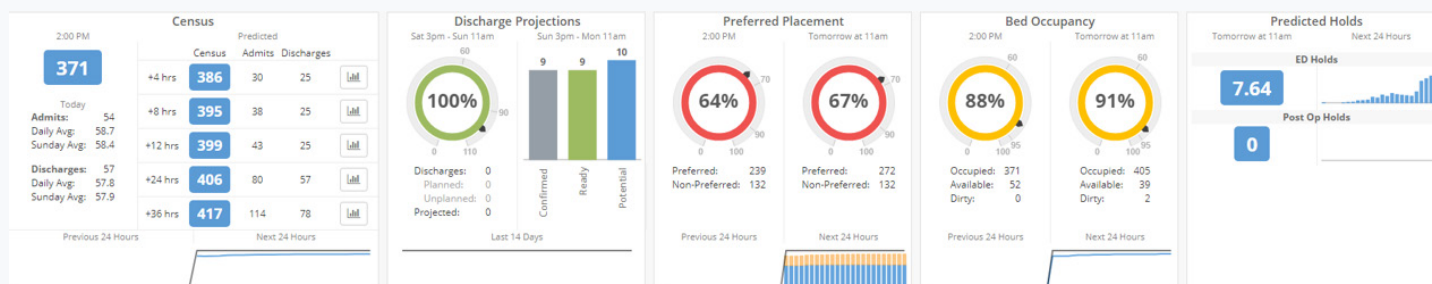
- Predict and manage discharges and other ADT events
- Determine future staffing needs
- Capture and predict accurate bed count
- Predict patient census by unit, hospital, or hospital system in hours, days, weeks, and months ahead
- Test “what-if” scenarios and contingency plans
- Master planning for future facility expansion and service lines

Impact on Hospital Operations and Decision Making

- Automate manual analytics
- Understand staffing needs in advance
- Minimize the number of staffing huddles per day
- Know your contingency plans work in advance

FutureFlow Rx Modules

The continuously-updating modules can predict census, capacity, and staffing needs. With a digital twin of your hospital, identify ways to improve efficiencies, patient flow and reduce operational risk. The modules are accessible across all device types.



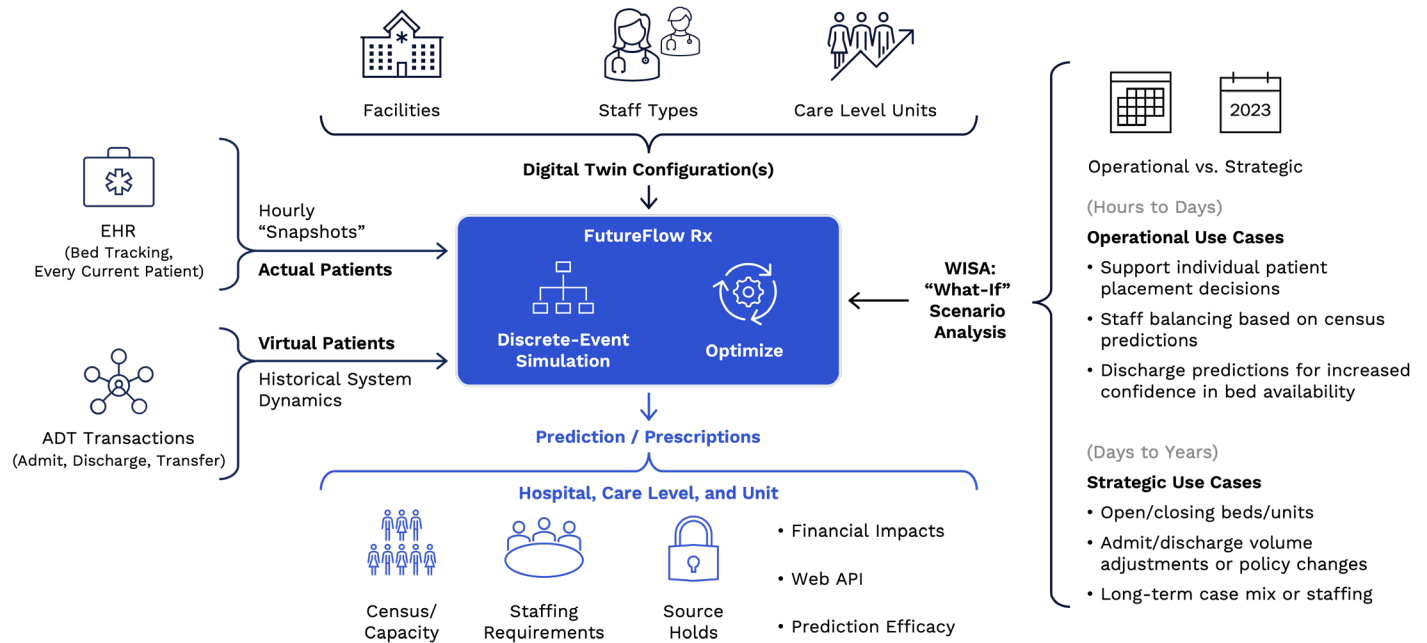
Integrating FutureFlow Rx into our Inpatient Access and Flow workstreams has really supported a smooth, functional, and most importantly effective process for proactively managing census during an especially challenging flu season. Diversions are down, and so is the general level of anxiety around decision-making. Fewer ad hoc huddles, more standard work with established guide rails and actions.

—Ruth McDonald, MD
Assoc. Chief Medical Officer, Seattle Children's Hospital

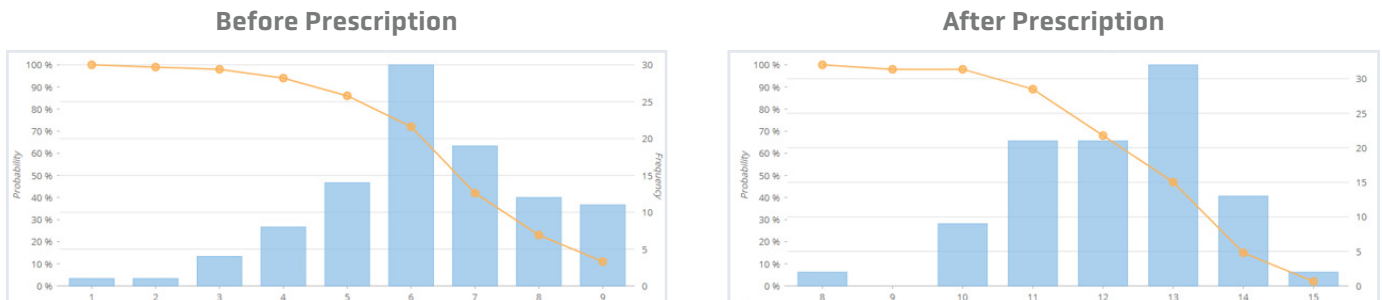


For more information visit BigBear.ai | Info@BigBear.ai

FutureFlow Rx System Overview and Features



What-If? Scenario Analysis



Patient Visual Flow

Patient Name	Flow Class	LOS	August 2019					September 2019			
			27	28	29	30	31	1	2	3	4
Lori Z. Brown	MDC-24-H	6.21d				3 North					
Bruce D. Stockton	MDC-16-L	2.96d				2 West					
Paisley X. Miller	MDC-14-H	1.92d				1 North					
Don S. Ballard	MDC-1-L	3d				1 East					
Paul A. Field	MDC-14-L	1.21d						1 North			
Nathan Z. Patterson	MDC-4-L	3.08d				2 South					
Charles M. Fulton	MDC-10-L	2.92d				2 South					
Madison W. Phillips	MDC-14-L	1.17d						1 North			
Rodney Q. Cowden	MDC-26-H	6.54d				2 South					
Christine F. Bunker	MDC-24-H	6.08d				6 North					



The ability to look forward to our census/patient flow with a high level of confidence will be a game-changer for our clinicians.

—Kerri Webster
Chief Analytics Officer,
Children's Hospital of Colorado

Save Time, Save Money, Improve Patient Care

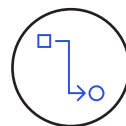
Help create your Patient Command Center for the hospital with FutureFlow Rx.



Reduce
Length of Stay



Streamline
Resources



Avoid Unnecessary
Diversions



Deliver
Optimal Care



BIGBEAR.ai

For more information visit BigBear.ai | Info@BigBear.ai