

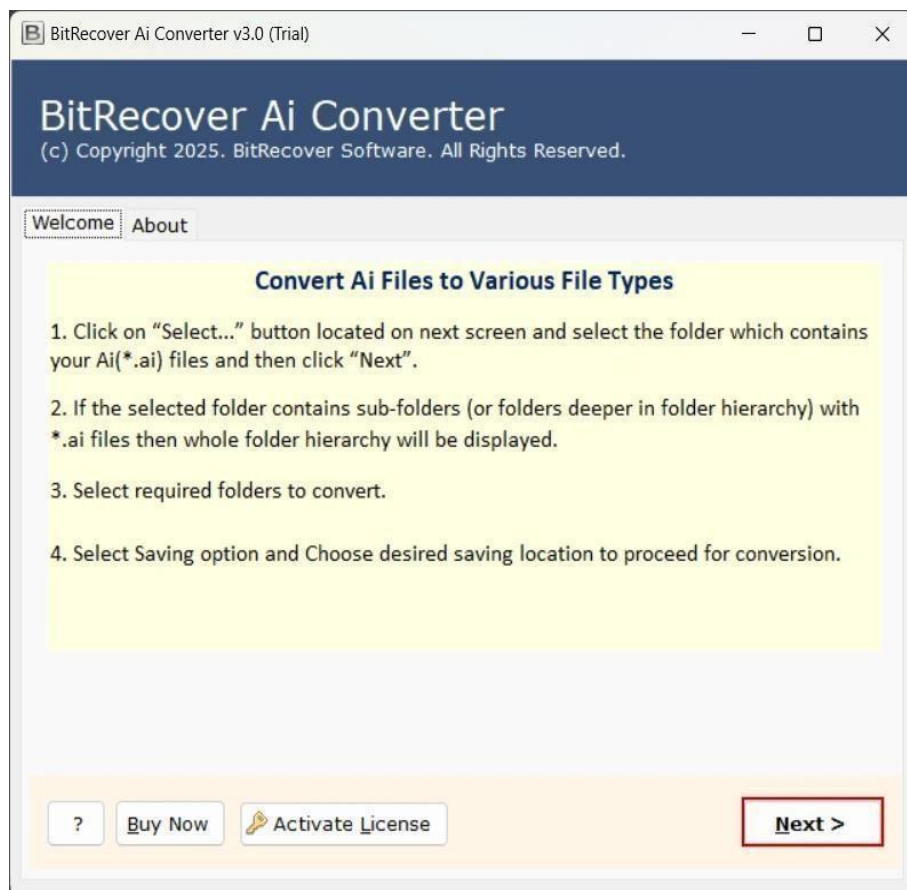
BitRecover AI to GIF Converter

Most advanced offline solution to convert AI files to GIF and other standard formats.

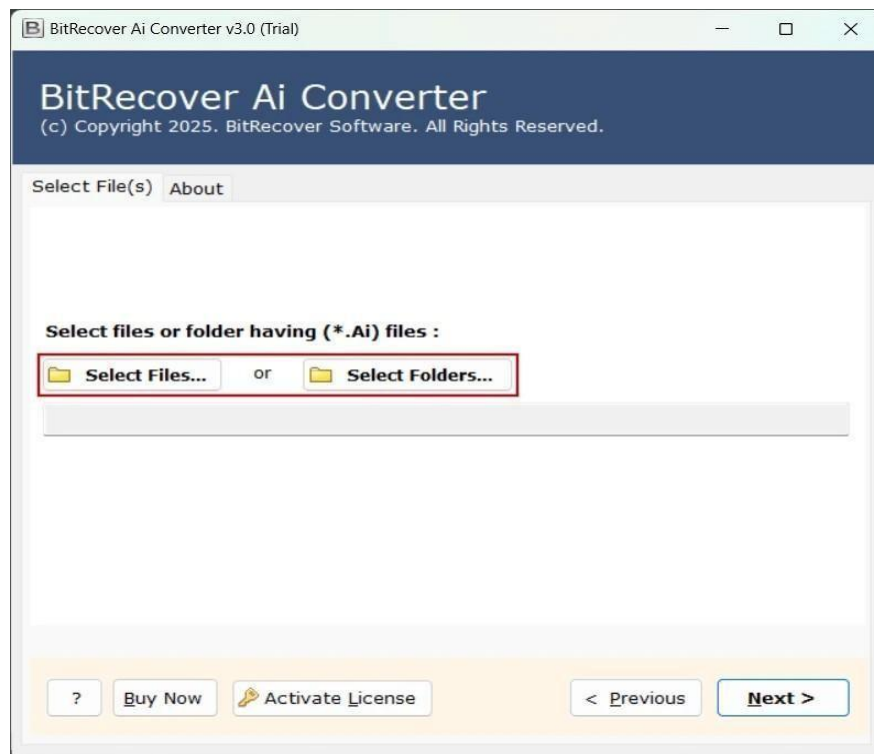
Professionals often face challenges in converting Illustrator file format for better accessibility. Secondly, the AI files are large, leading to a storage space management issue. Therefore, users often need a reliable AI format converter that converts AI files to other generic format to overcome common AI file problems like accessibility, storage space management, archiving purposes, for printing, etc. Here, BitRecover understands the user pain point and comes up with the solution of BitRecover AI to GIF Converter with 10 generic file format saving options.

Visit the Official Page: [AI to GIF Converter](#)

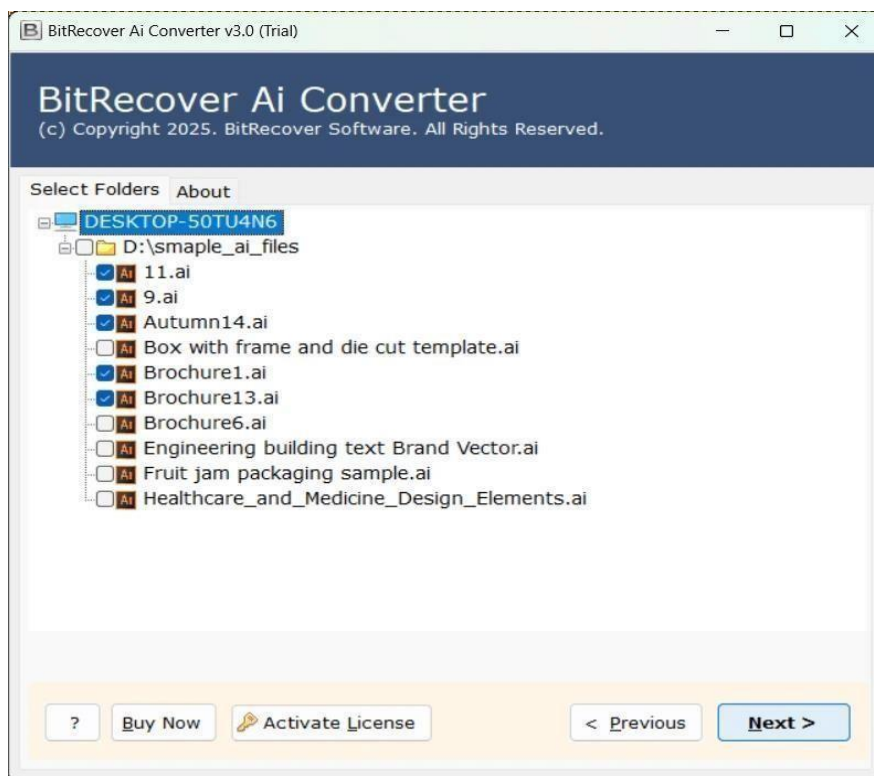
Step 1: Download, install and launch the AI to GIF Converter on your desktop. Now, read the instructions and click on the Next button.



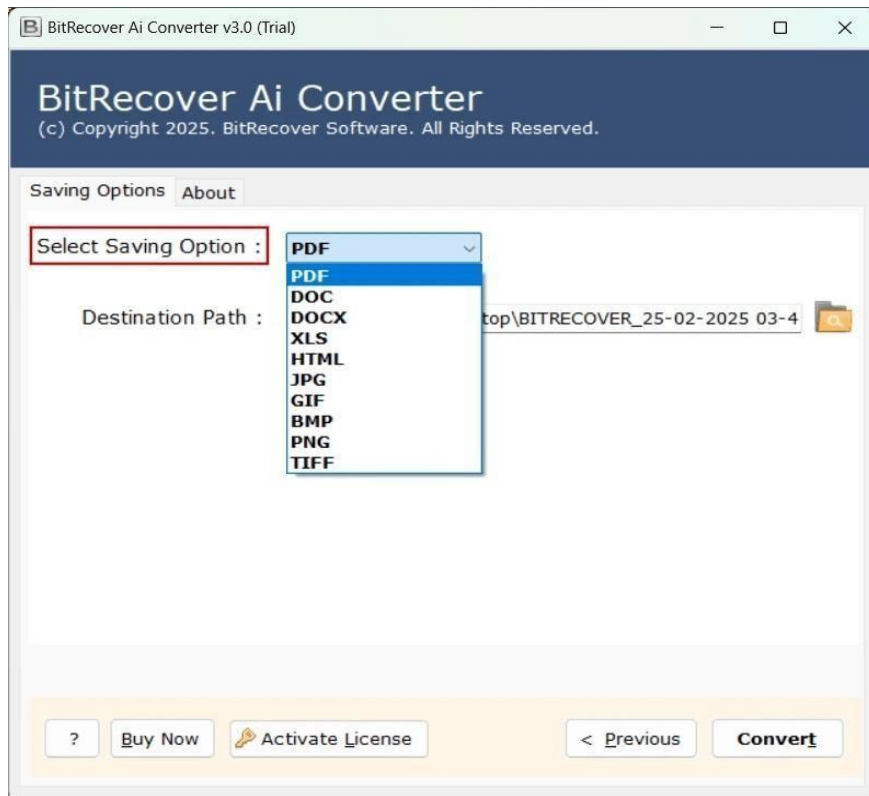
Step 2: Then, click on Select Files or Select Folder options to insert the AI file for conversion in the tool console.



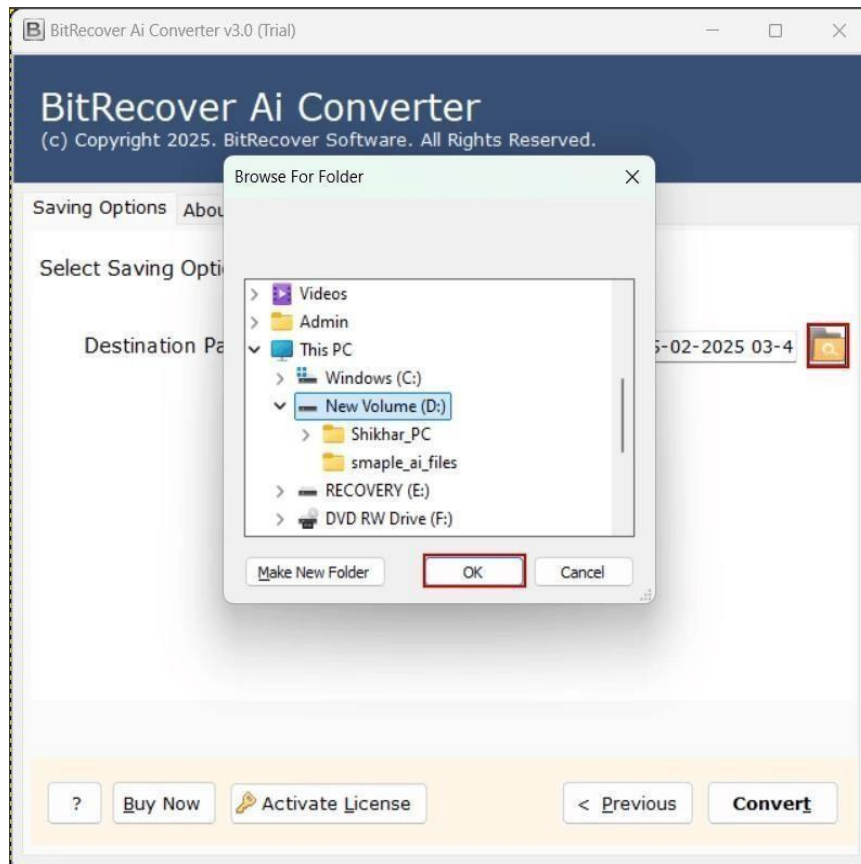
Step 3: After that, enable the Adobe Illustrator files for the conversion process from the software UI.



Step 4: Thereafter, choose the saving file format from the saving options menu according to your choice.



Step 5: Now, click on browse folder icon option to choose the destination storage path of the converted AI files.



Step 6: Finally, click on the Convert button to start the AI file to GIF conversion process.

