

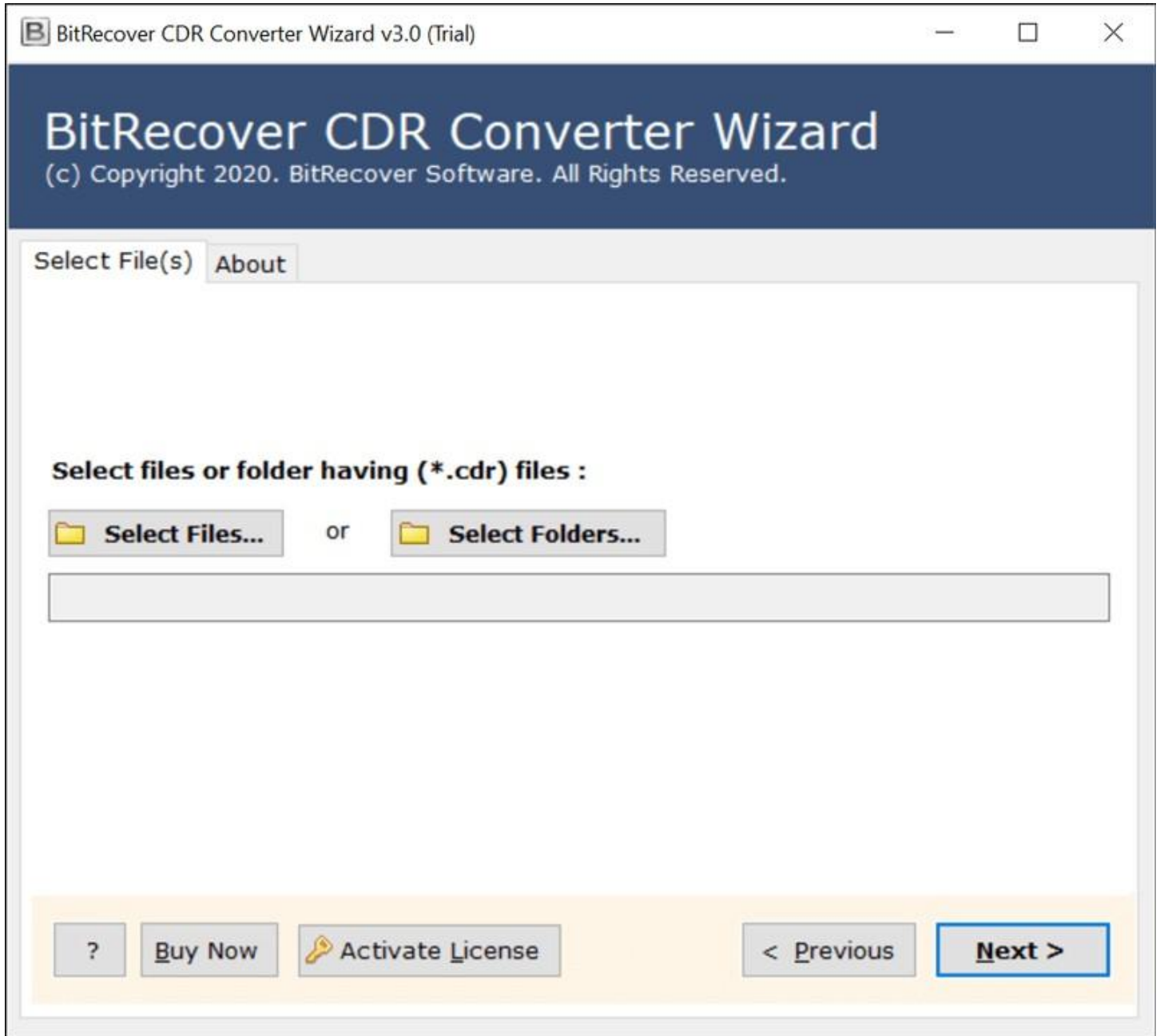
## BitRecover CDR to DOC Converter

The Top-Notch Solution to Convert CorelDRAW CDR Files to DOC and Other Formats.

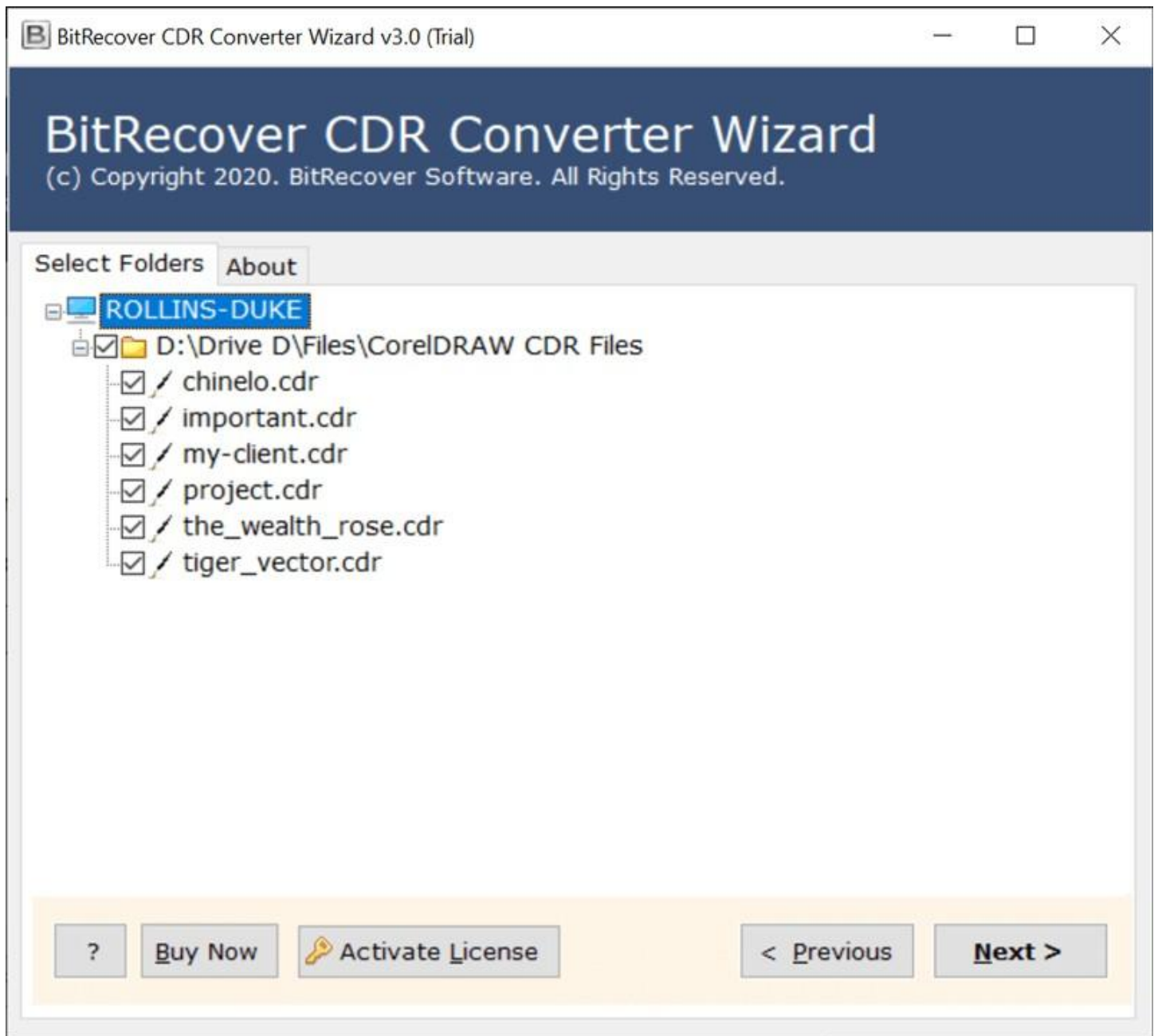
Handling CorelDRAW's CDR files can be challenging, especially when sharing designs with users who may not have CorelDRAW installed. This is where the CDR to DOC Converter Tool comes into play which addresses this issue by enabling users to convert CDR files into multiple formats, including images and documents. This tool ensures that your designs are accessible across various platforms without compromising quality.

Visit the official page: [BitRecover CDR to DOC Converter](#)

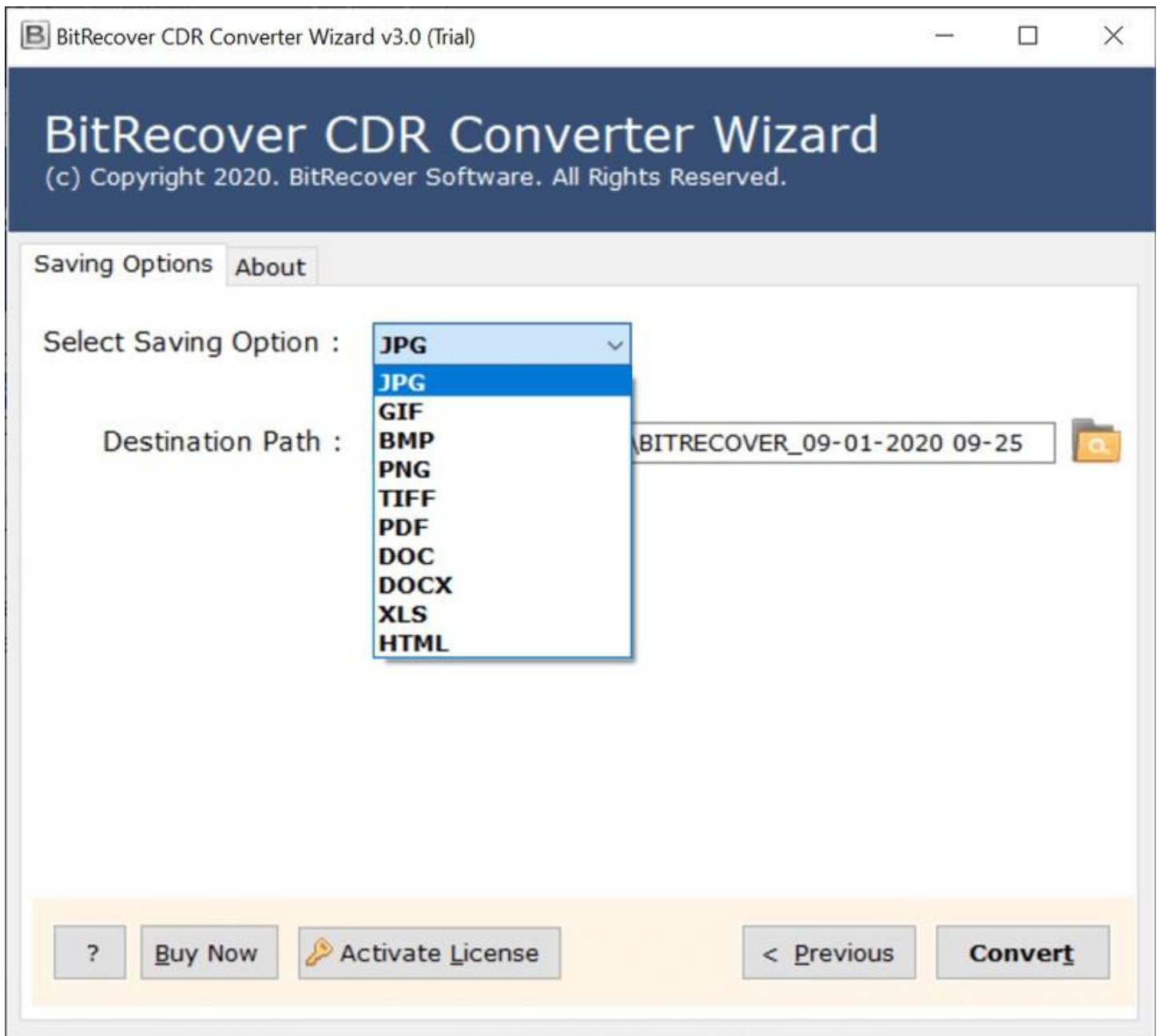
**Step 1: Download** the CDR to DOC Converter and open it. If you wish to upload individual files, click on the **Select Files** option or if you wish to upload folder, click on the **Select Folder** option.



**Step 2:** Tick the required files/folders and click on the **Next** button.



**Step 3:** Choose a saving option for the converted files as per your requirement.



**Step 4:** Choose a destination path for saving the converted files by clicking on the **Folder** icon and then click on the **Convert** button.

By following the above 4 steps, you can efficiently convert your CDR files into DOC format. The software's intuitive interface and batch conversion capabilities ensure a smooth and time-saving experience. Whether you are dealing with a single file or multiple documents, this tool offers the reliability and efficiency needed for effective data management.

### Conclusion

Thus, this CDR to DOC Converter Tool provides a comprehensive and user-friendly solution for converting CDR files into various formats. Its robust features, including batch conversion and support for multiple output formats, make it an ideal choice for users seeking to manage and share their CorelDRAW designs efficiently. By maintaining the integrity of your designs during the conversion process, this tool ensures that your graphics remain accurate and accessible in the desired format.