

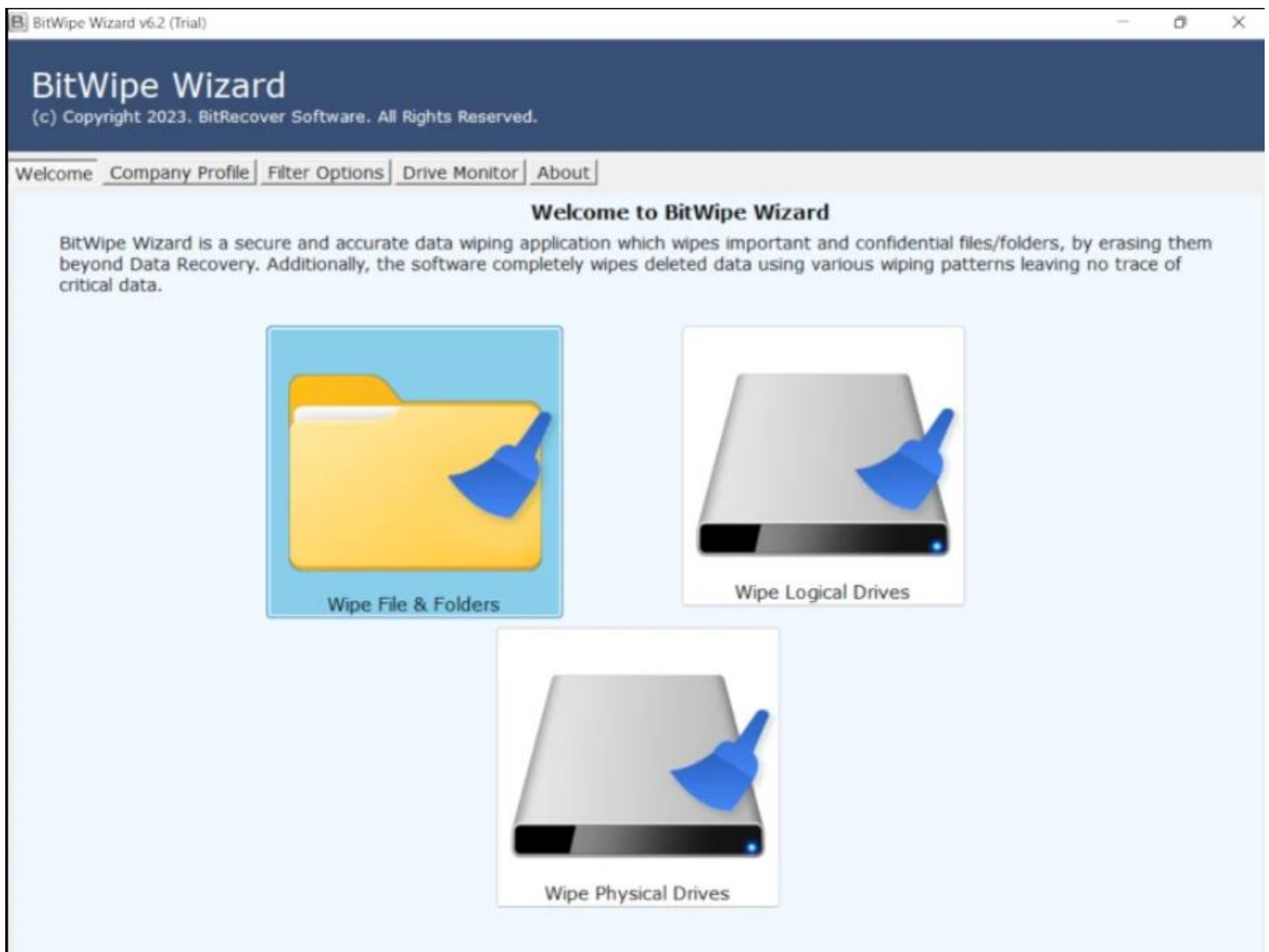
BitRecover BitWipe Wizard

All-in-one utility to wipe files, folders, logical drives, and physical disks

In today's digital age, while disposing of old devices or clearing sensitive data from any sort of storage device, it is very much crucial to safeguard your personal information and that is where BitRecover BitWipe Tool comes into play. This BitWipe Tool is a comprehensive solution which was designed specifically to permanently erase data from various storage devices, including hard drives, SSDs, and memory cards with a very user-friendly interface that allows individuals to securely wipe files, folders or entire drives with just a few clicks.

Visit the official page: [BitRecover BitWipe Wizard](#)

Step 1: Download the BitRecover BiWipe software and **Select** an option from the displayed 3 modes to wipe data i.e. **“Wipe Files & Folders”**, **“Wipe Logical Drives”** or **“Wipe Physical Drives”**.



Step 2: Now, you can either choose the **“Select Files”** option or **“Select Folders”** option depending on your requirements.

BitWipe Wizard

(c) Copyright 2023. BitRecover Software. All Rights Reserved.

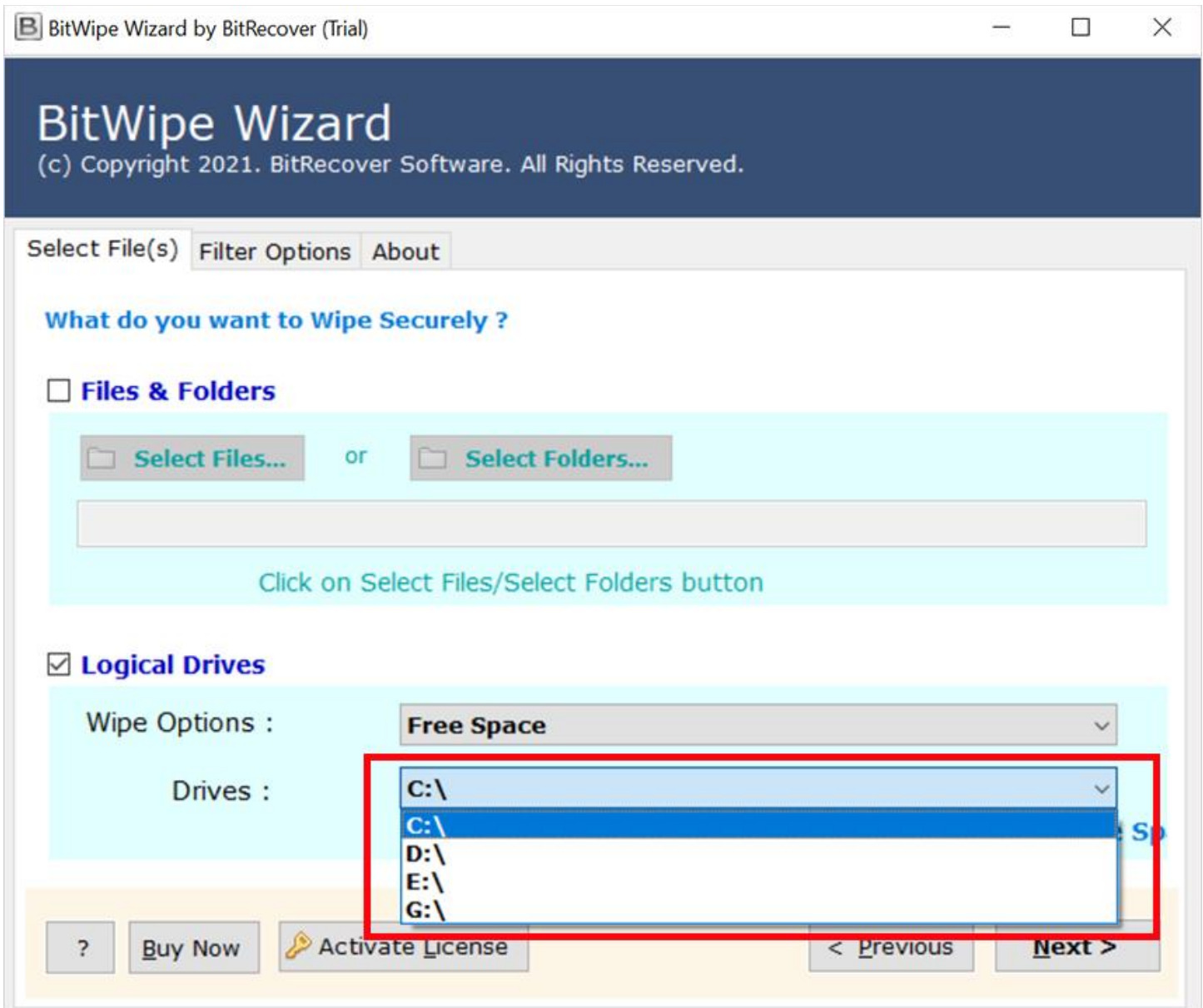
Select File(s) | Company Profile | Filter Options | Drive Monitor | About

What do you want to Wipe Securely ?

or

Click on Select Files/Select Folders button

Step 3: You can select any one of the **Drives** present on your device to erase data permanently.



Step 4: Select any one of the wiping options from the displayed modes i.e. **Light, Medium or High** with each mode having its specific categories.

BitWipe Wizard

(c) Copyright 2023. BitRecover Software. All Rights Reserved.

Wipe Options | Company Profile | Filter Options | Drive Monitor | About

Please choose an appropriate Wiping method

Low

- Zero (1 Pass)
- BitWipe - Simple (1 Pass)
- Random & Zero (2 Passes)
- Russian - GOST-R-50739-95 (2 Passes)
- Random (1 Pass)
- Zero & Random (2 Passes)
- BitWipe - Medium (2 Passes)
- Pseudo-Random & Zeroes (2 Passes)

Medium

- US DoD / US Air Force (3 Passes)
- US Navy - RLL (3 Passes)
- Microsoft Cipher (3 Passes)
- British HMG IS5 (3 Passes)
- US Navy - MFM (3 Passes)
- NCSG-TG-025 (3 passes)
- Bit Toggle (4 Passes)
- BitWipe - Secure (4 Passes)

High

- NATO Standard (7 Passes)
- B.Schneier's Algorithm (7 Passes)
- Peter Gutmann (35 Passes)

Wipe Method as Default

Save Settings

?

Buy Now

Register

< Previous

Next >

32°C
Haze



Search

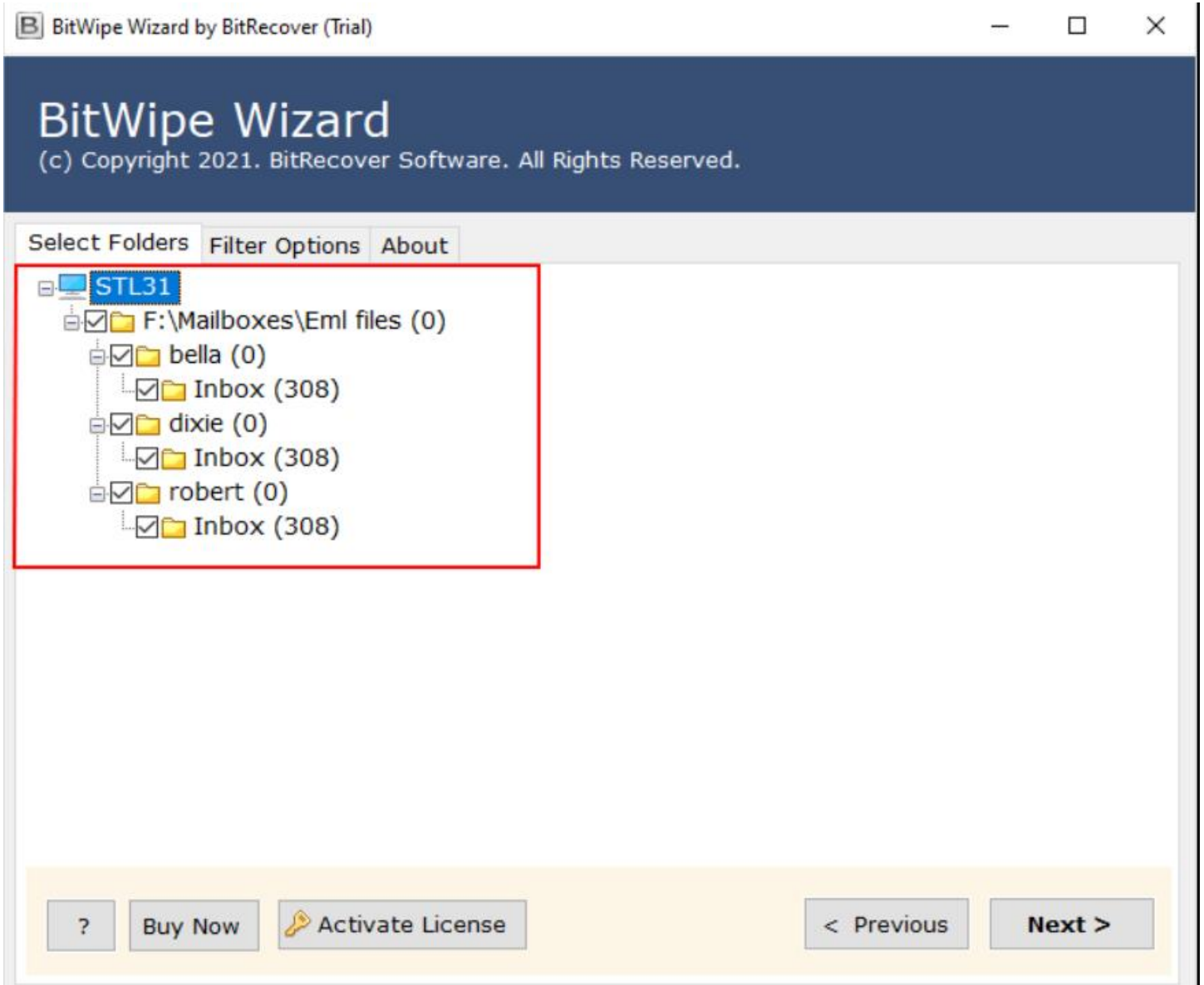


ENG
IN



18:20
26-09-2024

Step 5: Users can add details for custom data wipe certificate management.



Step 6: You can use advance settings for filter wiping if you want to wipe data according to some specific conditions.

BitWipe Wizard

(c) Copyright 2023. BitRecover Software. All Rights Reserved.

Wipe Options | Company Profile | Filter Options | Drive Monitor | About

Use Advance Settings for Filter Wiping

Date Range

10 September 2024 - 26 September 2024

File Mask

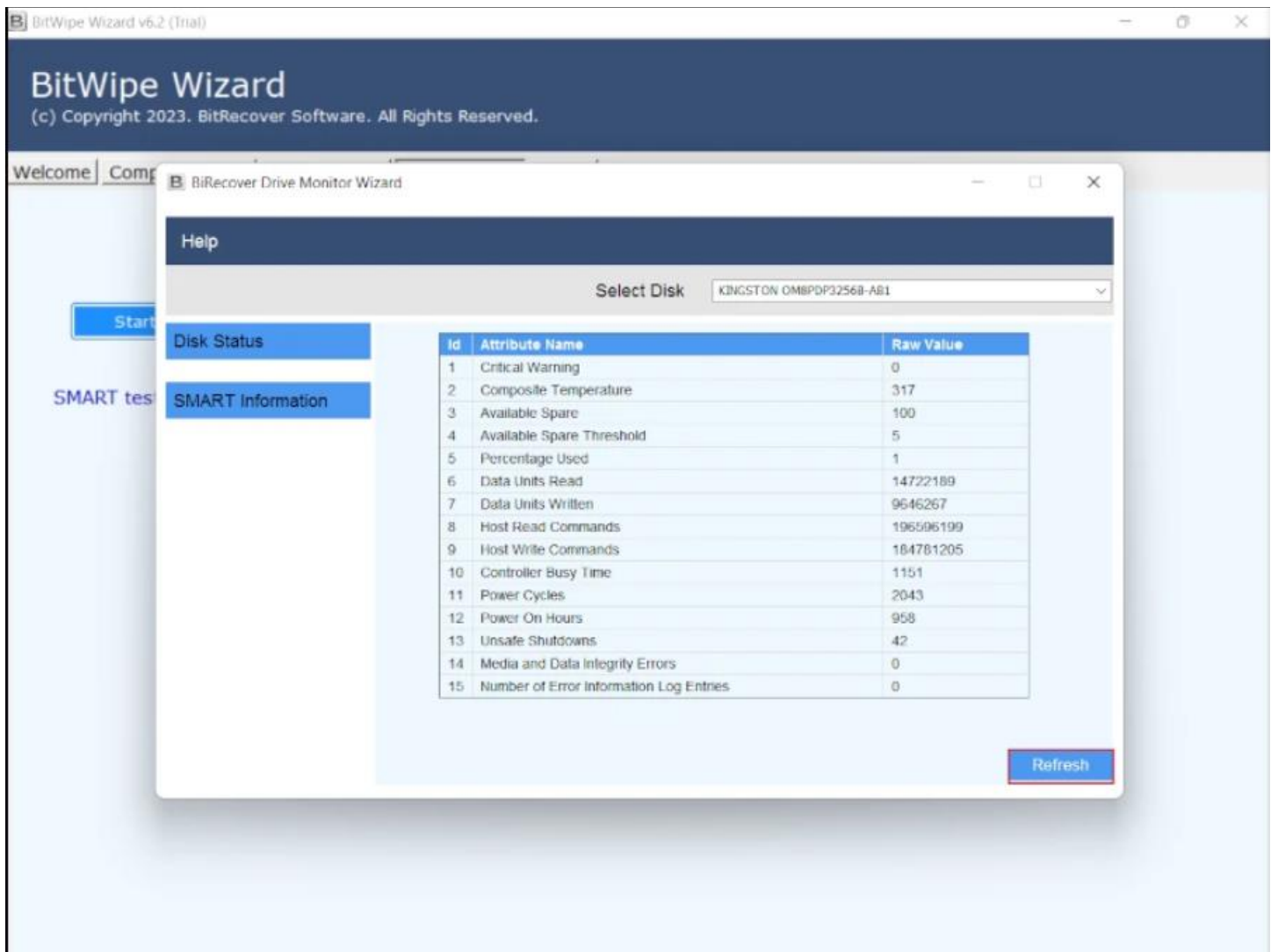
*GIF

For e.g. - *(For All Files & Folders) or *.jpg,*.gif

Overwrite Data Text

DeleteData using --- BR ----

Step 7: You also get the drive monitor functionality as an additional feature of this data wipe tool.



By following the above 7 steps, you can securely wipe your sensitive data using the BitWipe Tool. A standout feature of this software is its compliance with Department of Defense standards for data sanitization, guaranteeing that deleted data cannot be recovered. Its ability to erase files, folders and entire drives makes it an essential tool for maintaining privacy and security.

Conclusion

Thus, whether you want to permanently erase data from hard drive or SSD or any sort of memory card, this BitWipe Software got you covered with all the facilities. By utilizing advanced data wiping algorithms that adhere to Department of Defense Standards, it ensures that deleted files are beyond recovery, providing peace of mind when handling confidential information of any sort.