

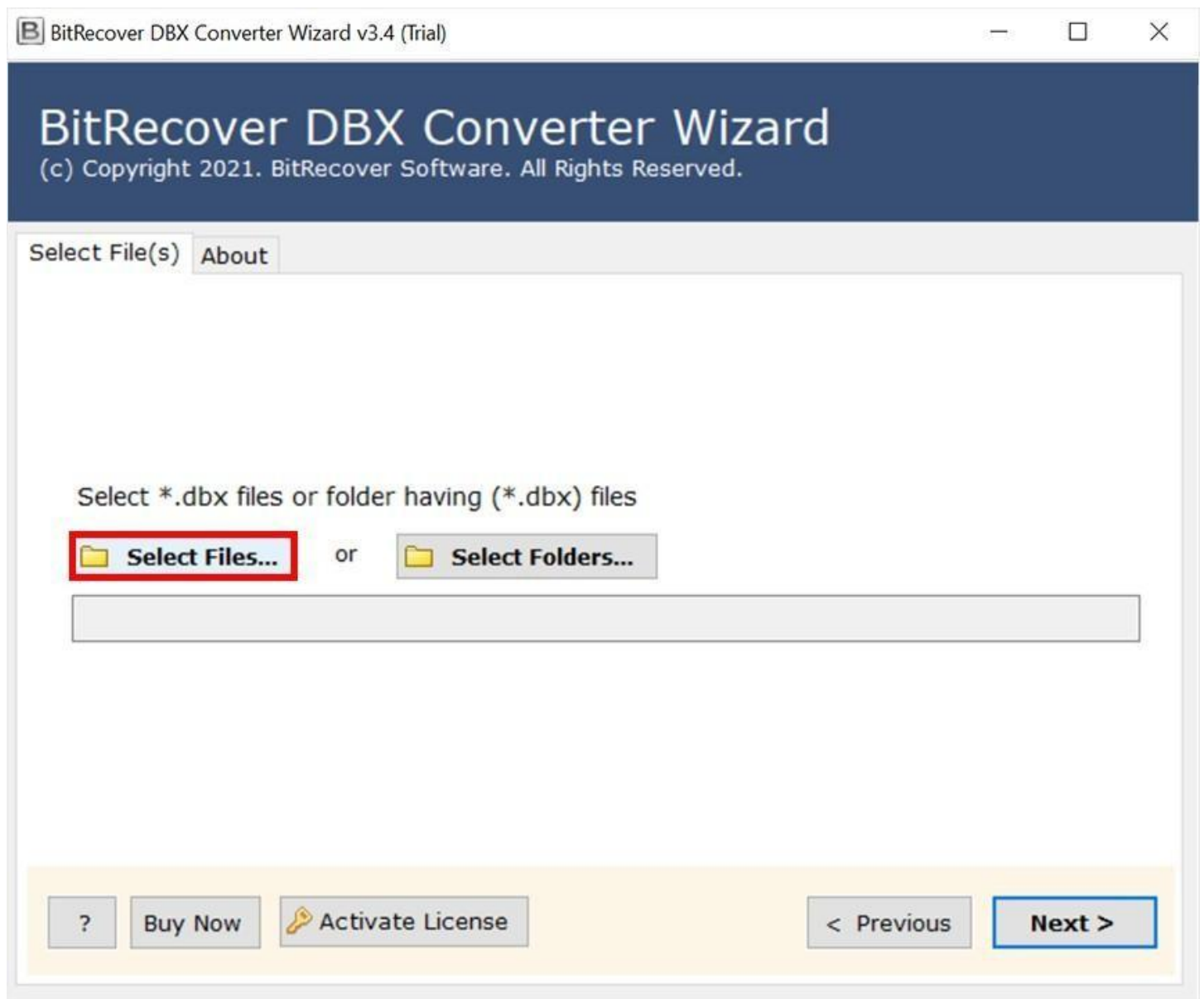
BitRecover for DBX to EML Converter

Batch Convert Outlook Express DBX emails to EML format

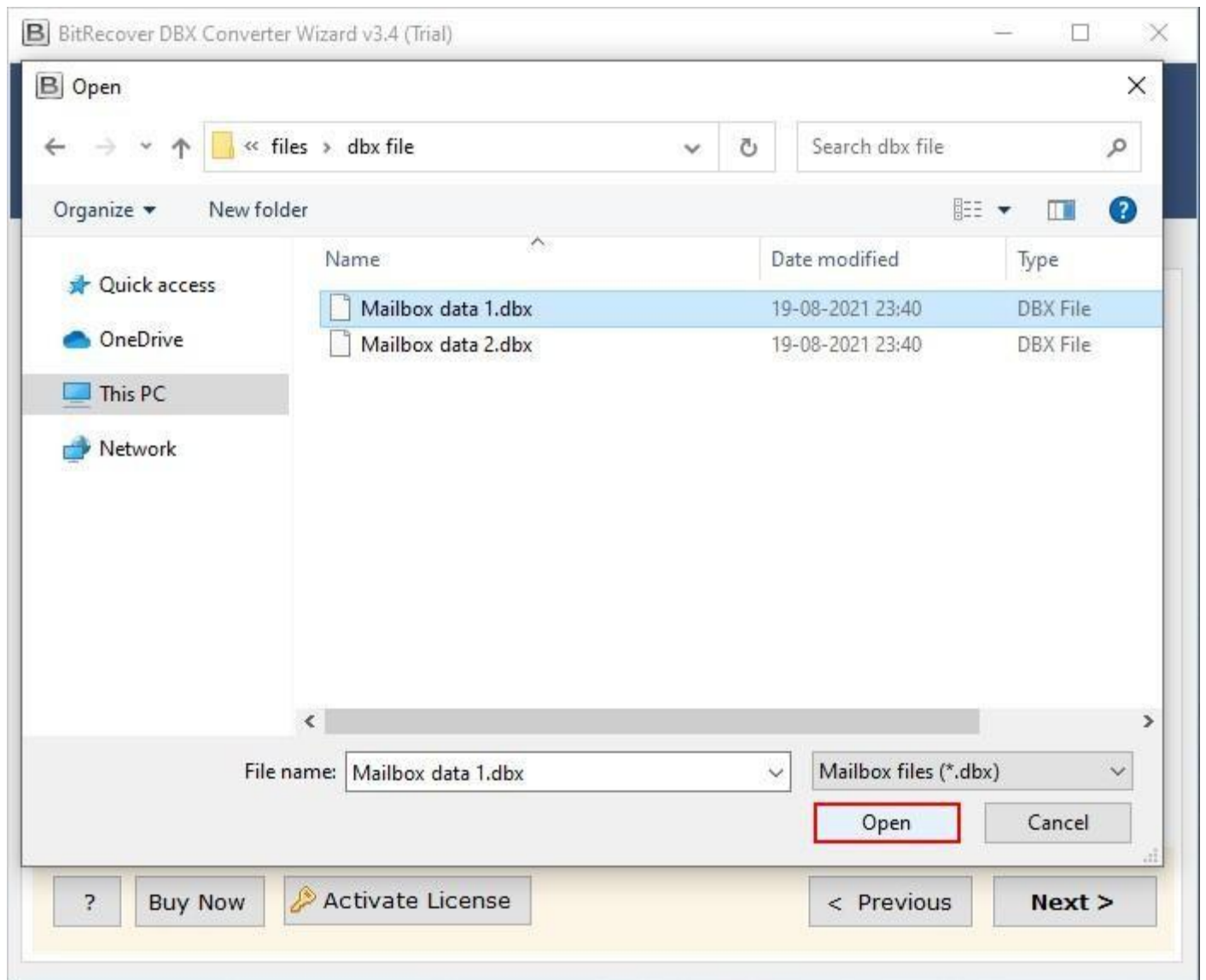
Managing emails from legacy clients like Outlook Express can be challenging, especially when transitioning to modern platforms. This is where the DBX to EML Converter comes into play which basically simplifies the process by enabling users to convert DBX files into EML as well as other formats. This ensures seamless access and management of your emails across different platforms.

Visit the official page: [DBX to EML Converter](#)

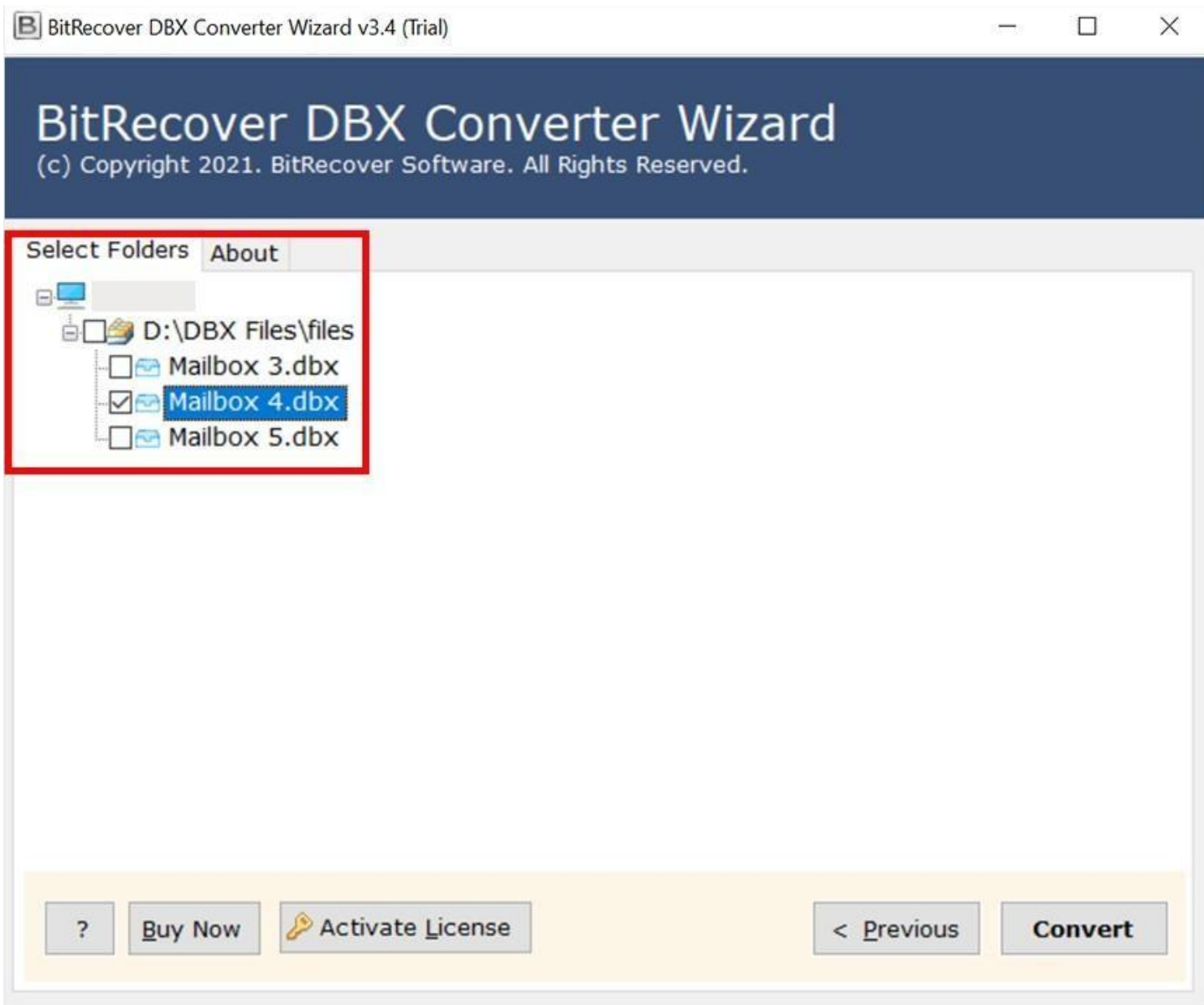
Step 1: Download the DBX to EML Converter and open it. If you wish to select individual files, click on the **Select Files** option or if you wish to select folder, click on the **Select Folders** option.



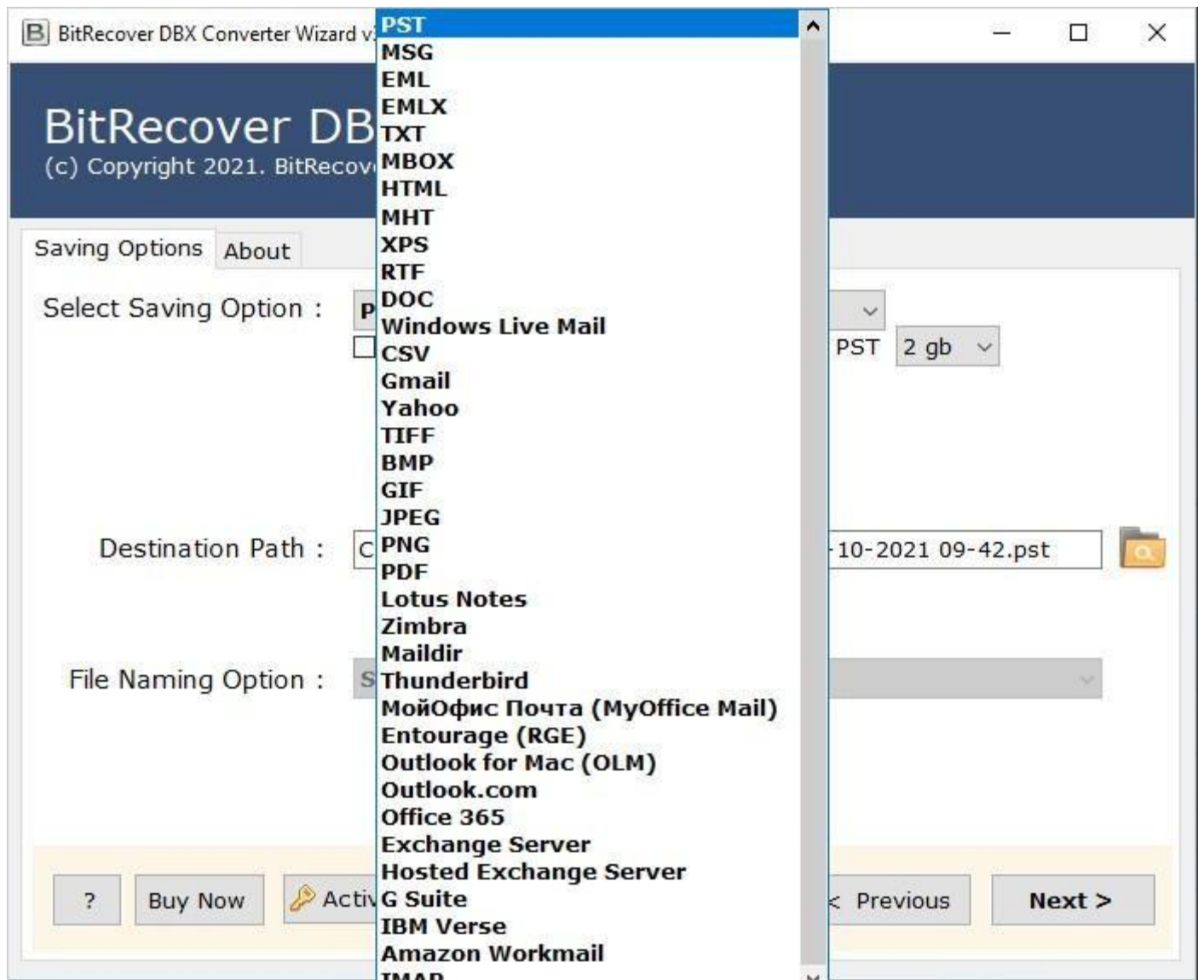
Step 2: Select the files which you wish to convert and click on the **Open** button.



Step 3: The software panel will display the list of all the files/folders, tick the required ones and click on the **Convert** button.



Step 4: Choose a format as the saving option for the converted files from the displayed list of 30+ available options.



Step 5: Choose destination path to save resultant data and click Convert button to start conversion.

By following the above 5 steps, you can effectively convert your DBX files to EML format. The software's intuitive interface ensures that even users with limited technical expertise can navigate the conversion process with ease. Its compatibility with multiple output formats makes it a versatile choice for users seeking to manage their Outlook Express emails across different platforms.

Conclusion

Thus, whether you are migrating to a new email client, archiving old emails, or consolidating data, this tool offers a reliable and user-friendly solution. A notable feature of this software is its ability to maintain the original folder hierarchy and email properties during the conversion process, ensuring that your data remains organized and intact. Additionally, the tool supports batch conversion, allowing you to process multiple DBX files simultaneously, thereby saving time and effort.