

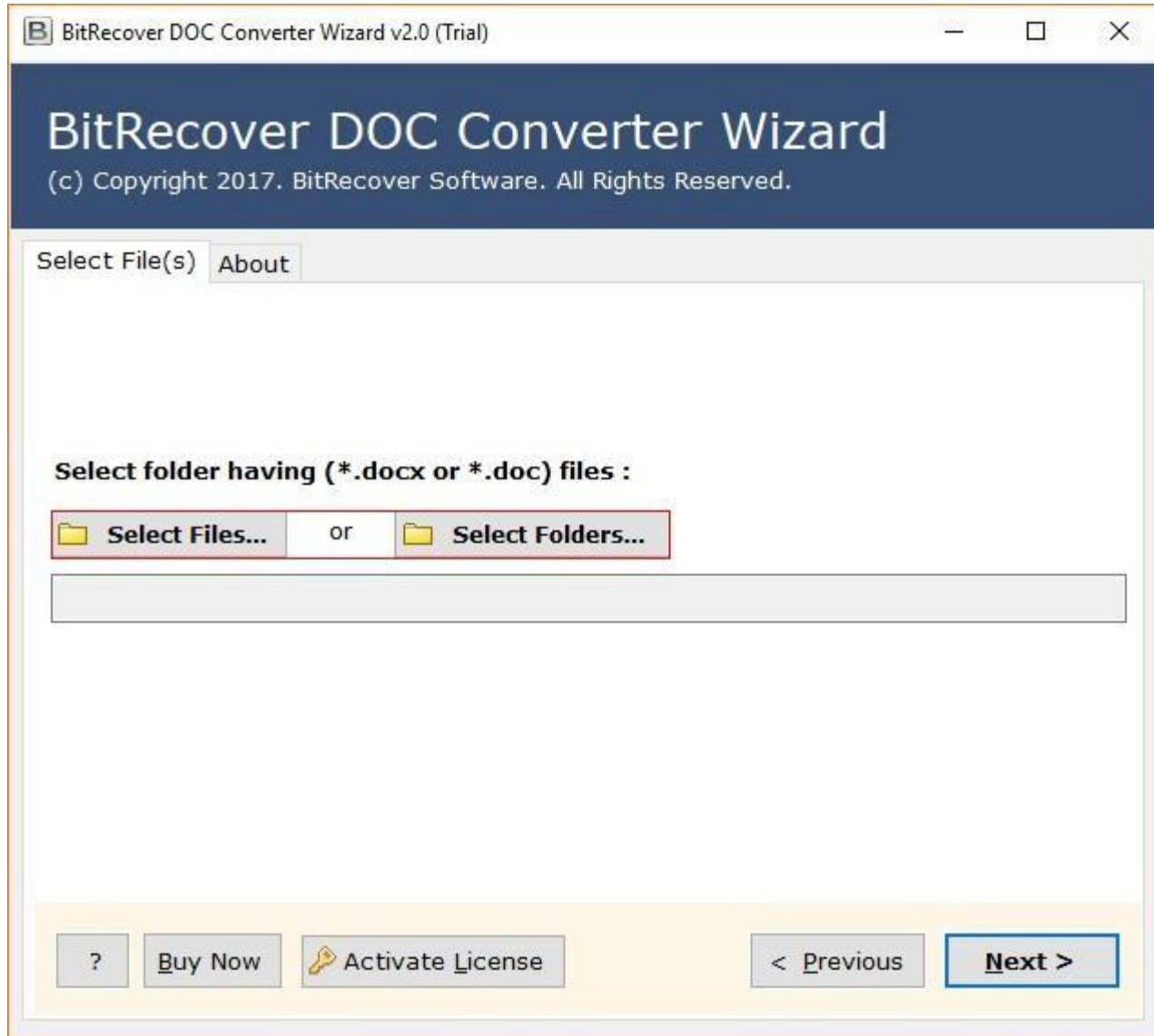
BitRecover for DOC to TIFF Converter

Convert Word DOC Files to TIFF and Other Formats

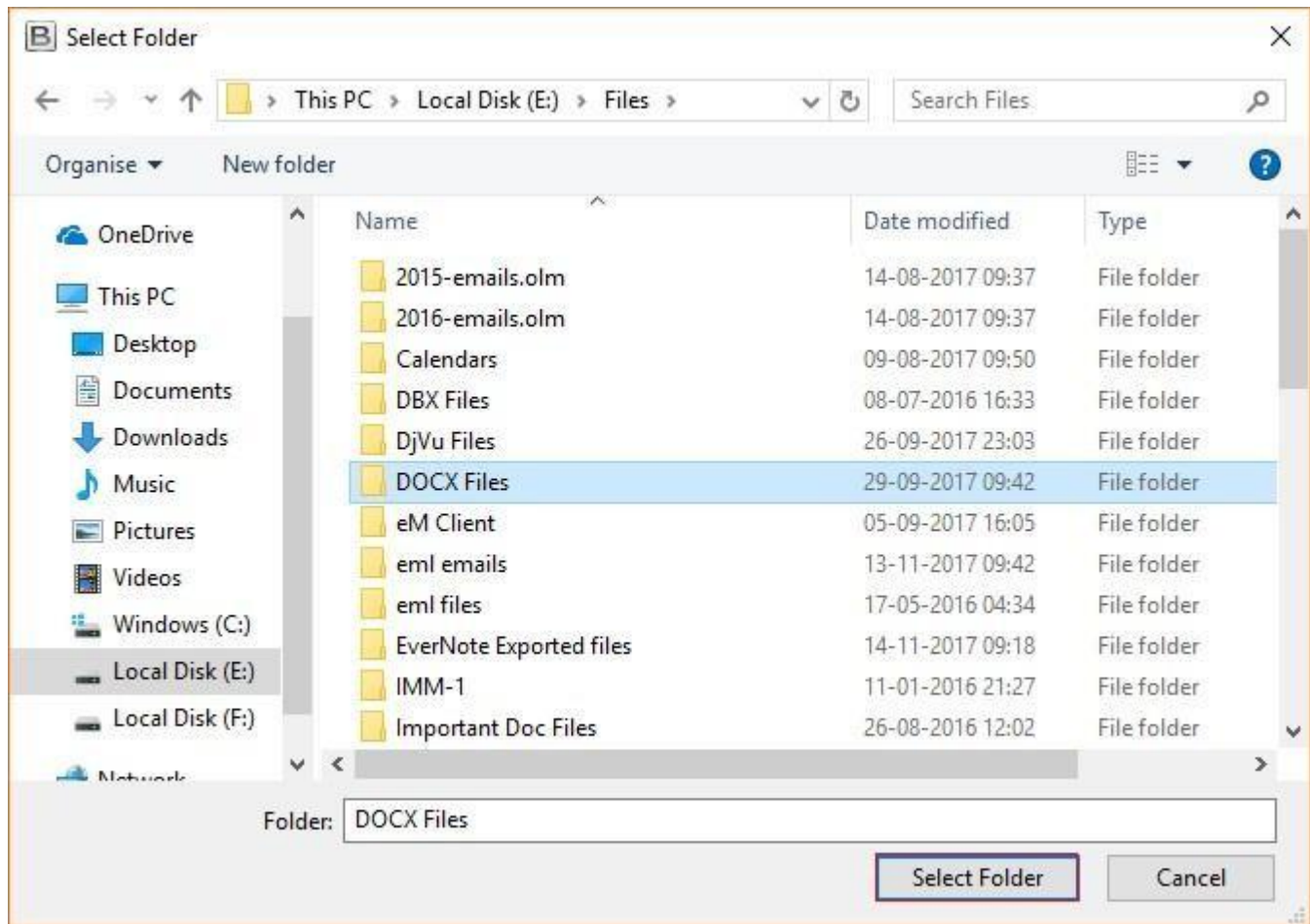
Managing and converting DOC and DOCX files is essential for users who need to access and share document data across various platforms and applications. This is where the DOC to TIFF Converter comes into play which basically simplifies this process by enabling users to convert Microsoft Word DOC to TIFF format. This ensures that your document data is versatile and maintains its integrity across different environments.

Visit the official page: [DOC to TIFF Converter](#)

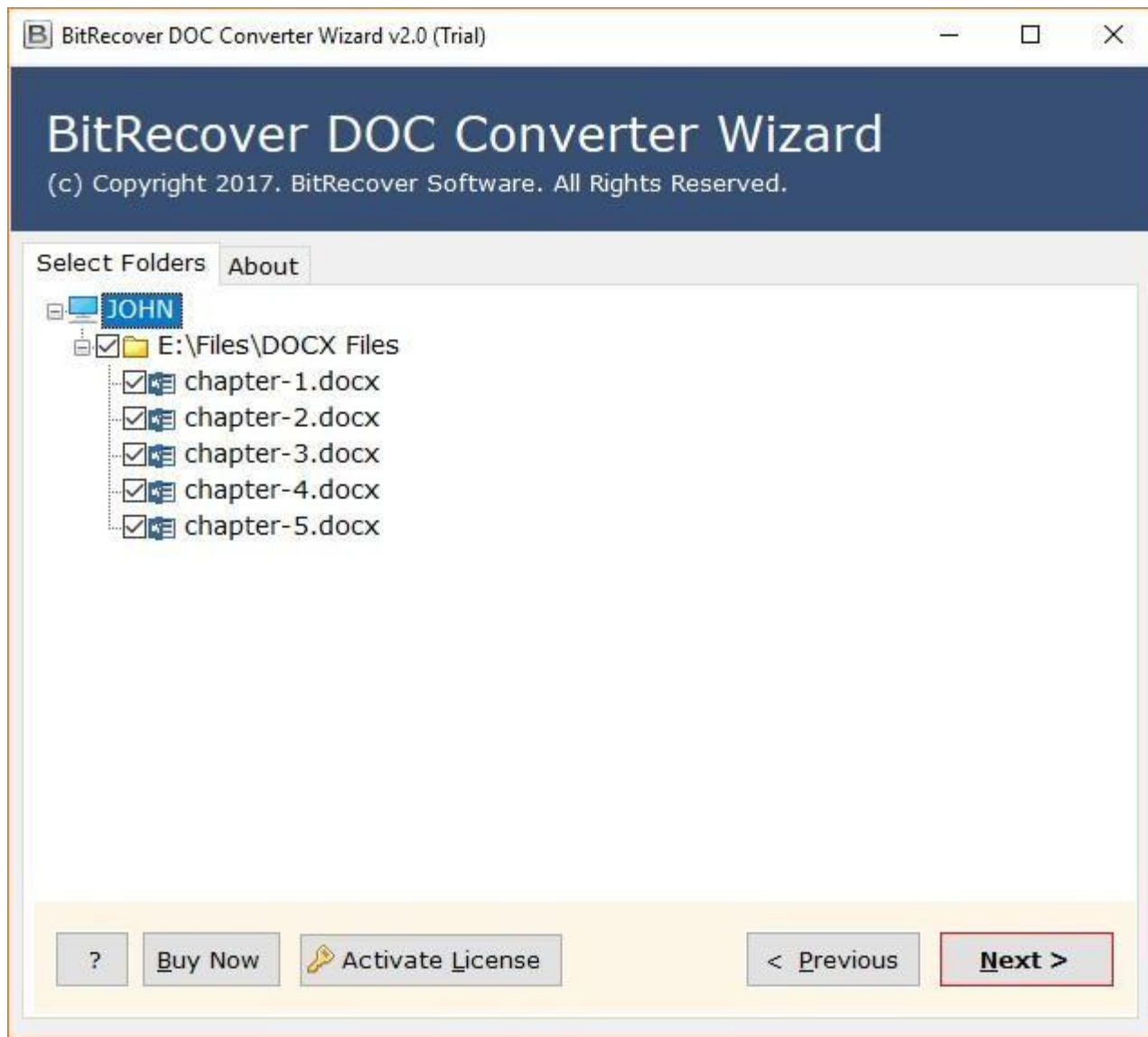
Step 1: Download the DOC to TIFF Converter and open it. If you wish to upload files, click on the **Select Files** option or if you wish to upload folders, click on the **Select Folders** option.



Step 2: Select the files/folders which you wish to upload.



Step 3: Tick the required files/folders and click on **Next** button.



Step 4: Select a saving option format for the converted files from the displayed list of options.



Step 5: Select a destination path to save the converted files by clicking on the **Folder** icon. If you wish to save the files in the same source folder, tick the **Save Converted Messages in Same Source Folder** option. After you are done selecting a destination path, click on the **Convert** button.

By following the above 5 steps, you can efficiently convert your DOC files to TIFF format. The software's intuitive interface ensures that even users with limited technical expertise can navigate the conversion process with ease. Its compatibility with various output formats makes it a versatile choice for users seeking to manage their document files across different platforms.

Conclusion

Thus, whether you are preparing documents for distribution, archiving, or sharing in universally accessible formats, this tool offers a reliable and user-friendly solution. A notable feature of this software is its ability to maintain the original

formatting and quality during the conversion process, ensuring that your documents remain intact. Additionally, the tool supports batch conversion, allowing you to process multiple DOC and DOCX files simultaneously, thereby saving time and effort.