

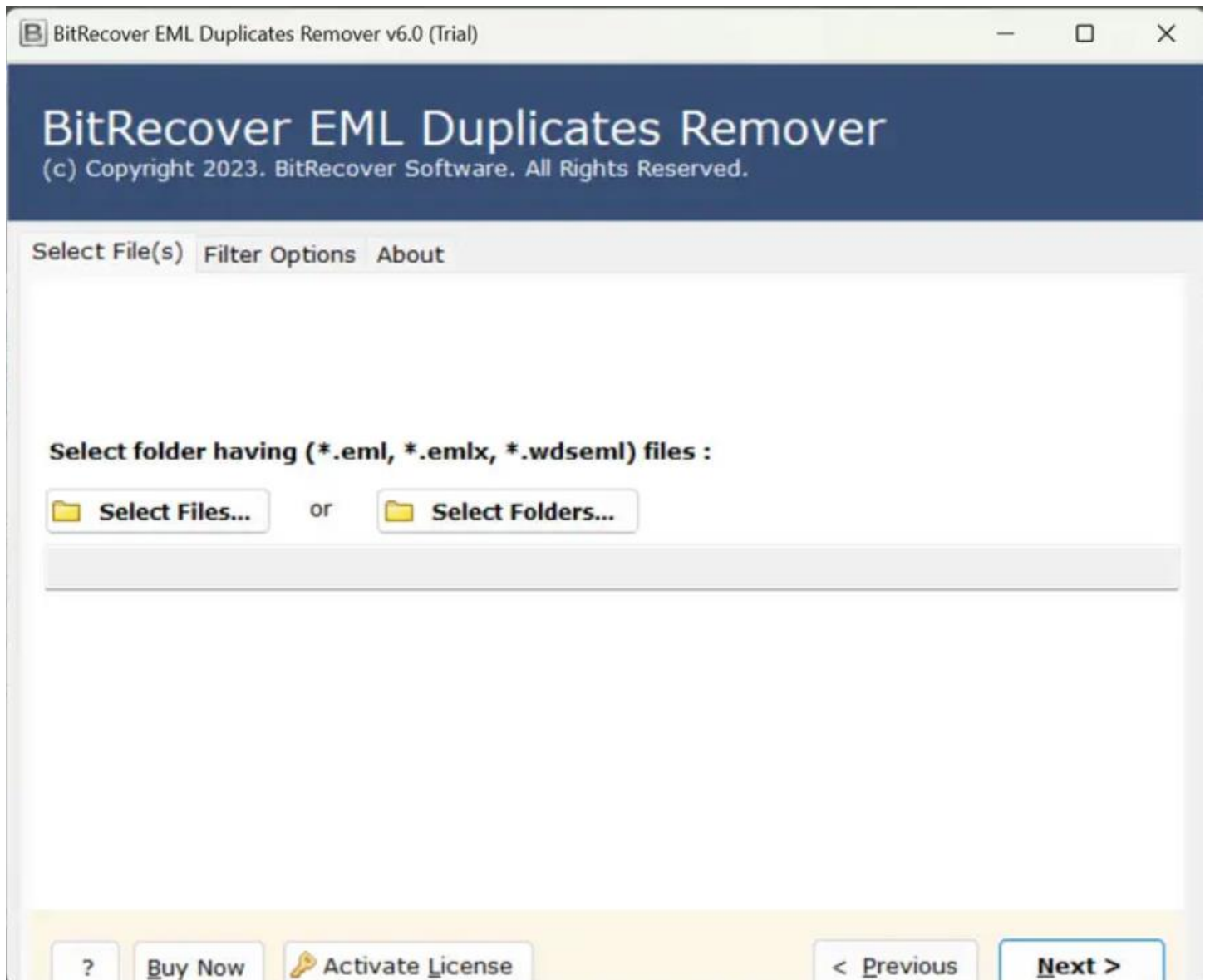
## BitRecover EML Duplicate Remover Tool

Best Tool to find and Fix Duplicate Items from EML Files

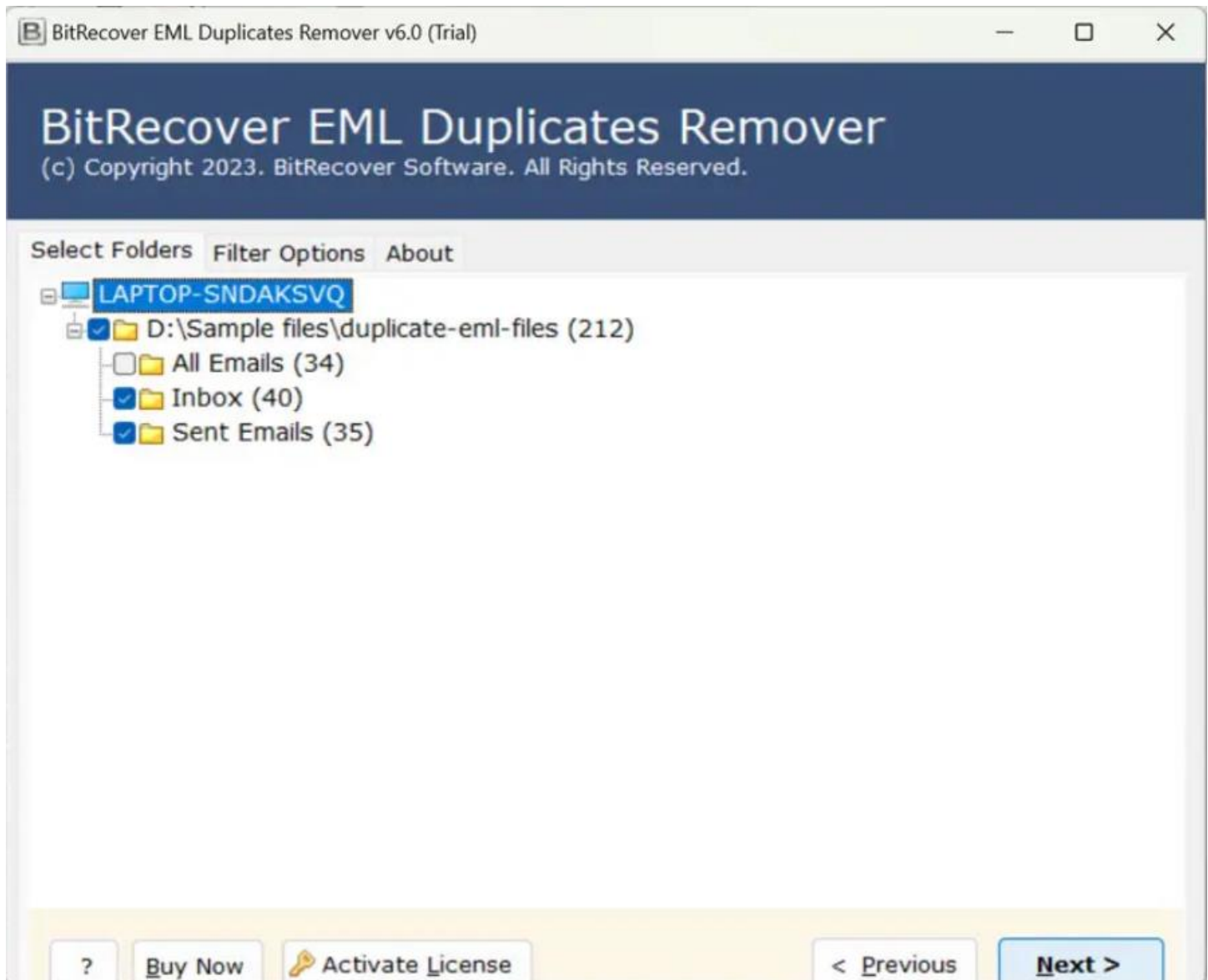
Managing a large collection of EML files can become challenging when duplicate emails accumulate, leading to increased storage consumption and potential confusion. This is where the EML Duplicate Remover comes into play which basically offers a comprehensive solution by enabling users to efficiently remove duplicate EML, EMLX, and WDSEML files from various email clients, including Windows Live Mail, eM Client, Thunderbird, Apple Mail, and others. This ensures streamlined email management and optimized storage utilization.

Visit the official page: [BitRecover EML Duplicate Remover Wizard](#)

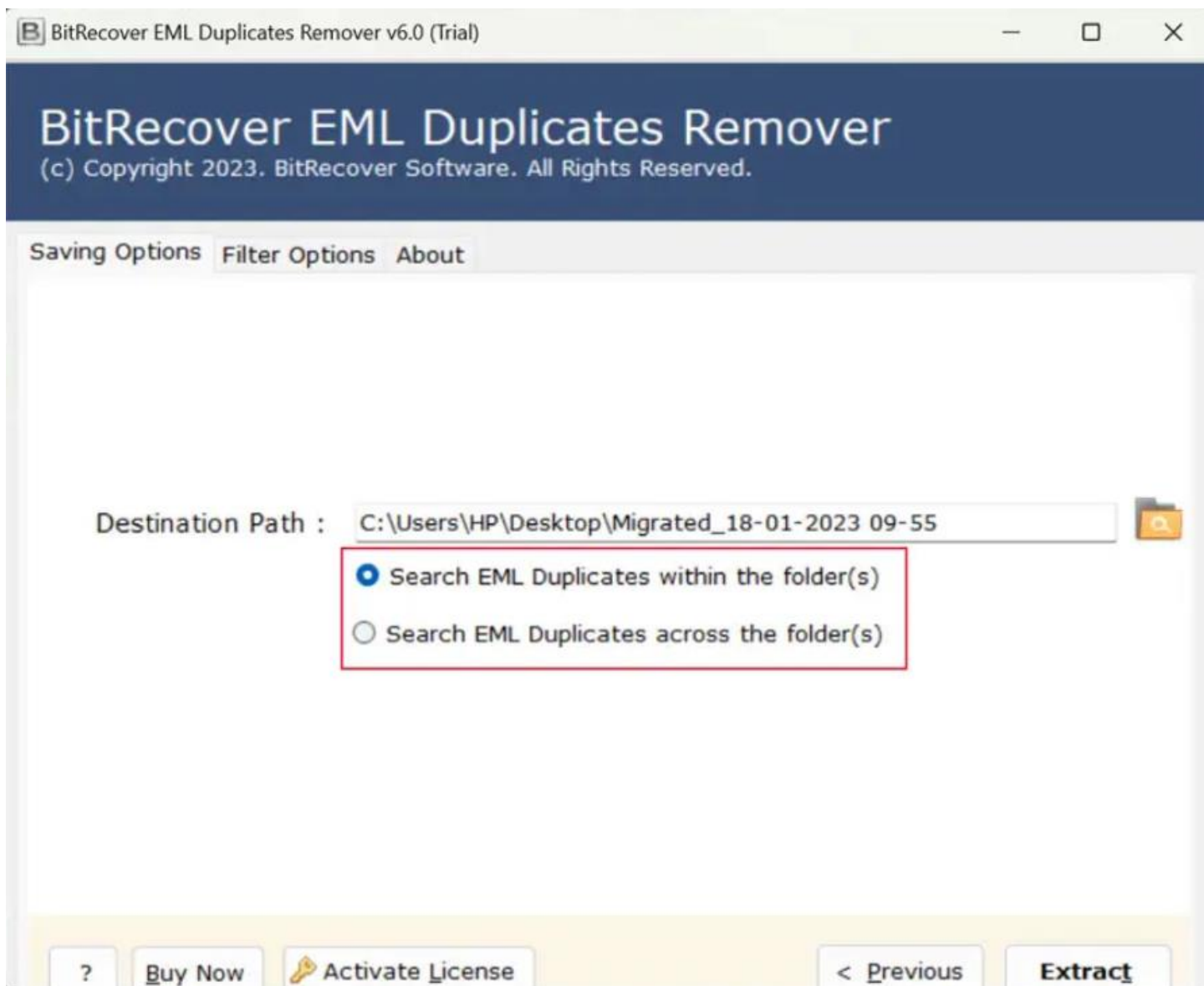
**Step 1: Download** the EML Duplicate Remover Tool and open it. If you wish to upload individual files, click on the **Select Files** option or if you wish to upload folders, click on the **Select Folders** option.



**Step 2:** Tick the required files/folders and click on the **Next** button.



**Step 3:** If you wish to search EML Duplicates within a folder or outside the folder, you can simply use the options provided in the software panel.



**Step 4:** If you wish to apply some specific filters to the files, the software panel has the **Filter Options** in which you can use advance settings such as **Date Range, From, To, Subject, Exclude Folders** and so on.

BitRecover EML Duplicates Remover v6.0 (Trial)

# BitRecover EML Duplicates Remover

(c) Copyright 2023. BitRecover Software. All Rights Reserved.

Saving Options | Filter Options | About

☒ Use Advance Settings for Filter Saving

☐ Date Range: 18 January 2023 - 18 January 2023

☐ From:

☐ To:

☐ Subject:

☐ Exclude Folders: WhiteList,BlackList

e.g. WhiteList,BlackList etc.

☐ Organizer: ne@ne.com  
Default used for Office 365 & Exchange Calendars for blank entries

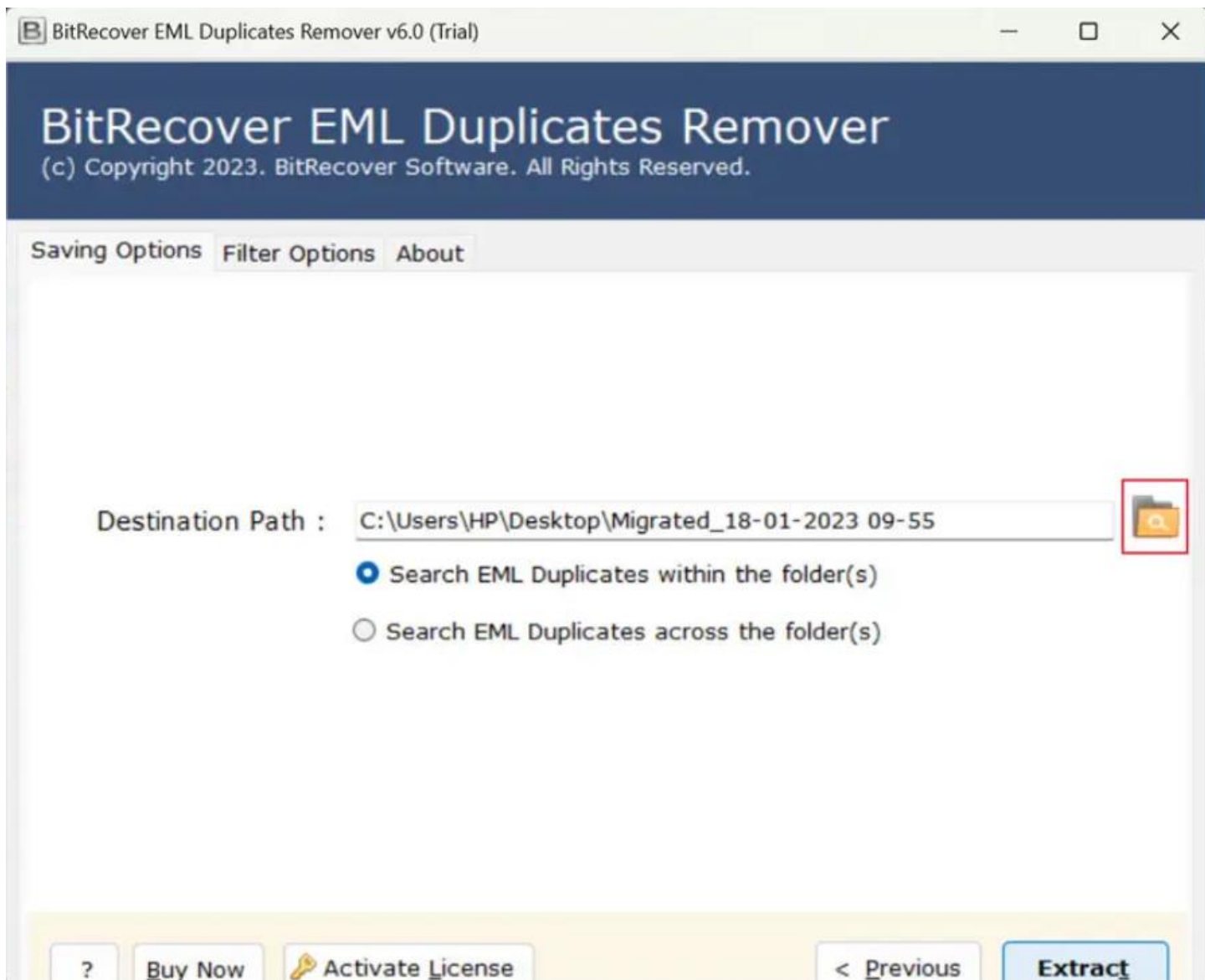
☐ Root Folder: Migrated

☒ Use Selective Export Settings for Extracting Email Address

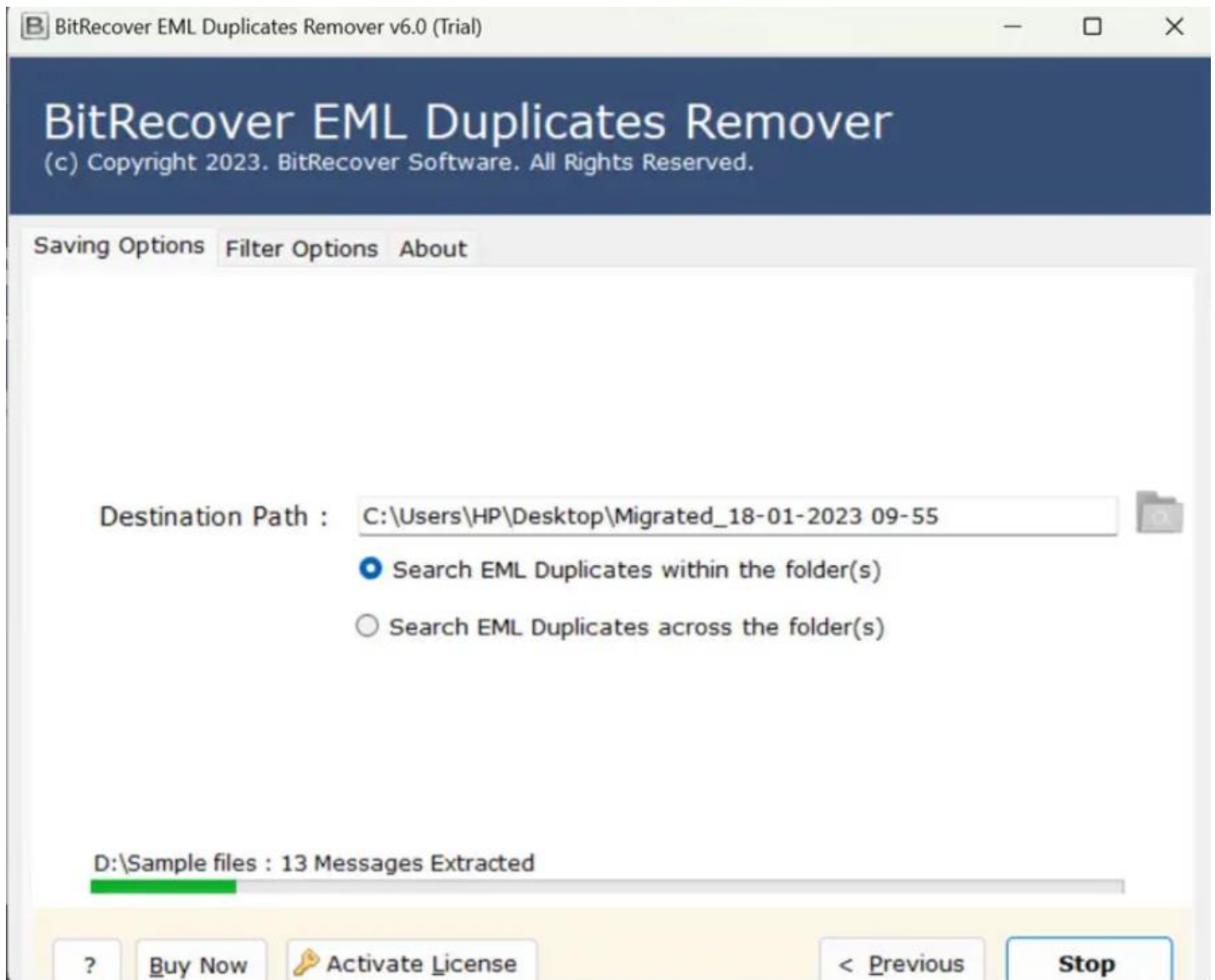
☒ From ☒ To ☒ CC ☒ BCC ☒ Body

☐ Exclude Empty Folders

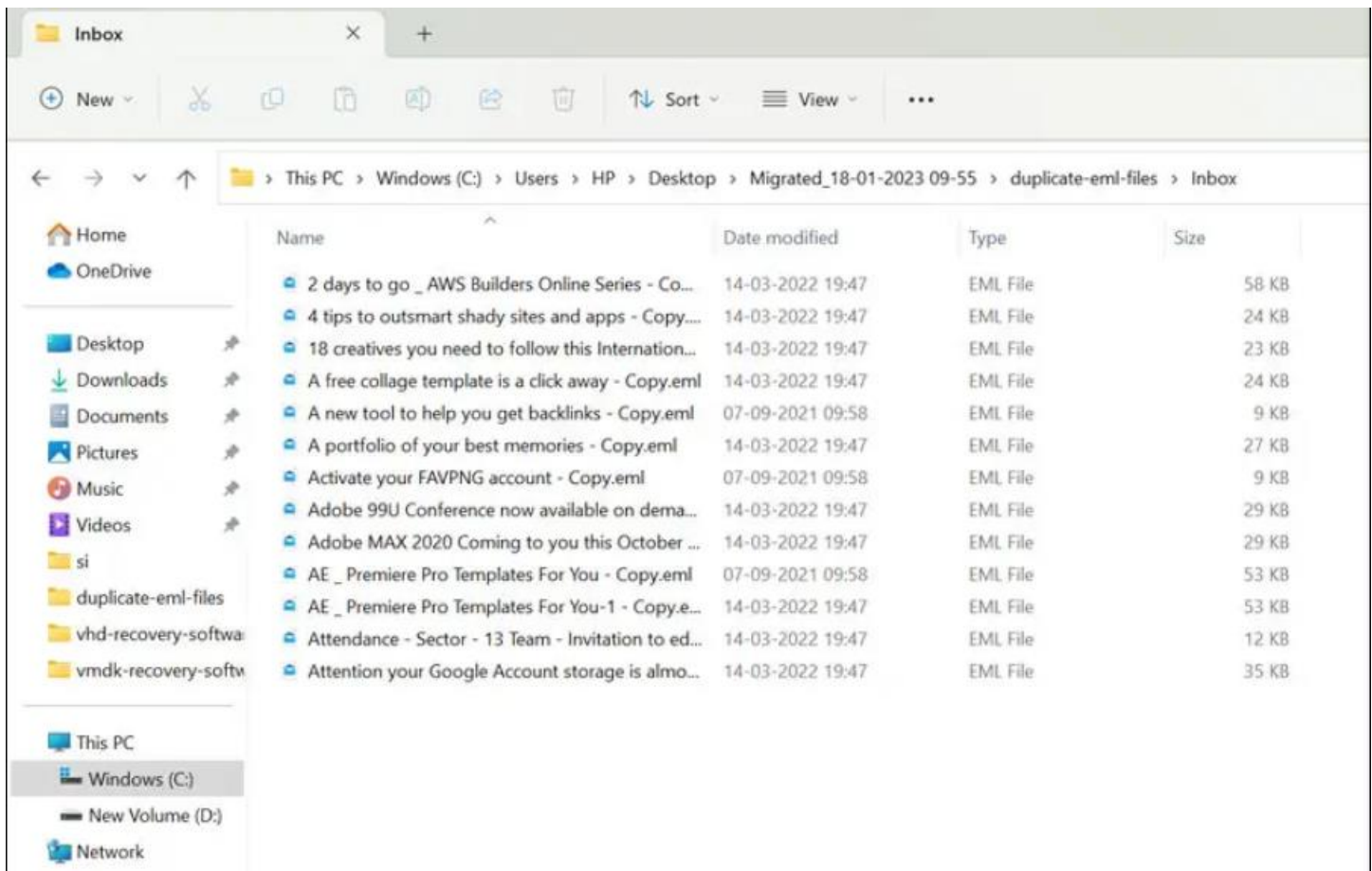
**Step 5:** Choose a destination path by clicking on the **Folder** icon for saving the resultant data.



**Step 6:** Let the software complete the removal process. You can also see the live progress report in the software panel itself.



**Step 7:** You can access the resultant data by simply navigating to the destination path.



By following the above 7 steps, users can efficiently eliminate duplicate emails using the EML Duplicate Remover Tool. The software provides two modes for removing duplicates: “Search EML duplicates within the folder(s)” and “Search EML duplicates across the folder(s).” Additionally, it offers advanced filters to remove duplicates based on criteria such as date range, sender and receive email addresses, and specific folders to include or exclude. Its batch processing capability ensures that even users with extensive collections of EML files can manage the deduplication process seamlessly.

## Conclusion

Thus, this EML Duplicate Remover provides a reliable and efficient solution for removing duplicate emails from EML files. Its user-friendly design, combined with features like advanced filtering options and batch processing, ensures that users can perform the deduplication process with ease and precision. By maintaining the integrity of your email data and optimizing storage space, this tool is ideal for both individual and organizational use.