

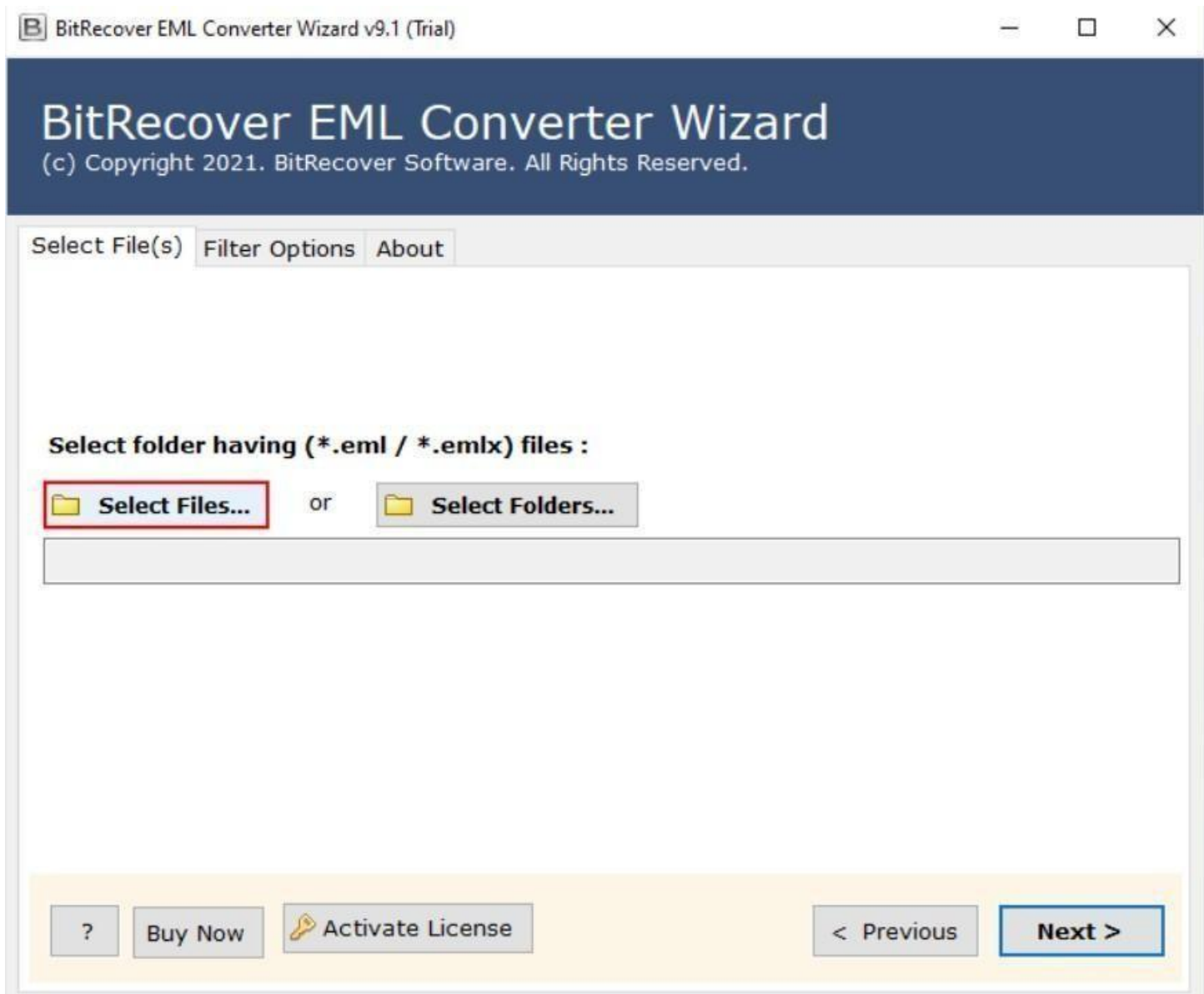
BitRecover EML to HTML Converter

Convert EML files to HTML as well as other file formats

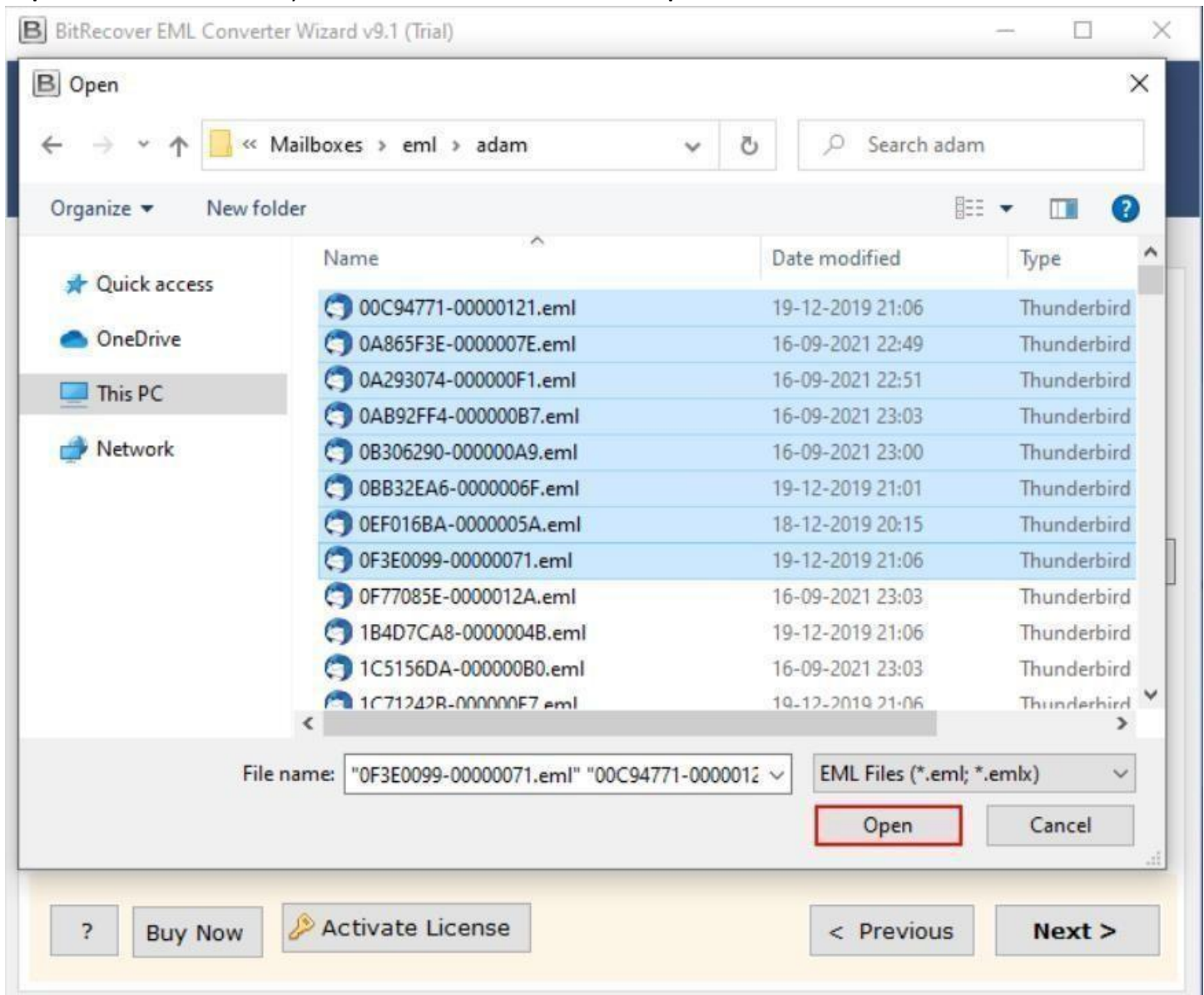
In our daily digital communications, EML files are commonly used to store individual email messages across various email clients. However, managing and accessing these files can become challenging, especially when migrating to different platforms or requiring specific formats for archiving or analysis. This is where the EML to HTML Converter comes into play which is basically a versatile tool that allows users to convert EML files into HTML as well as other formats ensuring seamless accessibility and management of email data across diverse platforms.

Visit the official page: [BitRecover EML to HTML Converter](#)

Step 1: Download the EML to HTML converter and open it. If you wish to select individual files, click on the **Select Files** option or if you wish to select folder, click on the **Select Folders** option.



Step 2: Select the files which you wish to convert and click on the **Open** button.



Step 3: The software panel will display the list of all the folders, tick the required ones and click on the **Next** button.

BitRecover EML Converter Wizard

(c) Copyright 2021. BitRecover Software. All Rights Reserved.

Select Folders Filter Options About

- Computer
- F:\Mailboxes\Eml files (0)
 - adam (0)
 - Inbox (213)
 - dove (0)
 - Inbox (213)
 - esther (0)
 - Inbox (213)
 - 凱蒂 (0)
 - Inbox (213)

?

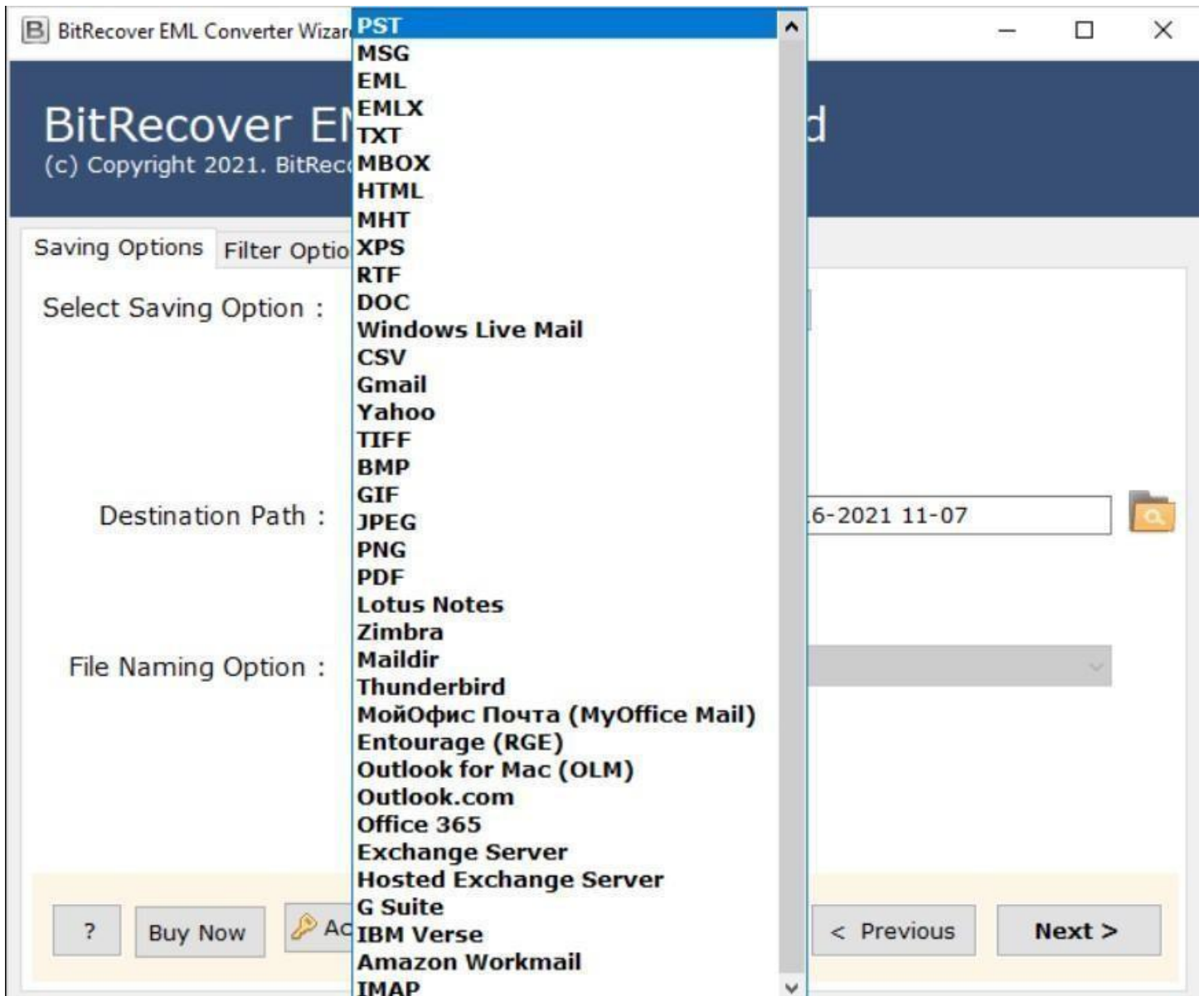
Buy Now

Activate License

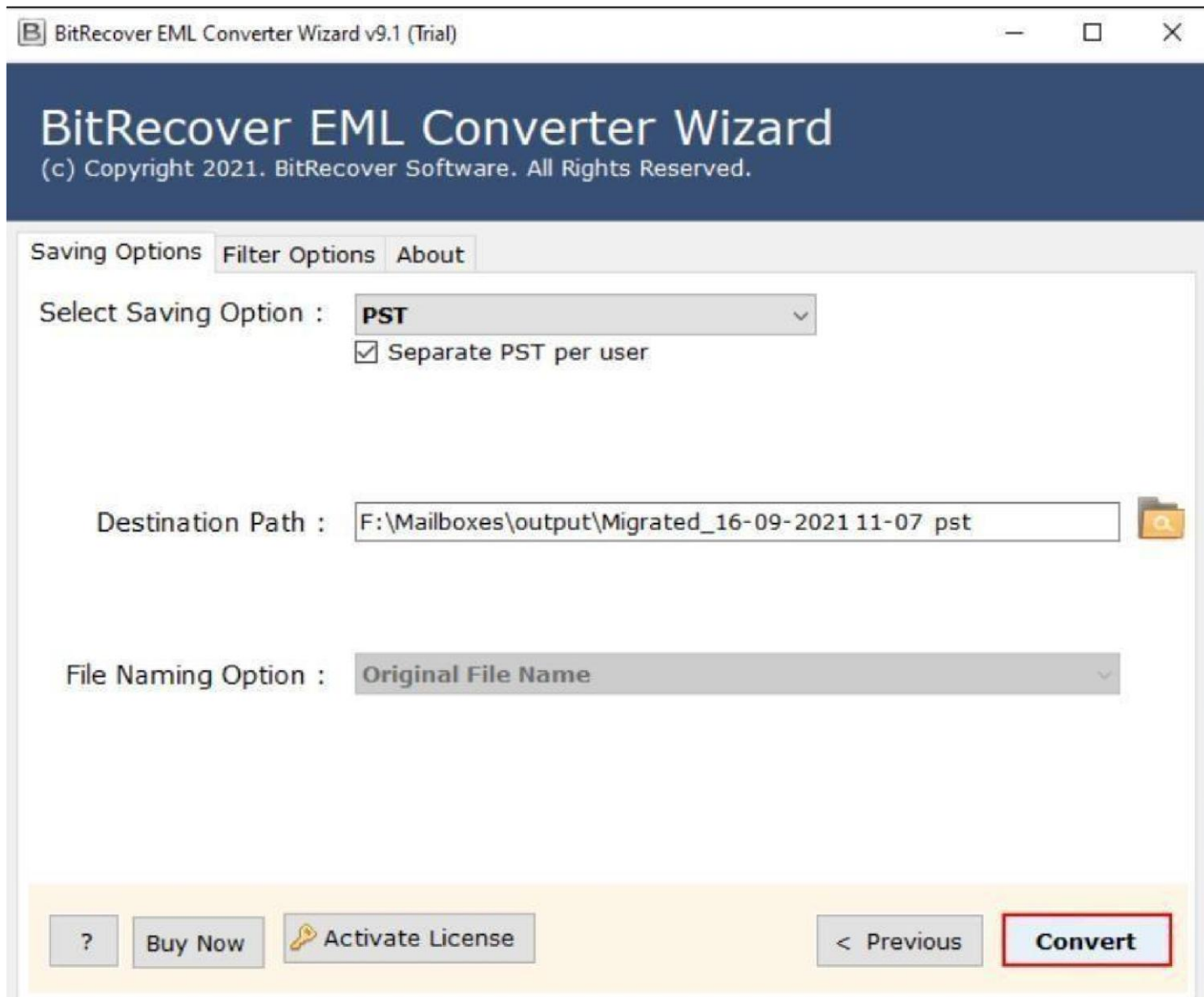
< Previous

Next >

Step 4: Choose HTML format as the saving option for the converted files from the displayed list of 38+ available options.



Step 5: Once you are done selecting the saving option and the destination path, click on the **Convert** button to start the conversion process.



By following the above 5 steps, you can effectively convert your EML files into HTML using this EML to HTML converter. A notable feature of this software is its advanced filter options, which allow you to selectively convert emails based on criteria such as date range, subject or sender providing a tailored conversion experience. Its intuitive interface ensures that even users with limited technical expertise can navigate the conversion process with ease.

Conclusion

Thus, whether you are transitioning to a new Email client, archiving your emails, or performing data analysis, this tool offers a reliable and user-friendly solution. Additionally, the tool supports batch conversion, allowing you to process multiple EML files simultaneously thereby saving time and effort. A standout feature of this software is its ability to retain the original folder hierarchy and email properties during the conversion process, ensuring that your data remains original and intact.