

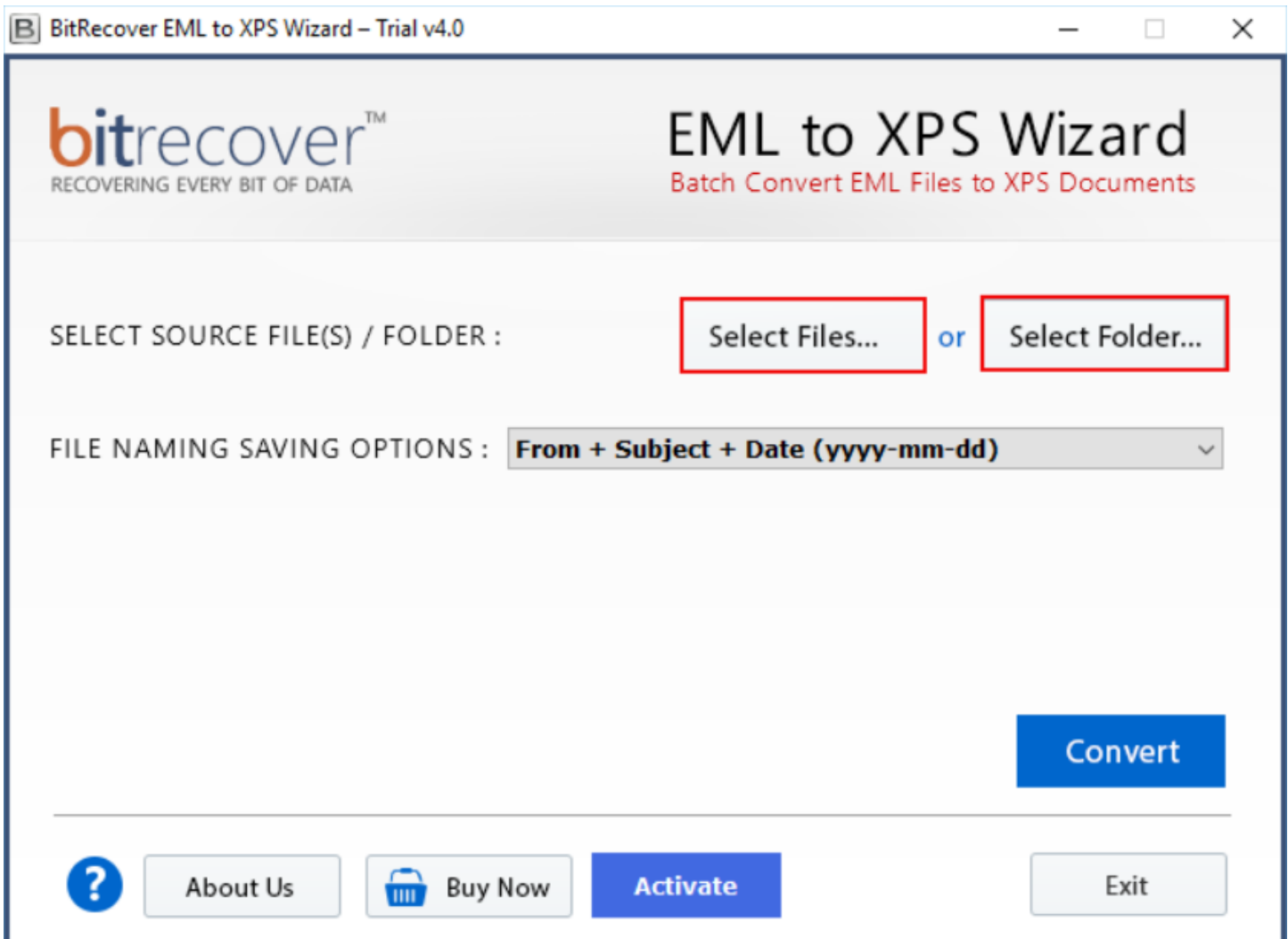
## BitRecover for EML to XPS Tool

Convert EML files to Microsoft XPS file format with proper accuracy

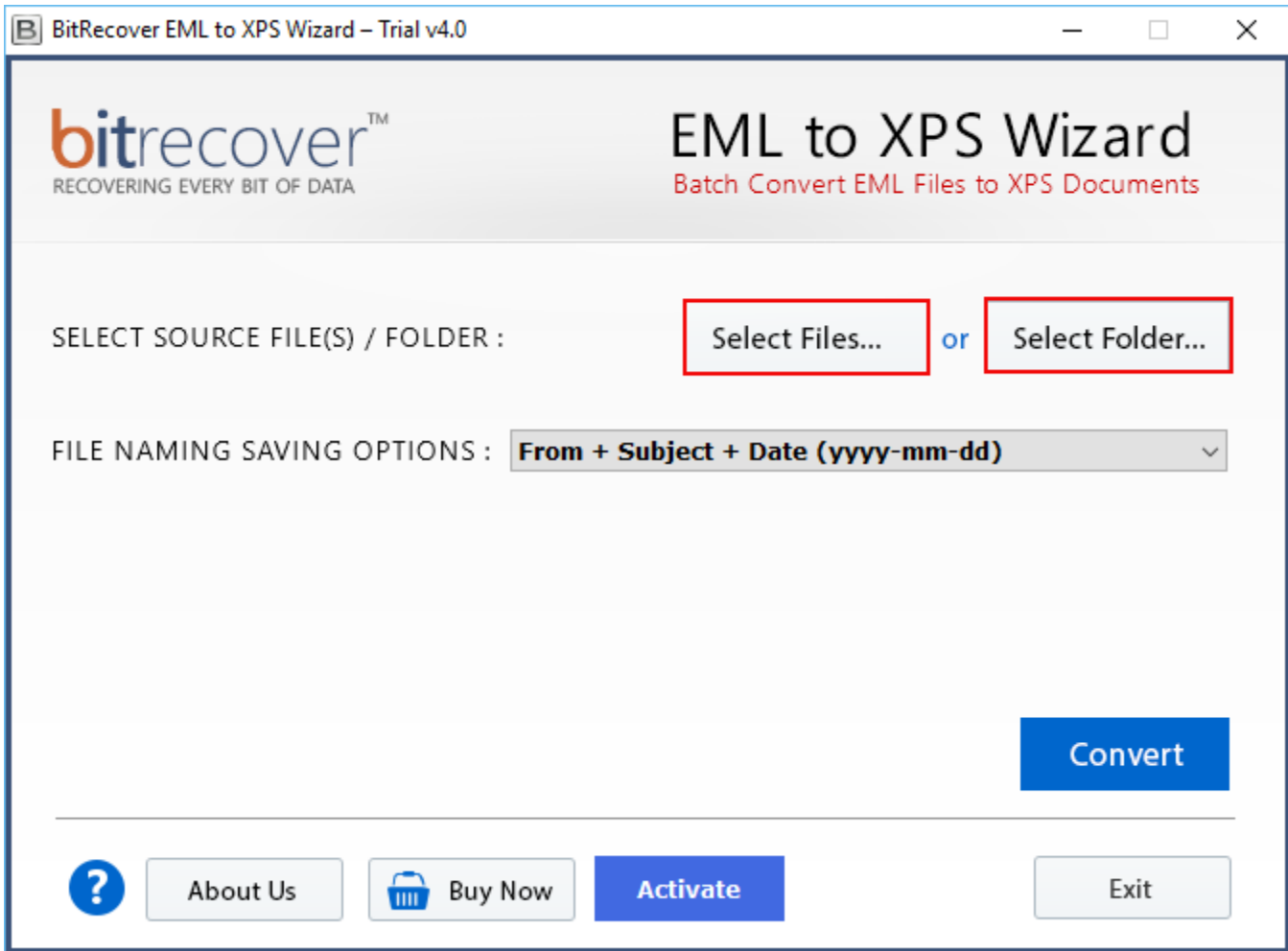
Managing and sharing email messages stored in EML format can be challenging, especially when a standardized, platform-independent format is required. This is where the EML to XPS Tool comes into play which is basically a specialized tool designed to convert EML files into XPS documents, ensuring easy viewing, printing and archiving across various platforms without compatibility issues.

Visit the official page: [BitRecover for EML to XPS Wizard](#)

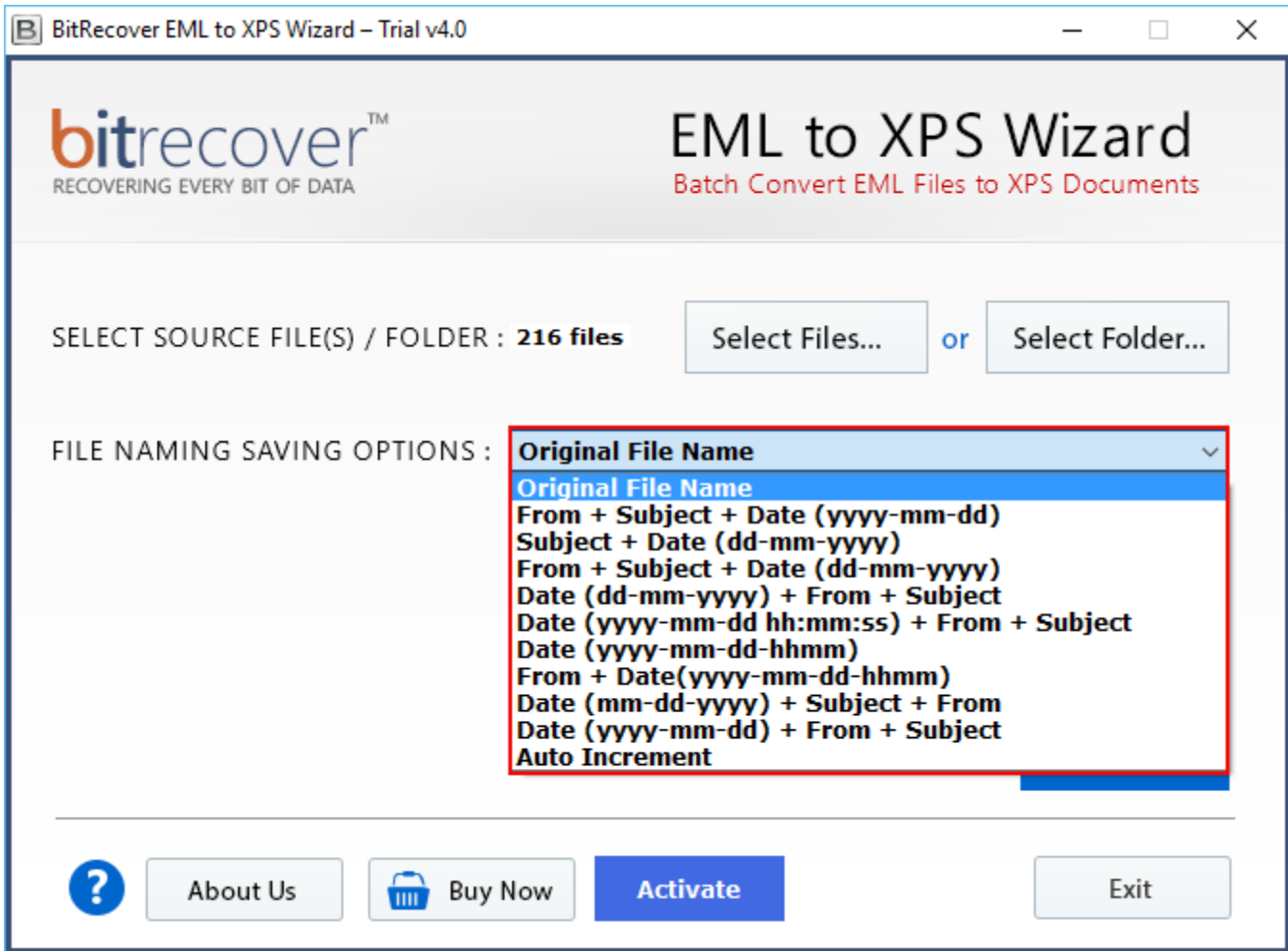
**Step 1: Download** the EML to XPS Tool and open it.



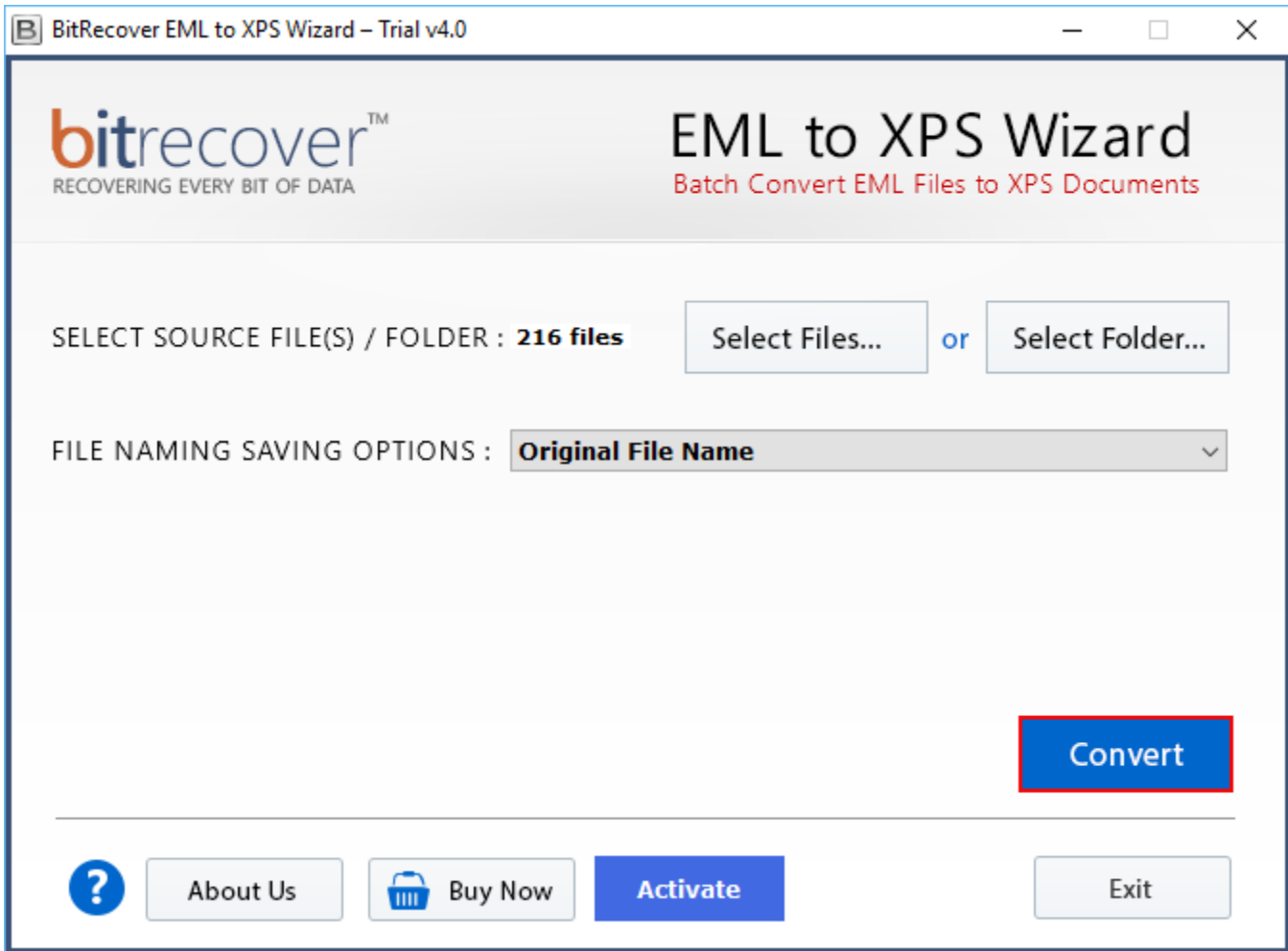
**Step 2:** If you wish to upload individual files, you can use the **Select Files** option or if you wish to upload folder, you can use the **Select Folder** option.



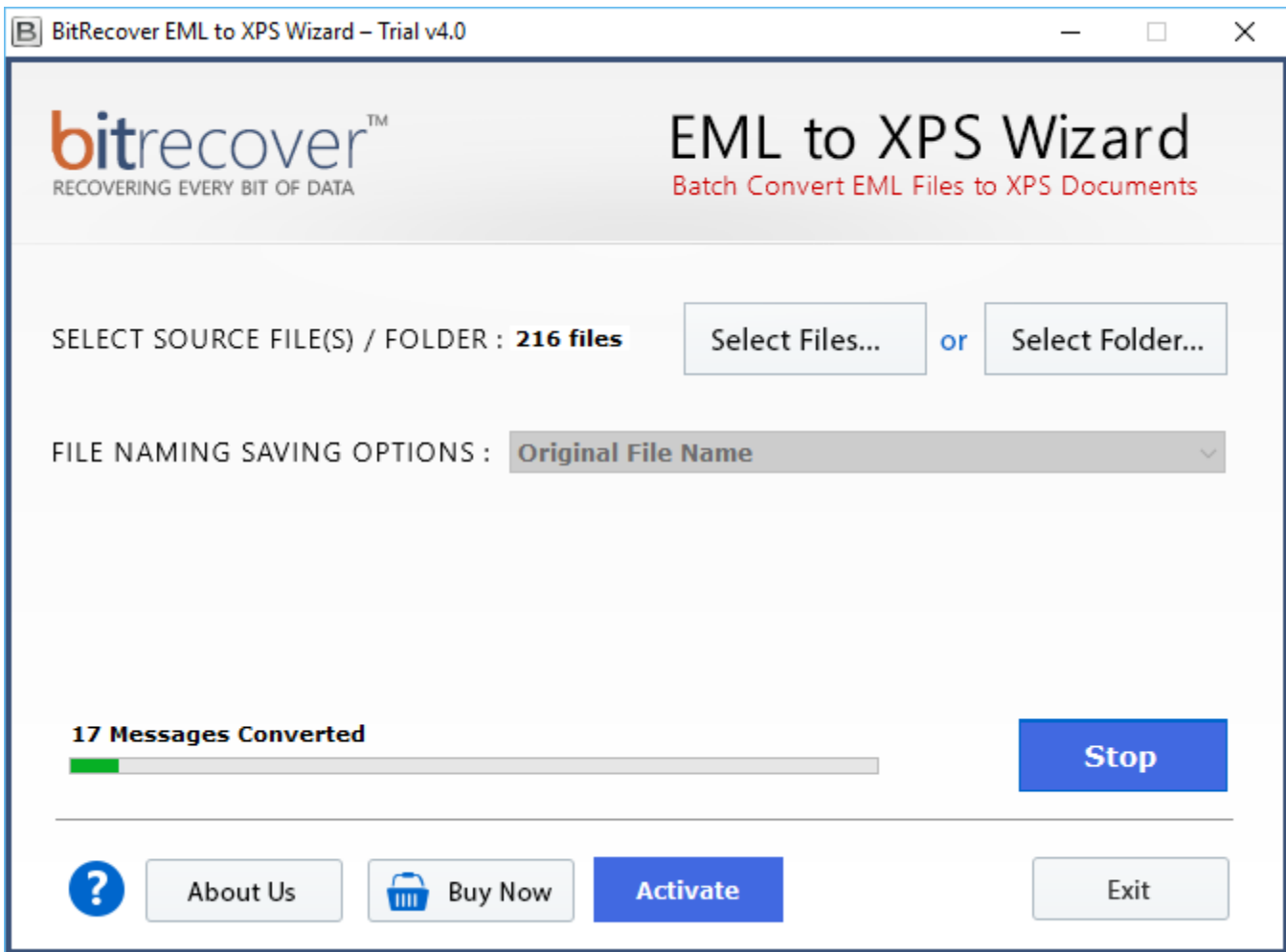
**Step 3:** Select one of the file naming saving options from the displayed list of available options.



**Step 4:** Once you are done with above 3 steps, click on **Convert** button.



**Step 5:** Wait for the software to complete the conversion process. You can also see the live conversion progress report in the software panel.



By following the above 5 steps, you can effectively convert your EML files into XPS documents using this EML to XPS Tool. The software's intuitive interface ensures that even users with limited technical expertise can navigate through the conversion process with ease. Its compatibility with EML files from various email clients, such as Thunderbird, Outlook Express, and Windows Live Mail, makes it a versatile choice for users seeking to manage their email messages across different platforms.

### Conclusion

Thus, whether you are archiving emails for record-keeping, preparing documents for printing, or sharing messages in a universally accessible format, this tool offers a reliable and user-friendly solution. A notable feature of this software is its ability to preserve the integrity of the original emails, including text formatting, images, attachments, headers and metadata, ensuring that no information is lost during the conversion process. Additionally, the tool supports batch conversion allowing you to process multiple EML files simultaneously, thereby saving time and effort.