

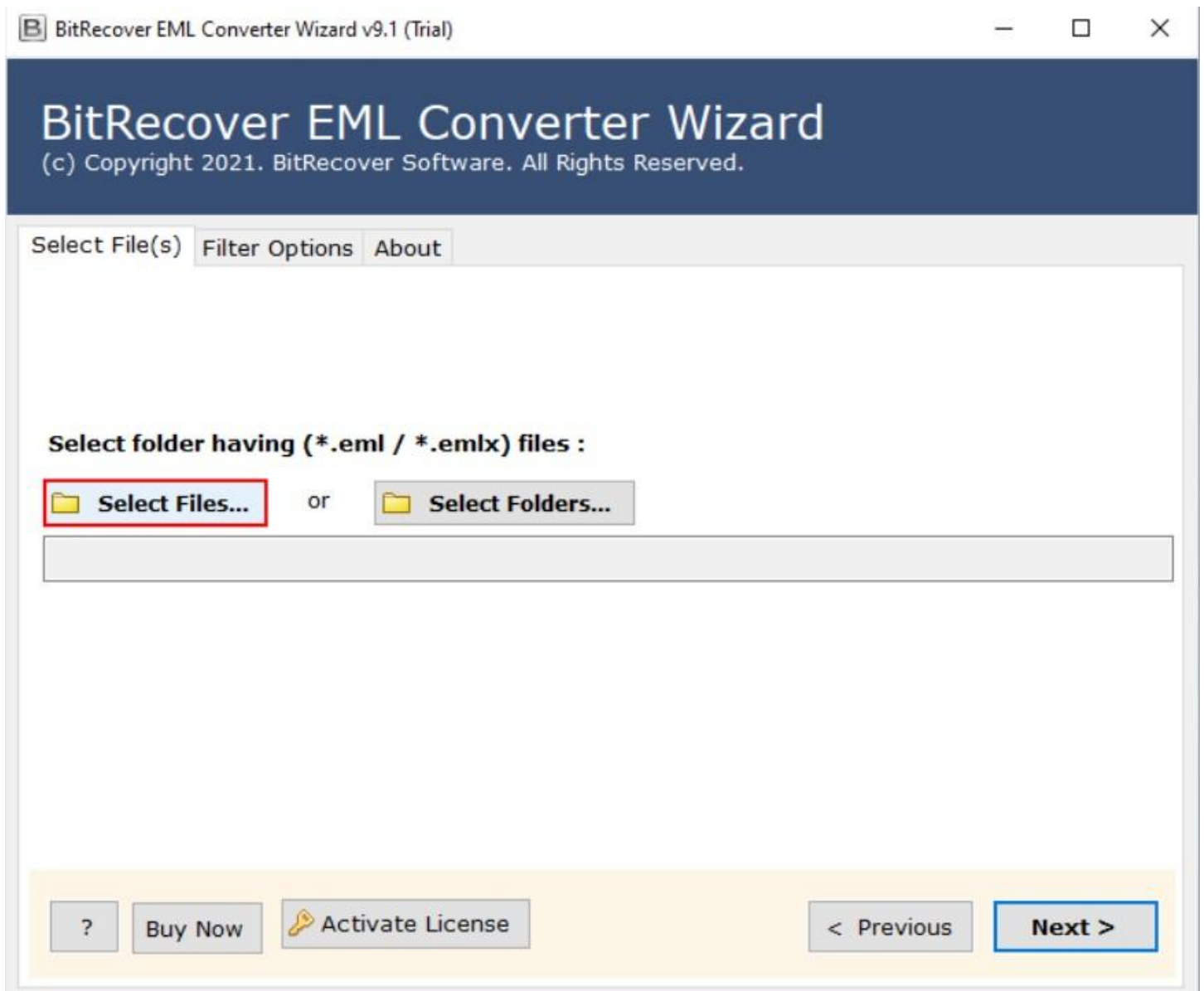
## BitRecover EMLX Converter Tool

Convert EMLX files into 38 saving options such as EMLX to PST, MSG, EML etc.

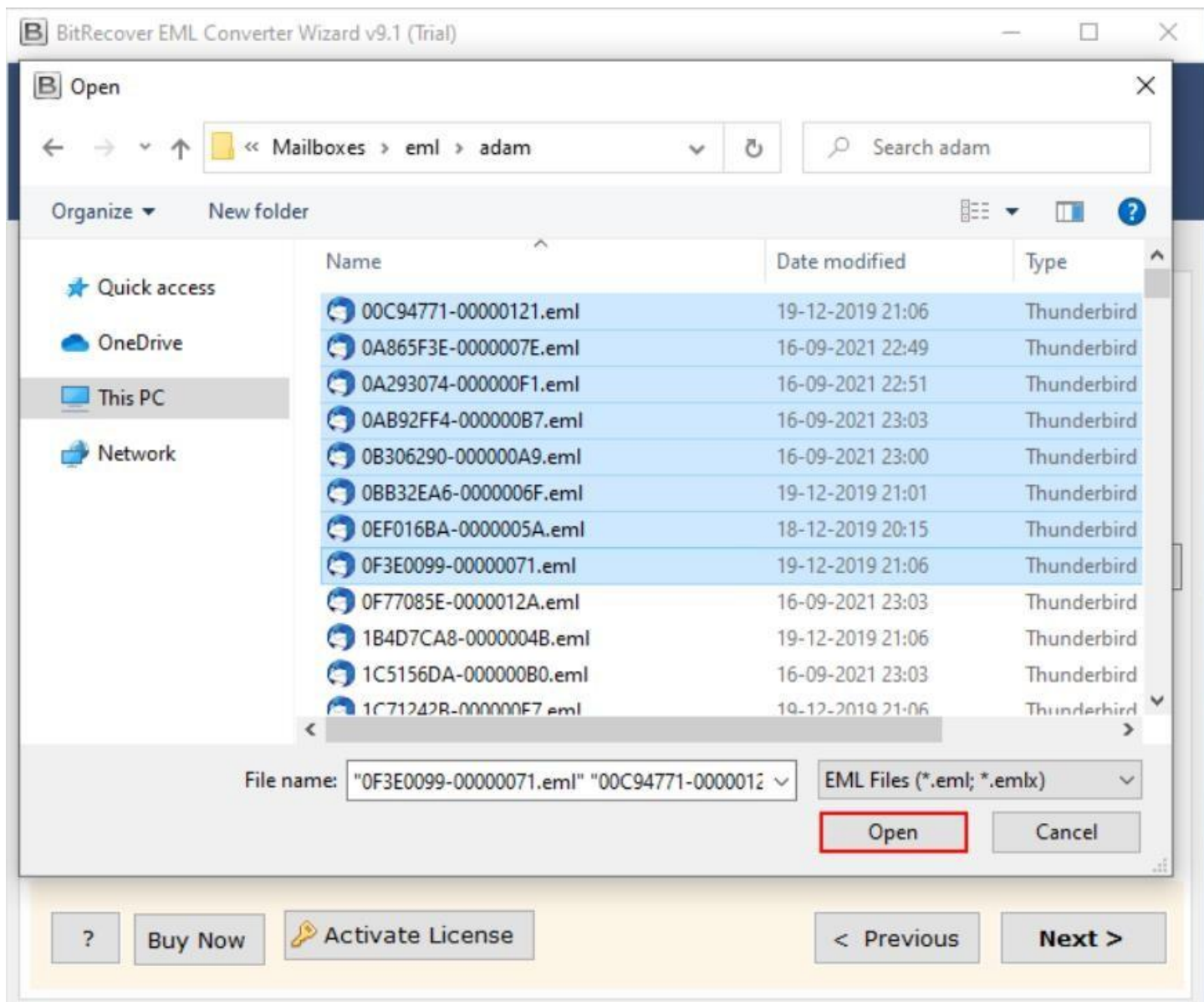
In our daily digital communications, EMLX files are commonly used to store individual email messages. However, managing and accessing these files can become challenging, especially when migrating to different platforms or requiring specific formats for archiving or analysis. This is where the EMLX Converter Tool comes into play which is basically a versatile tool that allows users to convert EMLX files into 35 different formats ensuring seamless accessibility and management of email data across diverse platforms.

Visit the official page: [EMLX Converter](#)

**Step 1: Download** the EMLX Converter Tool and open it. If you wish to select individual files, click on the **Select Files** option or if you wish to select folder, click on the **Select Folders** option.



**Step 2:** Select the files which you wish to convert and click on the **Open** button.























**Step 3:** The software panel will display the list of all the folders, tick the required ones and click on the **Next** button.

# BitRecover EML Converter Wizard


(c) Copyright 2021. BitRecover Software. All Rights Reserved.

Select Folders Filter Options About

-   [Redacted]
-   F:\Mailboxes\Eml files (0)
  -   adam (0)
    -   Inbox (213)
  -   dove (0)
    -   Inbox (213)
  -   esther (0)
    -   Inbox (213)
  -   凱蒂 (0)
    -   Inbox (213)

?

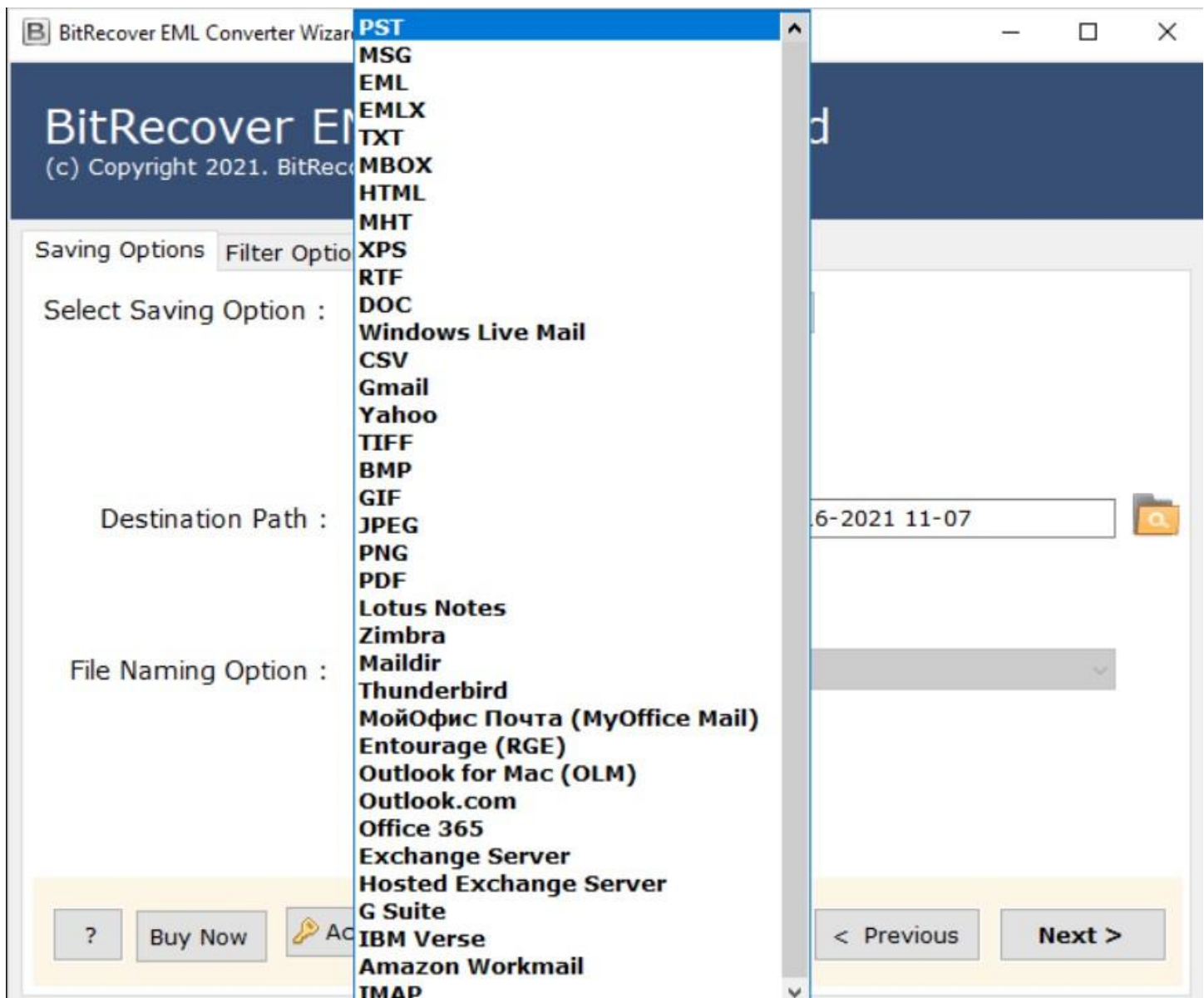
Buy Now

 Activate License

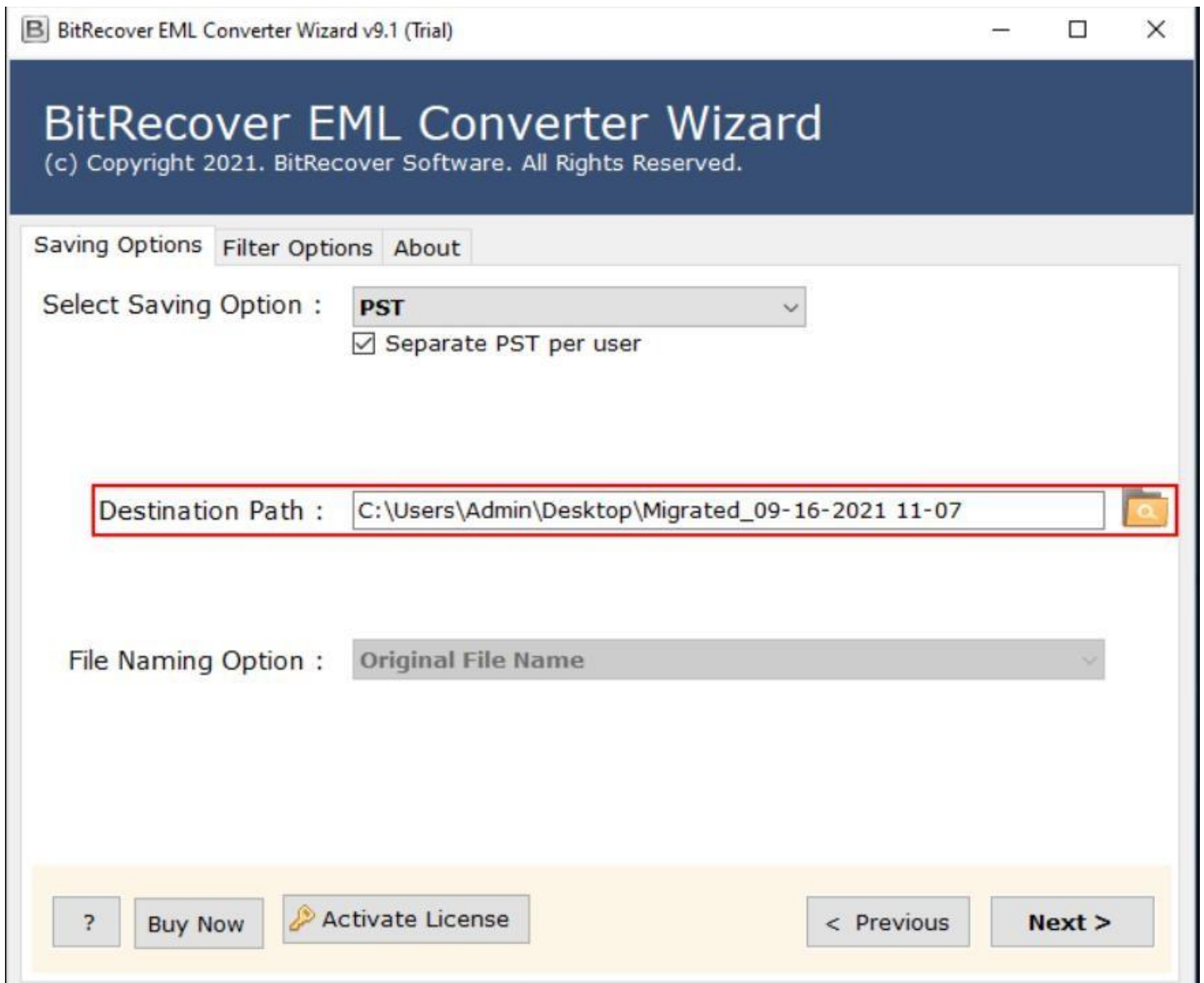
< Previous

Next >

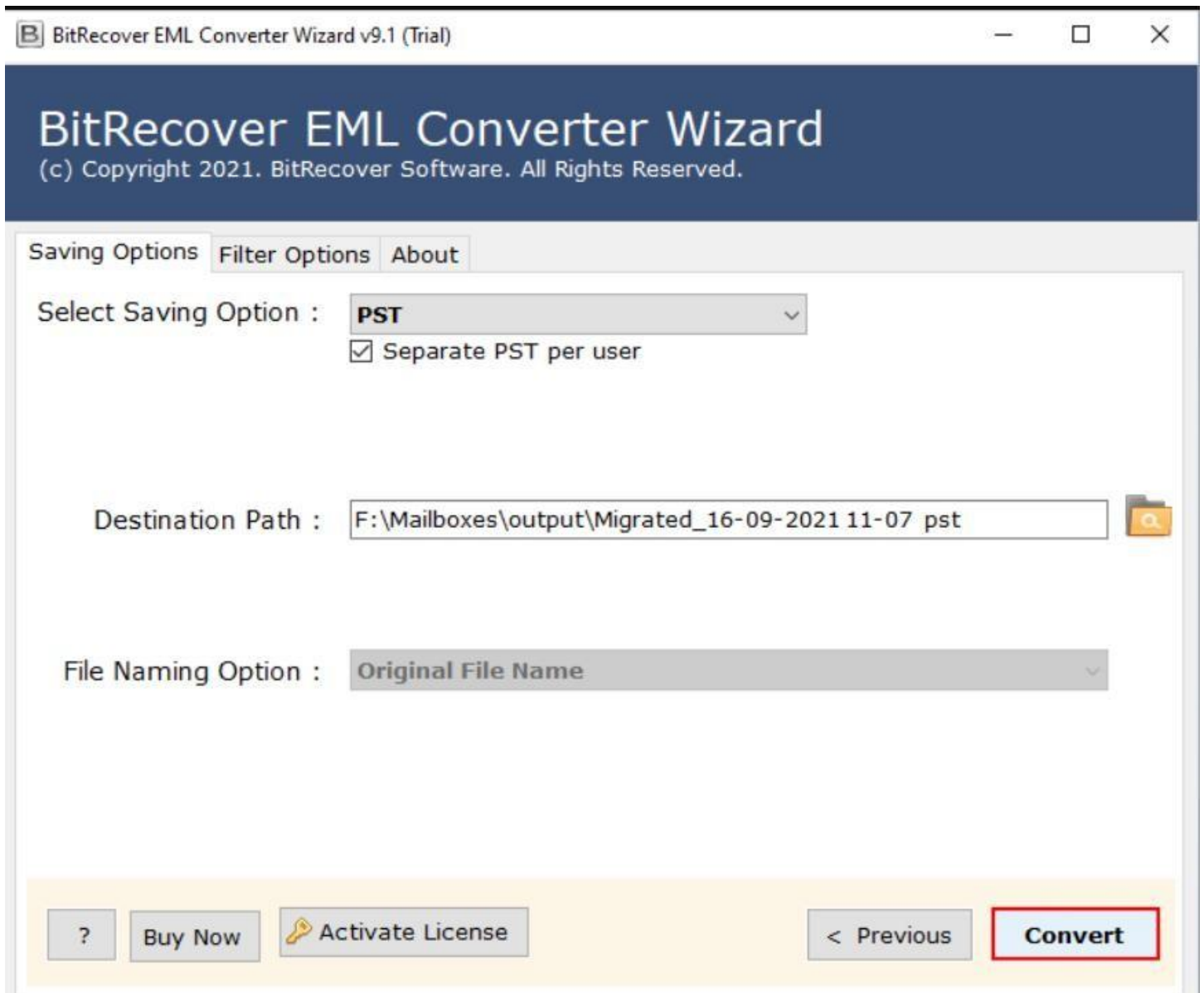
**Step 4:** Choose a format as the saving option for the converted files from the displayed list of 38+ available options.



**Step 5:** Choose a destination path for saving the converted files by clicking on the **Folder** icon displayed in the software panel.

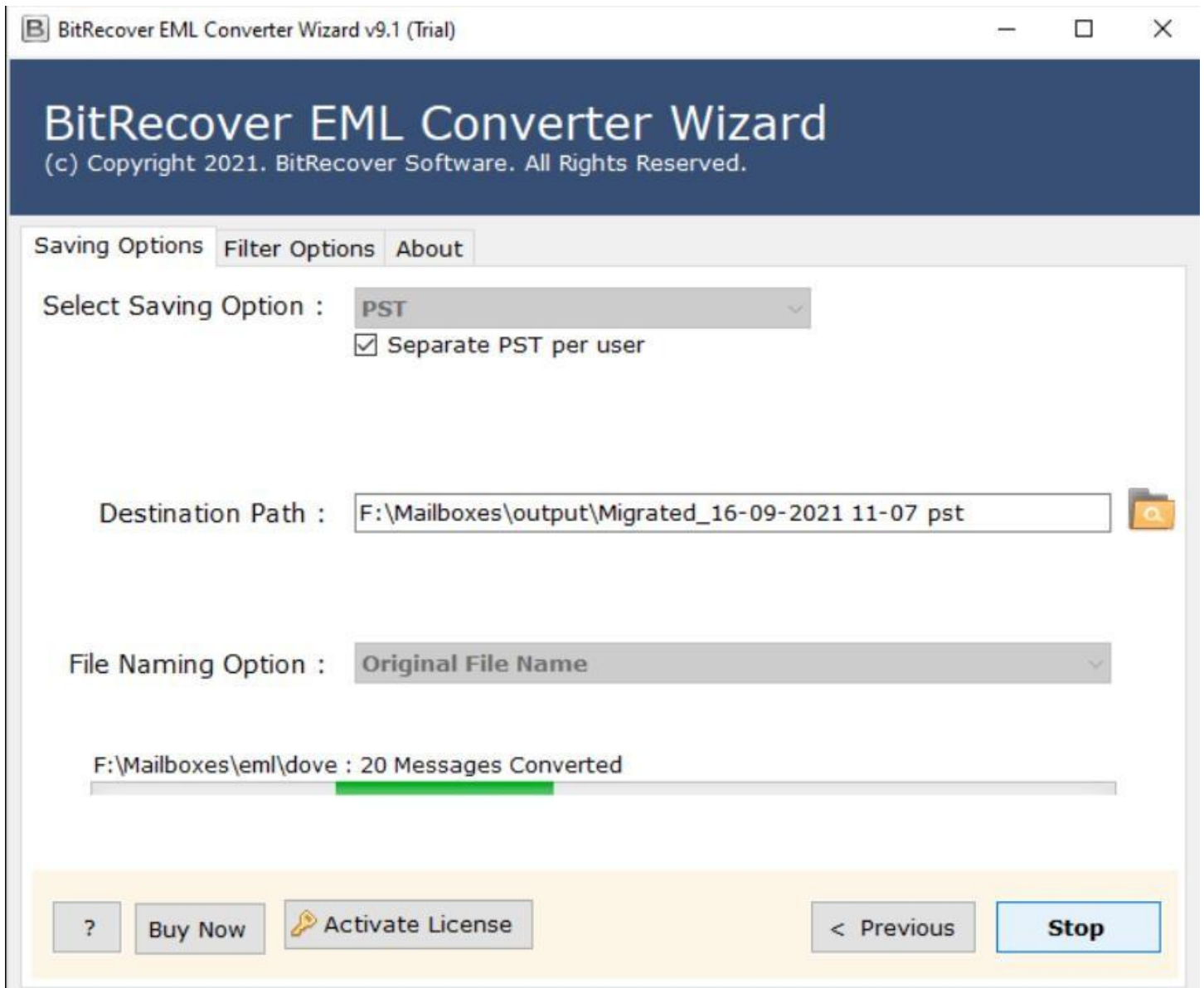


**Step 6:** Once you are done selecting the saving option and the destination path, click on the **Convert** button to start the conversion process.

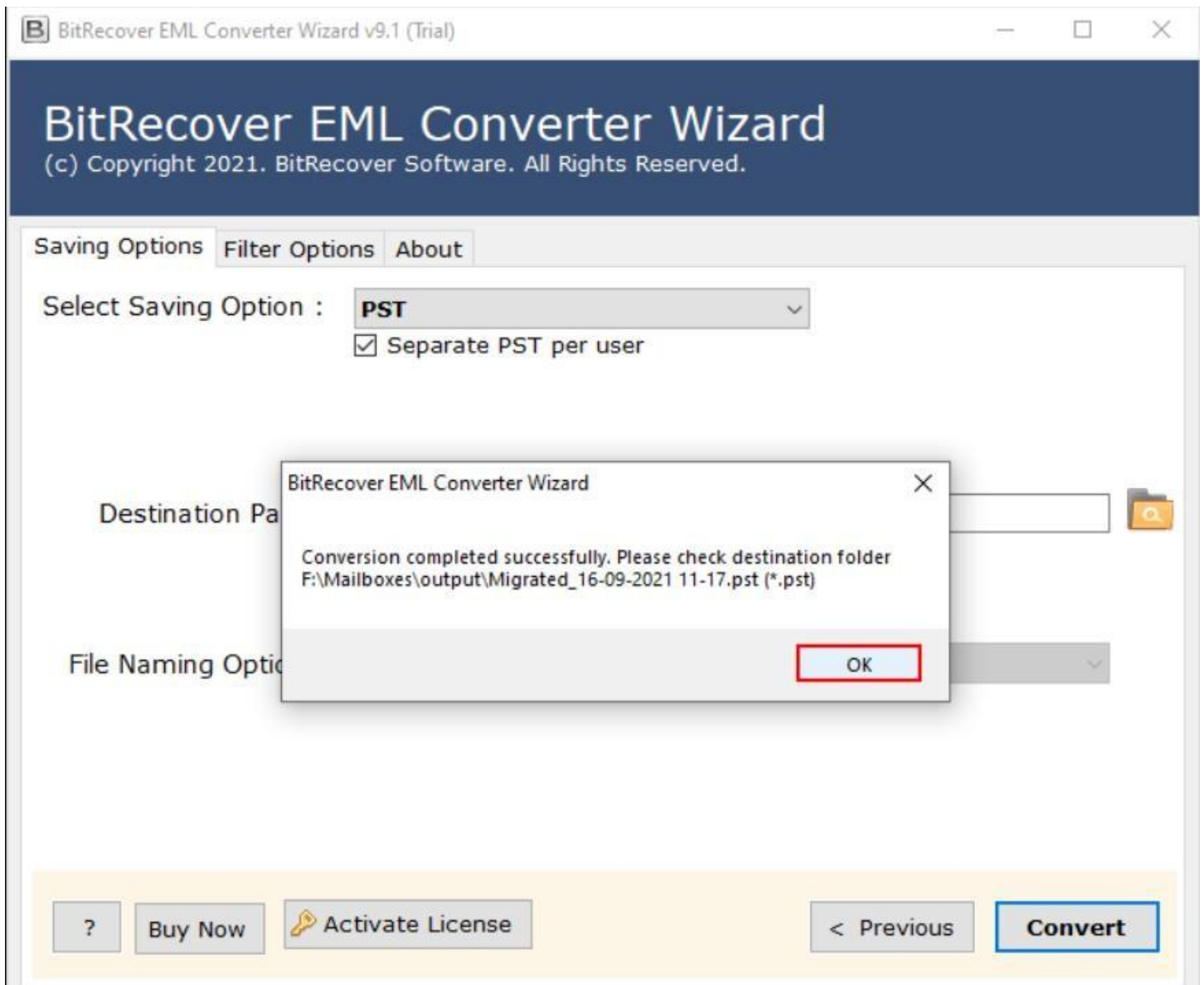


**Step 7:** Let the software complete the conversion process. You can also see the live conversion progress report in the software panel.





**Step 8:** After the conversion has been completed, you will get a prompt message informing you that the conversion has been completed along with the destination path where the converted files have been stored.



By following the above 8 steps, you can effectively convert your EMLX files into various formats using this EMLX Converter Tool. A notable feature of this software is its advanced filter options, which allow you to selectively convert emails based on criteria such as date range, subject or sender providing a tailored conversion experience. Its intuitive interface ensures that even users with limited technical expertise can navigate the conversion process with ease.

## Conclusion

Thus, whether you are transitioning to a new Email client, archiving your emails, or performing data analysis, this tool offers a reliable and user-friendly solution. Additionally, the tool supports batch conversion, allowing you to process multiple EMLX files simultaneously thereby saving time and effort. A standout feature of this software is its ability to retain the original folder hierarchy and email properties during the conversion process, ensuring that your data remains original and intact.