

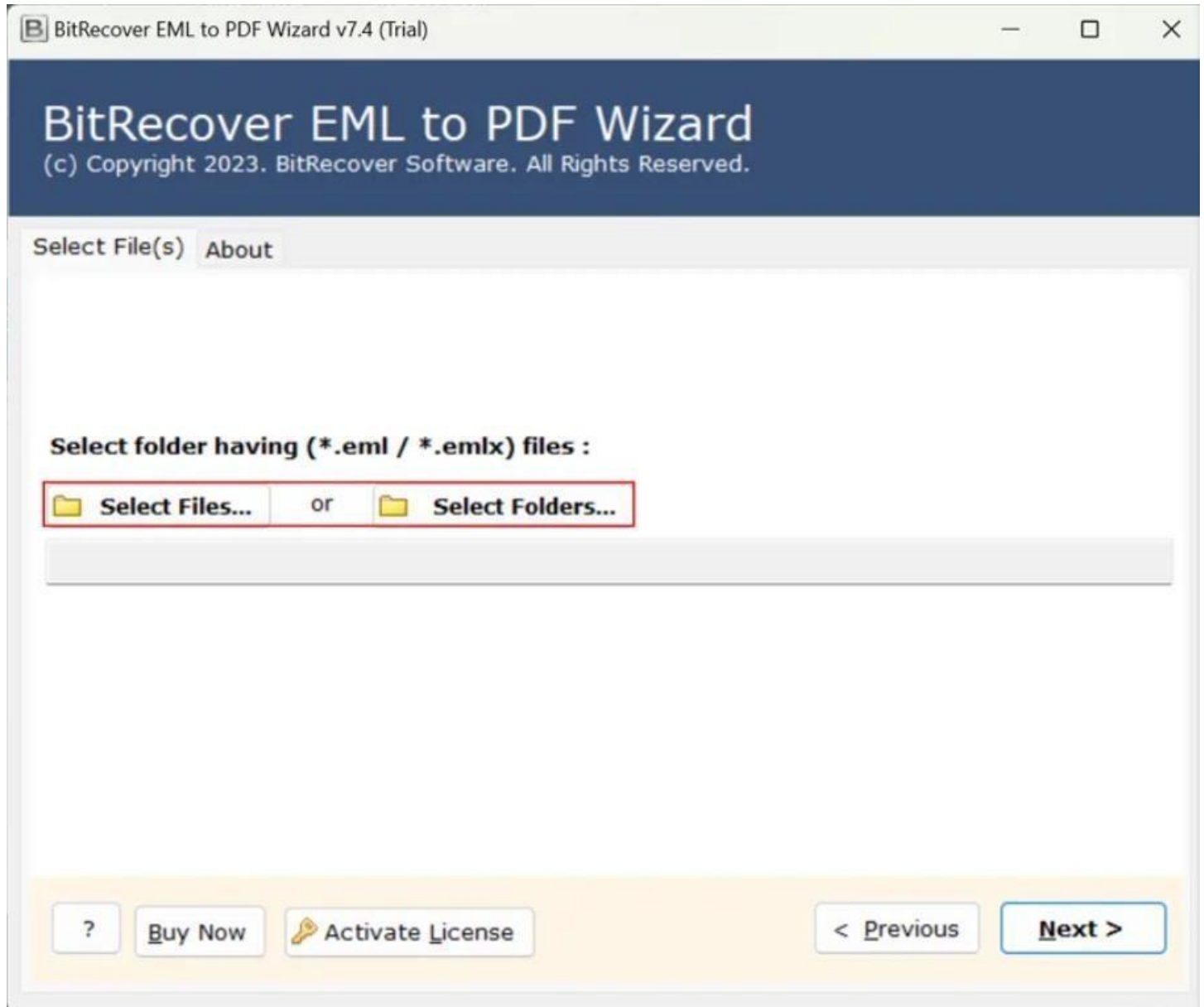
BitRecover EMLX to Gmail Converter

Best software to convert EMLX to Gmail with attachments

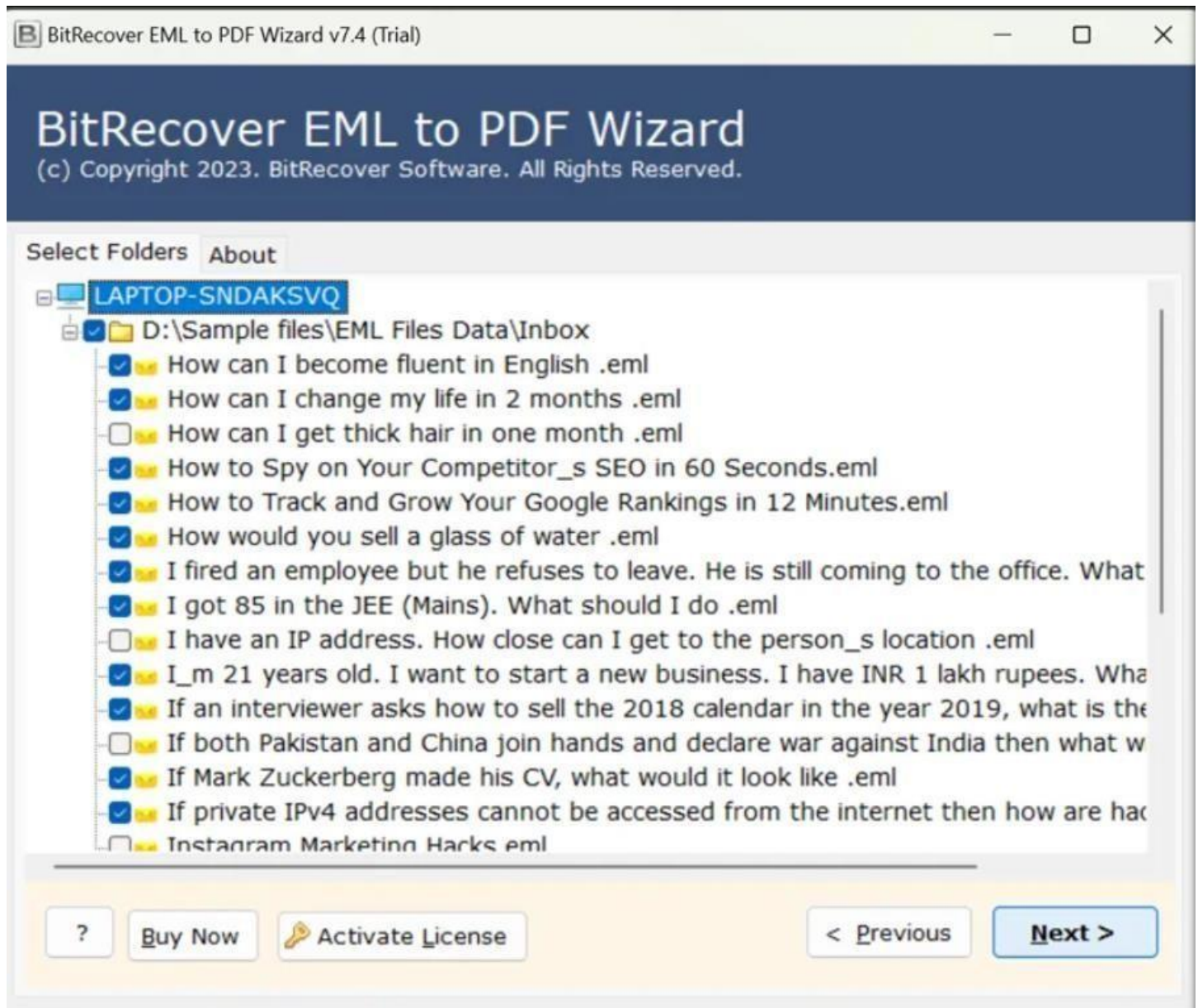
Converting EMLX files to Gmail can be essential for archiving, sharing or printing email messages while preserving their original formatting. This is where the EMLX to Gmail tool comes into play which simplifies this process by enabling users to convert EMLX files into Gmail documents efficiently. This ensures that your emails are accessible and presentable across various platforms and devices.

Visit the official page: [EMLX to Gmail Converter](#)

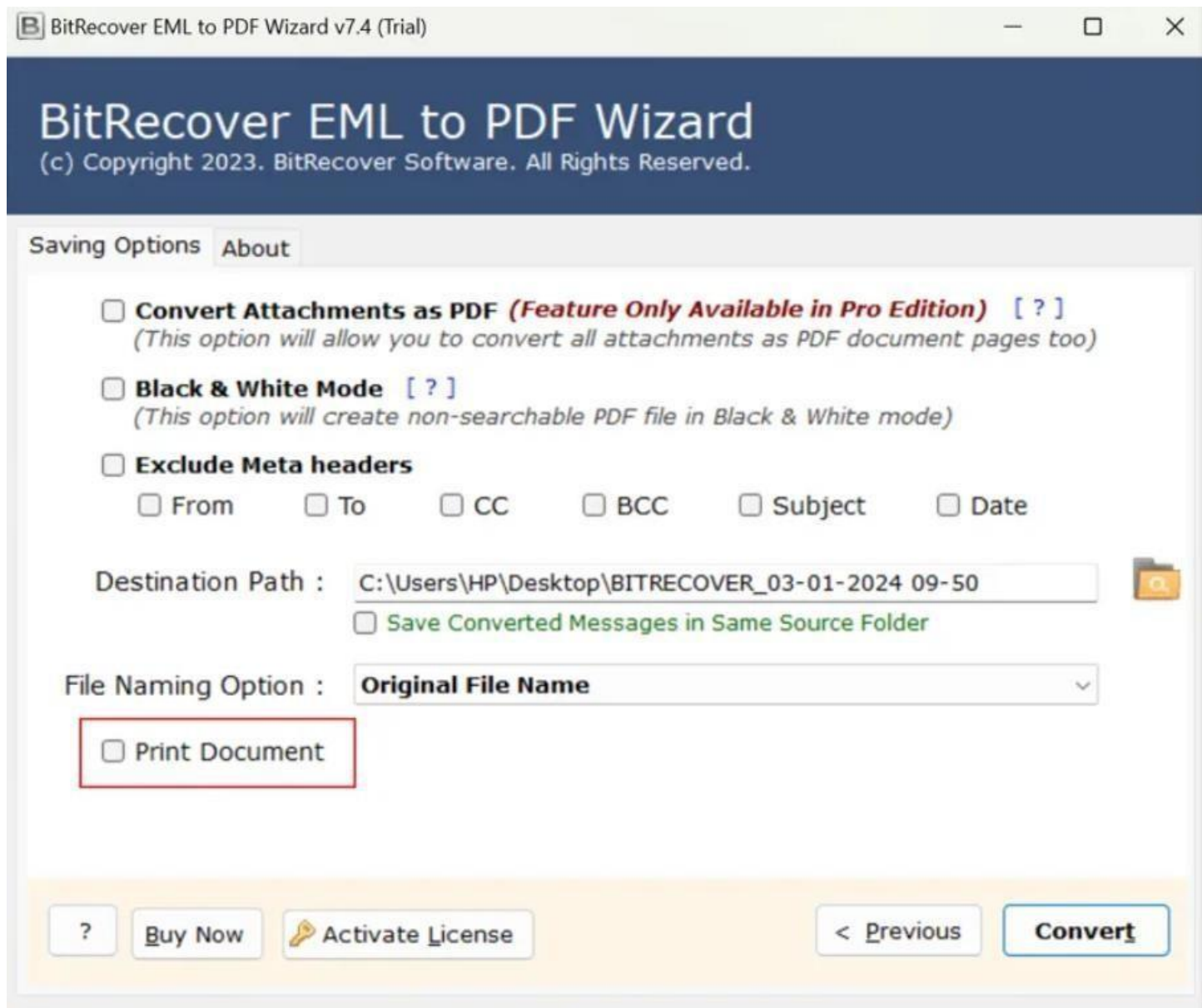
Step 1: Download the EMLX to Gmail Tool and open it. If you wish upload individual files, click on the **Select Files** option or if you wish to upload folders, click on the **Select Folders** option.



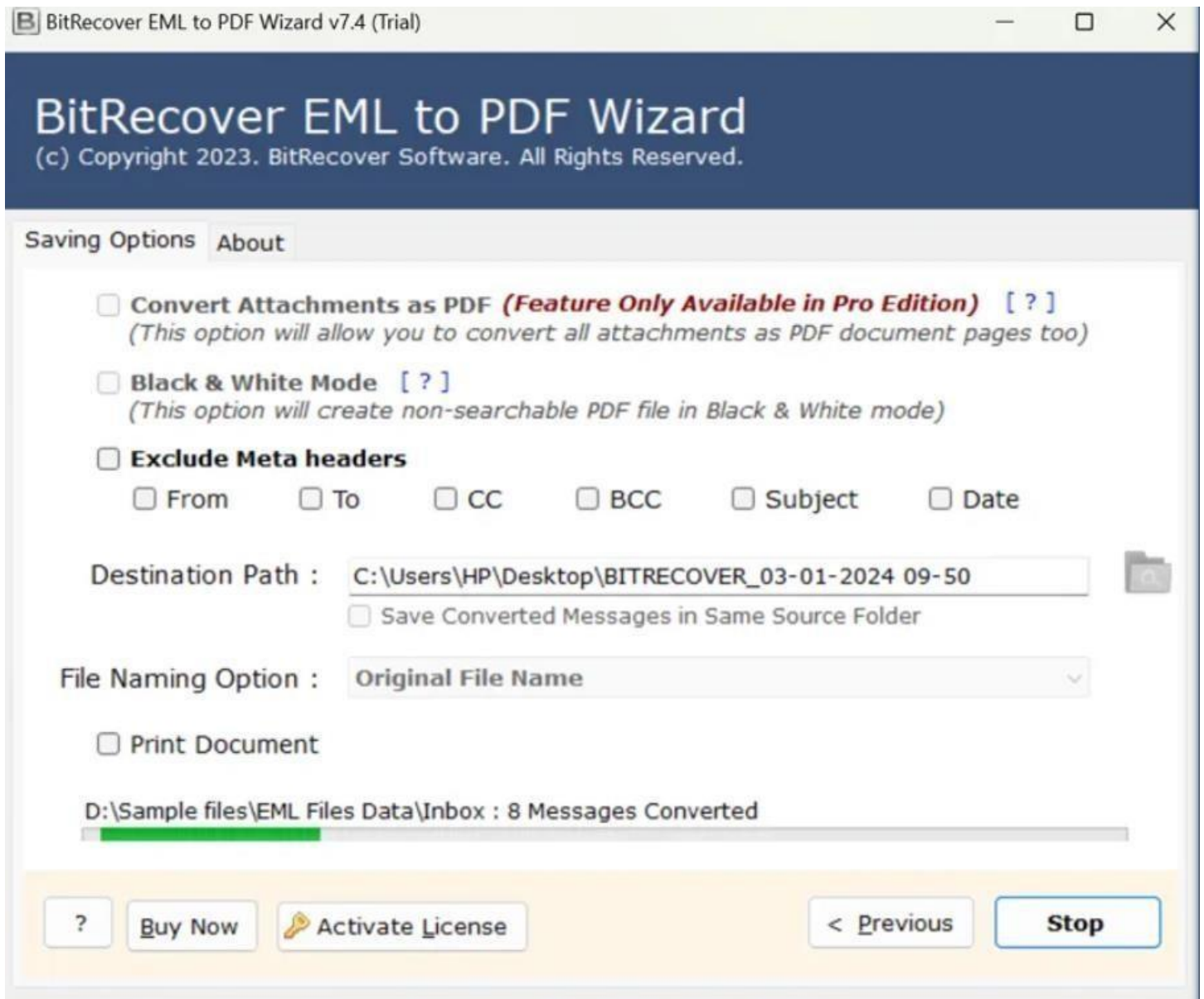
Step 2: Tick the required files/folders and then click on **Next** button.



Step 3: Select the File naming option as per your requirement from the displayed list of options. Choose a destination path where you wish to save the converted files and if you wish to print the document as well, you can tick the **Print Document** option.



Step 4: Let the software complete the conversion process. You can also see the live conversion progress report in the software panel itself.



By following the above 4 steps, you can efficiently convert your EMLX files into Gmail format using this EMLX to Gmail wizard. The software's intuitive interface ensures that even users with limited technical expertise can navigate the conversion process with ease. Its compatibility with various email clients makes it a versatile choice for users seeking to manage their email messages in a standardized document format.

Conclusion

Thus, whether you are archiving your emails, preparing them for legal proceedings, or simply need them in a universally accessible format, this tool offers a reliable and user-friendly solution. A notable feature of this software is its ability to maintain the original formatting and attachments during the conversion process, ensuring that your emails remain intact. Additionally, the tool supports batch conversion, allowing you to process multiple EMLX files simultaneously, thereby saving time and effort.