

BitRecover for Exchange server EmailRaser Tool

Delete All Email Messages at Once from 90+ Webmail Applications in Bulk

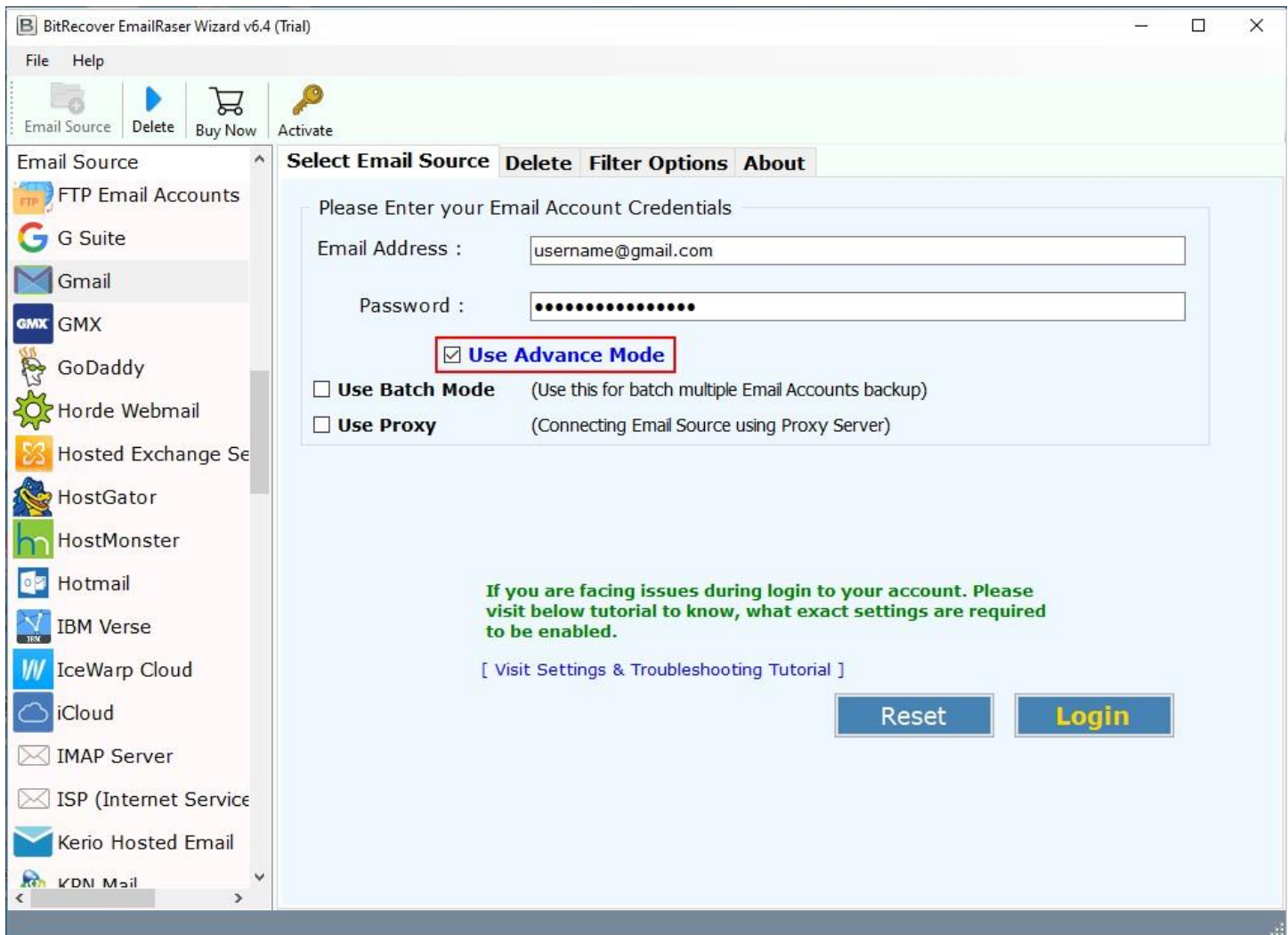
In our daily digital interactions, email accounts might often become clustered with unnecessary messages, consuming valuable storage space and making the inbox management quite challenging. This is where the Exchange server EmailRaser Tool comes into play which is a specialized tool designed to help users efficiently delete unwanted emails from various email accounts, including Microsoft 365, Gmail, Exchange server Mail, AOL Mail and more, thereby streamlining inbox management and enhancing productivity.

Visit the official page: [BitRecover for Exchange server EmailRaser Tool](#)

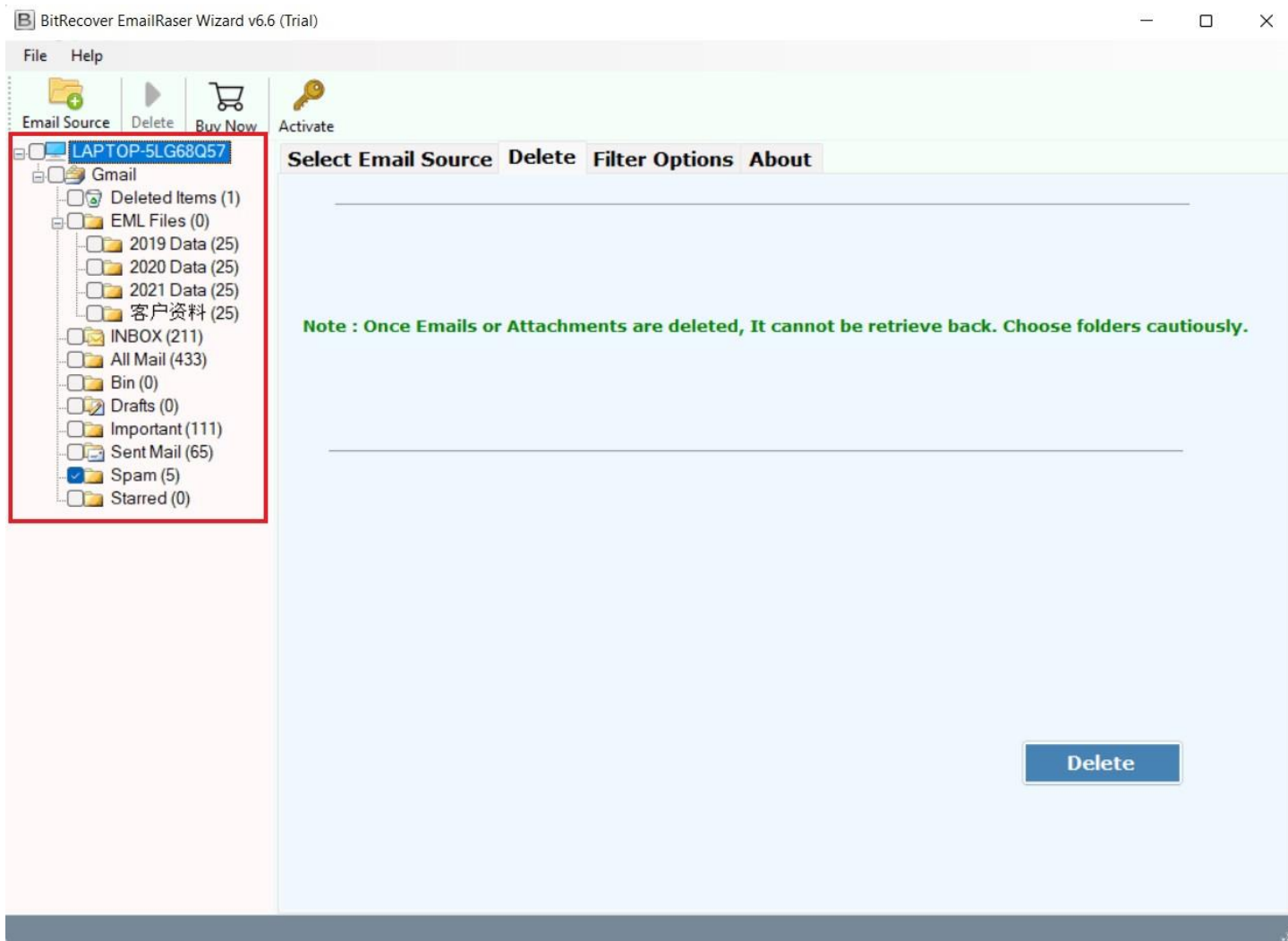
Step 1: Download the BitRecover Exchange server **EmailRaser** software and after opening the tool, you would be asked to enter your Email account credentials for which you wish to delete the mails.

The screenshot shows the BitRecover EmailRaser Wizard v6.6 (Trial) window. The interface includes a menu bar with 'File' and 'Help'. Below the menu bar is a toolbar with icons for 'Email Source', 'Delete', 'Buy Now', and 'Activate'. A sidebar on the left lists various email sources: FTP Email Accounts, G Suite, Gmail, GMX, GoDaddy, Horde Webmail, Hosted Exchange Se, HostGator, HostMonster, Hotmail, IBM Verse, IceWarp Cloud, iCloud, IMAP Server, ISP (Internet Service, and Kerio Hosted Email. The main area has tabs for 'Select Email Source', 'Delete', 'Filter Options', and 'About'. The 'Select Email Source' tab is active, displaying a form titled 'Please Enter your Email Account Credentials'. This form contains fields for 'Email Address' and 'Password'. Below these fields are three checkboxes: 'Use Advance Mode' (which is checked), 'Use Batch Mode' (with a description: '(Use this for batch multiple Email Accounts backup)'), and 'Use Proxy' (with a description: '(Connecting Email Source using Proxy Server)'). At the bottom of the form, there is a green text message: 'If you are facing issues during login to your account. Please visit below tutorial to know, what exact settings are required to be enabled.' followed by a link '[Visit Settings & Troubleshooting Tutorial]'. At the bottom right of the window are two buttons: 'Reset' and 'Login'.

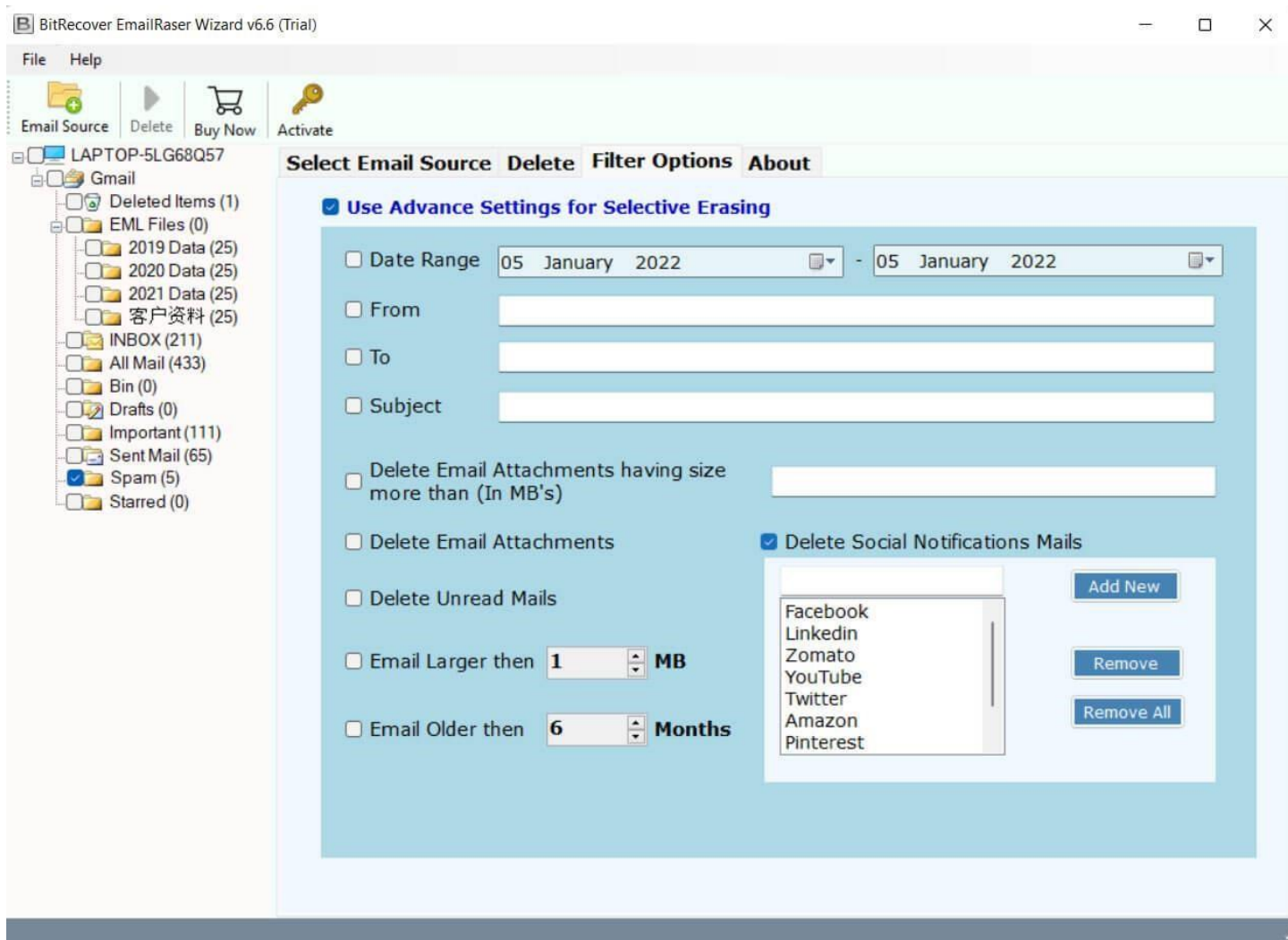
Step 2: You can also use the **Advance Mode** by ticking it which allows you to perform batch multiple accounts backup or you can connect email source using proxy server depending on your requirements.



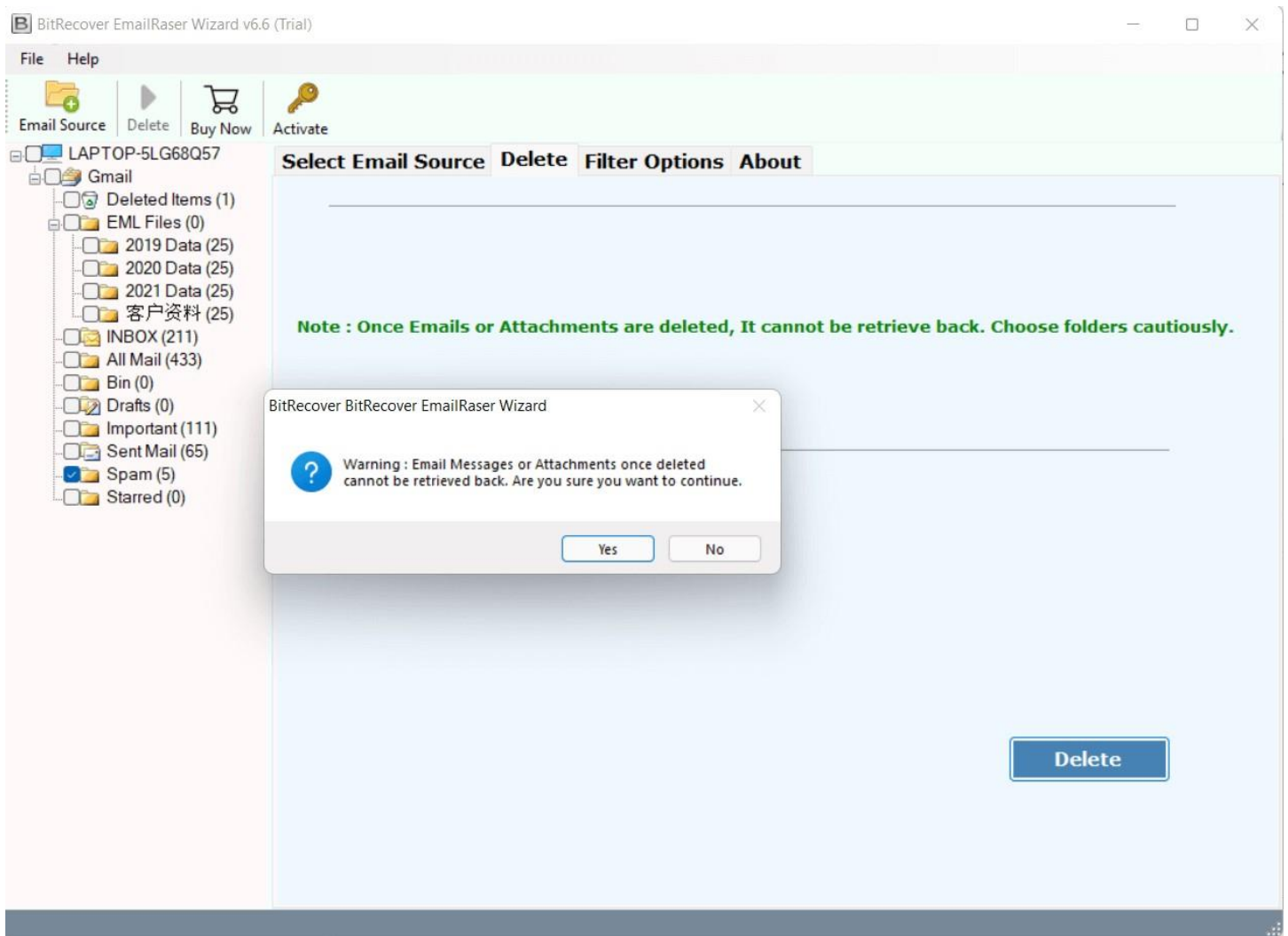
Step 3: Once you have successfully logged in, you will be displayed all the email folders on the left side of the software panel. You can tick the folders which you wish to delete and untick the rest.



Step 4: You can also apply filters as per your need by click on the **Filter Options** in the software panel.



Step 5: Once you are done with all the previous steps, click on the **Delete** button and a prompt will be displayed on your screen asking you for confirmation. Click on the **Yes** button and let the software complete the removal process.



By following the above 5 steps, you can efficiently delete unwanted emails from your inbox using the BitRecover for Exchange server EmailRaser Tool. A notable feature of this software is its batch email deletion capability allowing you to remove multiple emails simultaneously, saving time and effort. Its advanced filter options enable selective deletion based on the user's requirements, ensuring that only the unnecessary emails are deleted.

Conclusion

Thus, whether you are dealing with an overloaded inbox or aiming to enhance email management, this tool offers a reliable and user-friendly solution making the email deletion process straightforward and accessible to all users. Additionally, the tool provides you a preview of email folders before permanent deletion, allows users to make informed decisions. A standout feature of this software is its ability to permanently remove emails and attachments from multiple email providers ensuring that deleted emails cannot be recovered from IMAP accounts.