

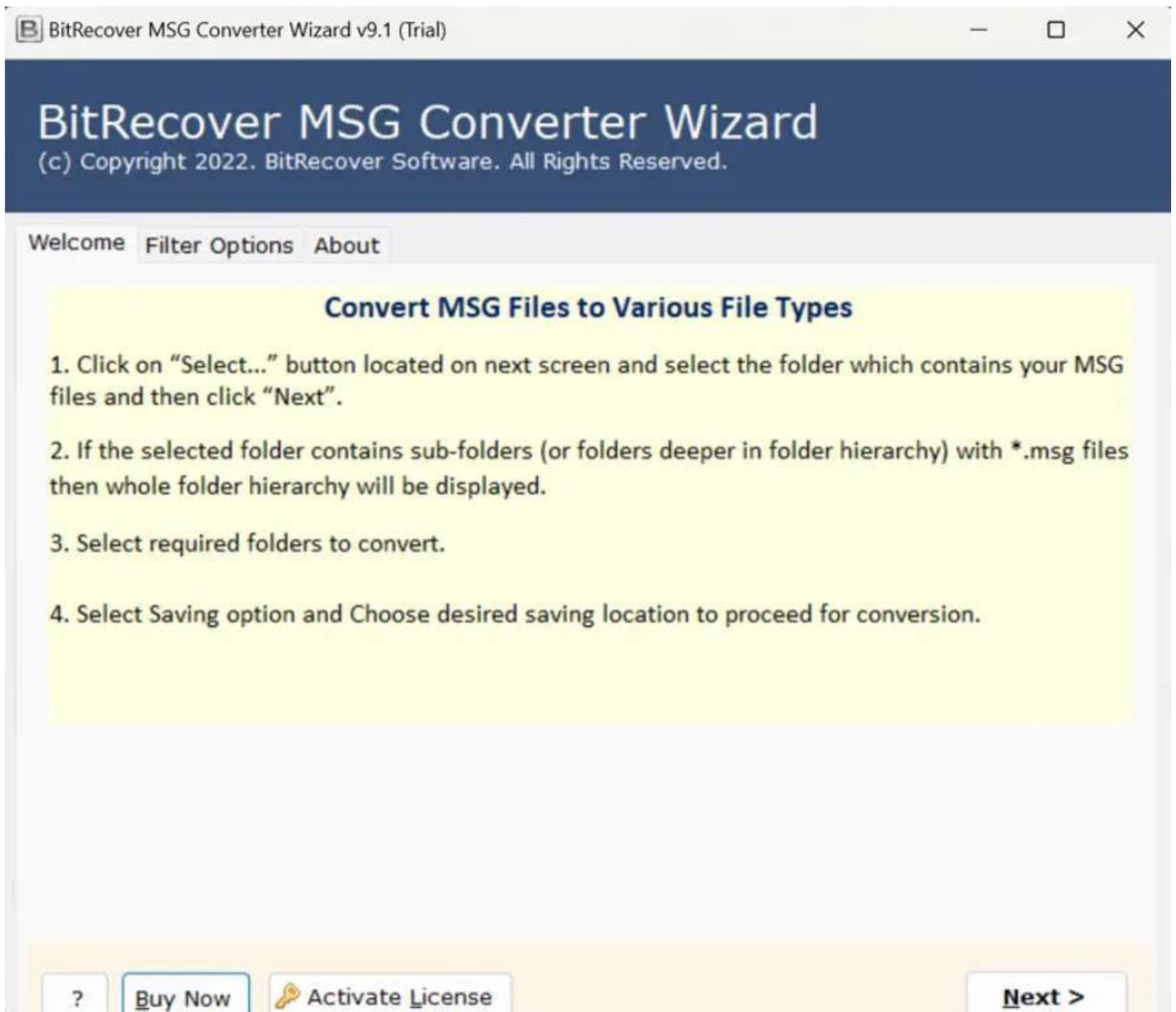
BitRecover for MSG to PST Converter Tool

Reliable and proficient software to convert MSG files to PST format in Bulk

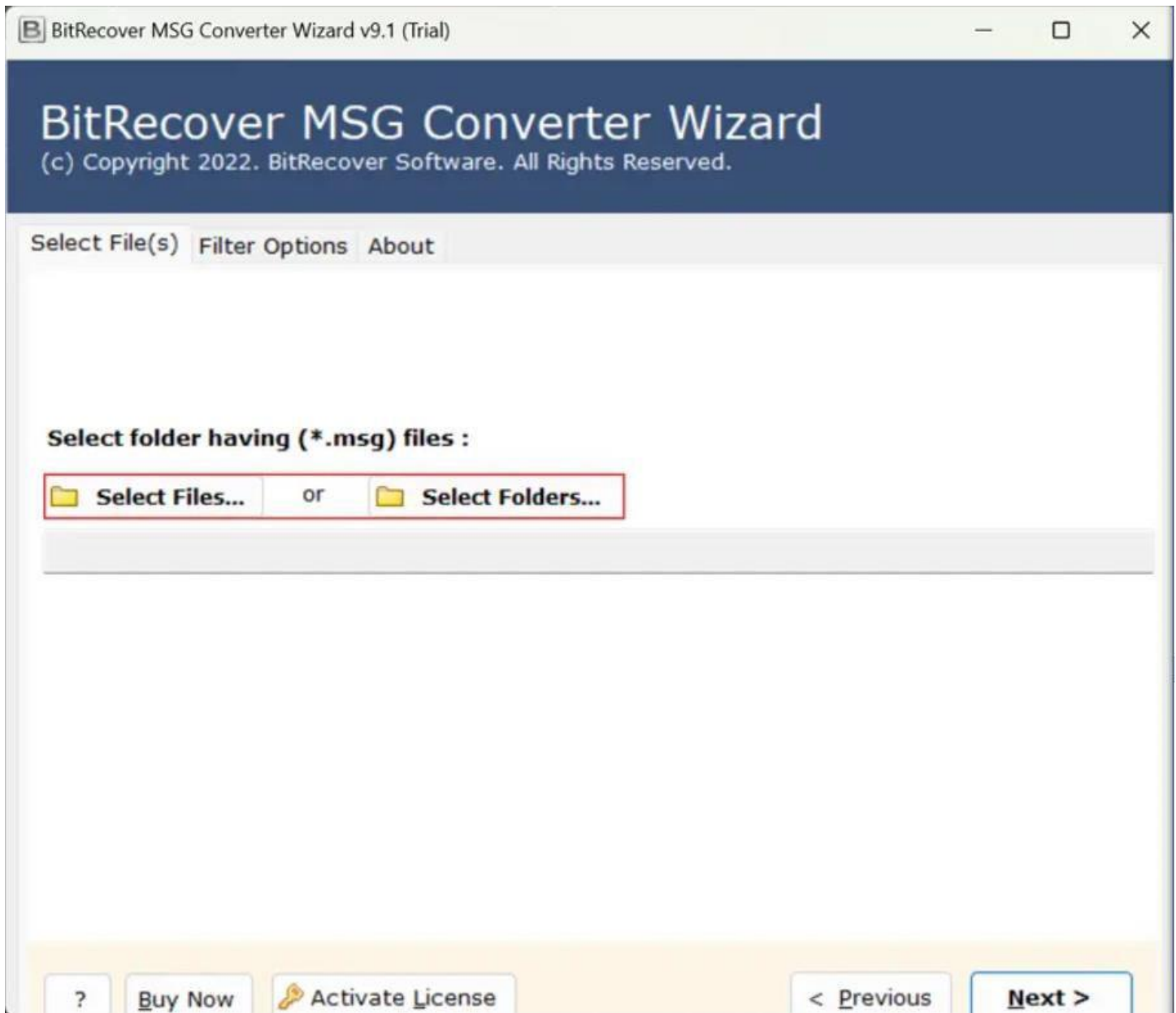
Managing and converting MSG files is essential for users who need to access their email data across various platforms and applications. This is where the MSG TO PST Converter Tool comes into play which basically simplifies this process by enabling users to convert MSG files to PST wide range of formats, including PST, EML, MBOX, PDF, DOC and more. This ensures that your email data is accessible and manageable across different environments.

Visit the official page: [BitRecover for MSG to PST Converter Tool](#)

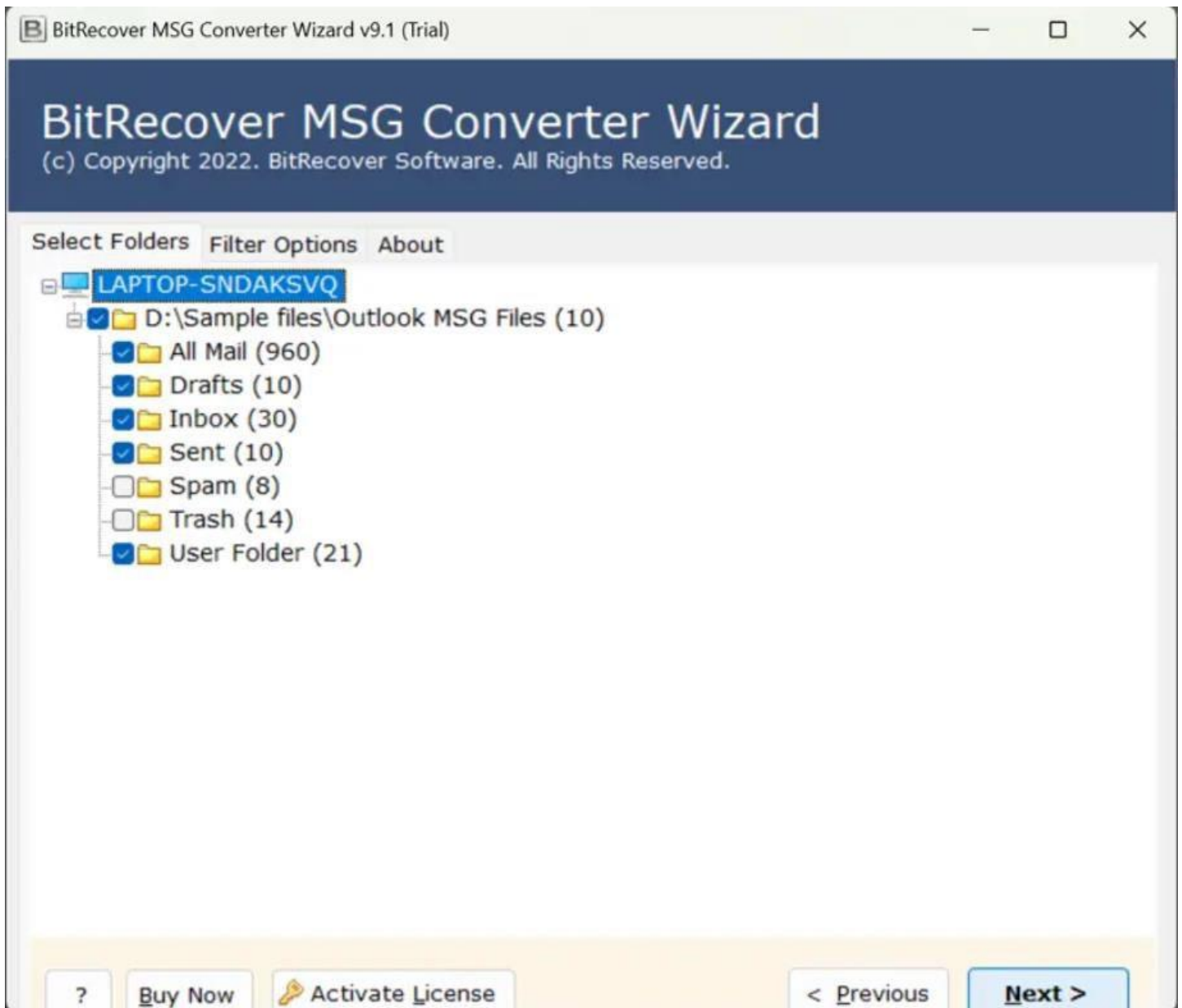
Step 1: Download the MSG to PST Tool and after opening it, go through the instructions displayed in the software panel. Once you are done with the instructions, click on the **Next** button.



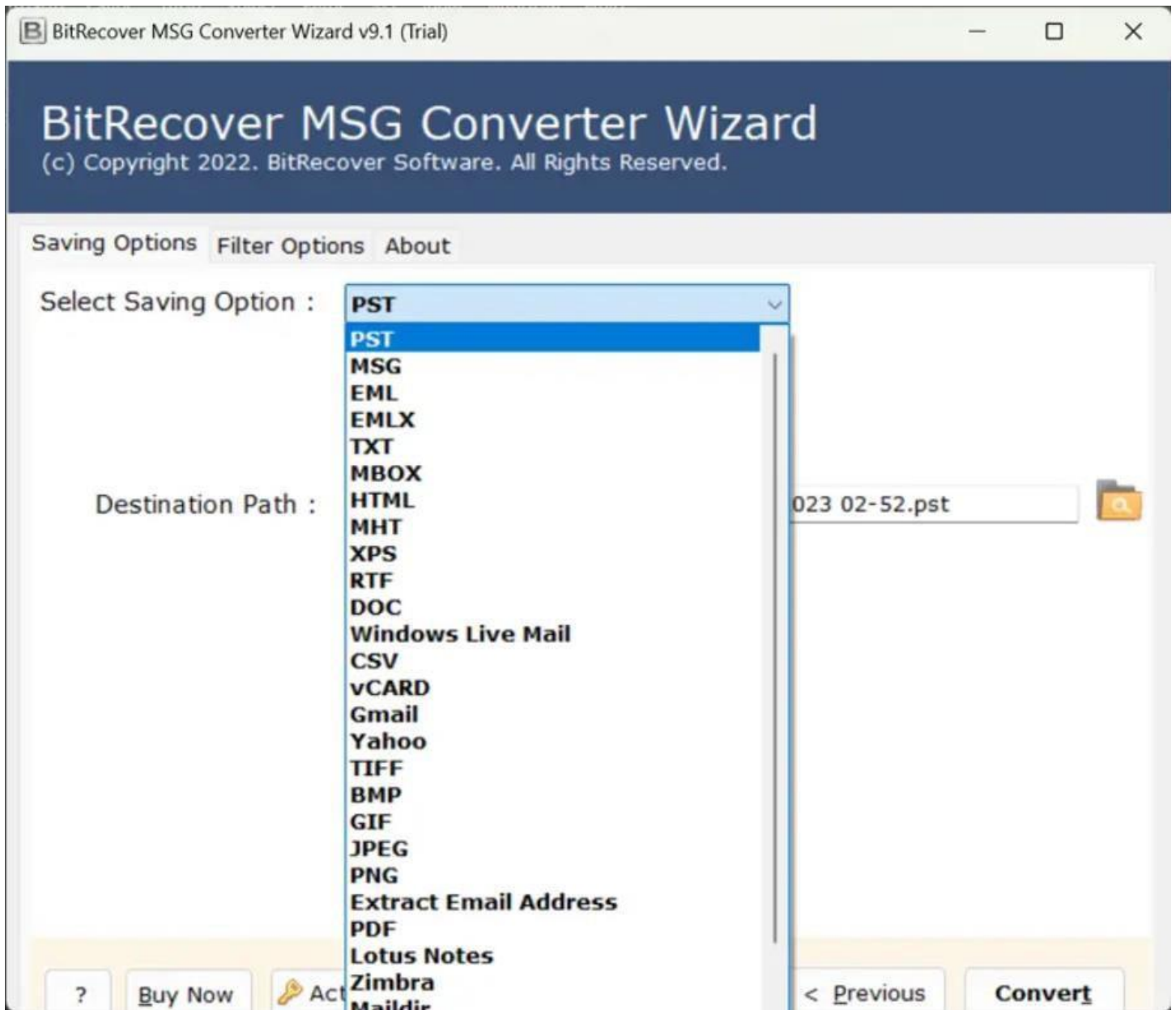
Step 2: If you wish to upload individual files, click on the **Select Files** option or if you wish to upload folders, click on the **Select Folders** option.



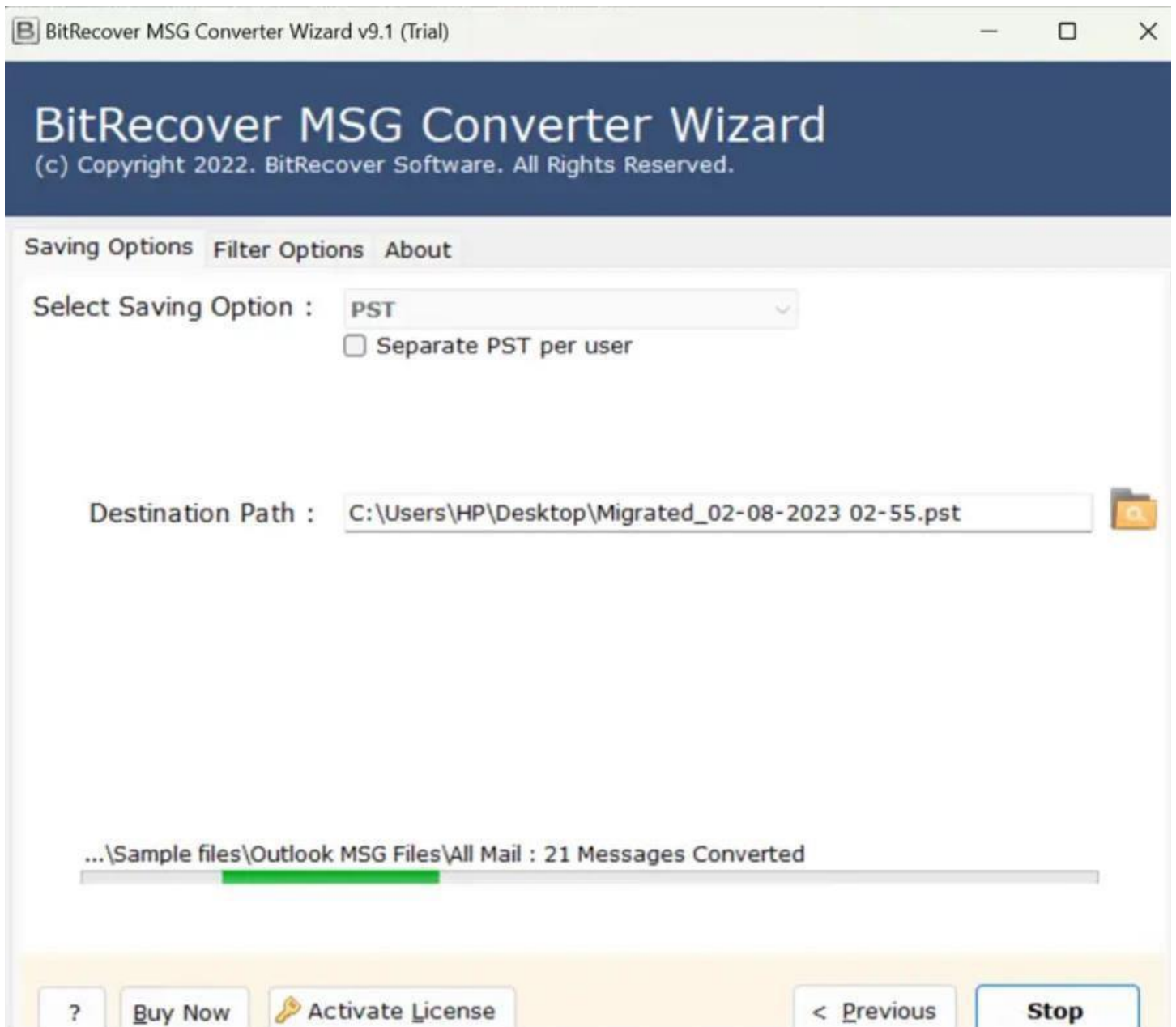
Step 3: Tick the required files and click on the **Next** button.



Step 4: Select **PST file as saving option** from the list of all the displayed options.



Step 5: Let the software complete the conversion process, you can also see the live MSG to PST file conversion progress report in the software panel itself.



By following the above simple 5 steps, you can efficiently convert your MSG files to PST format using this MSG to PST Converter Tool. The software's intuitive interface ensures that even users with limited technical expertise can navigate the conversion process with ease. Its compatibility with various formats make it a versatile choice for users seeking to manage their email messages across different platforms.

Conclusion

Thus, whether you are migrating to a new email client, consolidating your email data, or archiving information, this MSG to PST converter tool offers a reliable and user-friendly solution. A notable feature of this software is its ability to maintain the original folder structure and email components during the conversion process, ensuring that your data remains organized and intact. Additionally, the tool offers advanced filtering options, such as date range, sender, recipient and subject filters, allowing you to perform targeted conversions based on specific criteria.

