

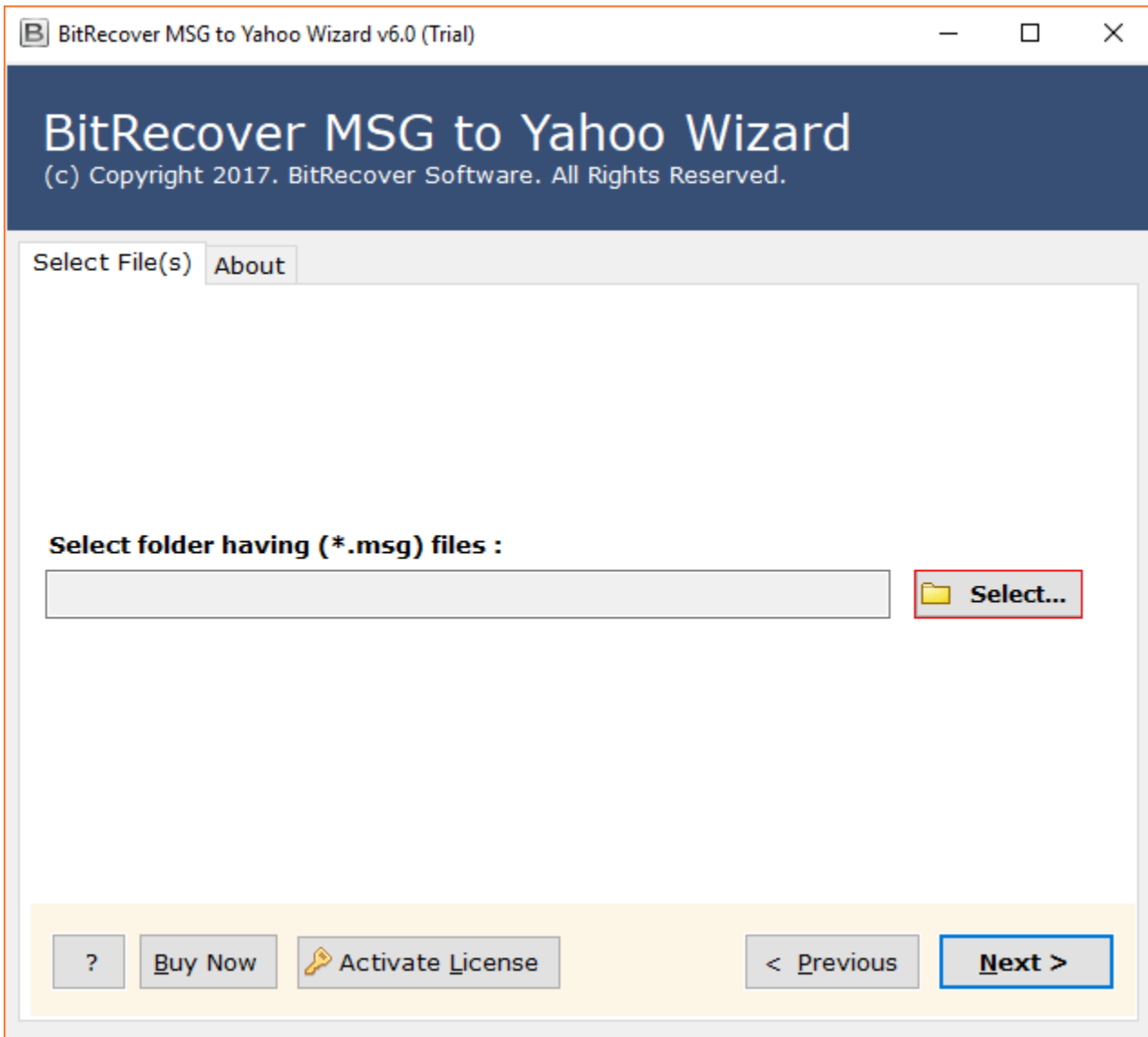
BitRecover for MSG to Yahoo Mail Tool

Perfect Software to import MSG files to Yahoo Mail including attachments and email attributes

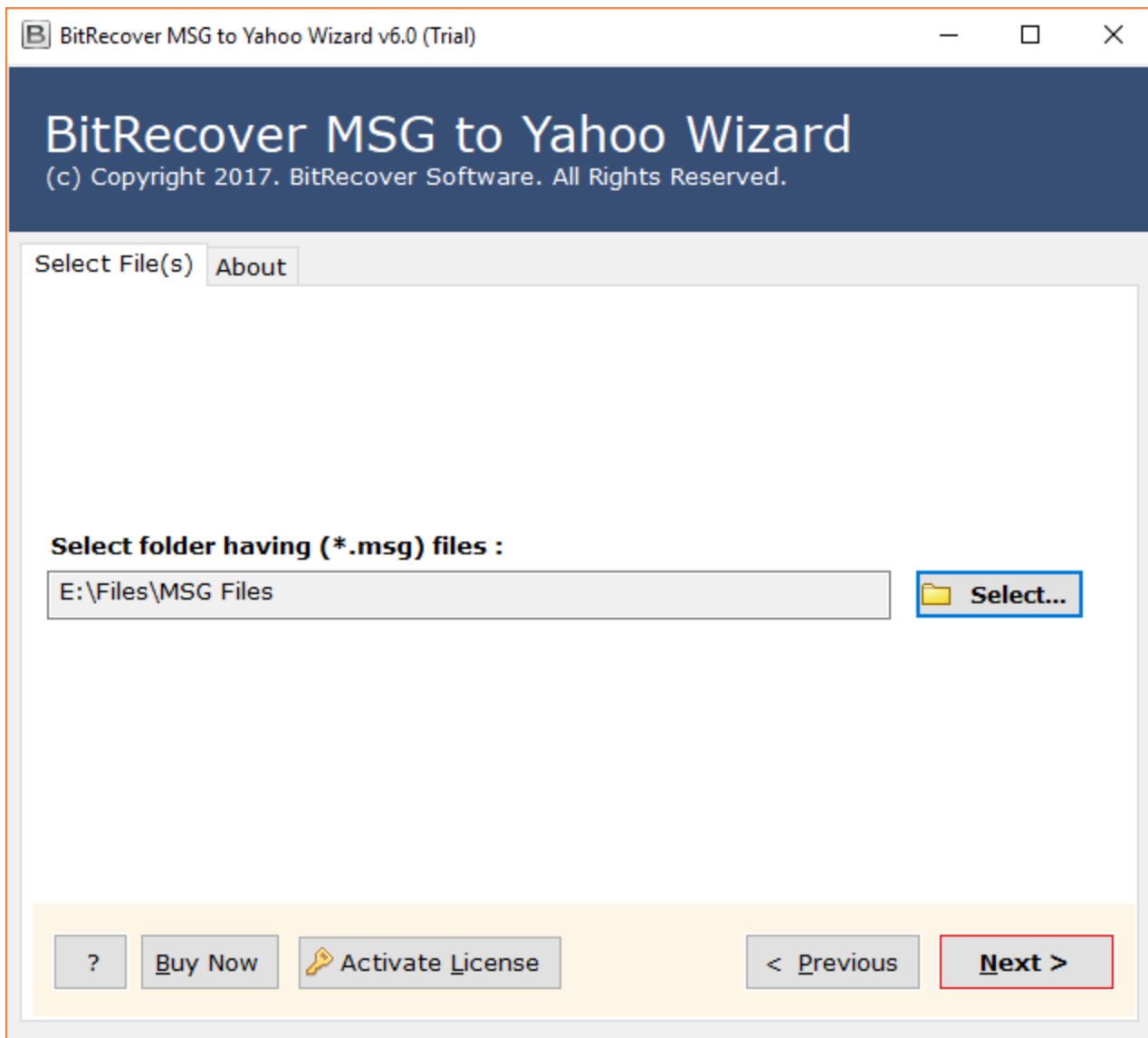
Managing MSG files to Yahoo Mail can be a complex task, especially when dealing with numerous messages. This is where the MSG to Yahoo Mail tool comes into play which basically simplifies this process by enabling users to import MSG files directly into their Yahoo mail accounts, including attachments and email attributes. This ensures seamless access and management of your emails within Yahoo Mail.

Visit the official page: [BitRecover for MSG to Yahoo Mail Wizard](#)

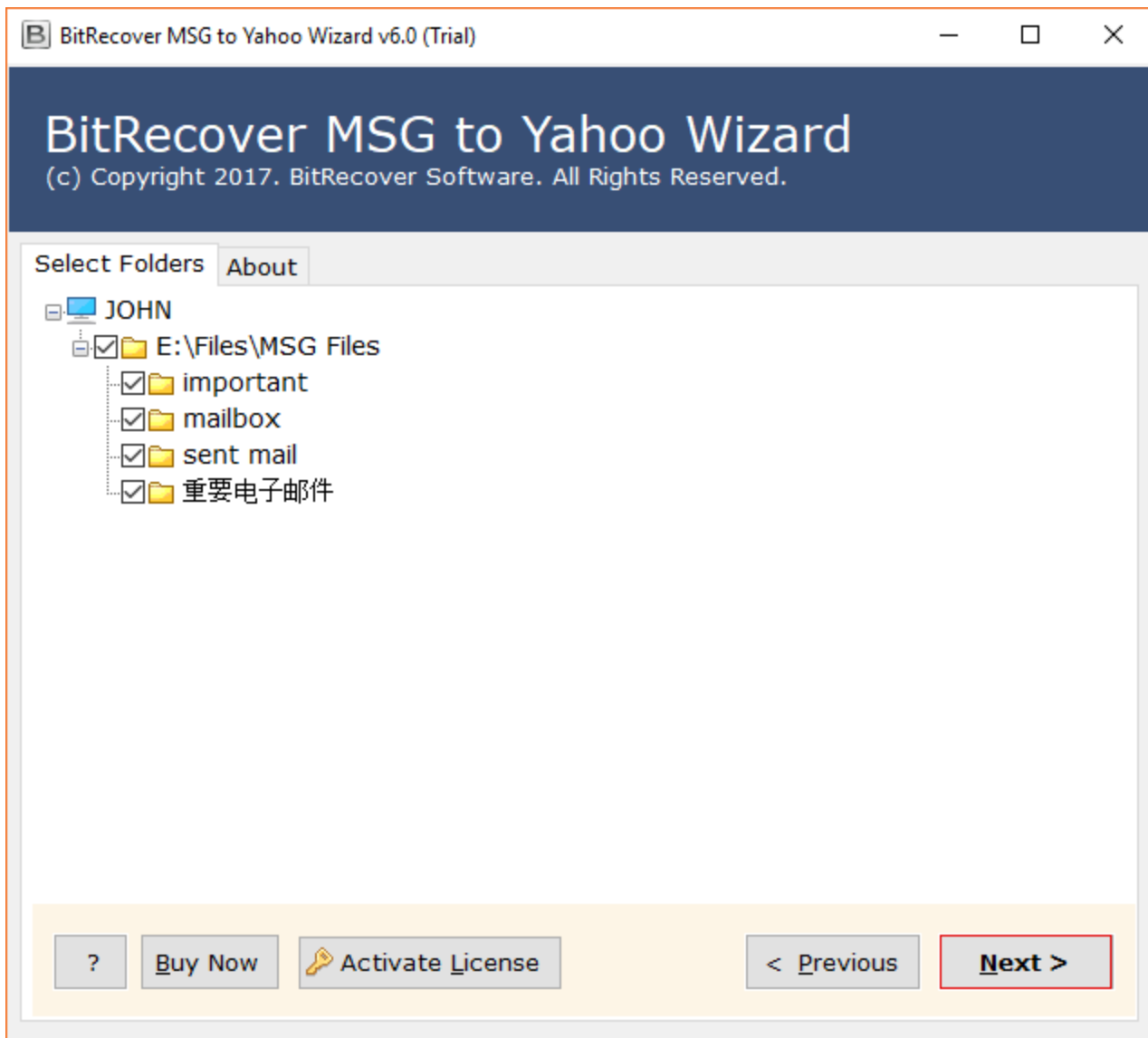
Step 1: Download the MSG to Yahoo Mail Tool and open it.



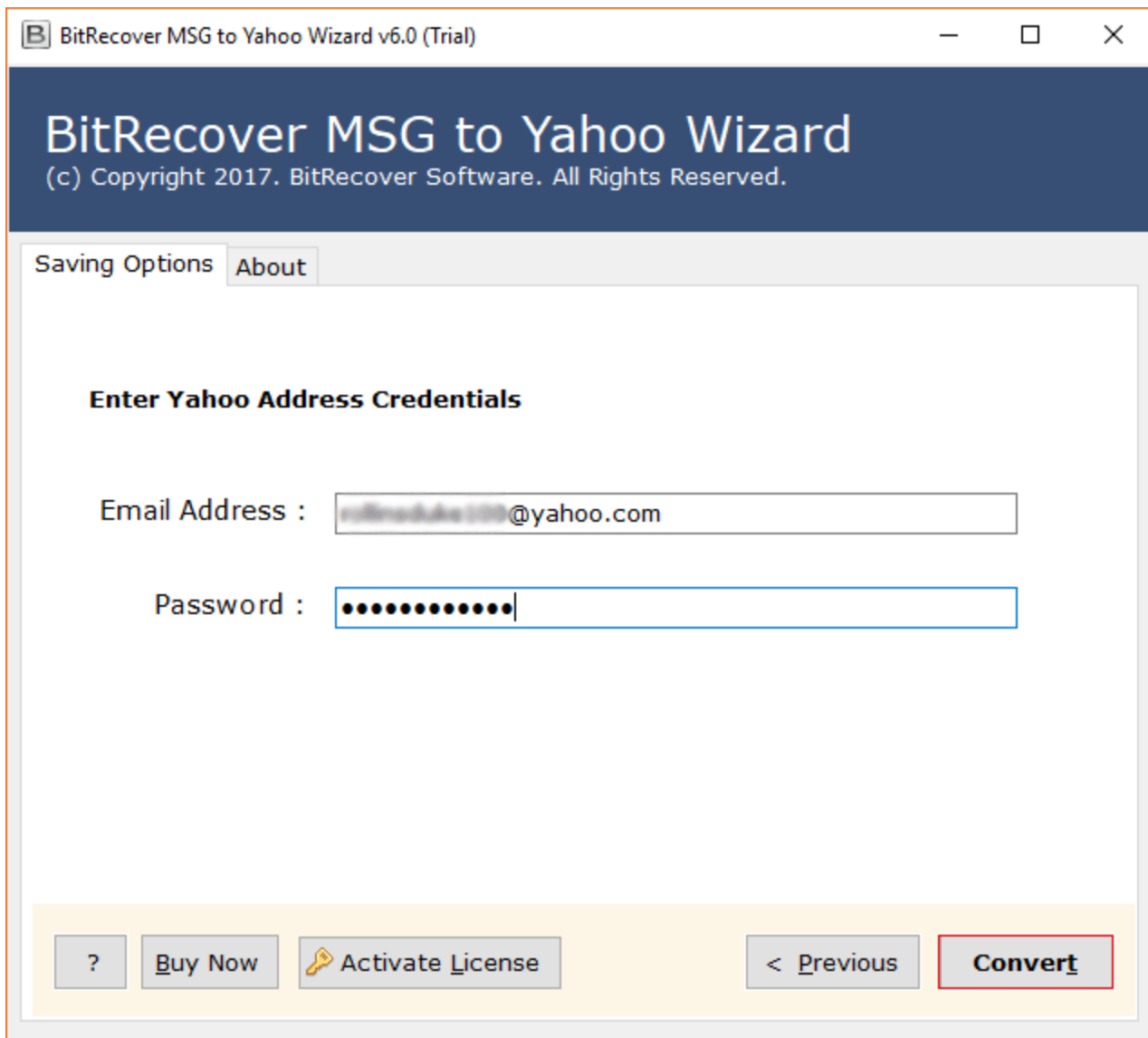
Step 2: Click on the **Select** button to select the files which you wish to convert.



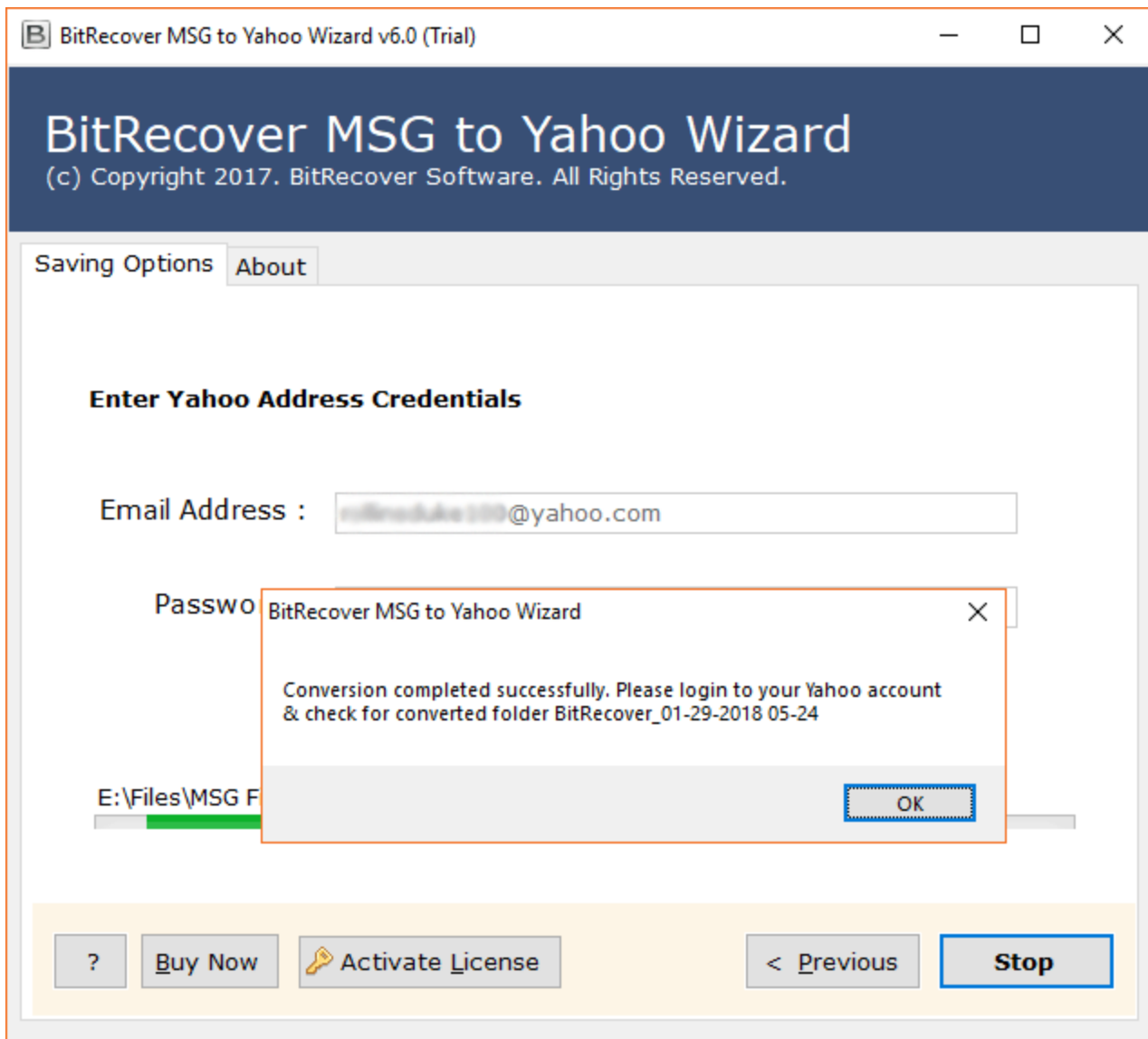
Step 3: Tick the required files/folders and click on the **Next** button.



Step 4: The software would ask for your Yahoo Address credentials. Fill the credentials and click on the **Convert** button.



Step 5: Once the conversion has been completed successfully, you will get a prompt message informing you about the successful conversion as well as the destination path.



By following the above 5 steps, you can efficiently import your MSG files into Yahoo Mail using this MSG to Yahoo Tool. The software's intuitive interface ensures that even users with limited technical expertise can navigate the import process with ease. Its compatibility with various Yahoo domains such as Yahoo.com and Yahoo.co.uk makes it a versatile choice for users seeking to manage their email messages within Yahoo Mail.

Conclusion

Thus, whether you are consolidating your email data or transitioning to Yahoo Mail, this tool offers a reliable and user-friendly solution. A notable feature of this software is its ability to maintain all the email components and attachments during the import process, ensuring that your data remains intact. Additionally, the tool supports batch import, allowing you to process multiple MSG files simultaneously, thereby saving time and effort.