

## BitRecover for Office 365 Email Address Extractor Tool

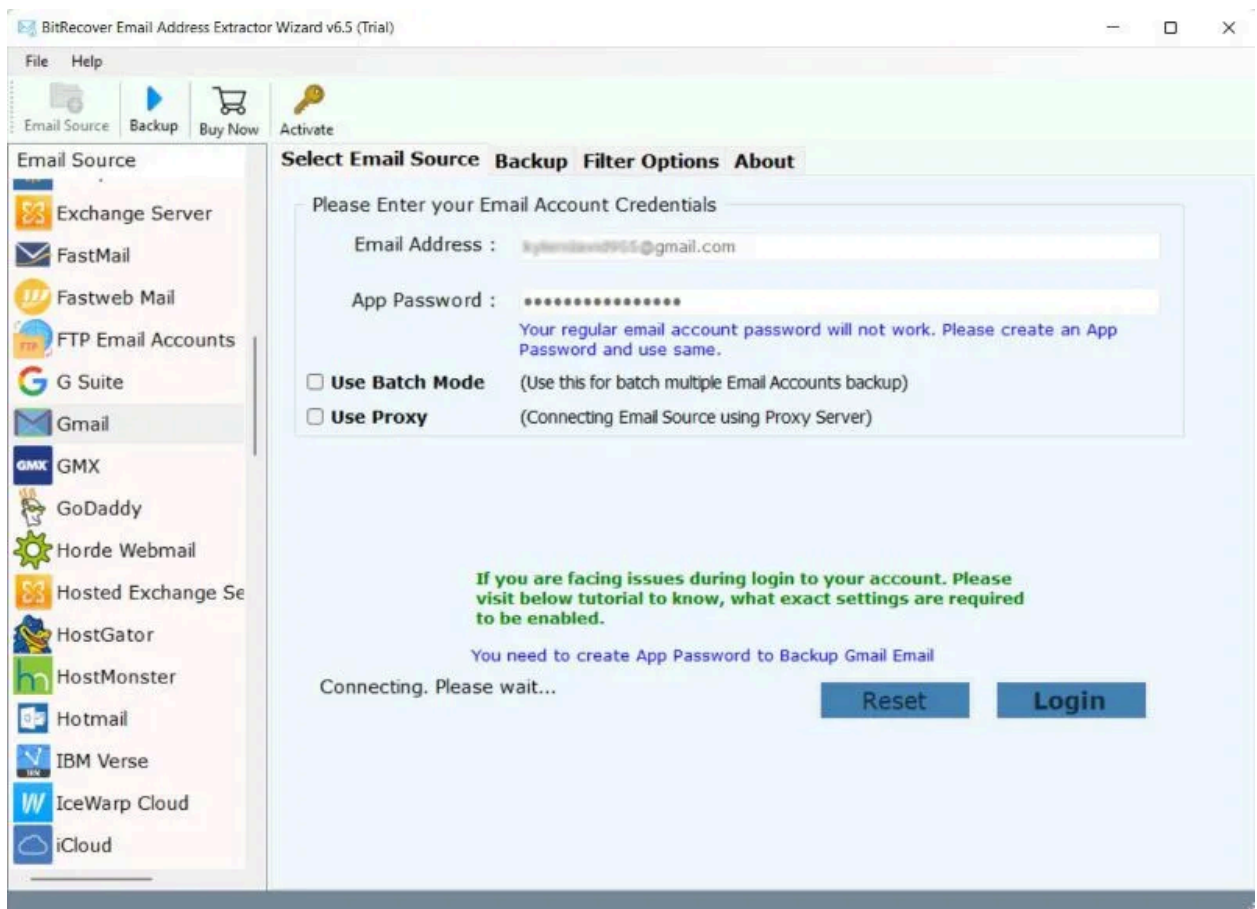
Extract Office 365 email addresses from 90+ services with advanced filters.

BitRecover for Office 365 Email Address Extractor helps extract email addresses from 90+ services like Office 365 and Microsoft 365. It detects email IDs from To, From, Cc, Bcc, and the email body and saves them in a CSV file. The tool supports batch extraction which allows users to export multiple email addresses at once. With advanced filters, users can extract emails by date, subject, or folder while keeping data secure.

Visit the official page: [BitRecover for Office 365 Email Address Extractor Software](#)

### How to Extract Office 365 Email Addresses in Bulk?

1. Download and launch the software and then select the required email client from the list.



2. And then, enter the login details of the email service.

The screenshot shows the 'BitRecover Email Address Extractor Wizard v6.5 (Trial)' window. The 'Select Email Source' tab is active. On the left, a list of email sources includes Exchange Server, FastMail, Fastweb Mail, FTP Email Accounts, G Suite, Gmail, GMX, GoDaddy, Horde Webmail, Hosted Exchange Se, HostGator, HostMonster, Hotmail, IBM Verse, IceWarp Cloud, and iCloud. Gmail is selected. The main area contains a form for 'Please Enter your Email Account Credentials'. The 'Email Address' field contains 'kylandavid955@gmail.com' and the 'App Password' field contains a series of dots. A note states: 'Your regular email account password will not work. Please create an App Password and use same.' Below the form, two options are listed: 'Use Batch Mode (Use this for batch multiple Email Accounts backup)' and 'Use Proxy (Connecting Email Source using Proxy Server)'. Both are currently unchecked. At the bottom, there is a green warning message: 'If you are facing issues during login to your account. Please visit below tutorial to know, what exact settings are required to be enabled.' and a note: 'You need to create App Password to Backup Gmail Email'. Two buttons, 'Reset' and 'Login', are at the bottom right. The 'Login' button is highlighted with a red box.

3. Next, for extracting email addresses from multiple accounts at once then enable the "Use Batch Mode" option and if you are using a proxy

server then enable the "Use Proxy" button and hit the "Login" button.

The screenshot shows the BitRecover Email Address Extractor Wizard v6.5 (Trial) window. The interface includes a menu bar with 'File' and 'Help', and a toolbar with 'Email Source', 'Backup', 'Buy Now', and 'Activate'. On the left, a list of email sources is displayed, with 'Gmail' selected. The main area is titled 'Select Email Source' and contains a form for entering email account credentials. The form includes fields for 'Email Address' and 'App Password', with a note stating 'Your regular email account password will not work. Please create an App Password and use same.' Below these fields are two checkboxes: 'Use Batch Mode' (with the description '(Use this for batch multiple Email Accounts backup)') and 'Use Proxy' (with the description '(Connecting Email Source using Proxy Server)'). At the bottom, there is a green warning message: 'If you are facing issues during login to your account. Please visit below tutorial to know, what exact settings are required to be enabled.' and a note: 'You need to create App Password to Backup Gmail Email'. Two buttons, 'Reset' and 'Login', are located at the bottom right.

BitRecover Email Address Extractor Wizard v6.5 (Trial)

File Help

Email Source Backup Buy Now Activate

Select Email Source Backup Filter Options About

Please Enter your Email Account Credentials

Email Address :

App Password :

Your regular email account password will not work. Please create an App Password and use same.

☐ Use Batch Mode (Use this for batch multiple Email Accounts backup)

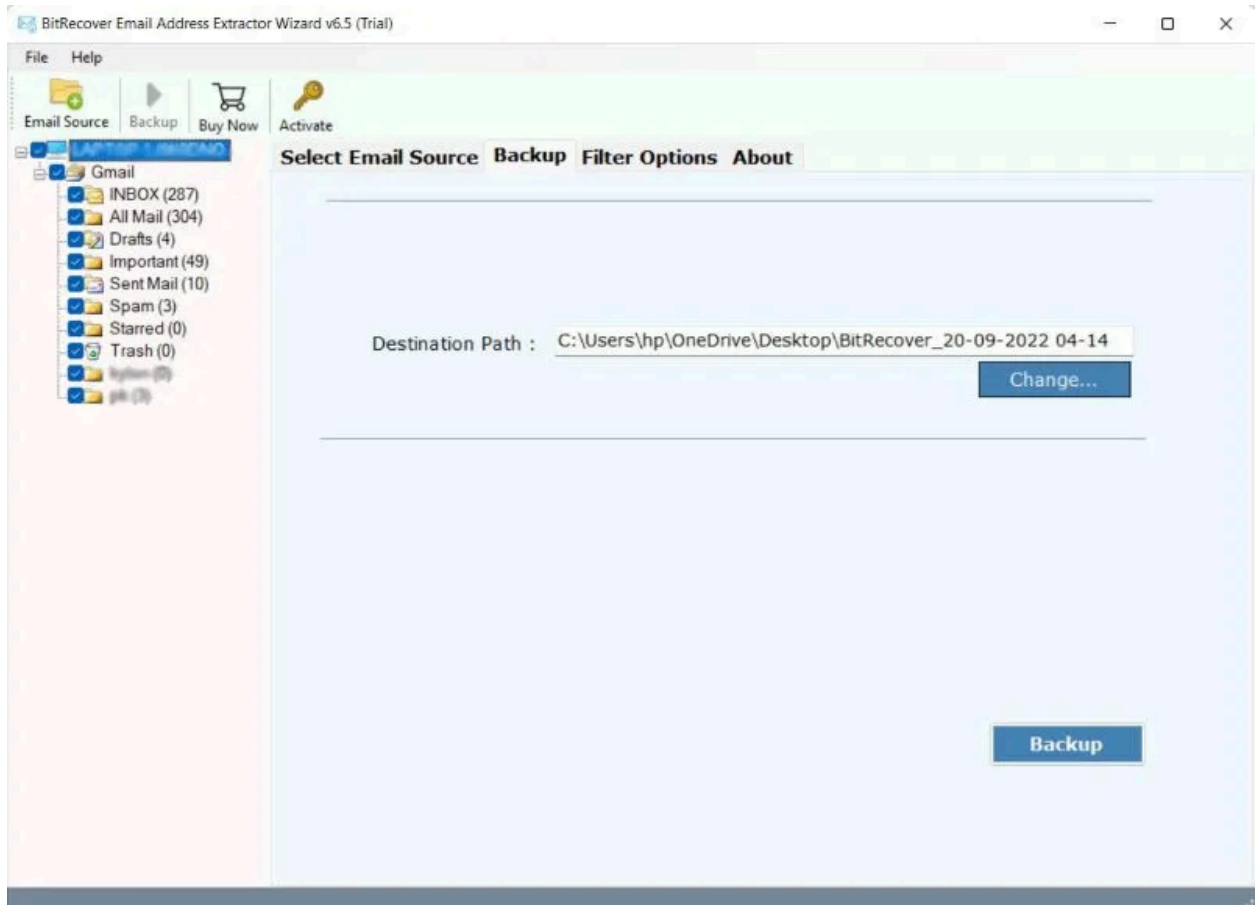
☐ Use Proxy (Connecting Email Source using Proxy Server)

If you are facing issues during login to your account. Please visit below tutorial to know, what exact settings are required to be enabled.

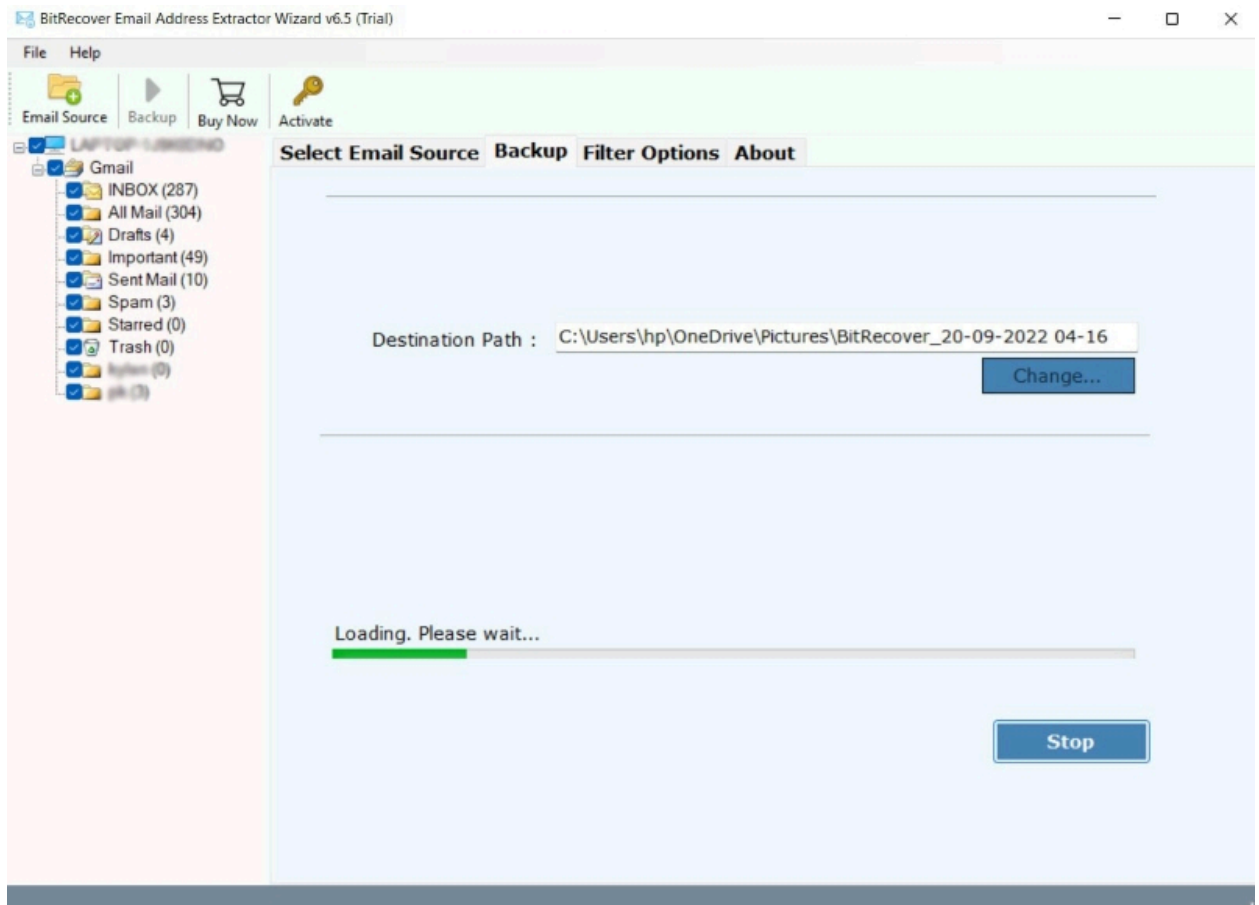
You need to create App Password to Backup Gmail Email

Reset Login

4. Now all the data will appear on the software panel and choose the required data from here.



5. Lastly, select the destination path and then click on the "Backup" icon to start the process.



## Conclusion

Overall, BitRecover for Office 365 Email Address Extractor make it easy to collect email addresses from 90+ services. With batch extraction and advanced filters users can quickly save email IDs in a CSV file. Simply log in, select data and extract addresses in just a few clicks.