

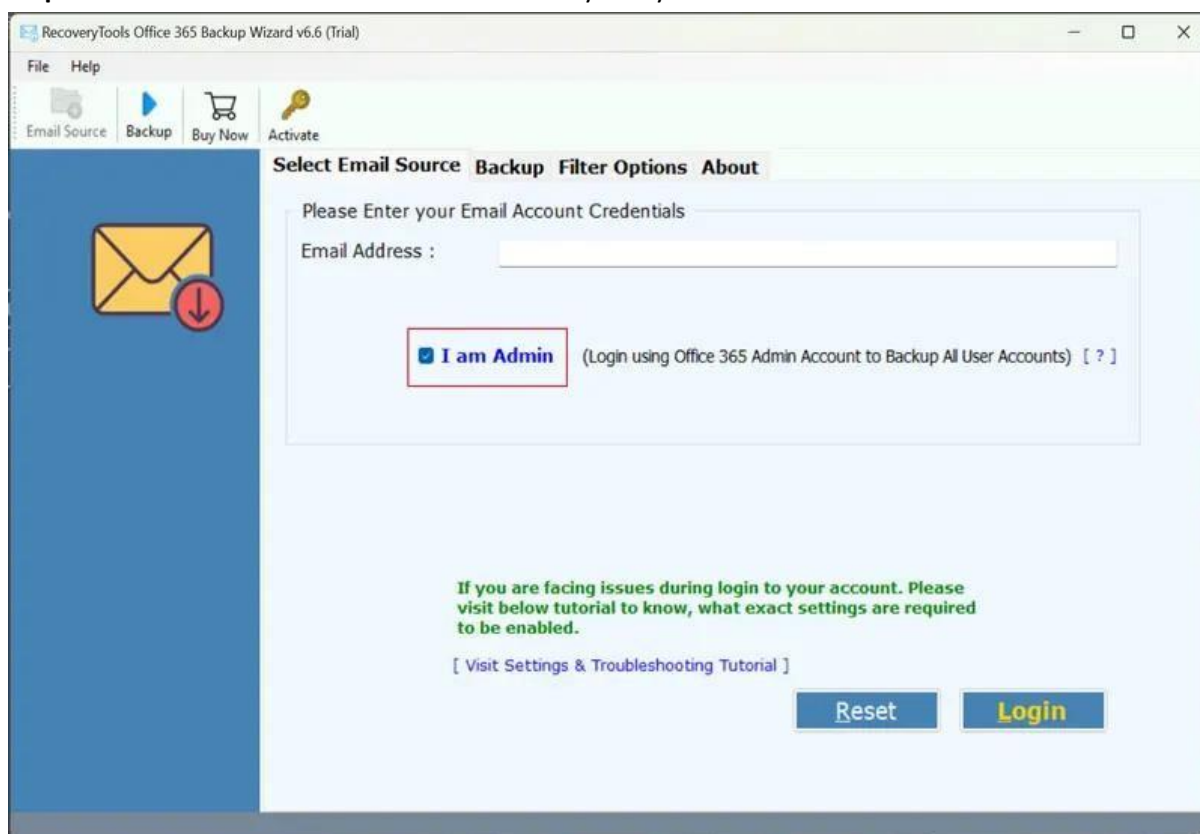
BitRecover For Office 365 to PST Export Tool

Best Software to Export Office 365 to PST with Emails, Contacts, and Calendars

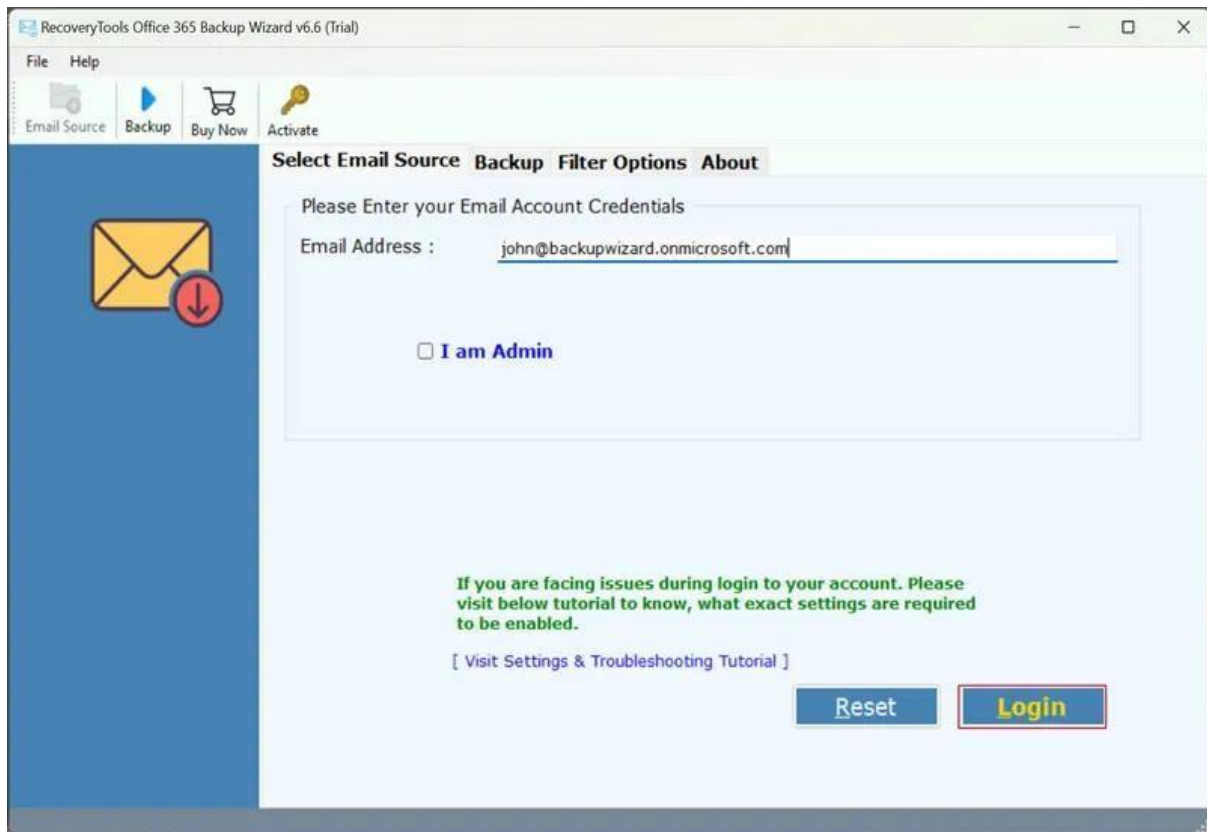
The BitRecover for Office 365 to PST Export Tool is an expert-recommended tool that allows users to bulk migrate Office 365 mailbox to PST, PDF, DOC, EML, TXT, OLM, Outlook.com, Yahoo Mail, IBM Verse, Gmail, Lotus Notes, HTML, and so on. Plus, to make the resultant file precise, the tool offers advanced filters such as Date Range, Subject, Exclude Folders, etc., and an easy selection of specific folders such as Bin, Draft, Inbox, Spam, etc. Most importantly, this Office 365 to PST Export Tool also ensures proper management of resultant files as it maintains the hierarchy of labels and also provides the file-naming option to access them swiftly.

Visit the official page: [BitRecover for Office 365 to PST Export Tool](#)

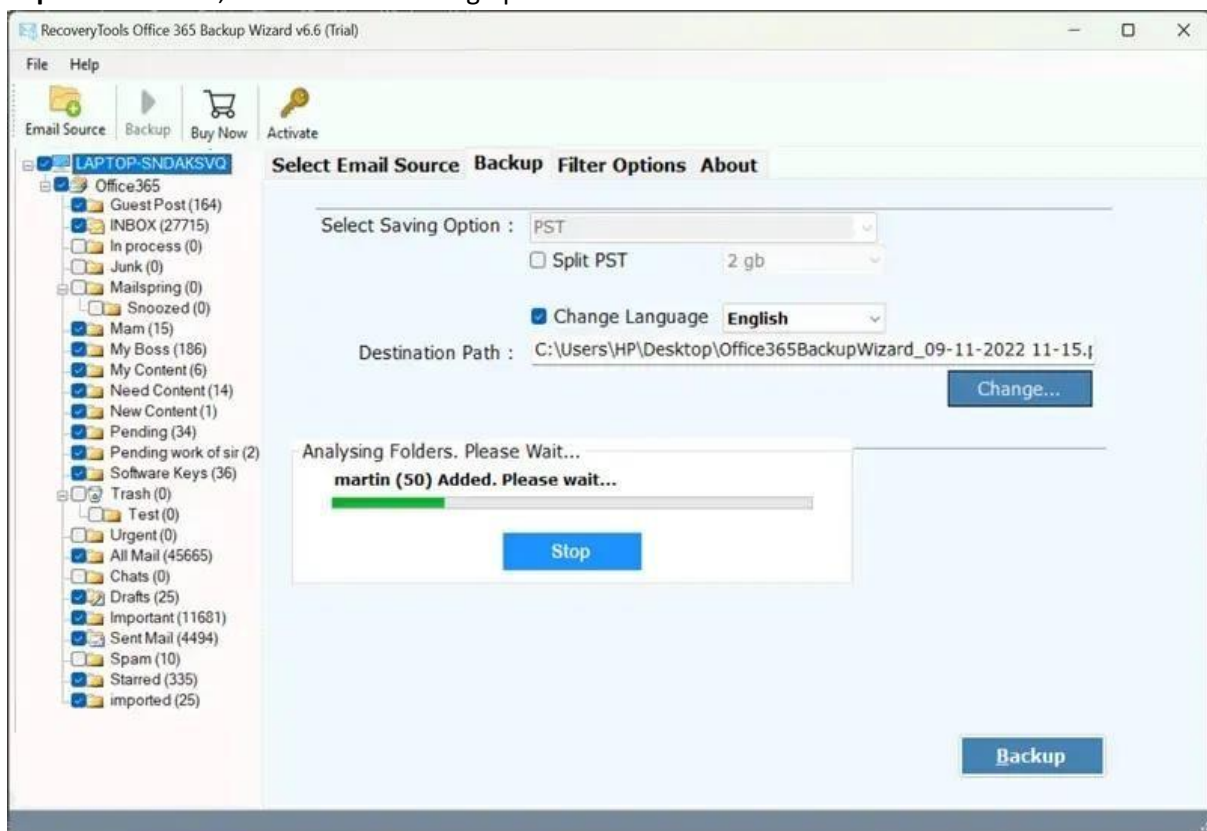
Step 1: Download the software and run that on your system.



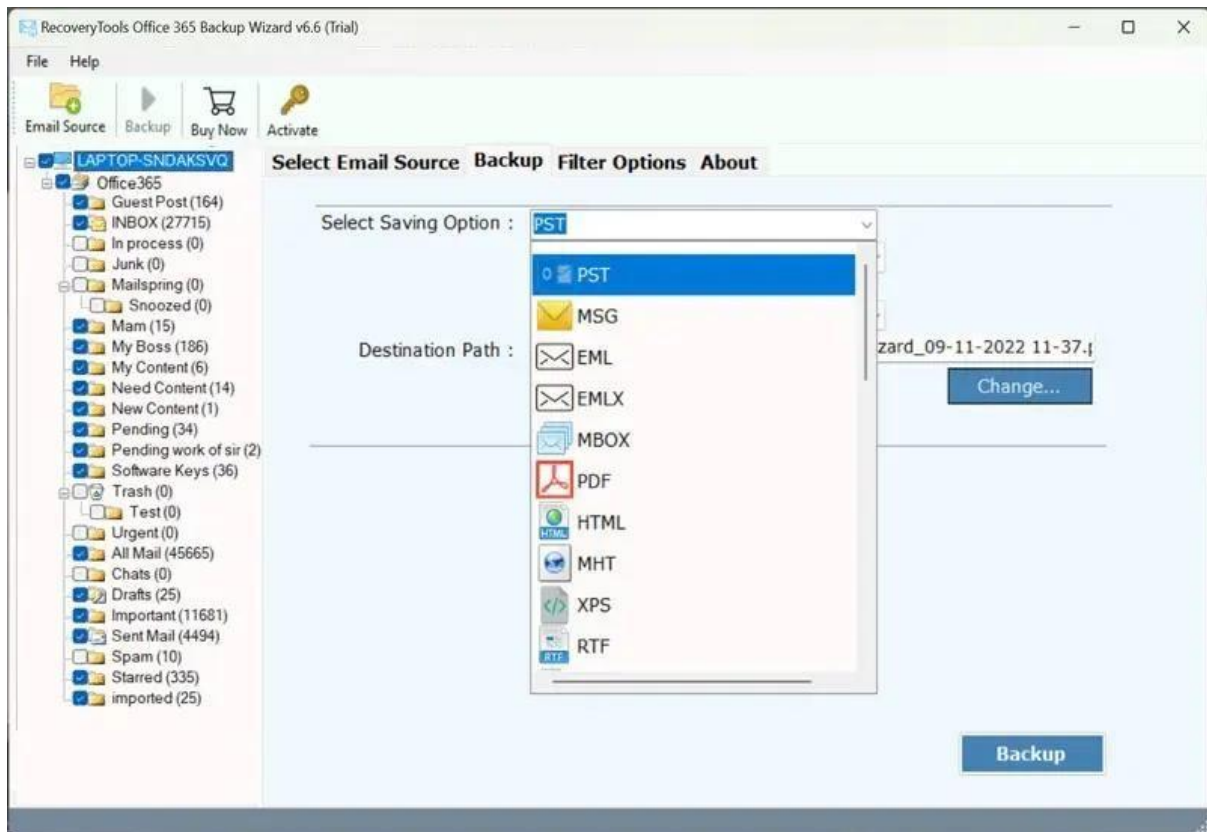
Step 2: Share the Office 365 credentials and sign in positively.



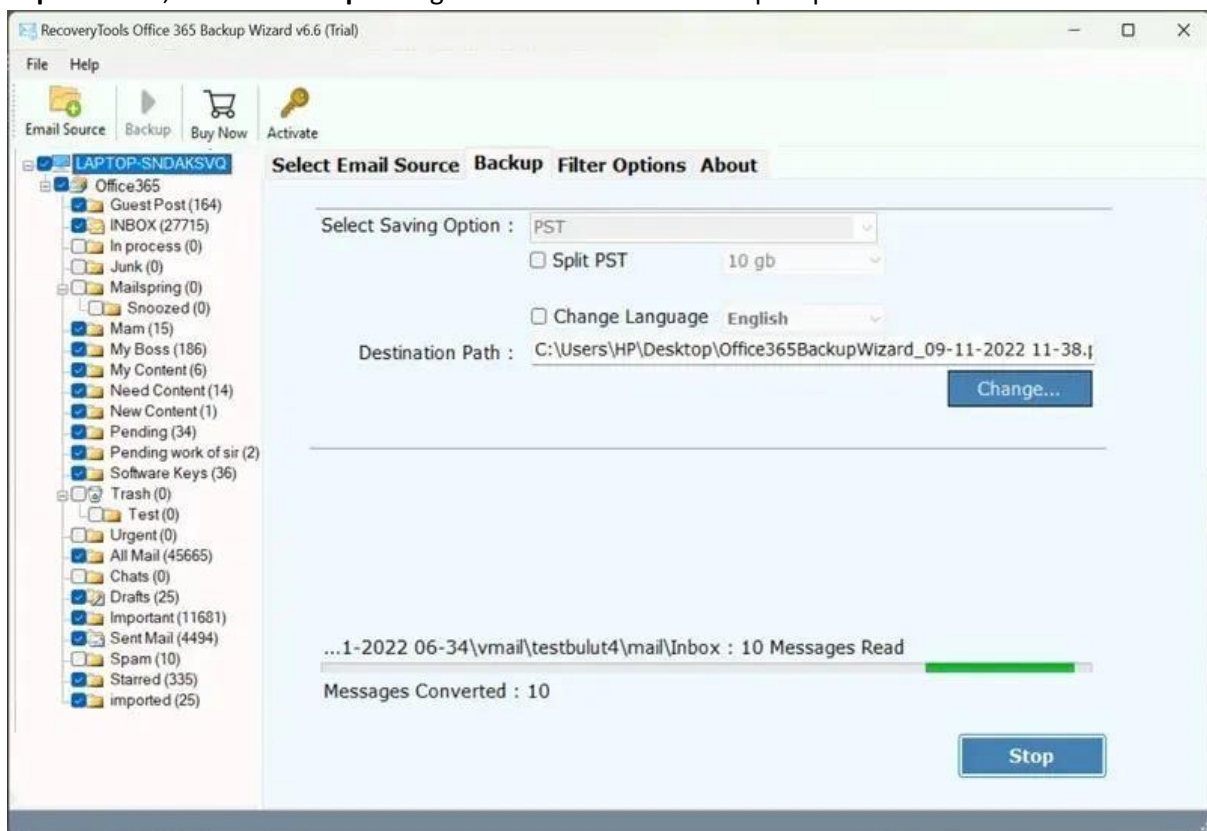
Step 3: Once done, choose **PST** as saving option.



Step 4: Now, select a **file-naming option** and **destination**. You can also **apply filters** for better results.



Step 5: At last, click on **Backup** to begin the Office 365 to PST export process.



When the process to migrate Office 365 email completes, the tool opens up a SavingLog.txt file on the screen. This file is more like a summary report of the entire Office 365 to PST export procedure which includes status, date, time, number of items, saving folder, type of backup, and so on.

Conclusion

The BitRecover for Office 365 to PST Export Tool is an easy-to-use software that is highly used and recommended by industry experts. This tool swiftly works with all the editions or versions of Windows and Mac operating systems. Over and above that, this Office 365 to PST Export Tool also provides a freemium version that allows the user to try and test its features so that they can make a wiser decision on purchasing the required pro license.