

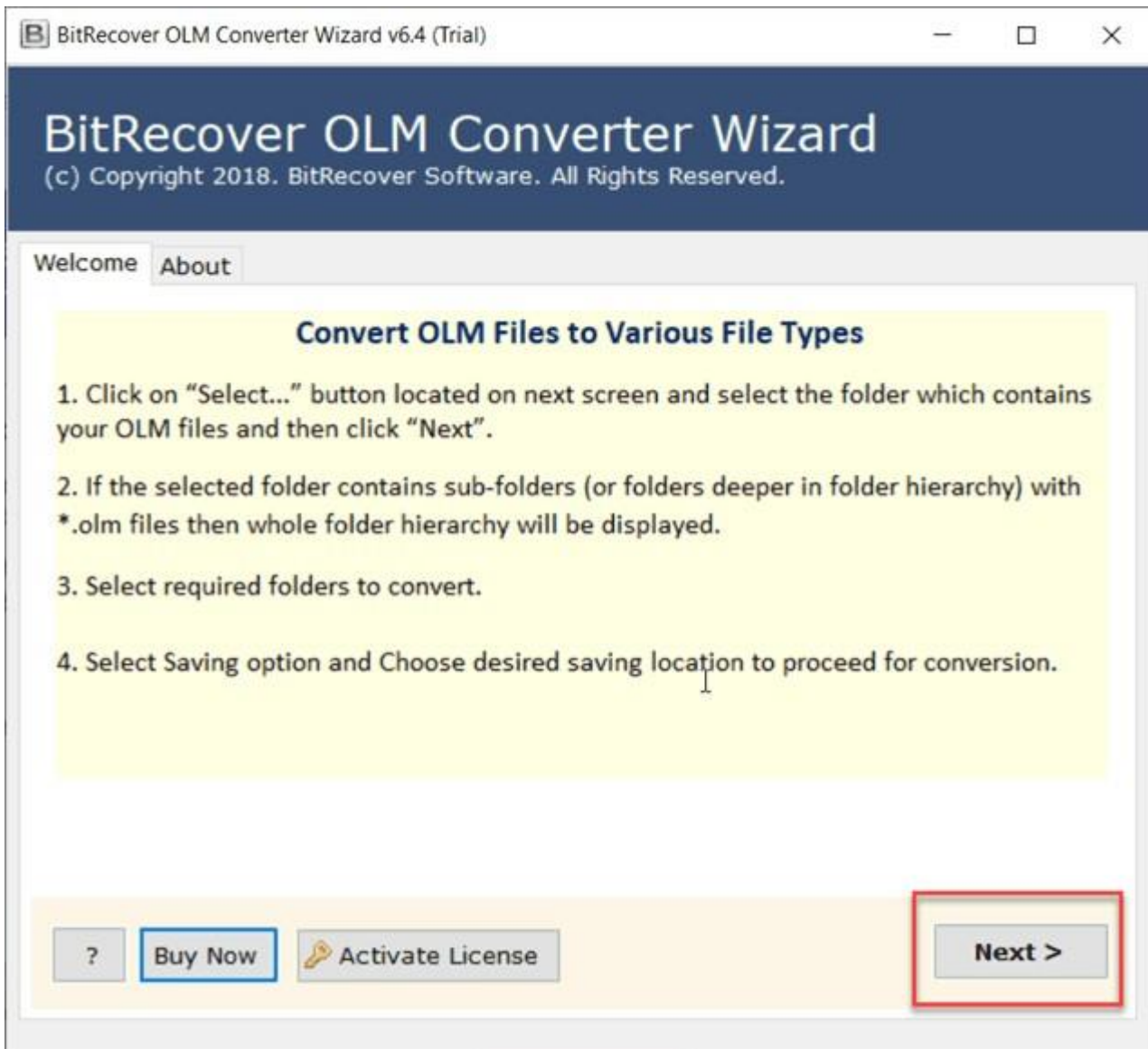
## BitRecover for OLM to PST Converter Tool

Advanced tool to export OLM files into PST and 10 other file formats

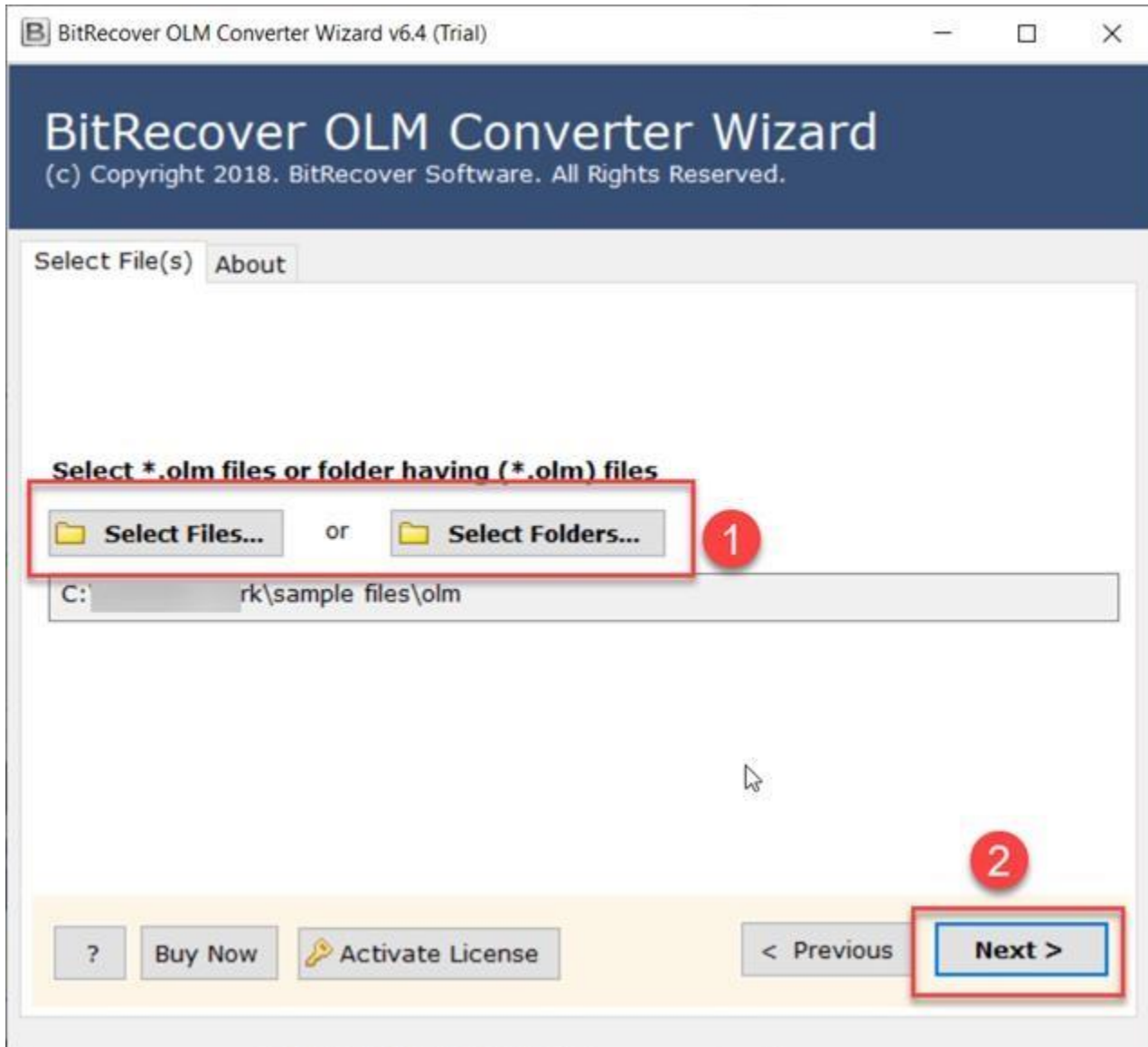
Managing email data from OLM files can be a tedious task, especially when transferring data between platforms. This is where the OLM to PST Converter Tool comes into play which basically simplifies this process by allowing you to convert OLM files into PST file formats and other formats such as PST, MBOX, EML and more. It ensures seamless migration of your emails, calendars, and other data while preserving the original structure.

**Visit the official page:** [BitRecover for OLM to PST Converter Tool](#)

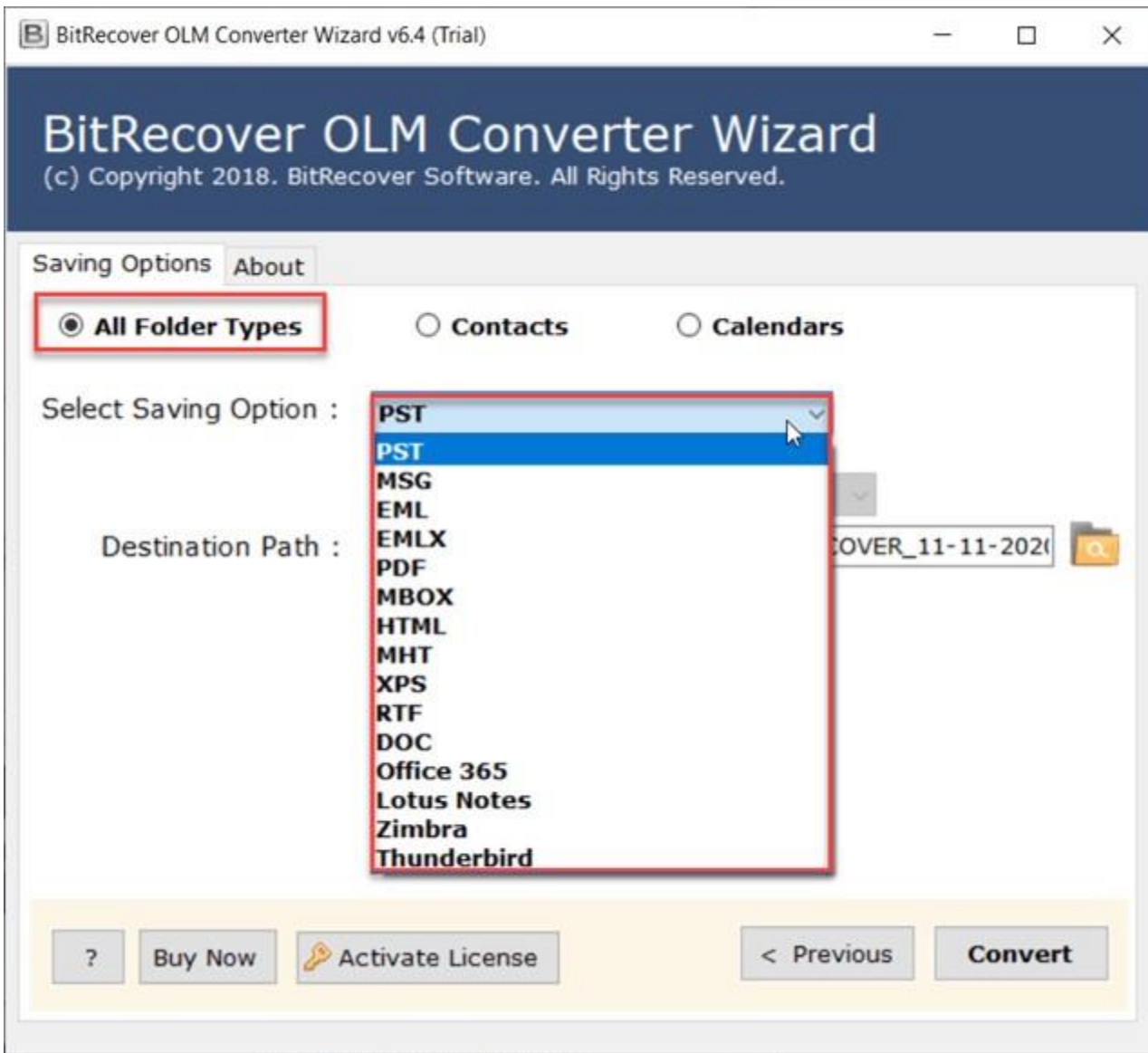
**Step 1: Download** the OLM to PST Converter Tool and after opening it, go through the instructions displayed in the software panel. Once you are done with the instructions, click on the **Next** button.



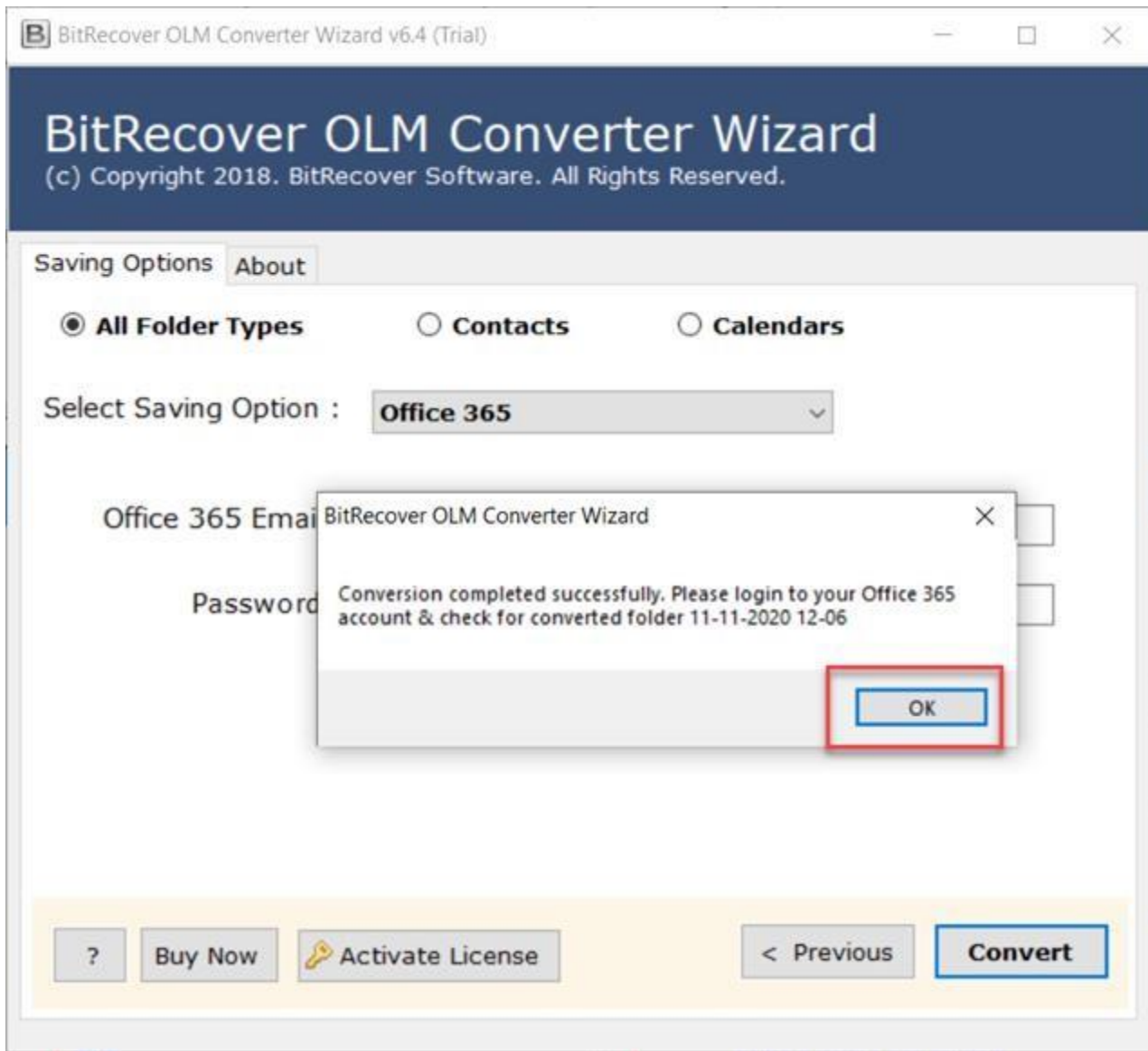
**Step 2:** If you wish to upload individual files, click on the **Select Files** option or if you wish to upload folders, click on the **Select Folders** option.



**Step 3:** Select the saving option as PST file format as per your requirement from the displayed list of options.



**Step 4:** Let the software complete the conversion process. Once the process is successfully completed, you will get a prompt message informing you about the successful conversion as well as the destination path.



By following the above 4 steps, you can efficiently convert your OLM files to PST file format using this OLM to PST Converter Wizard. Apart from this, the software's friendly user-interface and support for multiple formats make it a convenient solution for managing email data across different platforms.

### **Conclusion**

Thus, whether you are switching platforms or archiving your emails, this tool is designed to cater to your needs efficiently. One of the unique features of this software is its ability to handle large files without any data loss while maintaining the original folder hierarchy. Additionally, it provides options like selective conversion and compatibility with multiple email clients, ensuring a smoother user experience.