

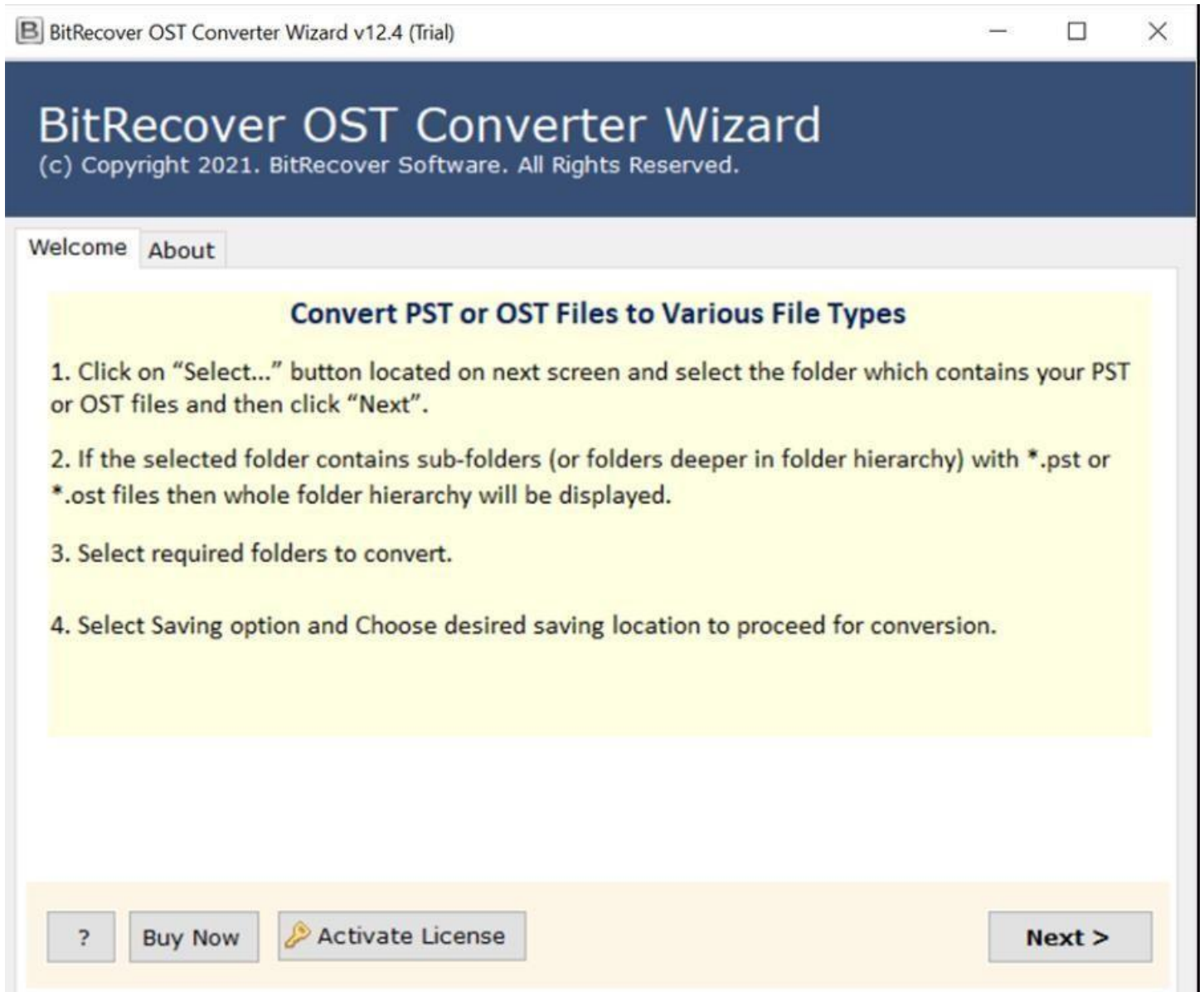
BitRecover for OST to Outlook Importer

Reliable solution to import OST files to Outlook as well as other multiple formats

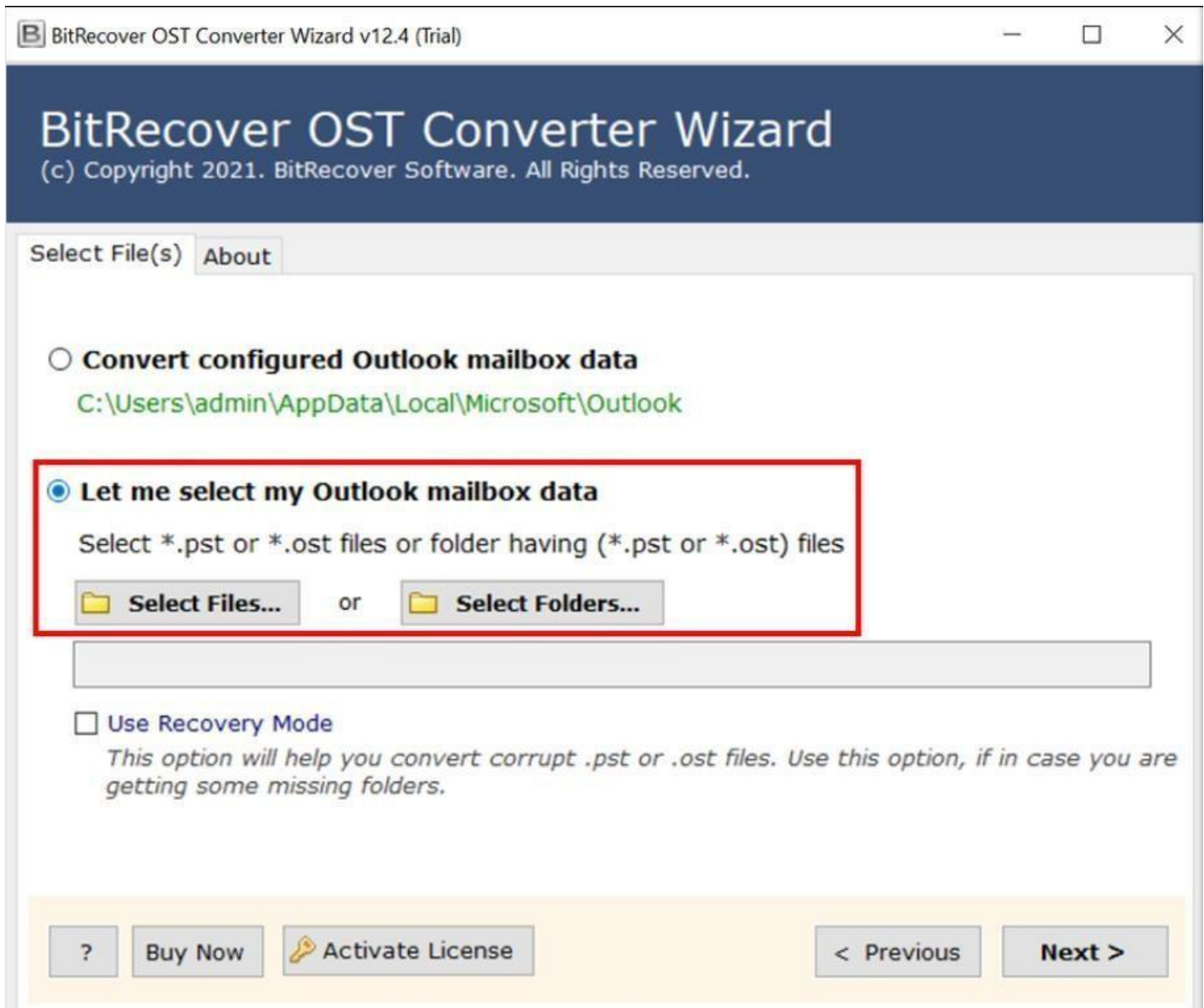
Managing and converting OST (Offline Storage Table) files can be challenging, especially when dealing with large volumes of email data. This is where OST to Outlook Converter Tool comes into play which basically simplifies this process by enabling users to import OST files into Outlook as well as other different formats. This ensures seamless access across and management of your emails across various platforms and email clients.

Visit the official page: [BitRecover for OST to Outlook Importer](#)

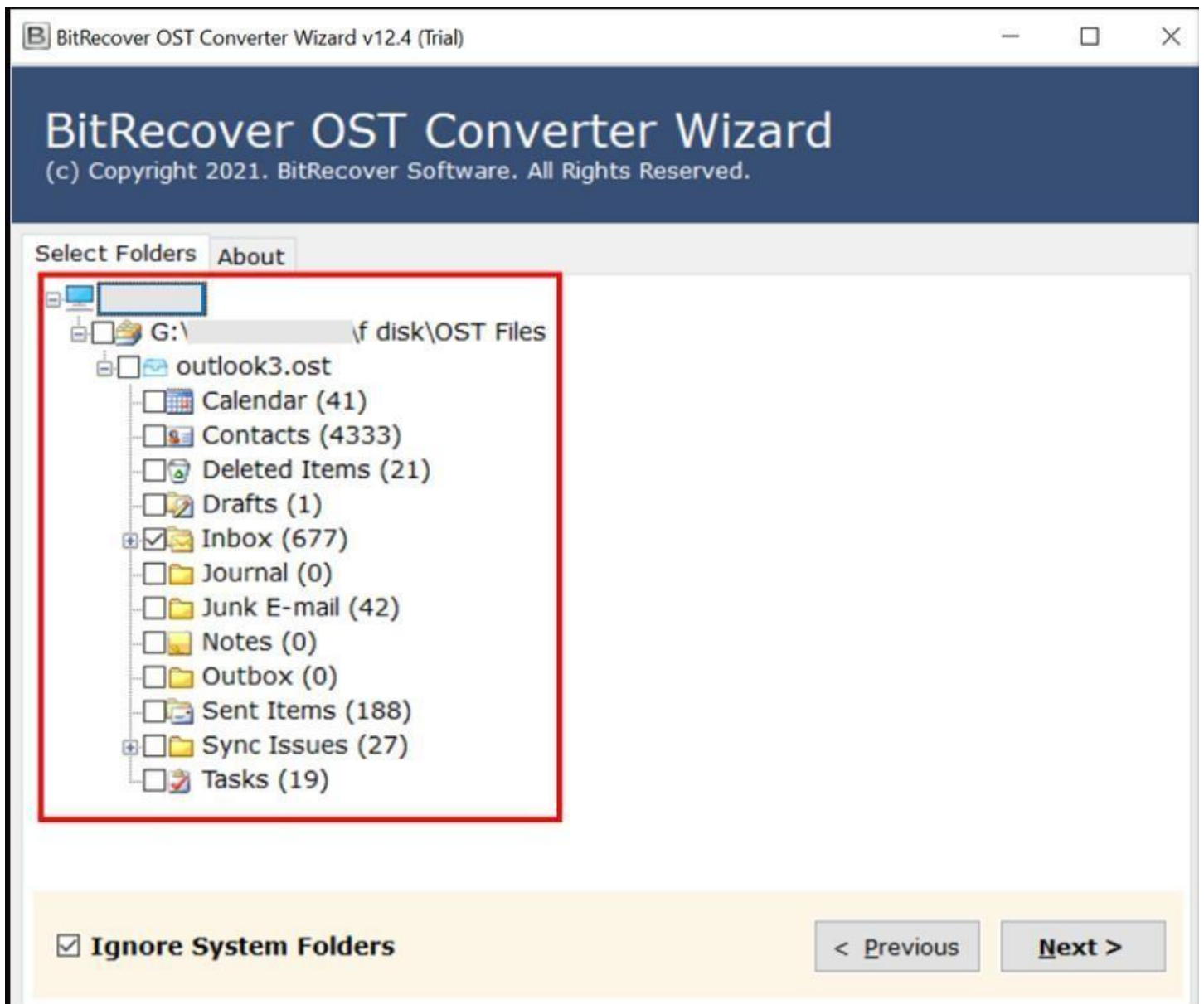
Step 1: Download the OST to Outlook Converter and after opening it, go through the instructions displayed in the software panel. Once you are done with the instructions, click on the **Next** button.



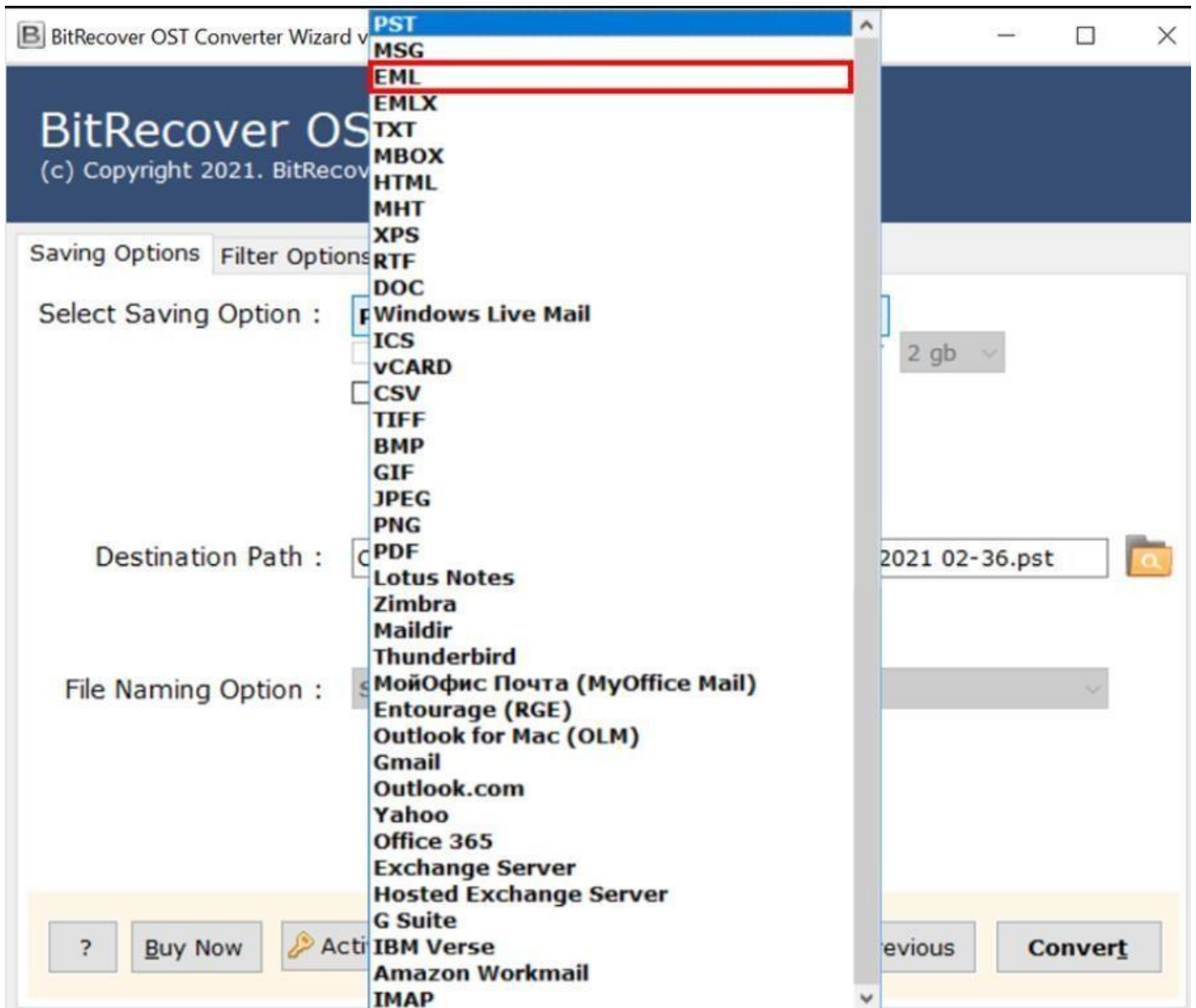
Step 2: If you have Email client installed, you can use the **Convert Configured Outlook Mailbox data**. However, if you wish to select files/folders manually, you can use the second option i.e. **Let me select my Outlook mailbox data**.



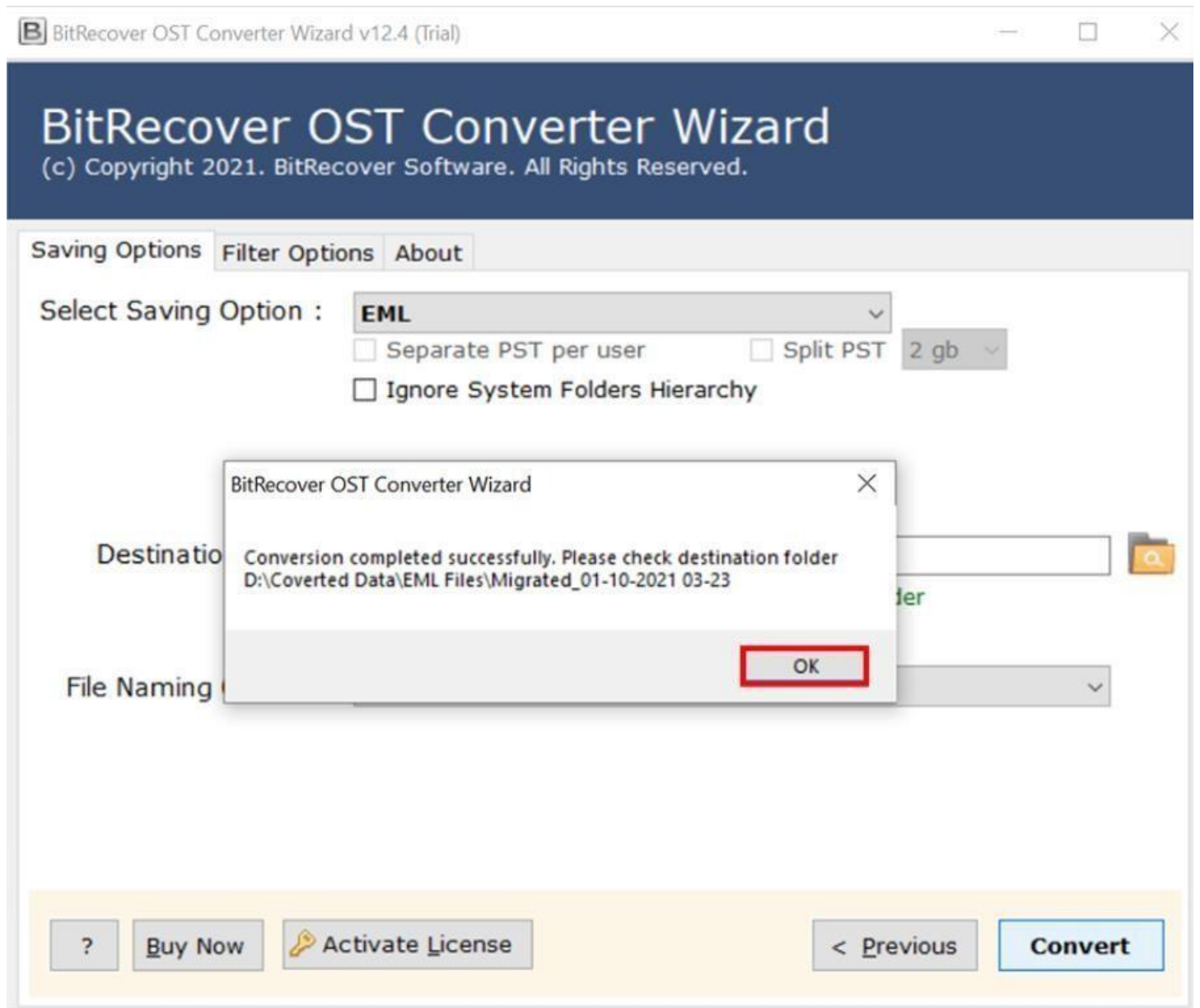
Step 3: Tick the required files/folders and click on the **Next** button.



Step 4: Select the file Saving Option out of the list of displayed options available.



Step 5: Select a destination path to save the converted files and then click on **Convert** button.



By following the above 5 steps, you can efficiently import your OST files to Outlook format using this OST to Outlook Importer. The software's intuitive interface ensures that even users with limited technical expertise can navigate the conversion process with ease. Its compatibility with various formats makes it a versatile choice for users seeking to manage their email messages across different platforms.

Conclusion

Thus, whether you are migrating to a new email client, consolidating your email data, or archiving information, this tool offers a reliable and user-friendly solution. A notable feature of this software is its ability to maintain the original folder hierarchy and email properties during the conversion process, ensuring that your data remains organized and intact. Additionally, the tool supports batch conversion, allowing you to process multiple OST files simultaneously, thereby saving time and effort.