

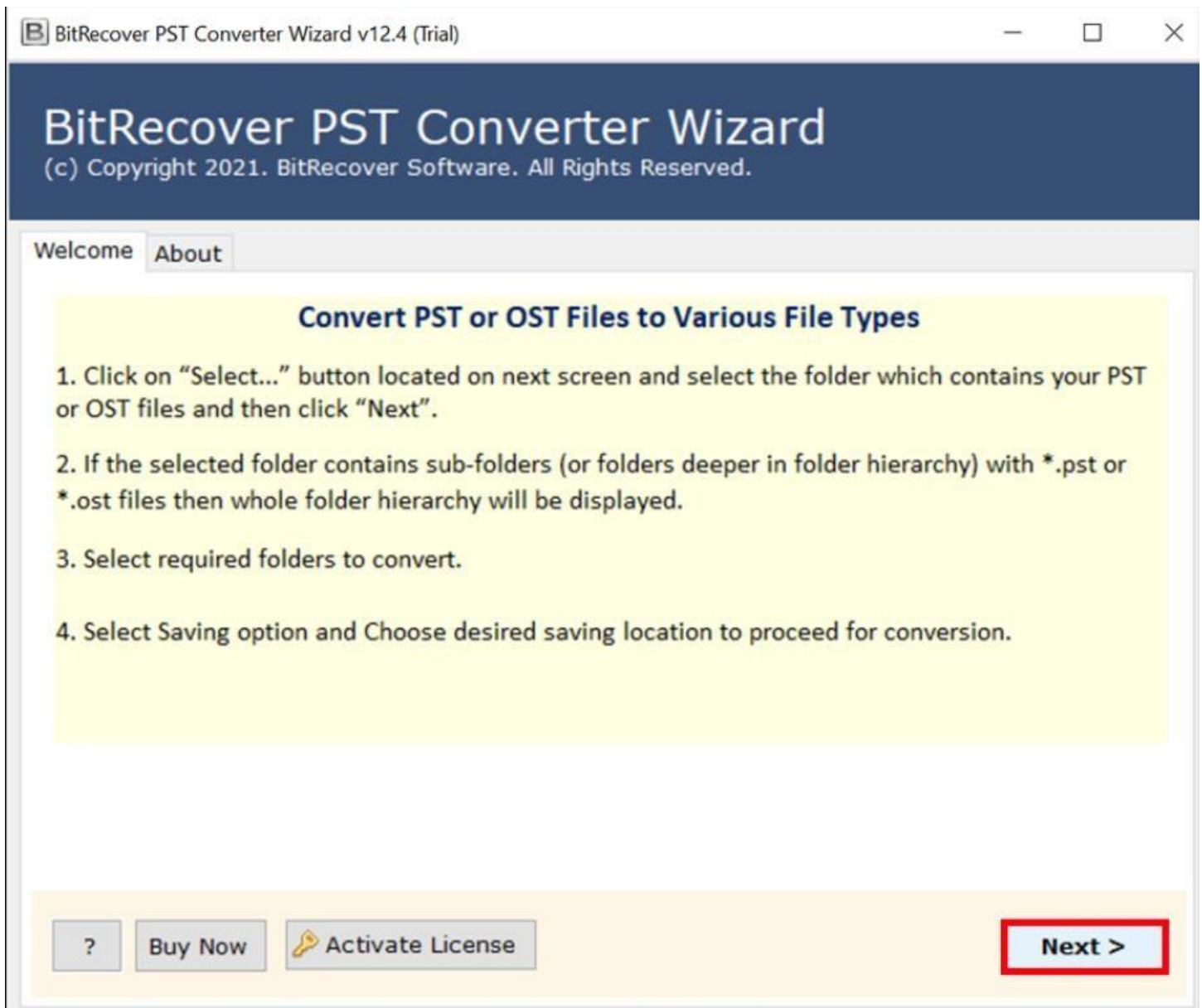
BitRecover for PST Import Tool

All-in-One reliable software to import PST files to multiple email clients

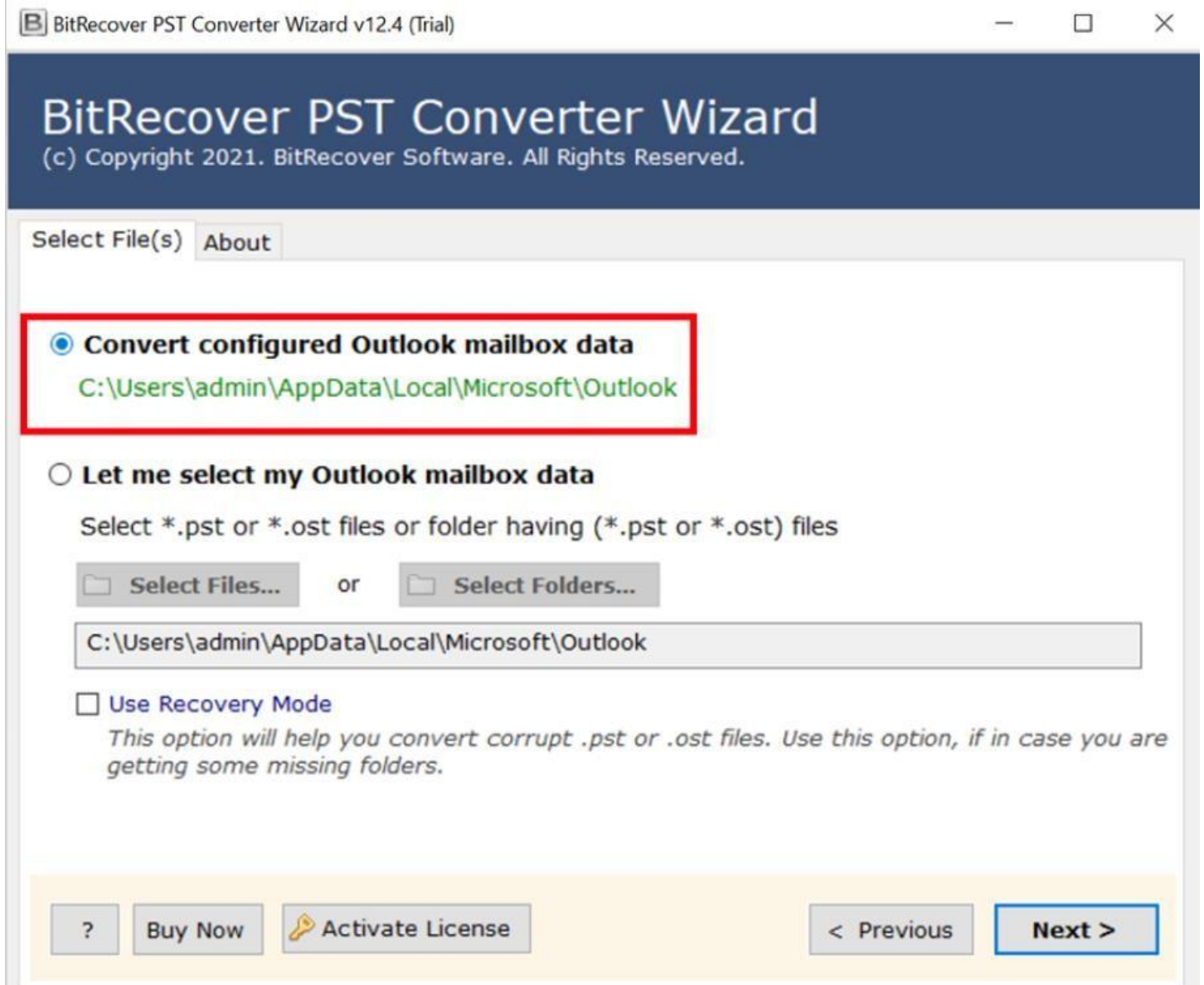
In our daily digital communications, Microsoft Outlook's PST files are widely used to store emails, contacts and other mailbox items as well. However, accessing or migrating this data to different platforms can be challenging due to compatibility issues. This is where the PST Import Tool comes into play which is a comprehensive tool designed to import PST file to various email clients. This versatility ensures seamless data migration and accessibility across various email clients and platforms.

Visit the official page: [BitRecover for PST Import Tool](#)

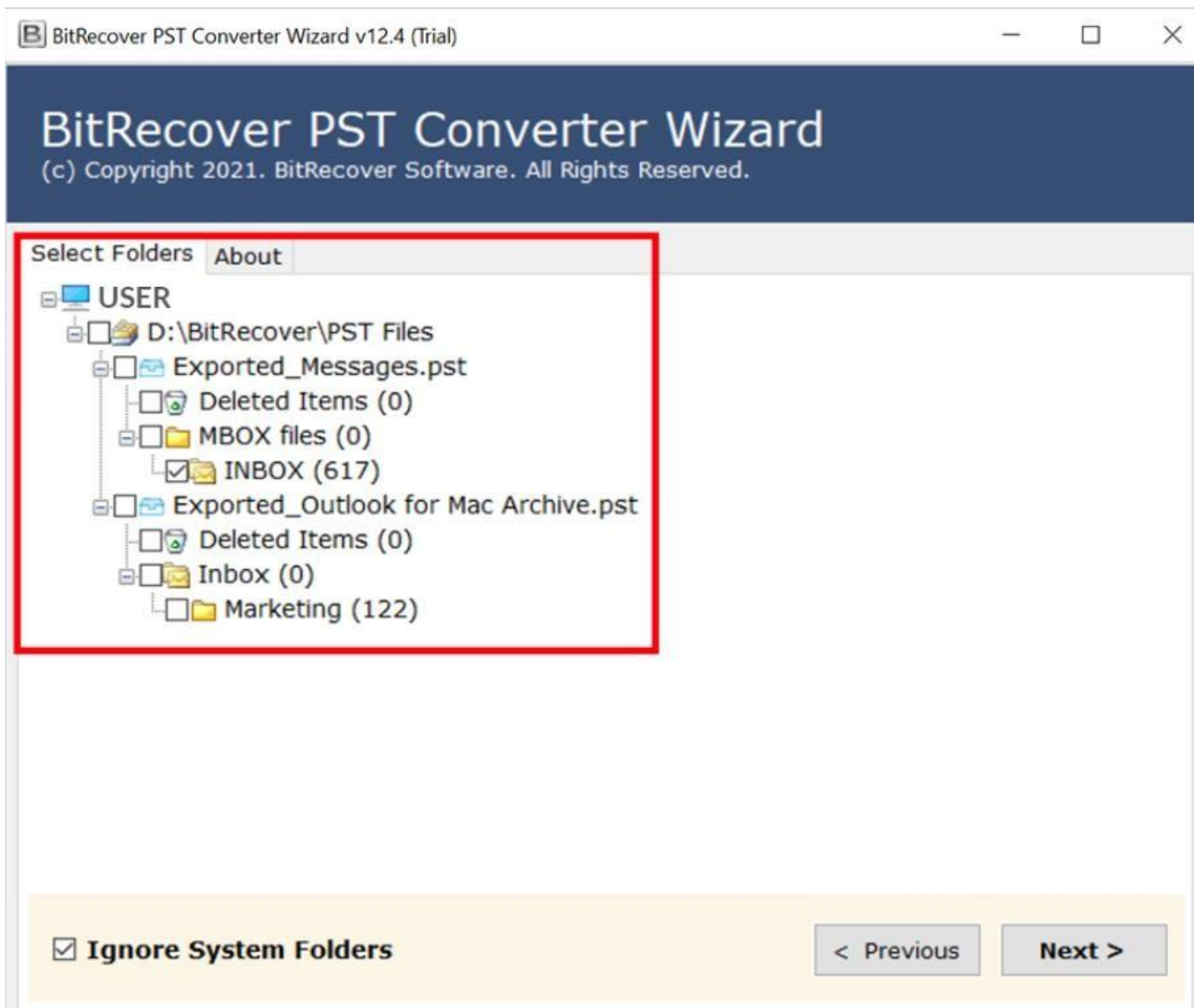
Step 1: Download the PST Import Tool and after opening it, go through the instructions given in the software panel. Once you are done with that, click on the **Next** button.



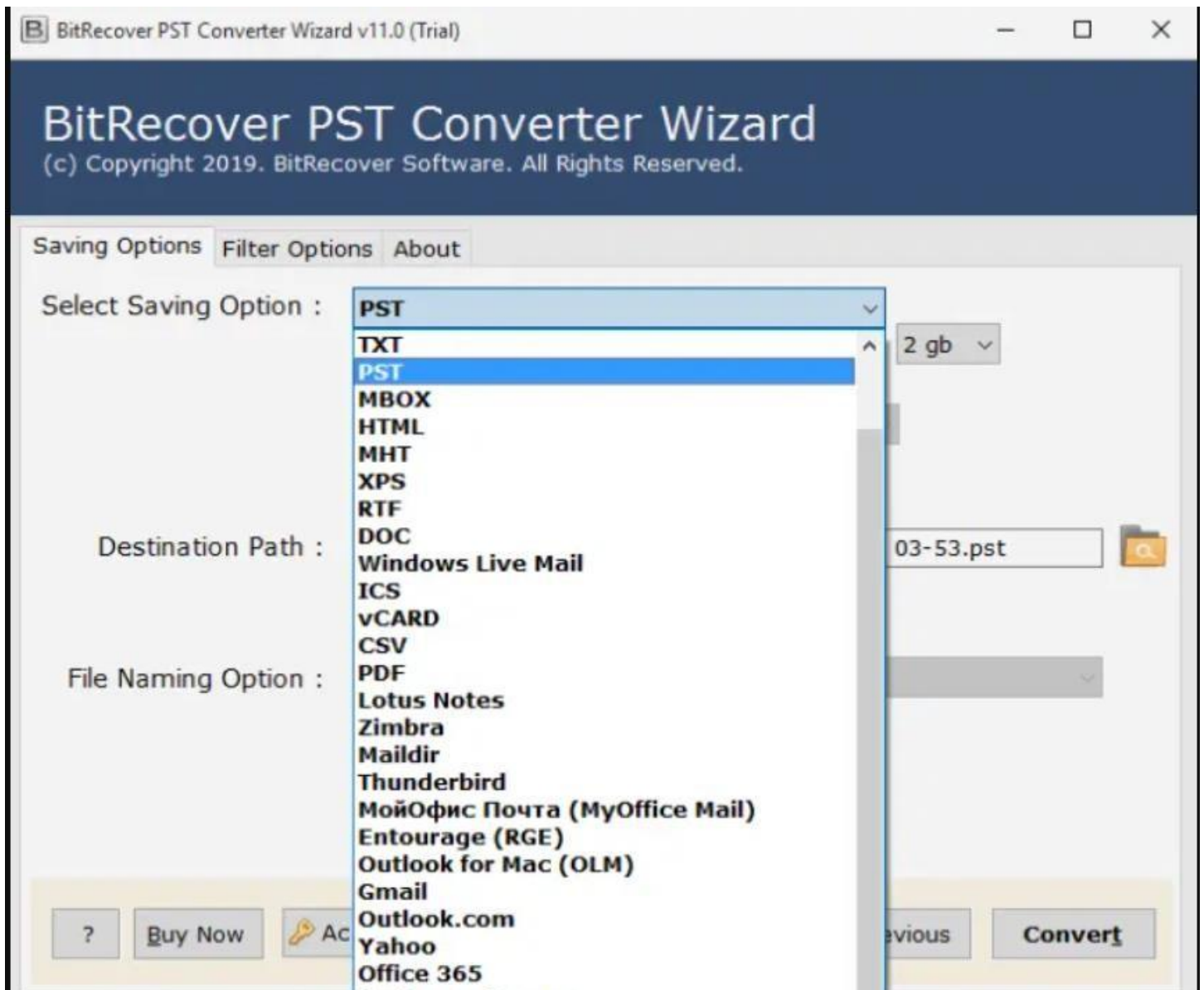
Step 2: If you have Email client installed, you can simply click on the **Convert Configured Outlook Mailbox Data**. If you don't have it installed then you can manually select files/folders using the second option.



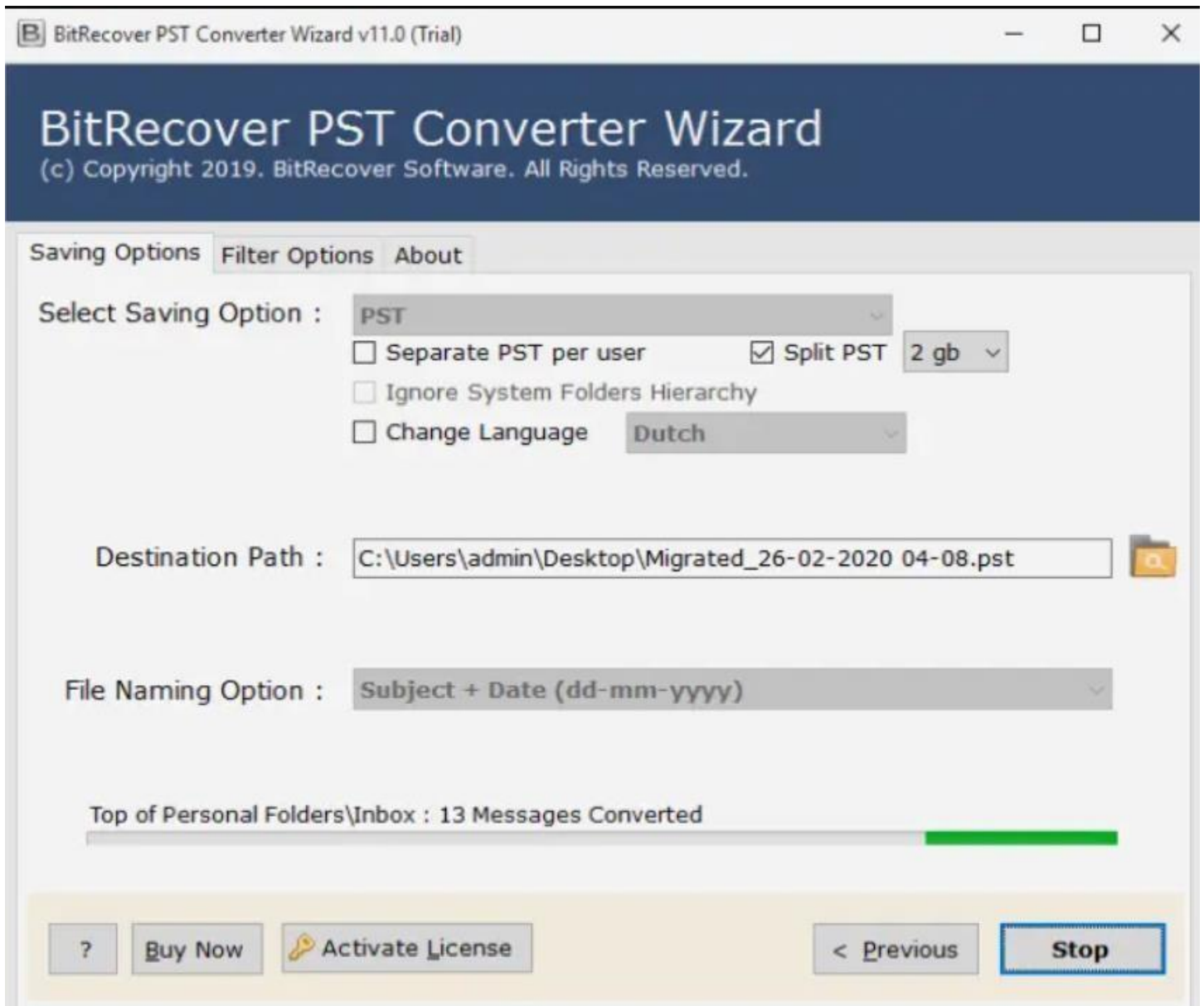
Step 3: The software panel will display the list of all the folders, tick the required ones and click on the **Next** button.



Step 4: Choose a format as the saving option for the imported files from the displayed list of 39+ options. After that, choose a destination path for saving the imported files and click on **Convert** button.



Step 5: Wait for the software to complete the conversion process. You can also see the live conversion progress report in the software panel.



By following the above 5 steps, you can effectively import your PST files into various email clients and services. A notable feature of this software is its advanced filtering options, which allow you to selectively import Emails based on criteria such as date range, subject or sender, providing quite a user-friendly experience. Its intuitive interface ensures that even users with limited technical expertise can navigate the conversion process with ease.

Conclusion

Thus, whether you are transitioning to a new email client, archiving your emails, or performing data analysis, this tool offers a reliable and user-friendly solution. A standout feature of this software is its ability to maintain the original folder hierarchy and metadata properties during the conversion process, ensuring that your data remains organized and intact. Additionally, the tool supports batch conversion, allowing you to process multiple PST files simultaneously, thereby saving time and effort. Additionally, the software's compatibility with both Windows and Mac operating systems makes it a versatile choice for users seeking to manage their PST files across different platforms.