

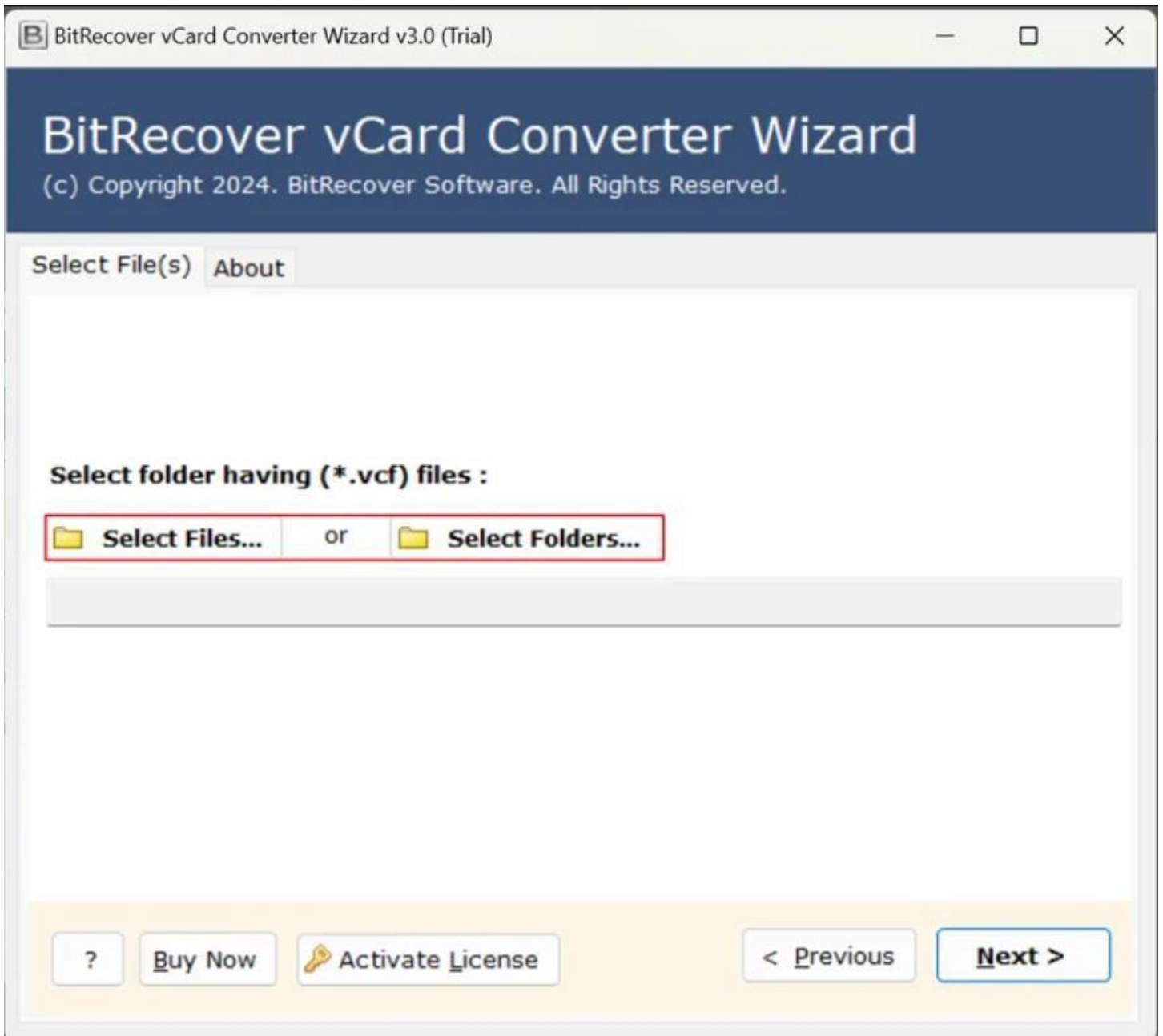
## BitRecover vCard to EML Converter Tool

Convert VCF Files into 13 commonly used file extensions

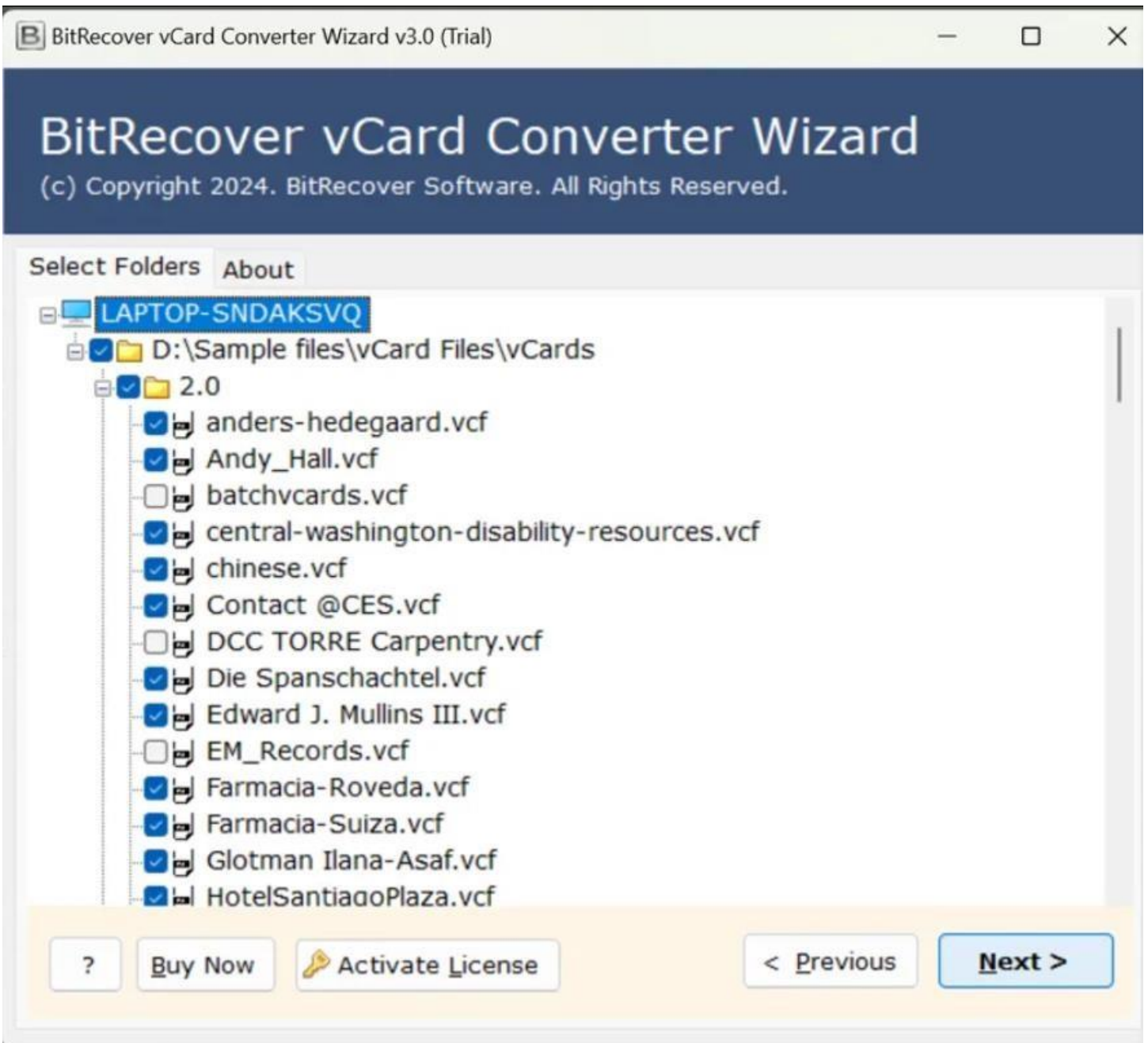
Managing and converting vCard (VCF) to EML files can be challenging, especially when dealing with large volumes of contact data. This is where the vCard to EML Converter Tool comes into play which basically simplifies this process by enabling users to convert vCard to EML files into various formats, including EML and more. This ensures seamless access and management of your contacts across different platforms.

Visit the official page: [BitRecover vCard to EML Converter Wizard](#)

**Step 1: Download** the vCard to EML Converter Tool and open it. If you wish to upload individual files, you can choose the **Select Files** option or if you wish to upload folder, you can choose the **Select Folders** option.



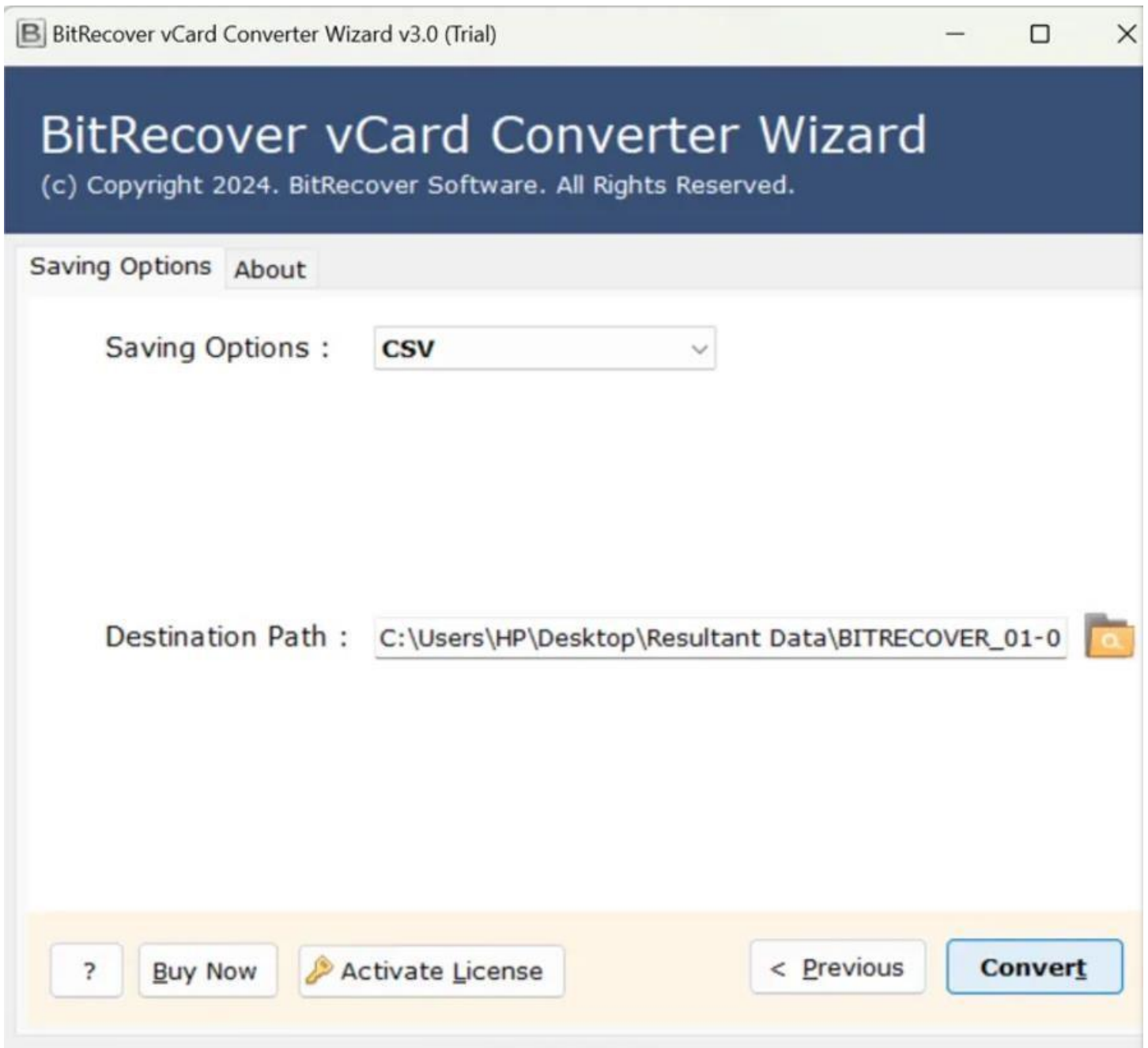
**Step 2:** The software displays the list of all the files/folders in the software panel itself. Tick the required ones and click on **Next** button. You can even preview the contents inside each file/folder.



**Step 3:** Select the saving option file format as per your requirement from the displayed list of options.



**Step 4:** Browse for a destination path where you wish to store the converted files.



By following the above 4 steps, you can efficiently convert your vCard to EML files into the desired format using this vCard to EML Converter Tool. This software's intuitive interface ensures that even users with limited technical expertise can navigate the conversion process with ease. Its compatibility with various formats make it a versatile choice for users seeking to manage their contact information across different platforms.

### Conclusion

Thus, whether you are migrating contacts to a new email client, consolidating contact data, or archiving information, this tool offers a reliable and user-friendly solution. A notable feature of this software is its ability to maintain the original contact fields during the conversion process, ensuring that your data remains organized and intact. Additionally, the tool supports batch conversion, allowing you to process multiple vCard to EML files simultaneously, thereby saving time and effort.