

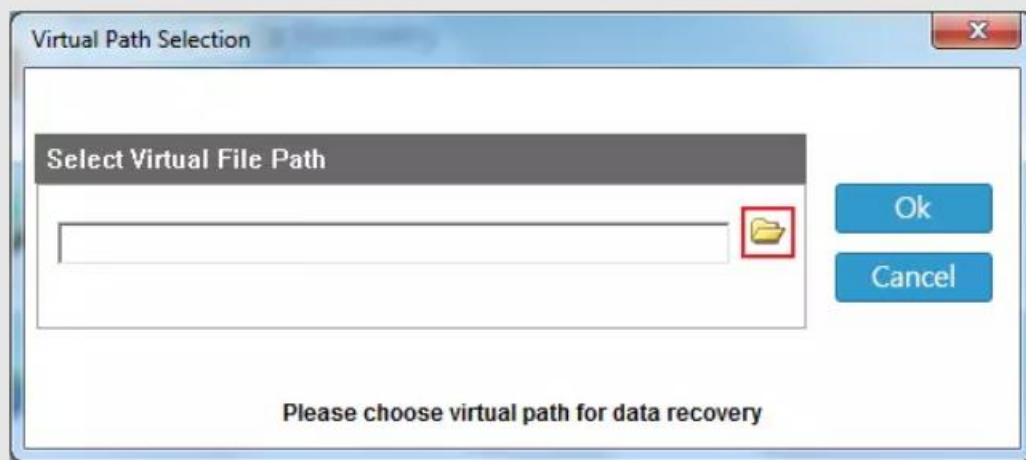
BitRecover VDI Recovery Tool

Granular recovery from corrupt and damaged VDI and VBOX files

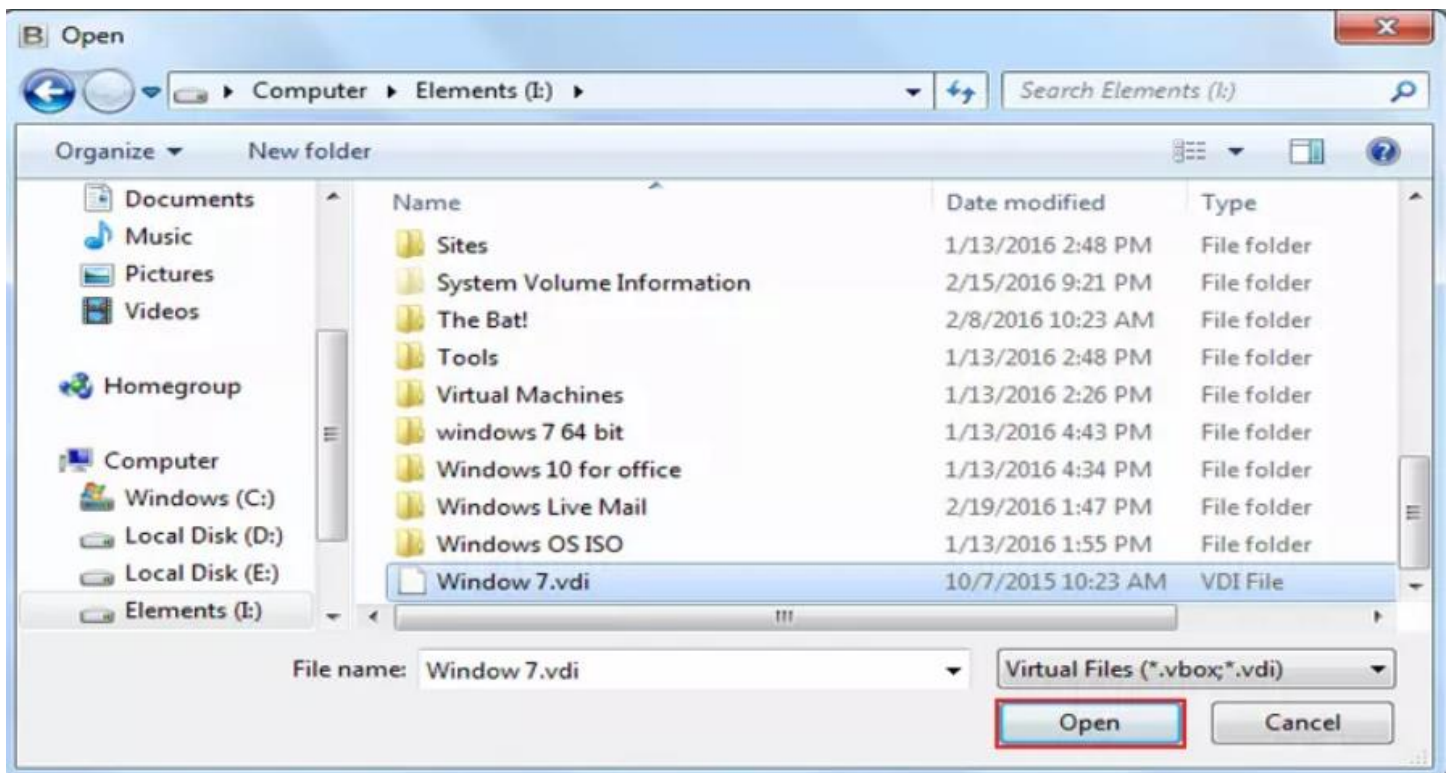
In today's digital landscape, virtual machines are very important to both personal and professional computing environments. However, issues such as corruption, accidental deletion, or system failures can lead to data loss within VDI files and that is where you can use the BitRecover VDI Recovery Tool which is basically a specialized tool designed to recover data from corrupted or damaged VDI files, ensuring that users can retrieve their valuable information without hassle.

Visit the official page: [BitRecover VDI Recovery Tool](#)

Step 1: Download the BitRecover VDI Recovery Tool and after opening it, click on the folder icon to choose virtual path for data recovery.



Step 2: Browse through your computer and after selecting a file, click on **Open** button.

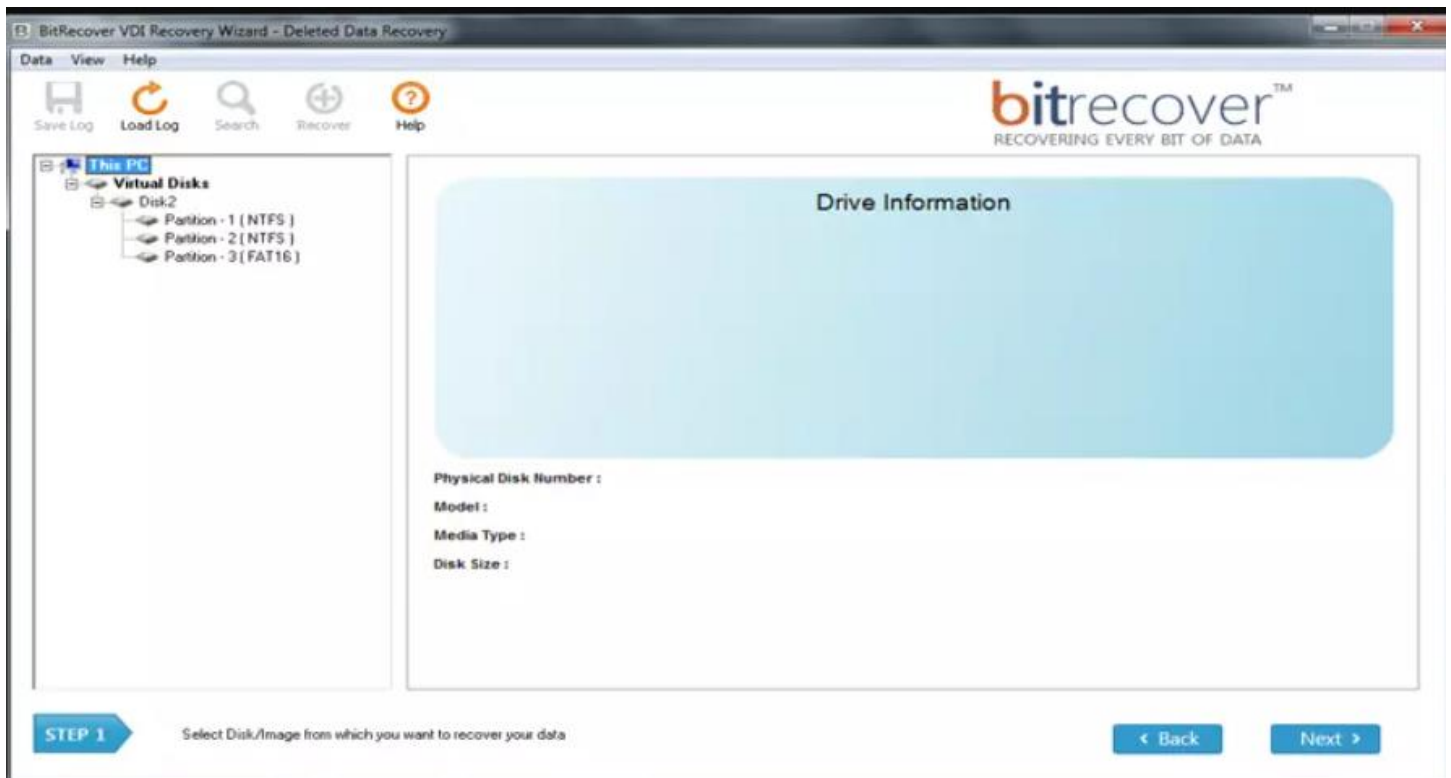


Step 3: Now, select a recovery option from the displayed 4 modes as per your requirements.

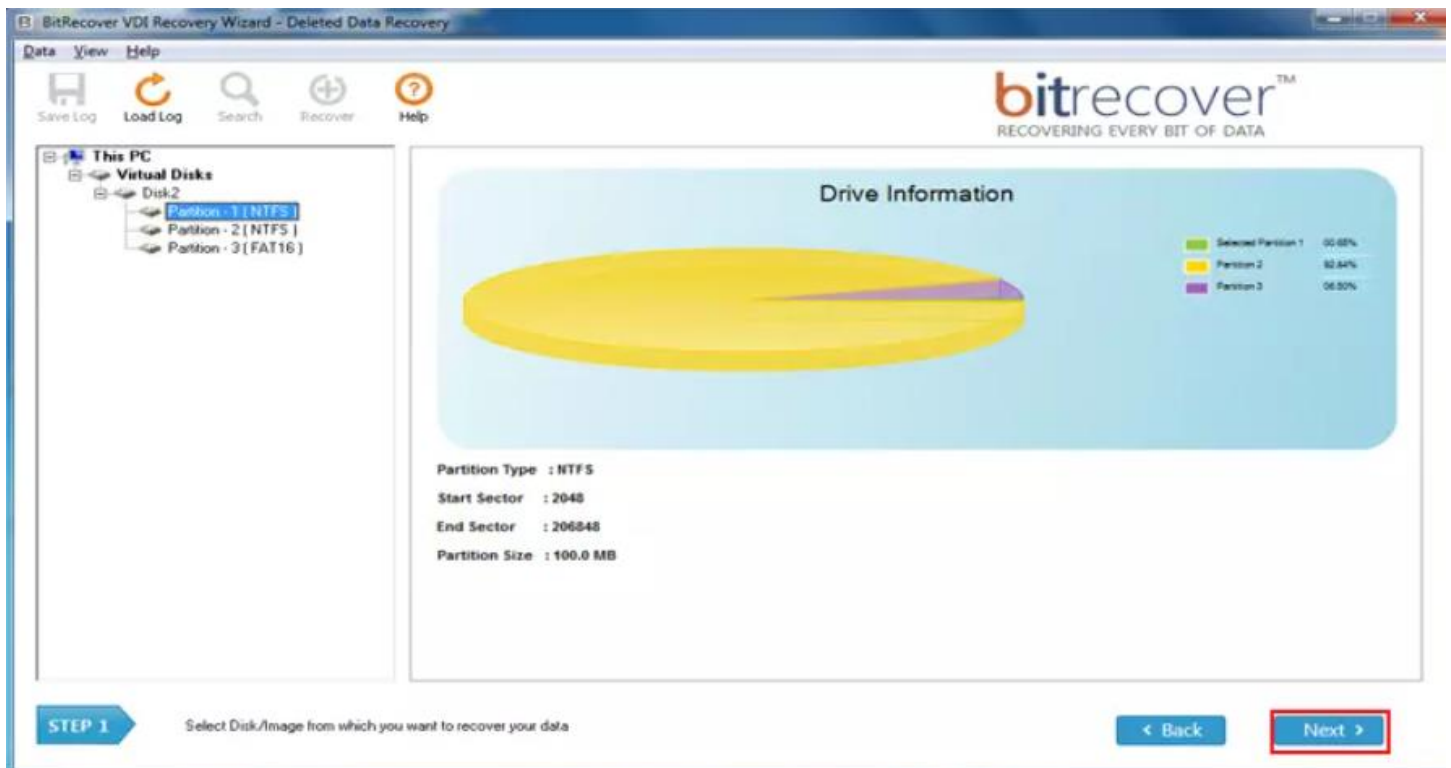


Please Select Recovery Option

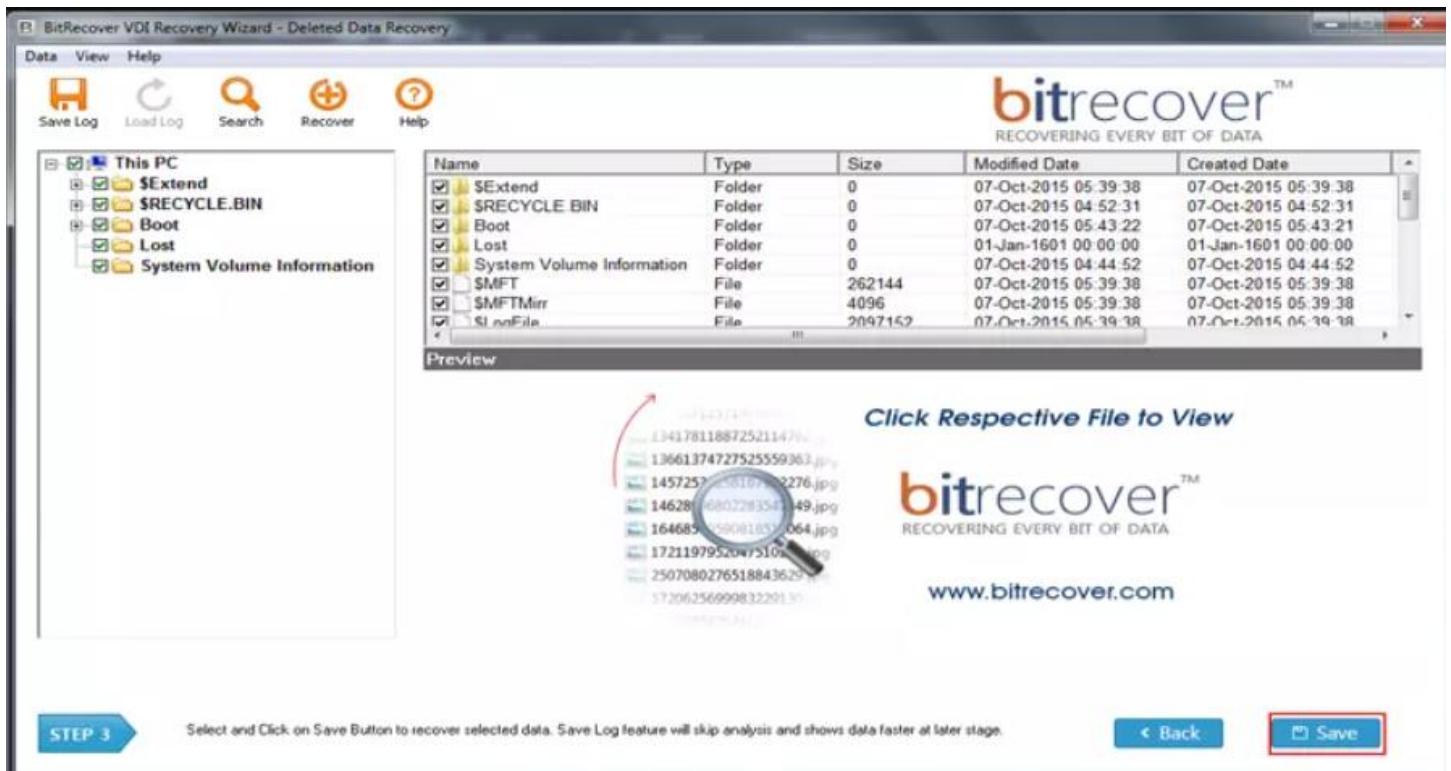
Step 4: The software panel displays the disk partitions from which you can select one to display the drive information.



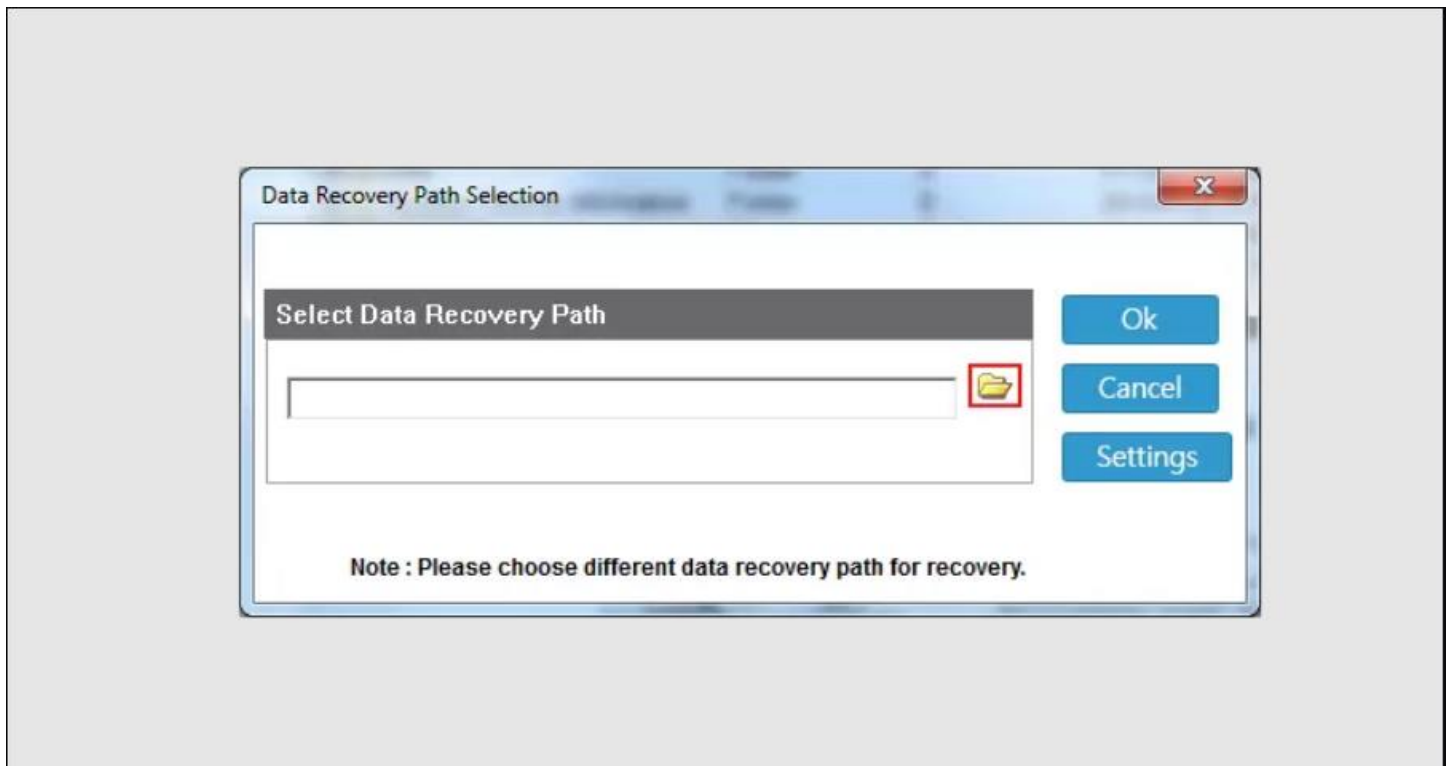
Step 5: After selecting the drive partition, simply click on the **Next** button.



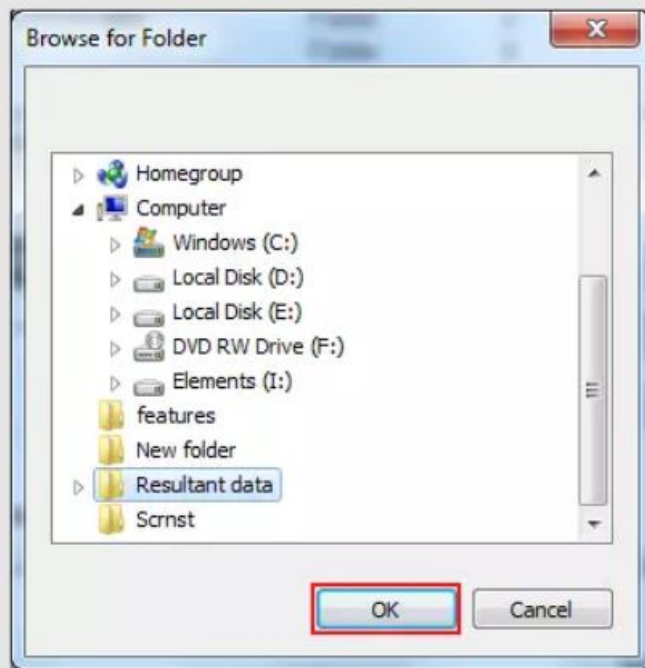
Step 6: Select the files/folders which you wish to recover and save. The software panel also provides a preview of the contents inside the select files/folders.



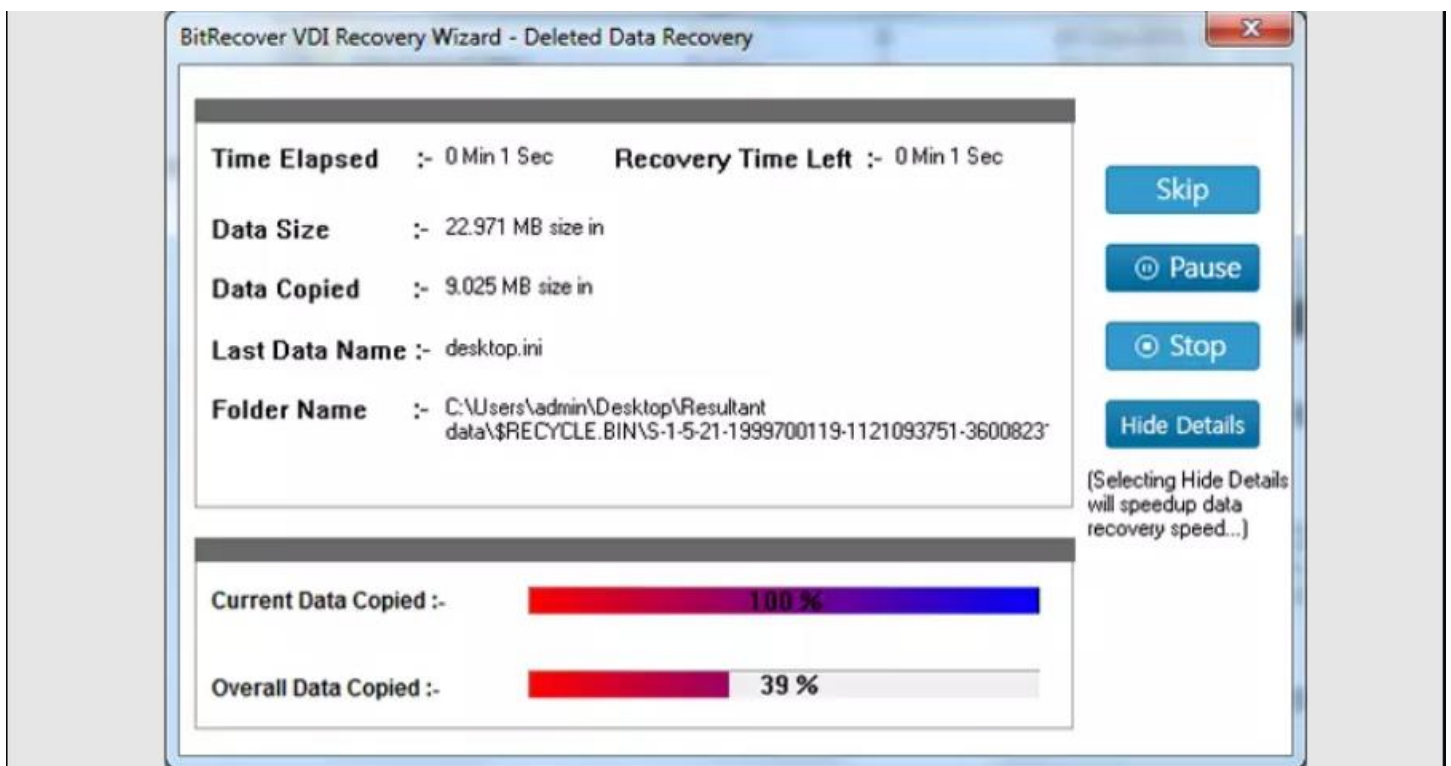
Step 7: Choose a data recovery path by clicking on the folder icon.



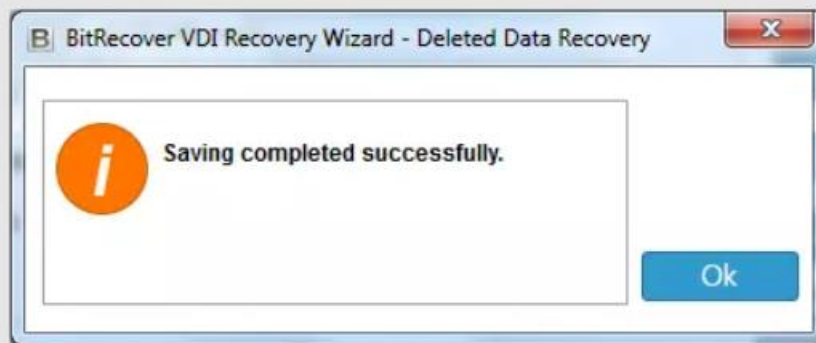
Step 8: Browse through your computer and after selecting a destination path, click on **OK** button.



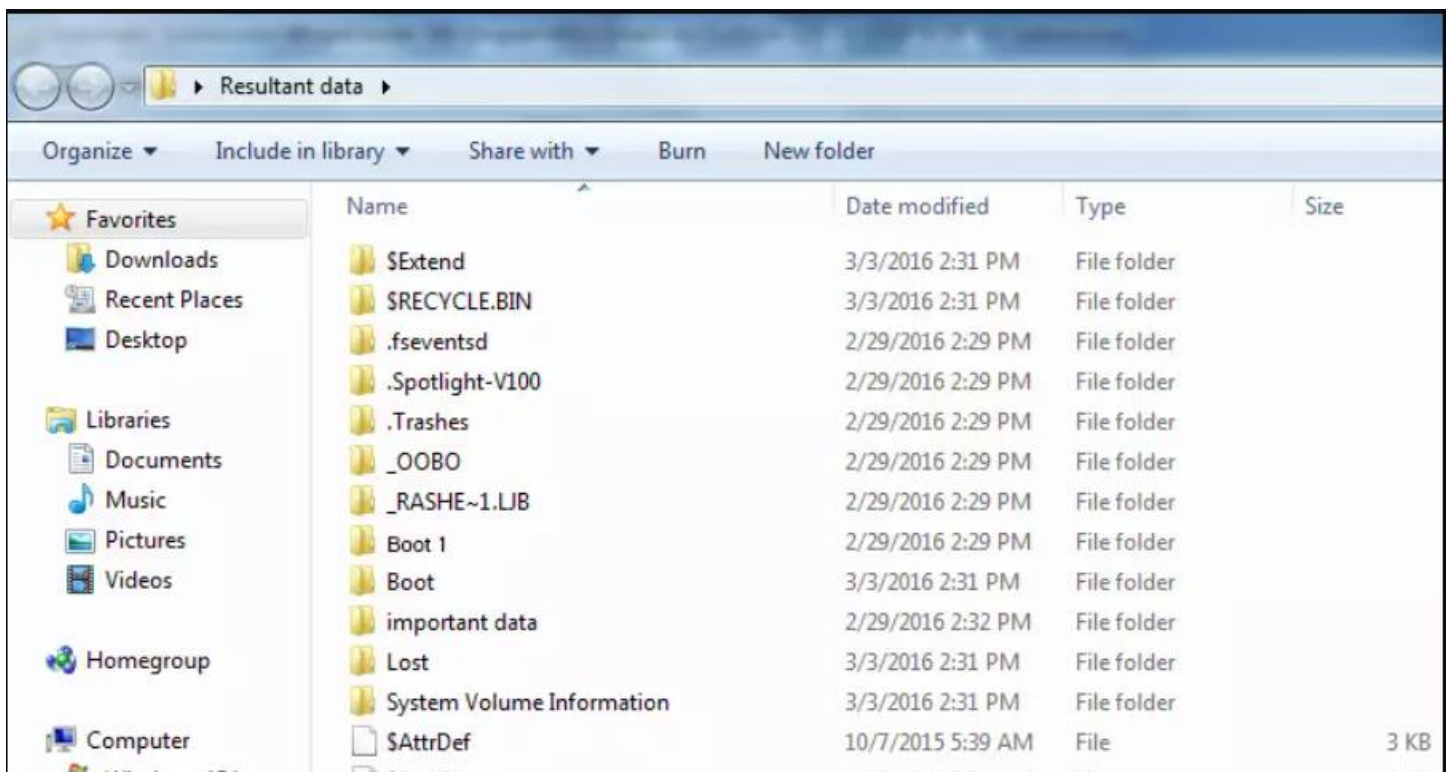
Step 9: Wait for few moments and let the software complete the backup process. You can also see the recovery time left in the software panel.



Step 10: After the backup process is completed, you will get a prompt message depicting that saving has been completed successfully.



Step 11: Go to the destination path to preview the resultant data.



By following the above 11 steps, you can effectively recover your lost or corrupted data from VDI files using BitRecover VDI Recovery Tool. A notable feature of this software is its ability to handle various VDI file types and its support for multiple file systems, ensuring compatibility with a wide range of virtual machines. Its advanced recovery modes offer comprehensive solutions for different data loss situations.

Conclusion

Thus, whether you have lost data due to system crashes, accidental deletions or corruption of files, this tool offers a reliable and user-friendly solution making the recovery process straightforward and accessible to all users. A standout feature of this software is its compatibility with various VDI file types and its support for multiple file systems including FAT, NTFS, HFS+ and EXT.