

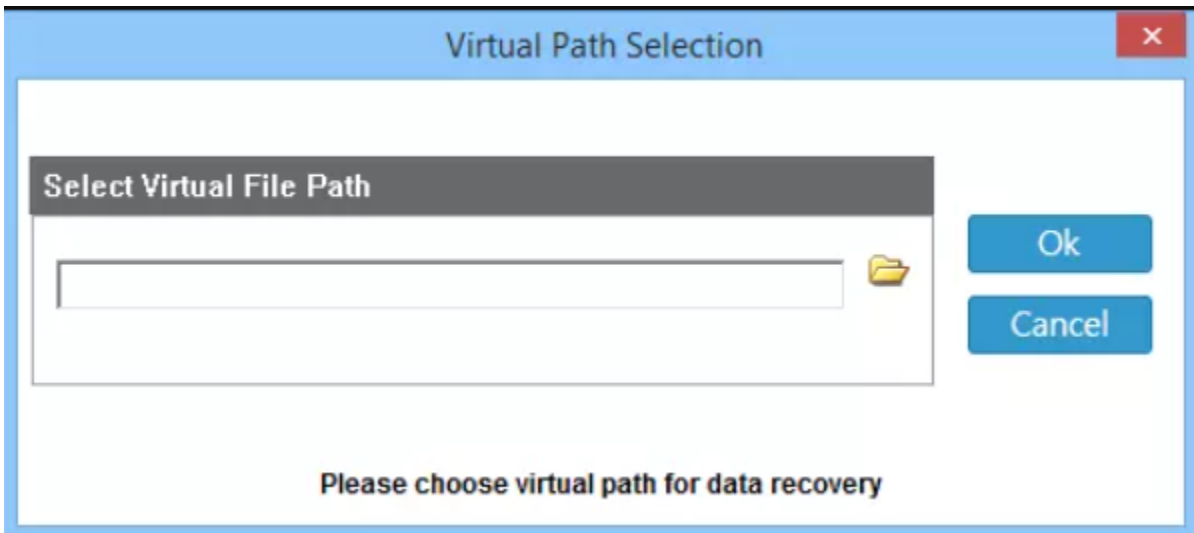
BitRecover VMFS Recovery Tool

Best software to Recover Data from VMFS .vmdk Drives

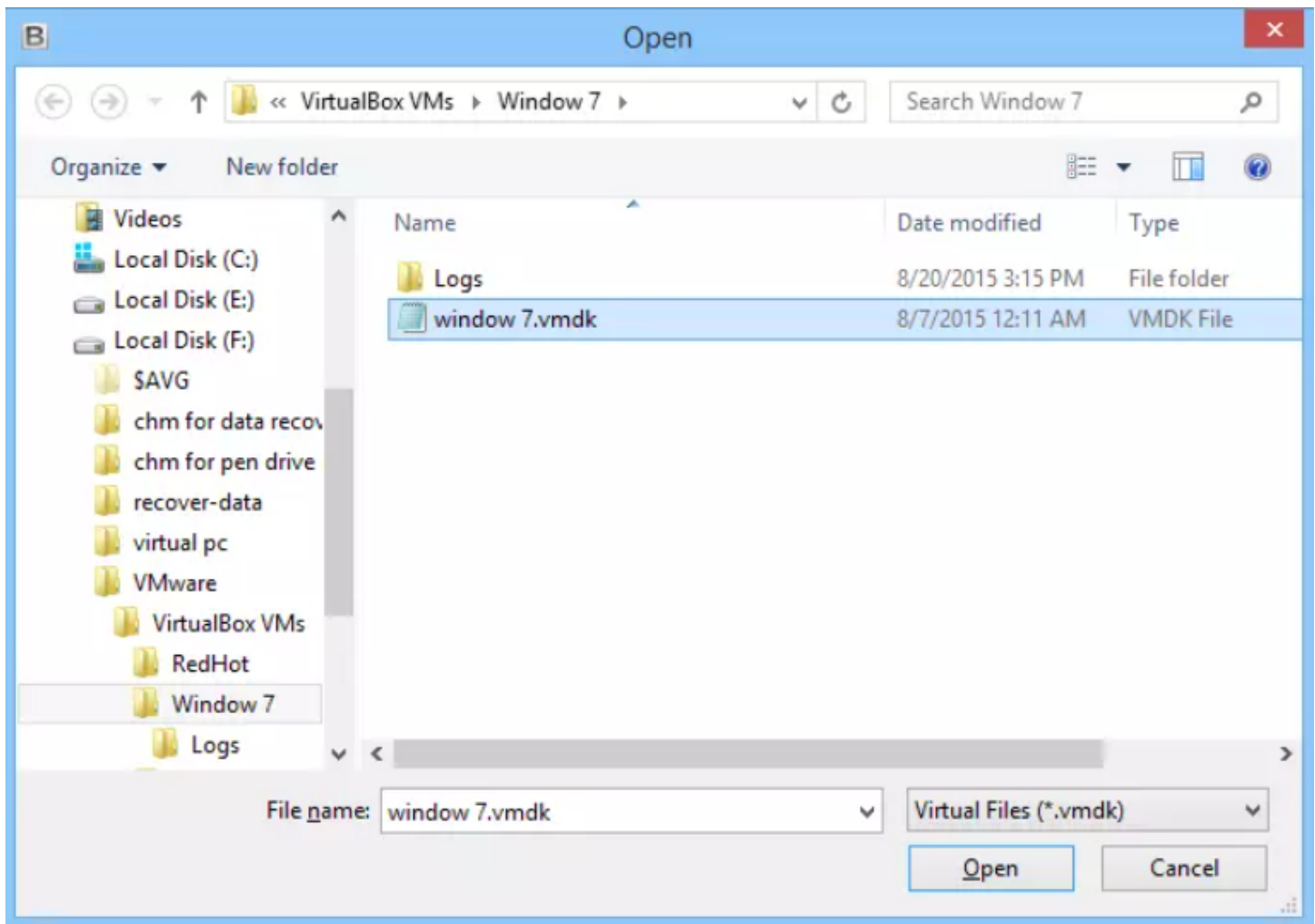
Managing VMware environments can become challenging when VMFS (Virtual Machine File System) partitions become corrupted, deleted or inaccessible, leading to potential data loss and operational disruptions. This is where the VMFS Recovery Tool comes into play which basically offers a reliable solution to recover data from VMFS partitions associated with VMware ESXi, ESX and vSphere servers. This tool ensures the restoration of critical data, maintaining the integrity and continuity of virtualized environments.

Visit the official page: [BitRecover VMFS Recovery Wizard](#)

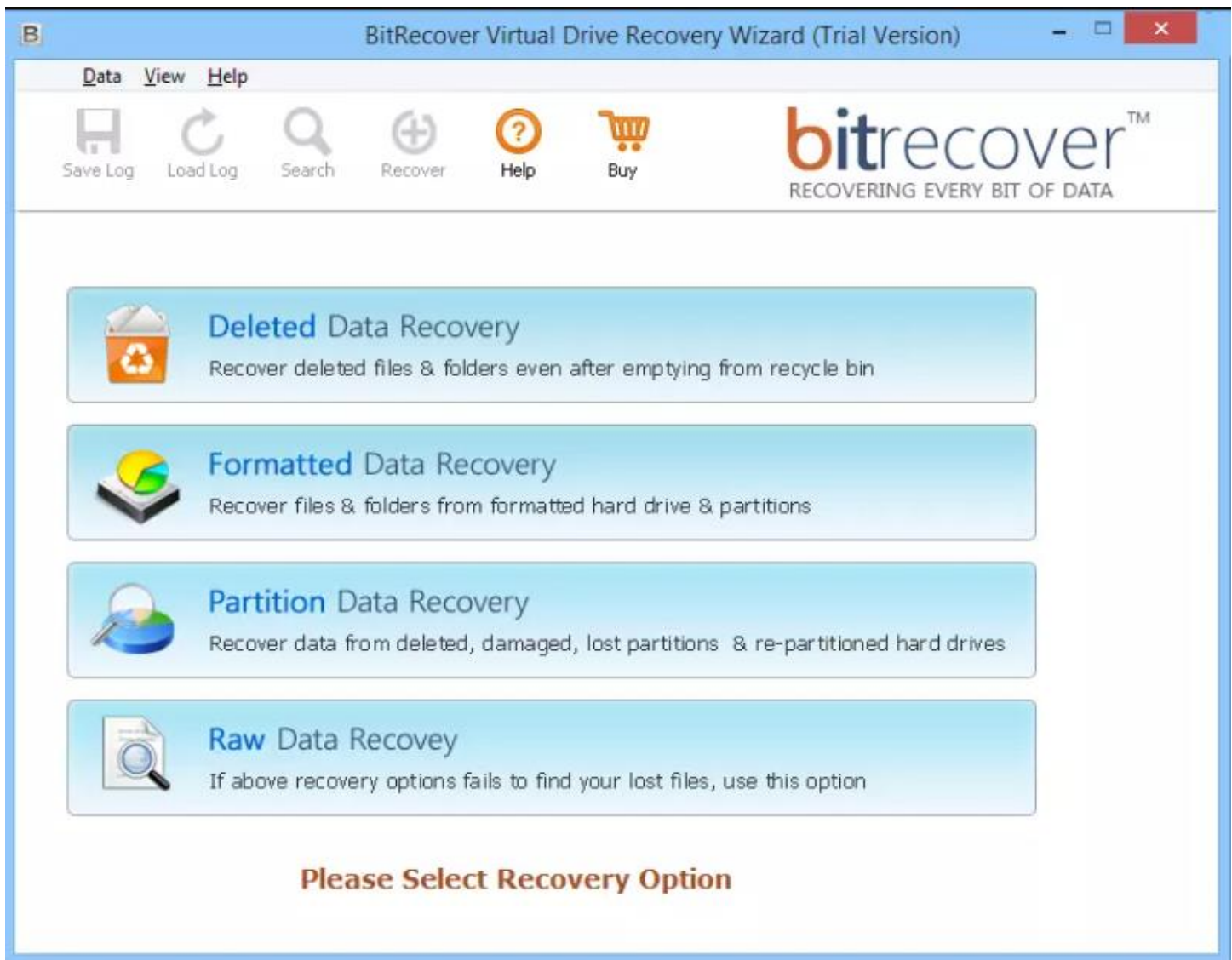
Step 1: Download the VMFS Recovery Tool and open it. Click on the **Folder** icon to upload VMFS drive.



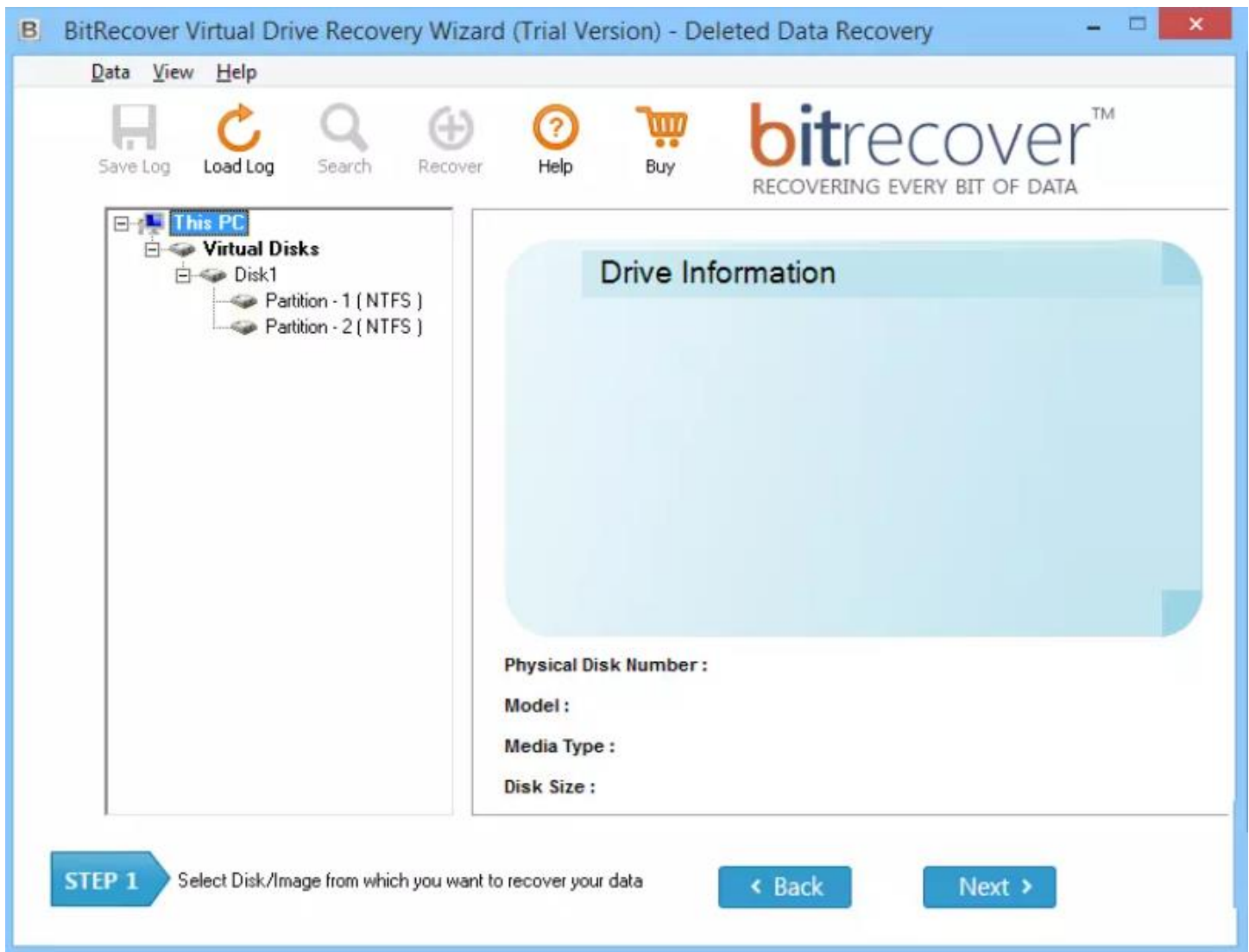
Step 2: Choose the VMDK file which you require and click on **Open** button.



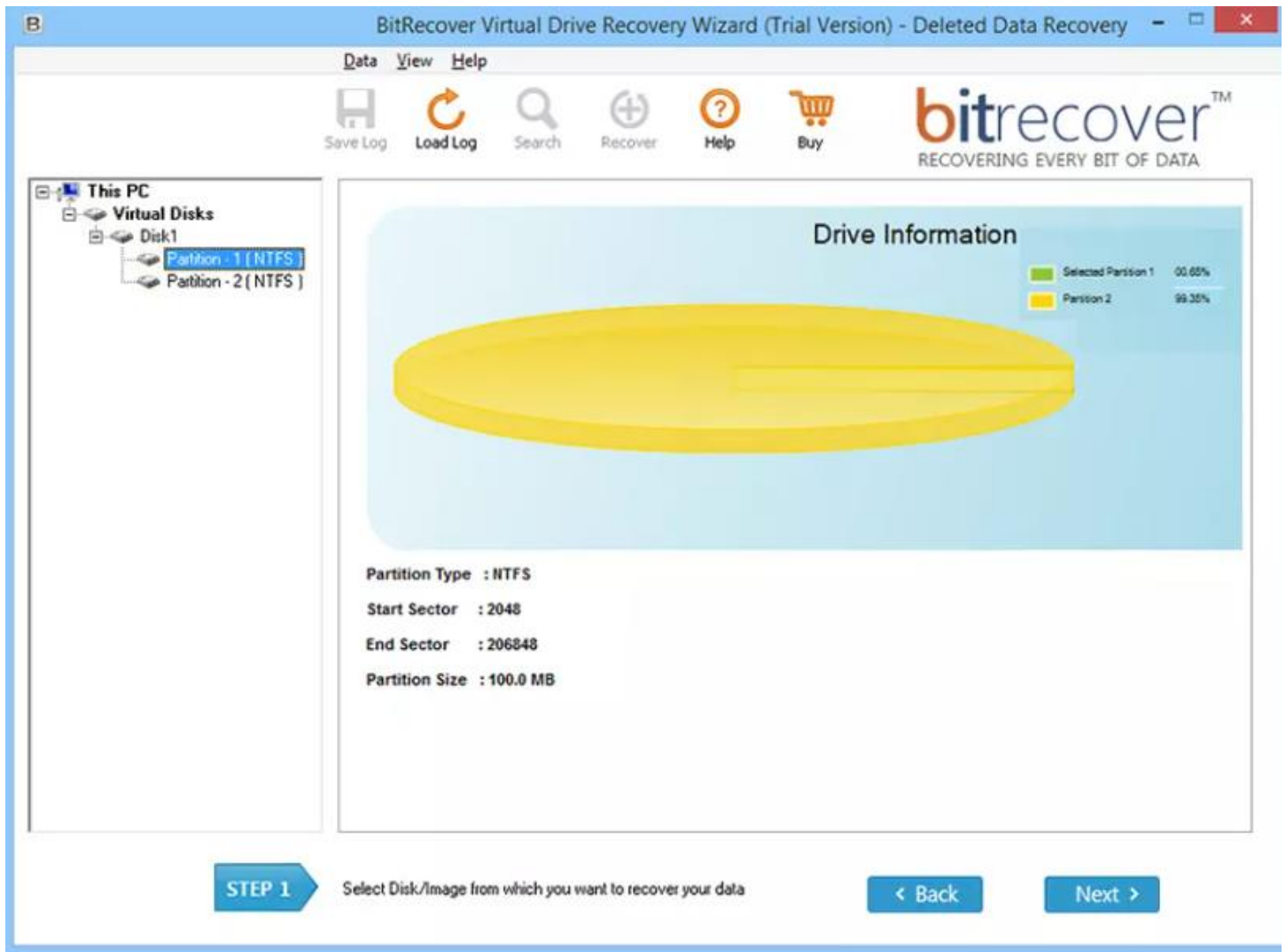
Step 3: The software provides you 4 different recovery options which can choose from as per your requirement.



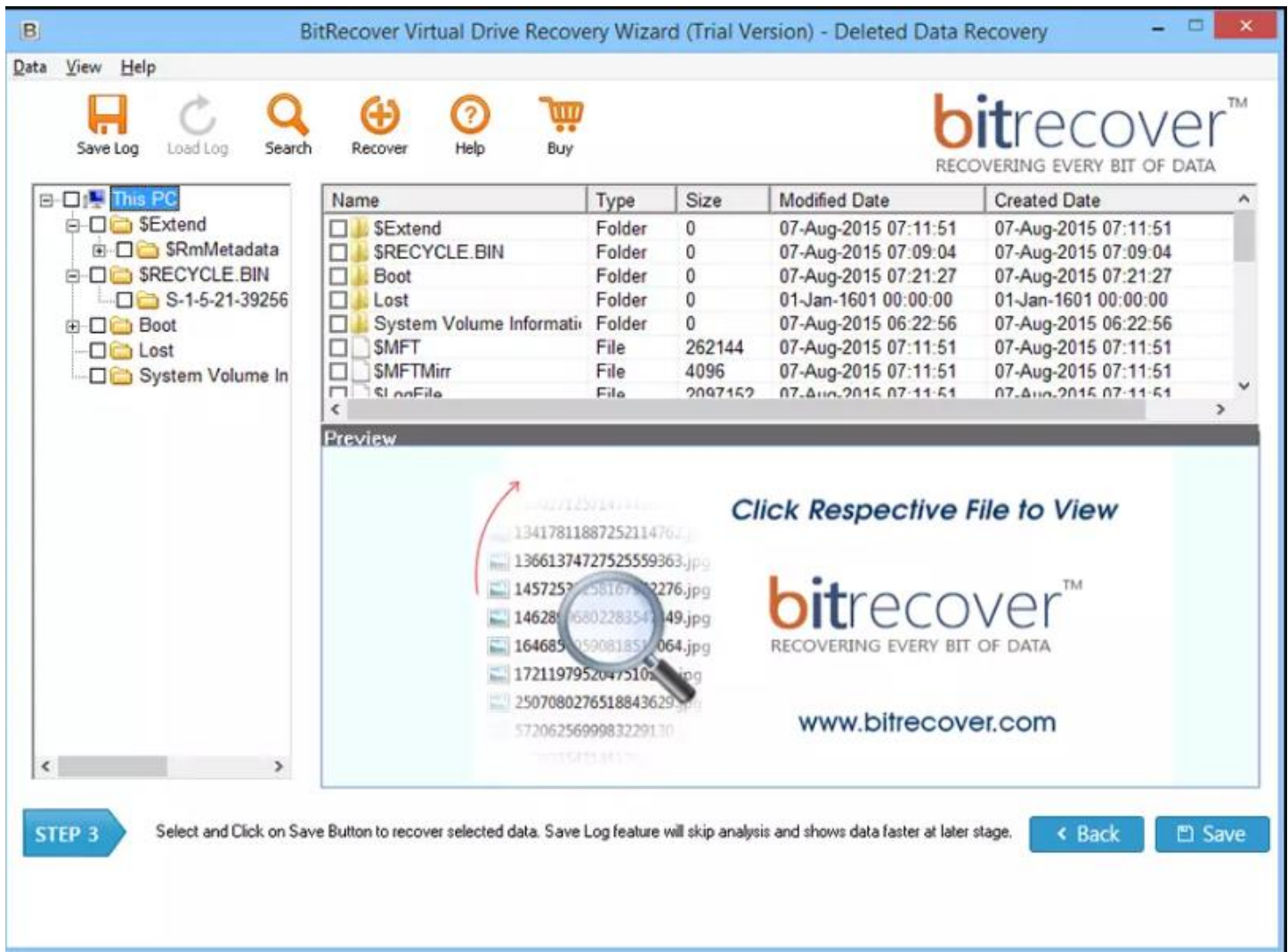
Step 4: The software displays all the partitions in the software panel itself.



Step 5: Select one partition to see all the drive information such as **Partition Type**, **Start Sector**, **End Sector** and so on.



Step 6: The software provides you display of all the contents present inside the drive. Tick the required files/folders and then click on the **Save** button to recover the files.



By following the above 6 steps, users can retrieve VMDK (Virtual Machine Disk) files and other essential data. The software also offers multiple recovery modes such as Deleted Data Recovery, Formatted Data Recovery, and Partition Data Recovery, to address different data loss situations effectively. Its advanced search functionality allows users to locate specific files based on criteria like file name, extension, size and date range, facilitating efficient data retrieval.

Conclusion

Thus, this VMFS Recovery Tool provides a comprehensive and user-friendly solution for recovering data from VMFS partitions in VMware environments. Its robust features, including support for various recovery modes and advanced search options, ensure that users can effectively restore lost or corrupted data. By maintaining data integrity and offering a streamlined recovery process, this tool is ideal for both individual users and organizations seeking to safeguard their virtualized infrastructure.