

BITSCAPE



 eConnect

A seamless employee experience in
MS Teams

www.bitscape.com

With swift transformation in the work patterns, businesses are adapting remote and **hybrid work environments**. To keep this transformation fluid, organizations are exploring **innovative forms of collaboration** for their employees. They are open to redesign their **employee experience** and related technologies. But it is quite common that our technologies are fragmented and sometimes hard to find, which results in disruption in the workflows.

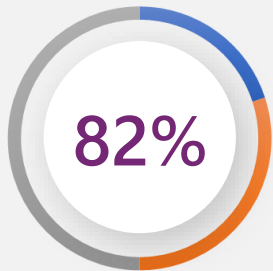


How we suspended the knot through innovative collaboration/Solution

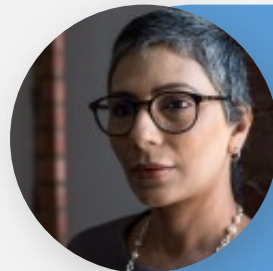
When as a Company, we realized the need of better **business intelligence** engine to improve productivity for decentralized workforce, we spear-headed an initiative that saw the implementation of **business applications** coupled with **Microsoft Teams**. Our solution addresses this uniquely by offering seamless **employee experience** even if you have fragmented applications and technologies.

Adept Conviction!!

Businesses must fundamentally redesign employee support & service delivery experience. Lets see what the experts have to say...

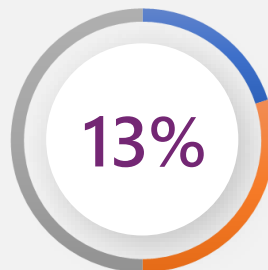


82% of Company Leaders Plan to Allow Employees to Work through unified platform some of the productive time.



69% of Routine Work Currently Done by Managers will Be Fully Automated by 2024

70% Percent of Organizations will Integrate AI to Assist Employees' Productivity by 2021



13% of Employees Are Largely Satisfied With Their Work Experiences

Mr. Sukant Ratnakar (Corporate motivational speaker)

“ Our future success is directly proportional to our ability to understand, adapt, and integrate new technology into our work. ”

*As per Gartner - <https://www.gartner.com>

eConnect rides the wave of employee connectivity



COVID-19 has shifted the vision of businesses from onboarding to online presence

The pandemic era is one of the difficult times for businesses. The unexpected & quick switch to a fully remote working model in the rouse of Covid-19 has been proved the hard situation, even for those who support their employees sometimes working from home in special cases. Technology departments have had to give surety of each employee having a secure & connected device they can work remotely with access to all tools and applications they need for connections.

Active performers of the enterprise had to access multiple apps, tools & sites

To gather the data, files & knowledge, professionals need to access multiple platforms, and to do so they have to enter & exit various pages, or they have to navigate to various windows. To overcome the situation & to avail all platforms in one place, eCONNECT has been developed - One app with Multiple features.

WHY SHOULD YOU ADOPT A VIRTUAL CONNECTIVITY PLATFORM?

1

Spend more time on what makes you competitive. Less time on the routine administrative tasks

2

Add a competent and loyal technology by your side

3

Become more productive & multitasking

4

Have assistance you need to reach your business goals

Development Insights



The vision and roadmap of eConnect is to **coexist** with **Microsoft Viva** and create hooks to generate Microsoft Viva add-on demand to complete full employee experience in **Microsoft Teams** as a centralized organizational tool.



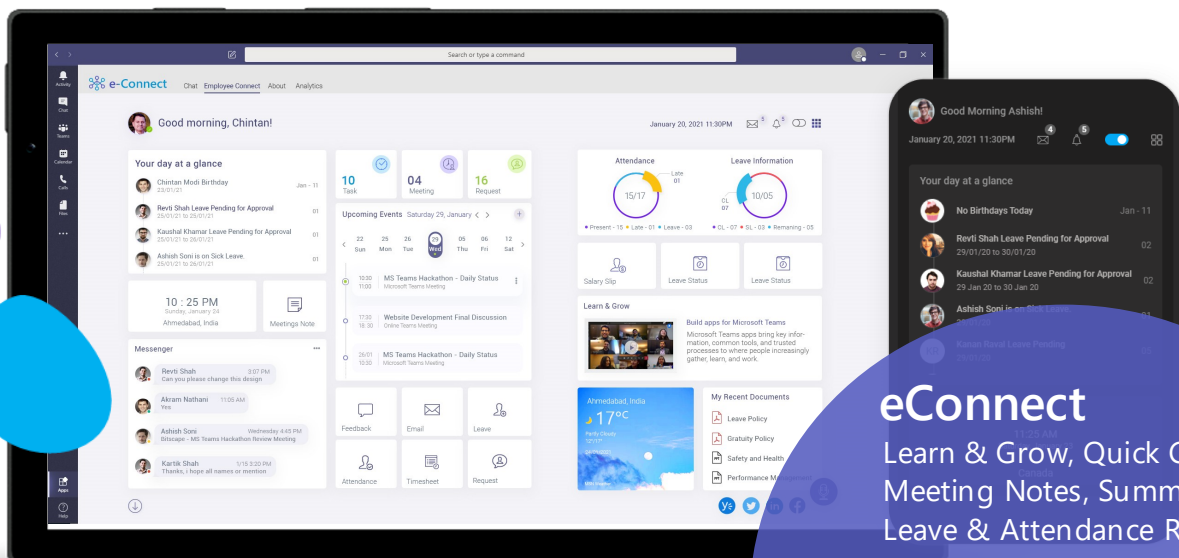
Microsoft Viva

eConnect

Bitscape brings the solution home

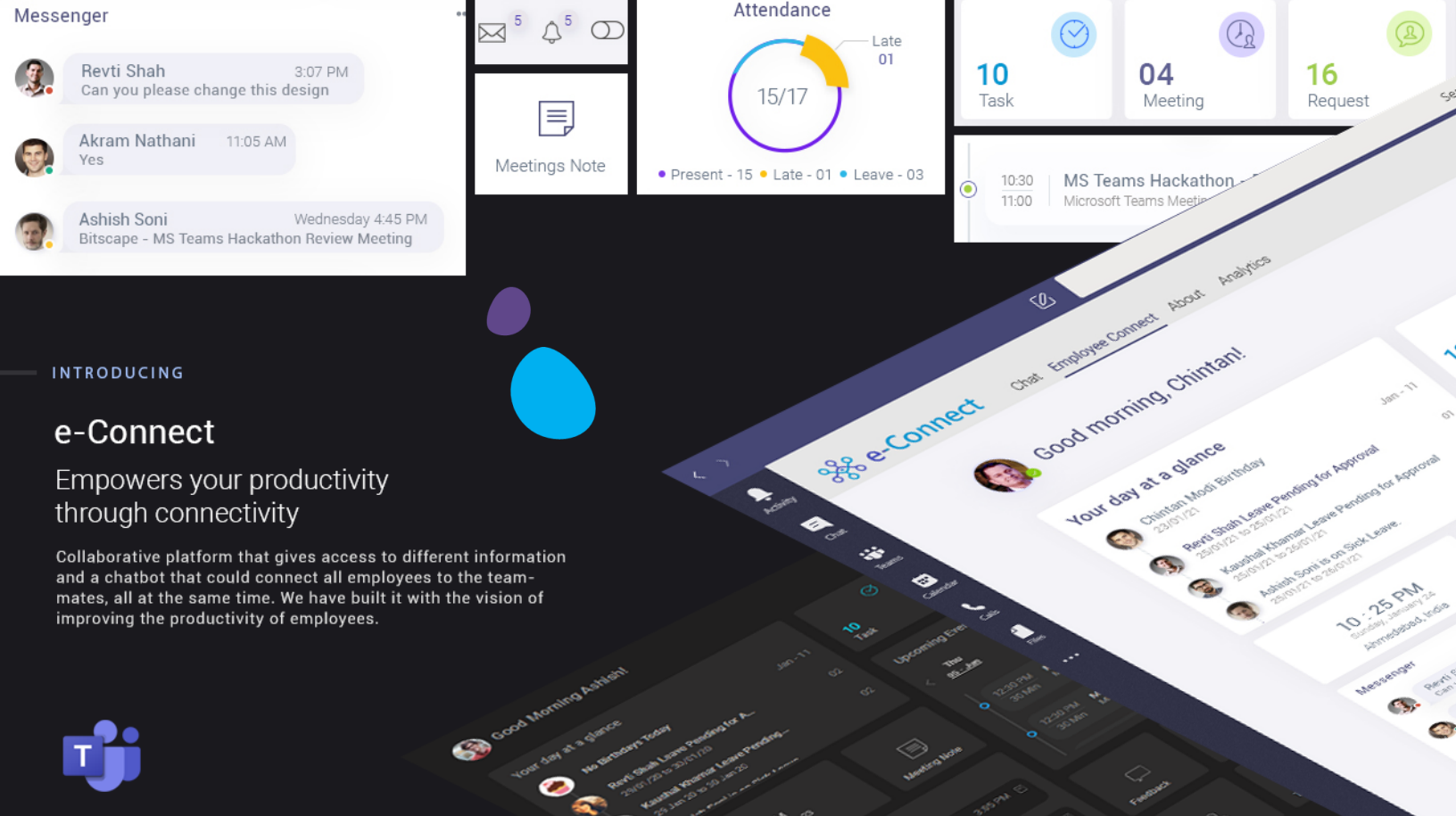
Bitscape introduces eConnect, a collaborative platform built with the vision of improved connectivity between employees and the imperative technologies. eConnect brings together business applications and internal systems into an integrated environment to empower work productivity of employees.

This application operates as a self-service Microsoft Teams experience that leverages multiple functionalities of communications, resources, knowledge, and insights using conversational AI, MS Teams framework, bot framework and so on.



eConnect

Learn & Grow, Quick Chats,
Meeting Notes, Summary of
Leave & Attendance Records,
Upcoming Events, & Much
More.



INTRODUCING

e-Connect

Empowers your productivity through connectivity

Collaborative platform that gives access to different information and a chatbot that could connect all employees to the team-mates, all at the same time. We have built it with the vision of improving the productivity of employees.



eConnect Features

AI Built Chatbot

Daily Summary

HR Info

Learn & Grow

Meeting Capture

Time zone Converter

My Recent Documents

Important Mails

Timesheet

Upcoming Events



eConnect's 2.0 Plans of Action

BITSCAPE's experienced engineers are exploring the technology to enhance app features and integrate more functionalities like,

1

A control dashboard for management with Power BI reports evaluating employee insights. By monitoring employee activities it'll generate an analytical display for Managers, Team Leads, and Executive teams.

2

Bringing all other organizational used, HR application experience into centralized Teams platform with eConnect.

3

Activity Timeline display on dashboard for employees.

4

Leader Board & Personal rating system to track performance.

5

Employee Rewards and Co-worker Appreciations.

6

Integrate Contact-less Attendance system.

